



REPORT TO COUNCIL

To: **Mayor and Councillors**

Subject: Innes Corners Christmas Display Improvements

File #: 5757.00

Doc #:

From: Rick Bomhof, P.Eng.
Director of Engineering, Parks & Environment

Date: July 3, 2019

RECOMMENDATION:

THAT \$21,000 be allocated from the Enterprise Fund to provide a new Christmas Light Display at Innes Corners Plaza

PURPOSE:

The purpose of the report is ask for approval to spend \$21,000 from the Enterprise Fund for an enhanced Christmas light display at Innes Corners Plaza.

POLICY:

N/A

COMMENTS/ANALYSIS:

One of the items arising from the annual Council/staff Blue Sky vision setting session was to improve the Christmas light display at Innes Corners Plaza. The rational behind this suggestion is that it will create an inviting space for the community to visit, provide a great photo opportunity for residents and visitors, is a good location to try new types of light displays and it would be an attraction for more positive activities which in turn would deter less desirable activities in the plaza.

Below are the types of lights and displays that would be added.

Double Bow Wreaths on six poles



White Lights on four interior trees



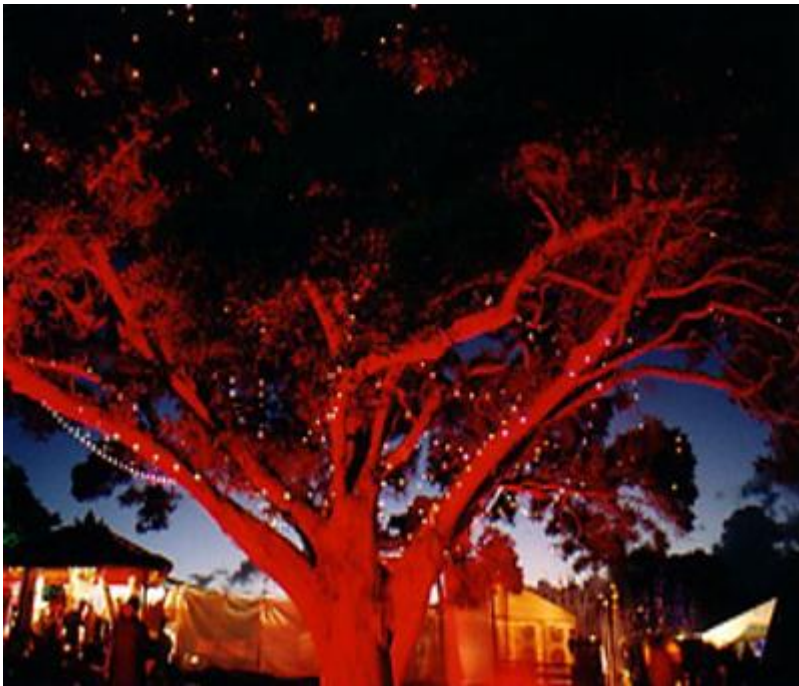
Illuminated Snowflakes on Fountain Edge (Two @ 2m high)



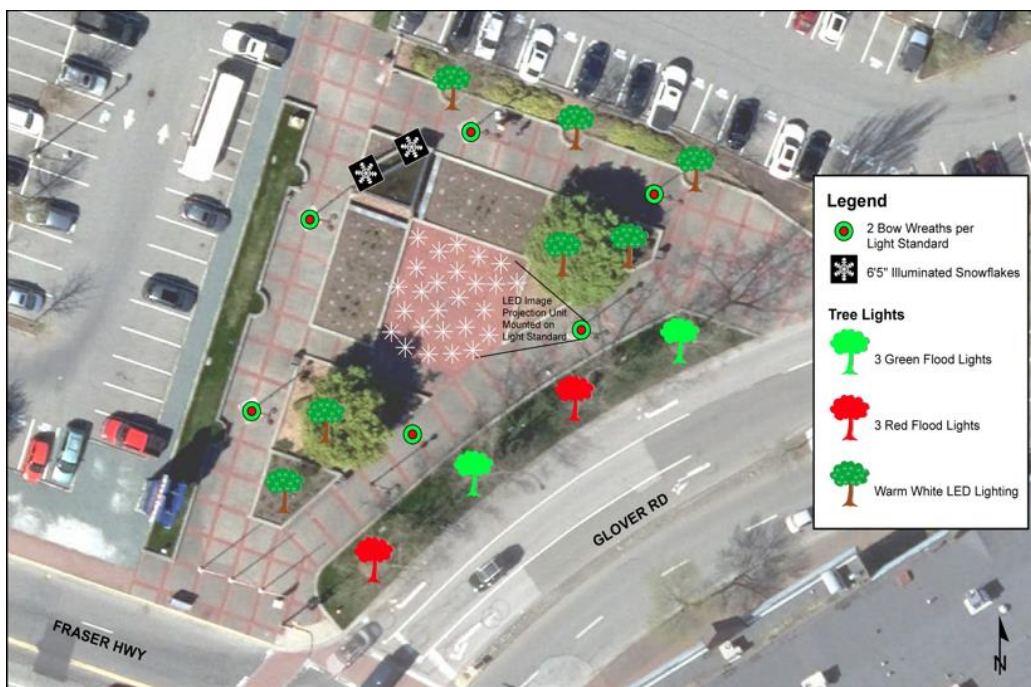
Revolving Illuminated Snowflakes on Plaza Floor



Red & Green Floodlighting in the large Oak Trees along Glover Rd



Below is a aerial plan indicating the location of the new displays



As Innes Corners Plaza is located very near to the Gateway Casino front entrance the Casino has offered to contribute \$15,000 towards the new Christmas light display and to have it's security staff oversee security of the display during the overnight hours.

BUDGET IMPLICATIONS:

The following is a summary of the estimated costs:

Christmas Lights and display	\$33,000
Installation and new electrical connections	\$ 2,000
Contingency	\$ 1,000
Security (five weeks at 8 hrs/night)	\$ 8,000
Subtotal	\$44,000

Less contribution from Gateway Casino \$23,000
(Includes \$15,000 cash contribution and In-kind security¹)

Net Cost to City \$21,000

Sufficient funds are available in the Enterprise Fund to cover this cost

Respectfully Submitted,



Rick Bomhof, P.Eng.
Director of Engineering, Parks & Environment

¹ In-kind security from Gateway Casino will be periodic monitoring of the site throughout the night.

CHIEF ADMINISTRATIVE OFFICER'S COMMENTS:

I support the recommendation.



Francis Cheung, P. Eng.
Chief Administrative Officer