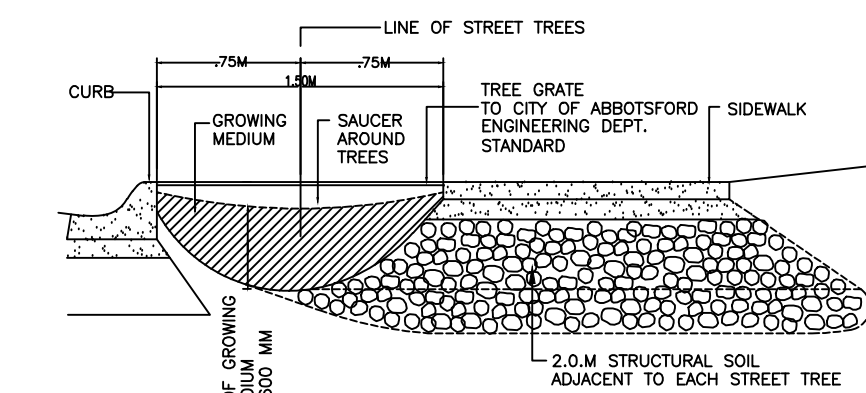


LOGAN AVENUE

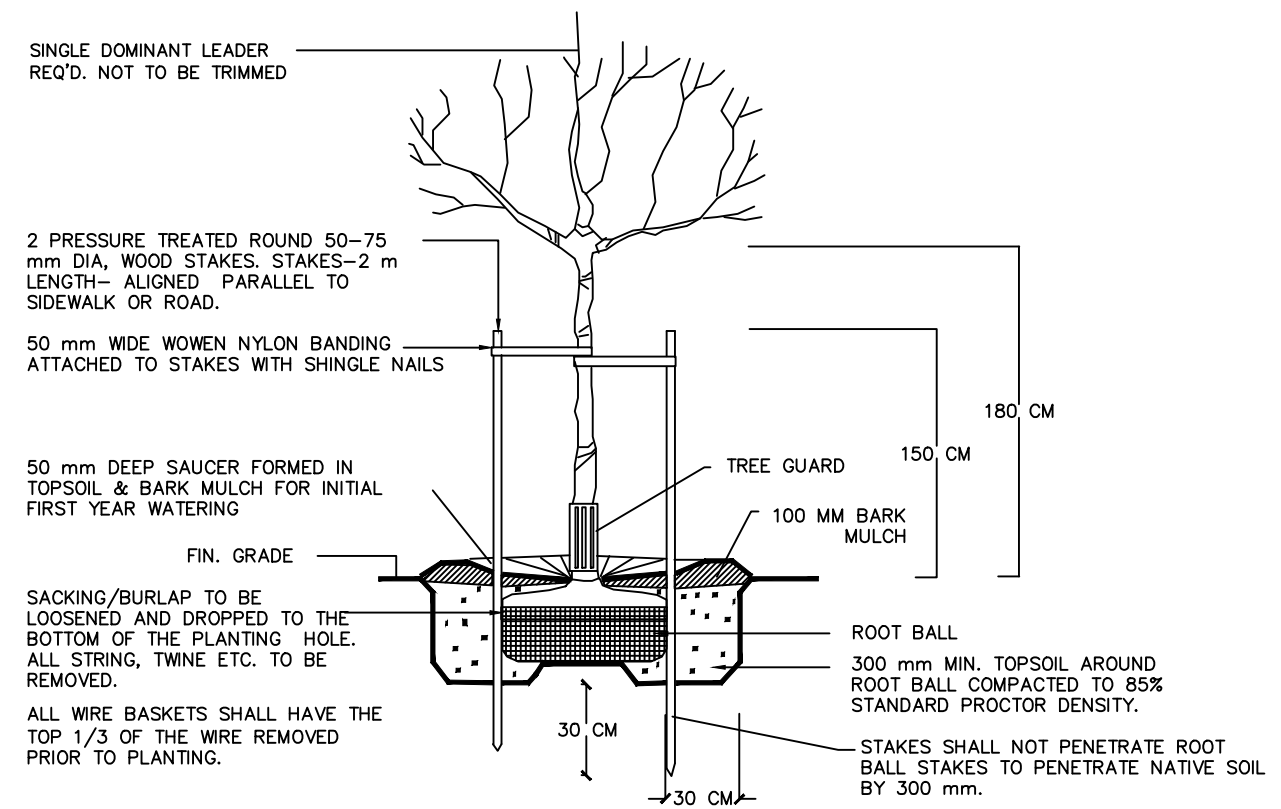


STREET TREE PLANTING DETAIL

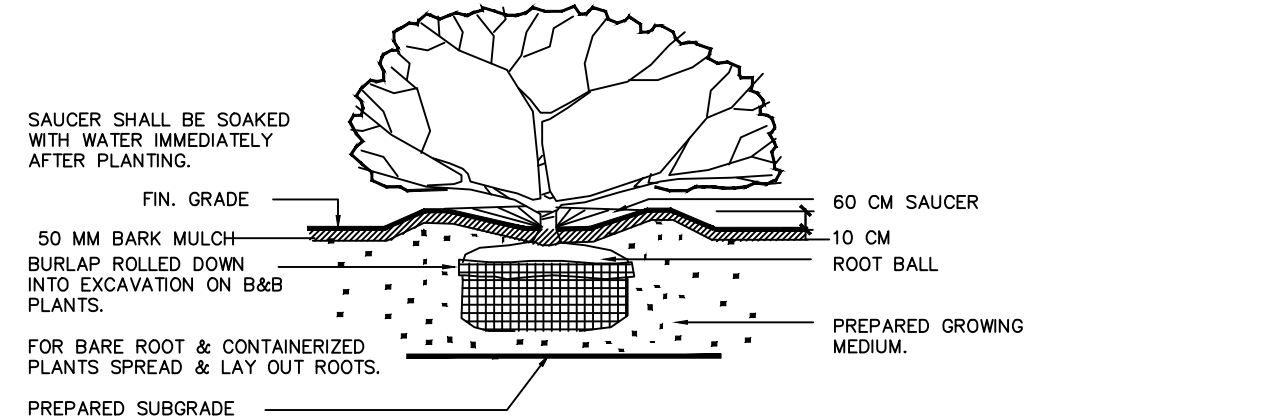
NOTES / GENERAL

- PLANT SIZES IN THIS LIST ARE SPECIFIED ACCORDING TO BC LANDSCAPE STANDARD "LATEST EDITION". CONTAINER SIZES ARE SPECIFIED AS PER "ONTA STANDARDS" BOTH PLANT SIZE AND CONTAINER SIZE ARE THE MINIMUM ACCEPTABLE SIZES. SEARCH AND REVIEW MAKE PLANT MATERIAL AVAILABLE FOR OPTIONAL REVIEW BY "LANDSCAPE ARCHITECT" AT SOURCE OF SUPPLY. AREA OF SEARCH TO INCLUDE LOWER MAINLAND AND FRASER VALLEY. "SUBSTITUTIONS" MUST OBTAIN WRITTEN APPROVAL FROM THE "LANDSCAPE ARCHITECT" PRIOR TO MAKING ANY SUBSTITUTIONS TO SPECIFIED MATERIAL. UNAPPROVED SUBSTITUTIONS WILL BE REJECTED. ALLOW A MINIMUM OF FIVE WORKING DAYS PRIOR TO DELIVERY FOR REQUEST TO SUBSTITUTE. SUBSTITUTIONS ARE SUBJECT TO "B.C. LANDSCAPE STANDARD"
- ALL PLANT MATERIAL MUST BE PROVIDED FROM CERTIFIED "DISEASE FREE" NURSERY. ALL PLANT MATERIAL MUST CONFORM TO THE LATEST EDITION OF THE "BC LANDSCAPE STANDARD". PROVIDE CERTIFICATION UPON REQUEST. ALL LANDSCAPING AND LANDSCAPE MATERIALS TO CONFORM TO THE LATEST EDITION OF THE BCLNA/BCSLA "LANDSCAPE STANDARDS"
- MIN. GROWING MEDIUM DEPTHS OVER PREPARED SUBGRADE SHALL BE :

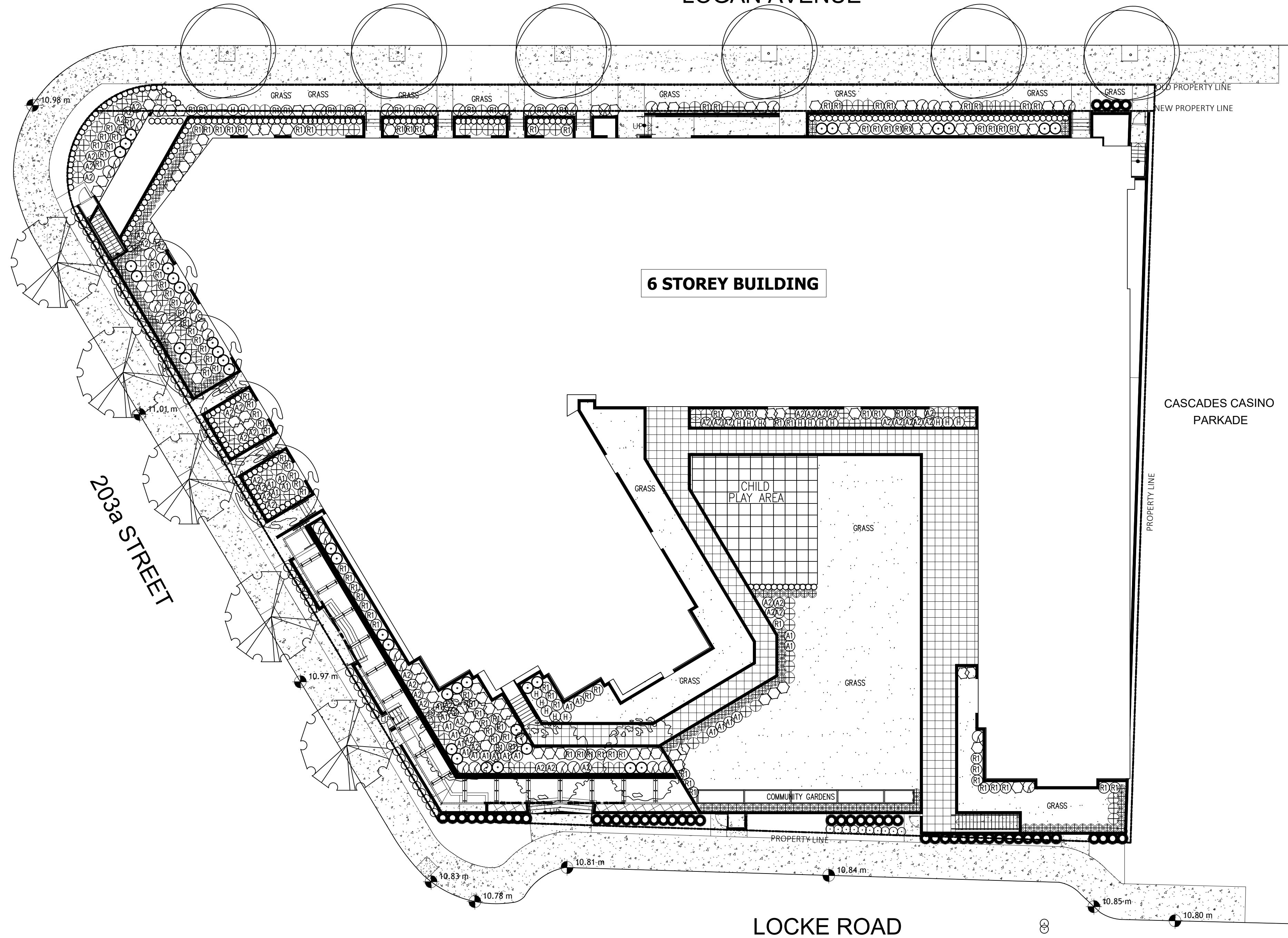
LAWN AREAS	450 mm
GROUND COVER AREAS	450 mm
SHRUB AREAS	450 mm
TREE PITS	300 mm AROUND ROOT BALL
- GROWING MEDIUM SHALL HAVE PHYSICAL AND CHEMICAL PROPERTIES AS DESCRIBED IN THE STANDARDS FOR LEVEL 2 AND LEVEL 3 AREAS, EXCEPT FOR AREAS OVER STRUCTURES WHERE THE MEDIUM SHALL CONFORM TO THE REQUIREMENTS FOR LEVEL 1 APPLICATIONS. PROCESSING AND MIXING OF GROWING MEDIUM COMPONENTS SHALL BE DONE OFF-SITE USING A MECHANIZED SCREENING PROCESS. PROPOSED GROWING MEDIUM SHALL BE TESTED BY A RECOGNIZED LABORATORY. THE CONTRACTOR SHALL GUARANTEE THAT THE SOIL SUBMITTED FOR TESTING IS A REPRESENTATIVE SAMPLE TAKEN FROM THE SOIL THAT WILL BE USED AT THE SITE.
- ON-SITE OR IMPORTED SOILS SHALL SATISFY THE REQUIREMENTS OF THE STANDARDS FOR GROWING MEDIUM. SOILS SHALL BE VIRTUALLY FREE FROM SUBSOIL, WOOD INCL. WOODY PLANT PARTS, WEED OR REPRODUCTIVE PARTS OF WEEDS, PLANT PATHOGENIC ORGANISMS, TOXIC MATERIALS, STONES OVER 30 MM AND FOREIGN OBJECTS.
- ALL PLANTING BEDS SHALL RECEIVE MIN. 50 MM BARK MULCH.
- PLANT SPECIES AND VARIETIES MAY NOT BE SUBSTITUTED WITHOUT THE APPROVAL OF THE LANDSCAPE ARCHITECT.
- THE CONTRACTOR SHALL GUARANTEE ALL MATERIALS AND WORKMANSHIP FOR A PERIOD OF ONE (1) FULL YEAR FROM THE DATE OF FINAL ACCEPTANCE, UNLESS OTHERWISE SPECIFIED. ALL PLANT MATERIAL NOT SURVIVING, OR IN POOR CONDITION DURING THE GUARANTEE PERIOD SHALL BE REPLACED BY THE CONTRACTOR AT NO EXTRA COST TO THE OWNER.
- THE CONTRACTOR SHALL CLEAR AWAY FROM THE SITE ALL RUBBISH AS IT ACCUMULATES, AND SHALL, AT THE COMPLETION OF THE WORK, LEAVE THE WORK AND THE SITE THEREOF IN A CLEAN AND PRESENTABLE CONDITION, FREE FROM ALL OBSTRUCTIONS.



TREE PLANTING DETAIL SECTION N.T.S.



PLANTING DETAIL - SHRUBS & GRD. COVER PLANTS SECTION N.T.S.



6 STOREY BUILDING

CASCADES CASINO PARKADE

LOCKE ROAD

203a STREET

KEY	BOTANICAL NAME	PLANT LIST COMMON NAME	QTY.	SIZE	SPACING	REMARKS
	LIQUIDAMBAR STYRACIFLUA 'WORPLESDON'	SWEET GUM		6 CM. CAL.	AS SHOWN	B. & B.
	ACER RUBRUM 'OCTOBER GLORY'	OCTOBER GLORY MAPLE		6 CM. CAL.	AS SHOWN	B. & B.
	PARROTIA PERSICA	PERSIAN IRONWOOD	2	6 CM. CAL.	AS SHOWN	B. & B.
	CORNUS FLORIDA 'RUBRUM'	RED FLOWERING DOGWOOD	4	6 CM. CAL.	AS SHOWN	B. & B.
	AZALEA JAPONICA 'HINO CRIMSON'	CRIMSON AZALEA	98	#2 POT	85 CM. O.C.	
	AZALEA NORTHERN LIGHTS 'MANDARIN LIGHTS'	NORTHERN LIGHTS AZALEA	22	#3 POT	90 CM. O.C.	
	AZALEA JAPONICA (VARIOUS)	JAPANESE AZALEA	43	#3 POT	90 CM. O.C.	
	ABELIA 'EDWARD GOUCHER'	EDWARD GOUCHER ABELIA	83	#3 POT	90 CM. O.C.	
	BUXUS MACROPHYLLA 'WINTER GEM'	ASIAN BOXWOOD	60	#3 POT	45 CM. O.C.	
	HYDRANGEA MACROPHYLLA 'NIKKO BLUE'	HYDRANGEA	29	#3 POT	90 CM. O.C.	
	BERBERIS THUNBERGII 'ATROPURPUREA'	PURPLE BERBERIS	77	#3 POT	70 CM. O.C.	
	MEDIUM RHODODENDRON (VARIOUS)	RHODODENDRON	116	#3 POT	90 CM. O.C.	
	POLYSTICHUM MUNITUM	SWARD FERN	10	#3 POT	90 CM. O.C.	
	HOSTA (VARIOUS)	HOSTA	17	#3 POT	90 CM. O.C.	
	SYRINGA VULGARIS 'MICHEL BUCHNER'	LILAC	30	#3 POT	90 CM. O.C.	
	PRUNUS LAUROCERASUS 'OTTO LUYKEN'	OTTO LUYKEN LAUREL	232	#3 POT	70 CM. O.C.	
	THUJA OCCIDENTALIS 'SMARAGD'	EMERALD ARBORVITAE	43	1.50 METERS	70 CM. O.C.	

DATE	REVISIONS	NO.
NOV/19	New Site Plan	3
AUG/19	Revised Site Plan	2
Feb/19	Revised Site Plan	1

C.KAVOLINAS & ASSOCIATES INC.
BCSLA CSLA
2462 JONQUIL COURT
ABBOTSFORD, B.C.
V3G 3E8
PHONE (604) 857-2376

CLIENT
MR. LUC GOSSELIN
WHITETAIL HOMES
UNIT #104
3550 Mt. LEHMAN ROAD
ABBOTSFORD, B.C.
V4X 2M9

TITLE
PLAN VIEW
LANDSCAPE PLAN
LOGAN AVENUE
APARTMENTS
20350 20370 LOGAN AVENUE
CITY OF LANGLEY, B.C.

SCALE 1:200	DATE FEB/19
DRAFT	CHK'D
ENG.	CHK'D
APPR'D	AS BUILT

PRINTED	JOB No.
	DRAWING No.
	L-1