

CITY OF  
LANGLEY



## EXPLANATORY MEMO

### ROAD CLOSURE BYLAW NO. 3161

The purpose of Bylaw 3161 is to remove the dedication of highway and to close the portion of road (75.1 m<sup>2</sup>) Right of Way located between 5500 and 5510 Brydon Crescent as the City intends to sell the property and the road is no longer required.



## ROAD CLOSURE BYLAW No. 3161

A bylaw to close and remove the dedication of a portion of highway located between 5500 and 5510 Brydon Crescent.

WHEREAS, pursuant to Section 40 of the *Community Charter*, Council may, by bylaw, close all of a highway to traffic and remove the dedication of the highway if, prior to adopting the bylaw, Council publishes notice of its intention in a newspaper and provides an opportunity for persons who consider they are affected by the bylaw to make representations to Council;

AND WHEREAS the Council of the City of Langley deems it expedient to close to traffic and remove the dedication of highway from the public highway comprising 75.1 square metres, created by the deposit of Plan 21709, which area is shown outlined in bold black on Schedule A - Reference Plan of Closed Road EPP109114;

AND WHEREAS the City of Langley has published notice of its intention to close that portion of highway to traffic and to remove its dedication as highway, has delivered notice to the operators of utilities whose transmission or distribution facilities or work Council considers will be affected, and has provided an opportunity for persons who consider they are affected by the closure and disposition to make representations to Council;

NOW THEREFORE the Council of the City of Langley in open meeting assembled enacts as follows:

### 1. Title

- (1) This bylaw shall be cited as the "Road Closure Bylaw No. 3161, 2021".

### 2. Authorization and Road Closure

- (1) Attached to this Bylaw as Schedule "A" and forming part of this Bylaw is a copy of the reference plan of highway closure EPP109114 prepared by Scott M. Todd, BCLS completed and checked on the 8<sup>th</sup> day of February, 2021 (the "Road Closure Plan");

- (2) The City hereby authorizes the closure to traffic and removal of highway dedication of the approximate 75.1 square metre portion of highway created by the deposit of Plan 21709, labeled "Reference Plan to Accompany the City of Langley Road Closure Bylaw No. 3161, 2021 to close lane dedicated on Plan 21709" on the Road Closure Plan (the "Closed Road").
- (3) On deposit of the Road Closure Plan and all other documentation for the closure of the Closed Road in the New Westminster Land Title Office, the Closed Road is closed to public traffic, it shall cease to be public highway, and its dedication as a highway is cancelled.
- (4) The Mayor and Corporate Officer are authorized to execute all deeds of land, plans, and other documentation necessary to effect this road closure.

READ A FIRST, SECOND AND THIRD TIME this twenty-sixth day of July, 2021.

OPPORTUNITY FOR PUBLIC COMMENT this     day of     , 2021.

FINALLY ADOPTED this     day of     , 2021.

\_\_\_\_\_  
**MAYOR**

\_\_\_\_\_  
**CORPORATE OFFICER**

# SCHEDULE "A"

## REFERENCE PLAN OF CLOSED ROAD EPP109114

PLAN EPP109114

REFERENCE PLAN TO ACCOMPANY THE CITY OF LANGLEY  
ROAD CLOSURE BYLAW No. 3161, 2021  
TO CLOSE LANE DEDICATED ON PLAN 21709  
SECTION 3 TOWNSHIP 8 NEW WESTMINSTER DISTRICT  
PURSUANT TO SECTION 126, LAND TITLE ACT AND SECTION 40, COMMUNITY CHARTER  
OF BRITISH COLUMBIA

DEPICTED ARE ALL METERS AND DENOTES "NEARLY"  
IN ACCORDANCE WITH THE METRIC CONVERSION ACT  
AND THE METRIC CONVERSION REGULATIONS.

THIS PLAN USES THE INTEGRATED SURVEY AREA No. 45  
IN ACCORDANCE WITH THE SURVEY ACT AND THE SURVEY  
REGULATIONS.

THE UTM COORDINATES AND DENOTES "NEARLY"  
IN ACCORDANCE WITH THE METRIC CONVERSION ACT  
AND THE METRIC CONVERSION REGULATIONS.

THIS PLAN SHOWS INDIVIDUAL LOTS AND DISTRICTS  
AND THE UTM COORDINATES AND DENOTES "NEARLY"  
IN ACCORDANCE WITH THE METRIC CONVERSION ACT  
AND THE METRIC CONVERSION REGULATIONS.

THE UTM COORDINATES AND DENOTES "NEARLY"  
IN ACCORDANCE WITH THE METRIC CONVERSION ACT  
AND THE METRIC CONVERSION REGULATIONS.

THE UTM COORDINATES AND DENOTES "NEARLY"  
IN ACCORDANCE WITH THE METRIC CONVERSION ACT  
AND THE METRIC CONVERSION REGULATIONS.

THE UTM COORDINATES AND DENOTES "NEARLY"  
IN ACCORDANCE WITH THE METRIC CONVERSION ACT  
AND THE METRIC CONVERSION REGULATIONS.

THE UTM COORDINATES AND DENOTES "NEARLY"  
IN ACCORDANCE WITH THE METRIC CONVERSION ACT  
AND THE METRIC CONVERSION REGULATIONS.

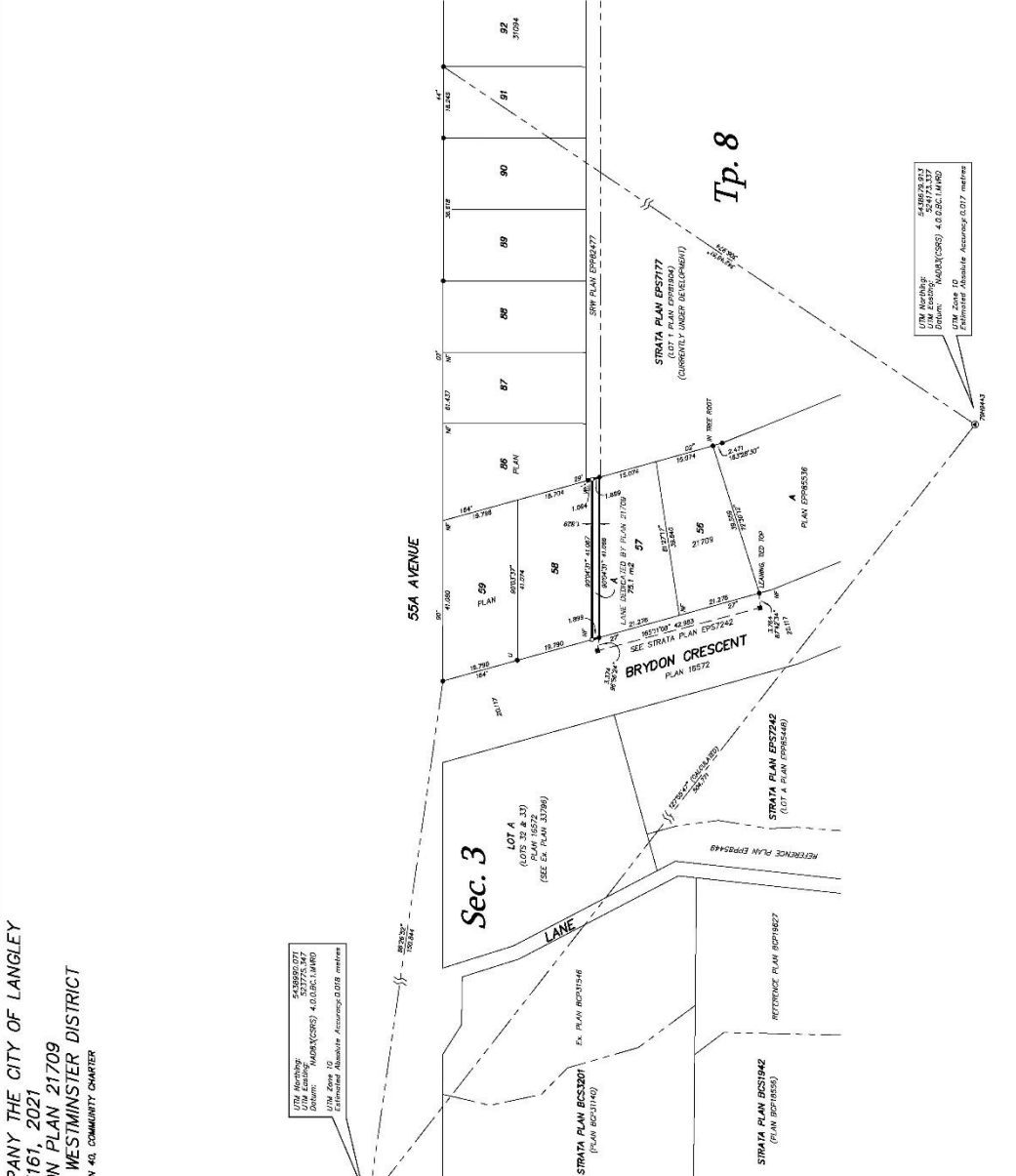
THE UTM COORDINATES AND DENOTES "NEARLY"  
IN ACCORDANCE WITH THE METRIC CONVERSION ACT  
AND THE METRIC CONVERSION REGULATIONS.

THE UTM COORDINATES AND DENOTES "NEARLY"  
IN ACCORDANCE WITH THE METRIC CONVERSION ACT  
AND THE METRIC CONVERSION REGULATIONS.

THE UTM COORDINATES AND DENOTES "NEARLY"  
IN ACCORDANCE WITH THE METRIC CONVERSION ACT  
AND THE METRIC CONVERSION REGULATIONS.

THE UTM COORDINATES AND DENOTES "NEARLY"  
IN ACCORDANCE WITH THE METRIC CONVERSION ACT  
AND THE METRIC CONVERSION REGULATIONS.

THE UTM COORDINATES AND DENOTES "NEARLY"  
IN ACCORDANCE WITH THE METRIC CONVERSION ACT  
AND THE METRIC CONVERSION REGULATIONS.



UTM Markings:  
Easting: 548929.212  
Northing: 4908000.000  
Datum: WGS84(CSRS) 4.0 GSC(1480)  
UTM Zone ID: 18Q UTM Zone 18Q  
Estimated Absolute Accuracy: 0.017 meters

Leak, Osmund & Associates  
P.L.L.C. (INCORPORATED IN BRITISH COLUMBIA)  
100-11111 100th Street, Surrey, BC V3R 1G1  
Tel: 604-591-1111 Fax: 604-591-1112  
www.loa.ca

THIS PLAN USES METRIC UNITS AND THE METRO VANDOUVER REGIONAL DISTRICT

THE FIELD SURVEY REPRESENTED BY THIS PLAN  
WAS COMPLETED ON FEBRUARY 2021.  
SCOTT A. HEDGECOCK P.E.