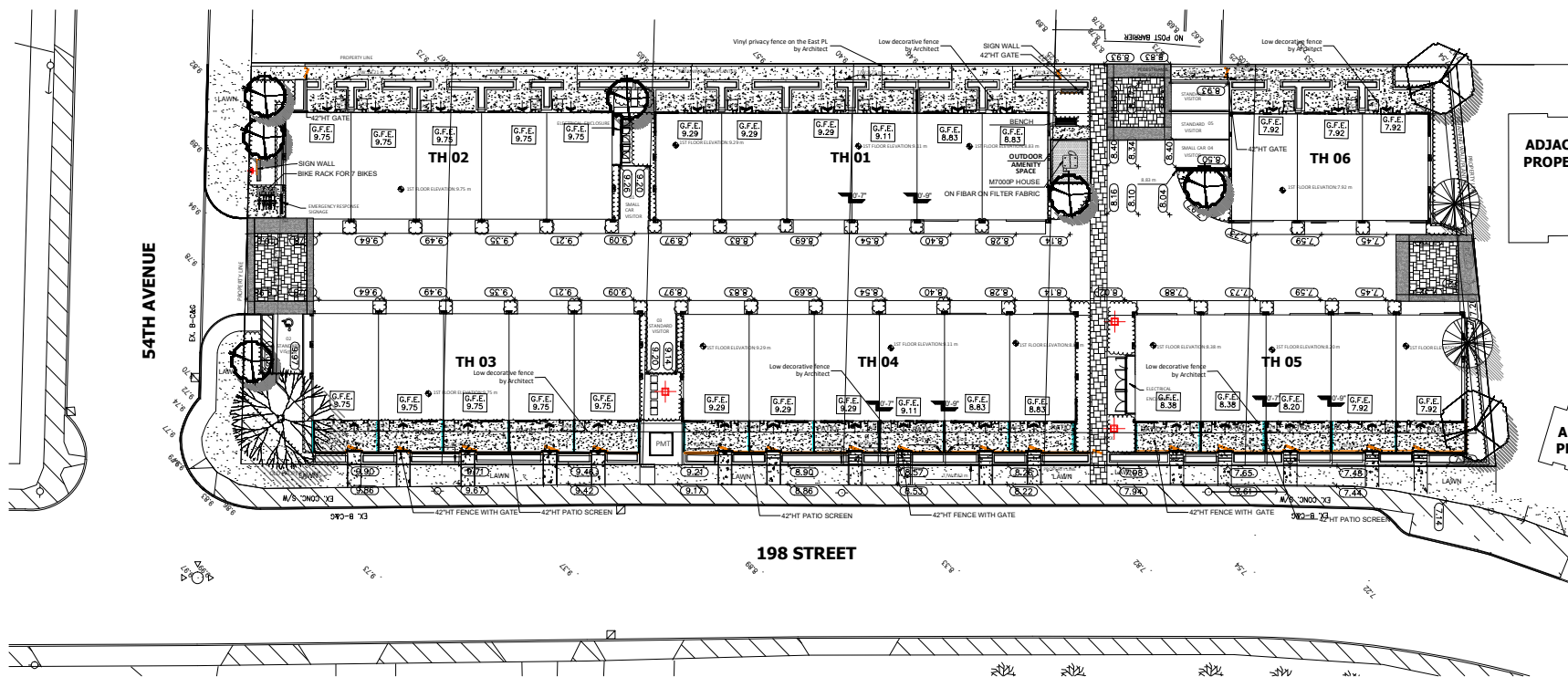


SEAL:



**FURNITURE**

M700P RED HOUSE  
BY KOMPAN, RecTec Industries

MAGLIN BIKE RACK ML8700-7 BIKES  
METAL MATTE FINISH,  
BLACK COLOUR,  
POWDER COATED.

MAGLIN BENCH - SCB1600-W

NOTE:  
ALL FURNITURE TO BE SURFACE MOUNT AS PER  
MANUFACTURER SPECIFICATIONS

**FENCING LEGEND**

42HT ALUMINUM GATE

42HT. PATIO SCREEN

NOTE:  
MAXIMUM COMBINED HEIGHT OF WALLS PLUS  
FENCE IS 2.0M

**LIGHTING LEGEND**

UPLIGHT

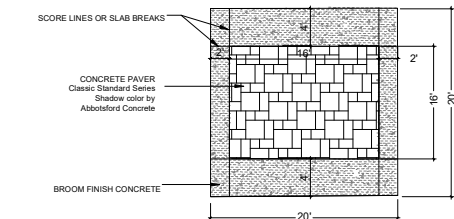
BOLLARD LIGHT

**PLANT SCHEDULE**

KEY		QTY	BOTANICAL NAME	COMMON NAME	PLANTED SIZE / REMARKS
TREE					
	1		CERCIDIPHYLLUM JAPONICUM	KATSURA TREE	6CM CAL; 1.8M STD; B&B
	6		FAGUS SYLVATICA 'DAWYCK GOLD'	DAWYCK GOLD BEECH	6CM CAL; B&B
	2		PICEA OMORIKA 'BRUNS'	BRUNS SERBIAN SPRUCE	3.0M HT; B&B
	2		STYRAX JAPONICUS 'PINK CHIMES'	PINK FLOWERED JAPANESE SNOWBELL	6CM CAL; 1.8M STD; B&B

NOTE: \* PLANT SIZES IN THIS LIST ARE SPECIFIED ACCORDING TO THE BC LANDSCAPE STANDARD AND CANADIAN LANDSCAPE STANDARD, LATEST EDITION. CONTAINER SIZES SPECIFIED AS PER CNLA STANDARD. BOTH PLANT SIZE AND CONTAINER SIZE ARE THE MINIMUM ACCEPTABLE SIZES. \* REFER TO SPECIFICATIONS FOR DEFINED CONTAINER MEASUREMENTS AND OTHER PLANT MATERIAL REQUIREMENTS. \* SEARCH AND REVIEW: MAKE PLANT MATERIAL AVAILABLE FOR OPTIONAL REVIEW BY LANDSCAPE ARCHITECT AT SOURCE OF SUPPLY. AREA OF SEARCH TO INCLUDE LOWER MAINLAND AND FRASER VALLEY. \* SUBSTITUTIONS: OBTAIN WRITTEN APPROVAL FROM THE LANDSCAPE ARCHITECT PRIOR TO MAKING ANY SUBSTITUTIONS TO THE SPECIFIED MATERIAL. UNAPPROVED SUBSTITUTIONS WILL BE REJECTED. ALLOW A MINIMUM OF FIVE DAYS PRIOR TO DELIVERY FOR REQUEST TO SUBSTITUTE. SUBSTITUTIONS ARE SUBJECT TO BC LANDSCAPE STANDARD AND CANADIAN LANDSCAPE STANDARD. \* DEFINITION OF CONDITIONS OF AVAILABILITY. \* ALL LANDSCAPE MATERIAL AND WORKMANSHIP MUST MEET OR EXCEED BC LANDSCAPE STANDARD AND CANADIAN LANDSCAPE STANDARD LATEST EDITION. \* ALL PLANT MATERIAL MUST BE PROVIDED FROM CERTIFIED DISEASE FREE NURSERY. \* BIO-SOLIDS NOT PERMITTED IN GROWING MEDIUM UNLESS AUTHORIZED BY LANDSCAPE ARCHITECT.

NOTE:  
- All soft landscape areas to be irrigated with automatic installation to I.I.A.B.C. Standards, latest edition.  
- Grading by civil engineer and architects.



CLIENT: SYNC DEVELOPMENTS  
WITH: KEYSTONE ARCHITECTURE & PLANNING LTD.

PROJECT:  
**SYNC CITY TOWNHOUSE DEVELOPMENT**  
5364, 5368, 5376, 5380  
198TH STREET AND 19824  
54TH AVENUE  
LANGLEY

DRAWING TITLE:  
**LANDSCAPE PLAN**

DATE: 17.APR.07 DRAWING NUMBER:  
SCALE: 1/16"=1'-0"  
DRAWN: DD DD  
DESIGN: DD DD  
CHKD: PCM PC

PMG PROJECT NUMBER: 21-077



**L1**

OF 4

21-077-5.2P







Table with 2 columns: No. and Description. Contains 17 numbered items detailing landscape construction and maintenance requirements.

CLIENT: SYNC DEVELOPMENTS  
WITH: KEYSTONE ARCHITECTURE & PLANNING LTD.

PROJECT: SYNC CITY TOWNHOUSE DEVELOPMENT  
5364, 5368, 5376, 5380  
10878 STREET AND 19824  
54TH AVENUE  
LANGLEY  
DRAWING TITLE: LANDSCAPE SPECIFICATIONS

DATE: 17.APR.07 DRAWING NUMBER:  
SCALE: AS NOTED  
DRAWN: DD DO  
DESIGN: DD DO  
CHECK: PCM FC OF 4

PART THREE SOFT LANDSCAPE DEVELOPMENT - CONT.

- 18. For all plant material the Landscape Architect reserves the right to extend the Contractor's responsibility for another growing season. In his opinion, leaf and development and growth will be sufficient to ensure satisfactory growth.
19. Where the Owner is responsible for plant maintenance and has provided adequate instructions, the plant replacement terms of the contract may be deemed met.
20. The Landscape Architect shall determine whether replacement has been provided according to the Canadian Landscape Standard, Section 15. Maintenance on the grade. The required maintenance shall include a minimum of 2-year "Mature, Rule 7" Section 15.1 (Establishment Period).
21. The Landscape Contractor is responsible to replace any plant material or to repair any construction measures in the Contract that is damaged or stolen until the issuance of the Certificate of Completion.
22. Deviation from the specifications upon extension of the Warranty Period shall be determined by the Landscape Architect.

19. MAINTENANCE ON THE GRADE

- 1. Verify that watering and protection schedule is completely installed and accepted before beginning work. Contact Landscape Architect for instructions for all plants.
2. Coordinate work with other trades, plumbers and other trades.
3. Verify that all plants are protected from damage during construction.
4. Provide cover for all plants with 2" x 4" x 8" PVC pipe for plants with soil which requires special watering needs.
5. All plants must receive a minimum depth of 1" (100mm) of mulch during the establishment period. Mulch must be applied in a minimum of 2" (50mm) of mulch during the establishment period.
6. Cover dead plants with alternate cover if specified in drawings details with clear plastic covering 1/2" (12mm) thick. Detail appropriate drainage systems prior to planting ground.

20. PLANTING AND PROTECTION

- 1. Verify that "establishment" mulch is to be applied uniformly to a depth of 1" (100mm) over the entire planting area. The mulch should be applied in a minimum of 2" (50mm) of mulch during the establishment period.
2. Verify that the mulch is applied in a minimum of 2" (50mm) of mulch during the establishment period.
3. Verify that the mulch is applied in a minimum of 2" (50mm) of mulch during the establishment period.
4. Verify that the mulch is applied in a minimum of 2" (50mm) of mulch during the establishment period.
5. Verify that the mulch is applied in a minimum of 2" (50mm) of mulch during the establishment period.

PART THREE SOFT LANDSCAPE DEVELOPMENT - CONT.

- 1. Application Rates:
2.1 Fertilizer: 10-10-10 (N-P-K)
2.2 Fertilizer: 10-10-10 (N-P-K)
2.3 Fertilizer: 10-10-10 (N-P-K)
2.4 Fertilizer: 10-10-10 (N-P-K)
2.5 Fertilizer: 10-10-10 (N-P-K)
2.6 Fertilizer: 10-10-10 (N-P-K)
2.7 Fertilizer: 10-10-10 (N-P-K)
2.8 Fertilizer: 10-10-10 (N-P-K)
2.9 Fertilizer: 10-10-10 (N-P-K)
2.10 Fertilizer: 10-10-10 (N-P-K)

21. IRRIGATION SYSTEMS

- 1. General:
2.1 Irrigation system shall be installed in accordance with the specifications.
2.2 Irrigation system shall be installed in accordance with the specifications.
2.3 Irrigation system shall be installed in accordance with the specifications.
2.4 Irrigation system shall be installed in accordance with the specifications.
2.5 Irrigation system shall be installed in accordance with the specifications.

22. IRRIGATION SYSTEMS

- 1. General:
2.1 Irrigation system shall be installed in accordance with the specifications.
2.2 Irrigation system shall be installed in accordance with the specifications.
2.3 Irrigation system shall be installed in accordance with the specifications.
2.4 Irrigation system shall be installed in accordance with the specifications.
2.5 Irrigation system shall be installed in accordance with the specifications.

23. IRRIGATION SYSTEMS

- 1. General:
2.1 Irrigation system shall be installed in accordance with the specifications.
2.2 Irrigation system shall be installed in accordance with the specifications.
2.3 Irrigation system shall be installed in accordance with the specifications.
2.4 Irrigation system shall be installed in accordance with the specifications.
2.5 Irrigation system shall be installed in accordance with the specifications.

24. IRRIGATION SYSTEMS

- 1. General:
2.1 Irrigation system shall be installed in accordance with the specifications.
2.2 Irrigation system shall be installed in accordance with the specifications.
2.3 Irrigation system shall be installed in accordance with the specifications.
2.4 Irrigation system shall be installed in accordance with the specifications.
2.5 Irrigation system shall be installed in accordance with the specifications.

25. IRRIGATION SYSTEMS

- 1. General:
2.1 Irrigation system shall be installed in accordance with the specifications.
2.2 Irrigation system shall be installed in accordance with the specifications.
2.3 Irrigation system shall be installed in accordance with the specifications.
2.4 Irrigation system shall be installed in accordance with the specifications.
2.5 Irrigation system shall be installed in accordance with the specifications.

26. IRRIGATION SYSTEMS

- 1. General:
2.1 Irrigation system shall be installed in accordance with the specifications.
2.2 Irrigation system shall be installed in accordance with the specifications.
2.3 Irrigation system shall be installed in accordance with the specifications.
2.4 Irrigation system shall be installed in accordance with the specifications.
2.5 Irrigation system shall be installed in accordance with the specifications.

27. IRRIGATION SYSTEMS

- 1. General:
2.1 Irrigation system shall be installed in accordance with the specifications.
2.2 Irrigation system shall be installed in accordance with the specifications.
2.3 Irrigation system shall be installed in accordance with the specifications.
2.4 Irrigation system shall be installed in accordance with the specifications.
2.5 Irrigation system shall be installed in accordance with the specifications.

PART THREE SOFT LANDSCAPE DEVELOPMENT

- 1. General:
2.1 Irrigation system shall be installed in accordance with the specifications.
2.2 Irrigation system shall be installed in accordance with the specifications.
2.3 Irrigation system shall be installed in accordance with the specifications.
2.4 Irrigation system shall be installed in accordance with the specifications.
2.5 Irrigation system shall be installed in accordance with the specifications.

28. IRRIGATION SYSTEMS

- 1. General:
2.1 Irrigation system shall be installed in accordance with the specifications.
2.2 Irrigation system shall be installed in accordance with the specifications.
2.3 Irrigation system shall be installed in accordance with the specifications.
2.4 Irrigation system shall be installed in accordance with the specifications.
2.5 Irrigation system shall be installed in accordance with the specifications.

29. IRRIGATION SYSTEMS

- 1. General:
2.1 Irrigation system shall be installed in accordance with the specifications.
2.2 Irrigation system shall be installed in accordance with the specifications.
2.3 Irrigation system shall be installed in accordance with the specifications.
2.4 Irrigation system shall be installed in accordance with the specifications.
2.5 Irrigation system shall be installed in accordance with the specifications.

30. IRRIGATION SYSTEMS

- 1. General:
2.1 Irrigation system shall be installed in accordance with the specifications.
2.2 Irrigation system shall be installed in accordance with the specifications.
2.3 Irrigation system shall be installed in accordance with the specifications.
2.4 Irrigation system shall be installed in accordance with the specifications.
2.5 Irrigation system shall be installed in accordance with the specifications.

31. IRRIGATION SYSTEMS

- 1. General:
2.1 Irrigation system shall be installed in accordance with the specifications.
2.2 Irrigation system shall be installed in accordance with the specifications.
2.3 Irrigation system shall be installed in accordance with the specifications.
2.4 Irrigation system shall be installed in accordance with the specifications.
2.5 Irrigation system shall be installed in accordance with the specifications.

32. IRRIGATION SYSTEMS

- 1. General:
2.1 Irrigation system shall be installed in accordance with the specifications.
2.2 Irrigation system shall be installed in accordance with the specifications.
2.3 Irrigation system shall be installed in accordance with the specifications.
2.4 Irrigation system shall be installed in accordance with the specifications.
2.5 Irrigation system shall be installed in accordance with the specifications.

33. IRRIGATION SYSTEMS

- 1. General:
2.1 Irrigation system shall be installed in accordance with the specifications.
2.2 Irrigation system shall be installed in accordance with the specifications.
2.3 Irrigation system shall be installed in accordance with the specifications.
2.4 Irrigation system shall be installed in accordance with the specifications.
2.5 Irrigation system shall be installed in accordance with the specifications.

34. IRRIGATION SYSTEMS

- 1. General:
2.1 Irrigation system shall be installed in accordance with the specifications.
2.2 Irrigation system shall be installed in accordance with the specifications.
2.3 Irrigation system shall be installed in accordance with the specifications.
2.4 Irrigation system shall be installed in accordance with the specifications.
2.5 Irrigation system shall be installed in accordance with the specifications.

PART ONE GENERAL REQUIREMENTS

- 1. GENERAL:
2.1 Irrigation system shall be installed in accordance with the specifications.
2.2 Irrigation system shall be installed in accordance with the specifications.
2.3 Irrigation system shall be installed in accordance with the specifications.
2.4 Irrigation system shall be installed in accordance with the specifications.
2.5 Irrigation system shall be installed in accordance with the specifications.

2. IRRIGATION SYSTEMS

- 1. General:
2.1 Irrigation system shall be installed in accordance with the specifications.
2.2 Irrigation system shall be installed in accordance with the specifications.
2.3 Irrigation system shall be installed in accordance with the specifications.
2.4 Irrigation system shall be installed in accordance with the specifications.
2.5 Irrigation system shall be installed in accordance with the specifications.

3. IRRIGATION SYSTEMS

- 1. General:
2.1 Irrigation system shall be installed in accordance with the specifications.
2.2 Irrigation system shall be installed in accordance with the specifications.
2.3 Irrigation system shall be installed in accordance with the specifications.
2.4 Irrigation system shall be installed in accordance with the specifications.
2.5 Irrigation system shall be installed in accordance with the specifications.

4. IRRIGATION SYSTEMS

- 1. General:
2.1 Irrigation system shall be installed in accordance with the specifications.
2.2 Irrigation system shall be installed in accordance with the specifications.
2.3 Irrigation system shall be installed in accordance with the specifications.
2.4 Irrigation system shall be installed in accordance with the specifications.
2.5 Irrigation system shall be installed in accordance with the specifications.

5. IRRIGATION SYSTEMS

- 1. General:
2.1 Irrigation system shall be installed in accordance with the specifications.
2.2 Irrigation system shall be installed in accordance with the specifications.
2.3 Irrigation system shall be installed in accordance with the specifications.
2.4 Irrigation system shall be installed in accordance with the specifications.
2.5 Irrigation system shall be installed in accordance with the specifications.

6. IRRIGATION SYSTEMS

- 1. General:
2.1 Irrigation system shall be installed in accordance with the specifications.
2.2 Irrigation system shall be installed in accordance with the specifications.
2.3 Irrigation system shall be installed in accordance with the specifications.
2.4 Irrigation system shall be installed in accordance with the specifications.
2.5 Irrigation system shall be installed in accordance with the specifications.

7. IRRIGATION SYSTEMS

- 1. General:
2.1 Irrigation system shall be installed in accordance with the specifications.
2.2 Irrigation system shall be installed in accordance with the specifications.
2.3 Irrigation system shall be installed in accordance with the specifications.
2.4 Irrigation system shall be installed in accordance with the specifications.
2.5 Irrigation system shall be installed in accordance with the specifications.

8. IRRIGATION SYSTEMS

- 1. General:
2.1 Irrigation system shall be installed in accordance with the specifications.
2.2 Irrigation system shall be installed in accordance with the specifications.
2.3 Irrigation system shall be installed in accordance with the specifications.
2.4 Irrigation system shall be installed in accordance with the specifications.
2.5 Irrigation system shall be installed in accordance with the specifications.