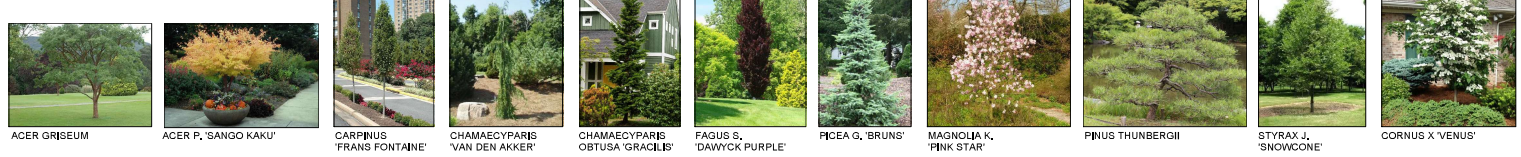


PLANT SCHEDULE			PMG PROJECT NUMBER: 21-056		
KEY	QTY	BOTANICAL NAME	COMMON NAME	PLANTED SIZE	REMARKS
TR	5	ACER GRISSUM	PAPERBARK MAPLE	8CM CAL, 1.5M MIN. STD. B&B	
TR	3	ACER PALMATUM 'SANGO KAKU'	CORAL BARK MAPLE	2.0M HT. B&B	
TR	3	CARPINUS BETULUS 'FRANS FONTAINE'	FRANS FONTAINE EUROPEAN HORNBUM	5CM CAL, 1.5M MIN. STD. B&B	
TR	10	CHAMAECYPARIS 'VAN DEN AKKER'	VAN DEN AKKER FALSESPYRESS	2.5M HT. B&B	
TR	6	CHAMAECYPARIS 'OBTUSA 'GRACILIS'	HINDI FALSE SPYRESS	#15 POT, UPRIGHT FORM	
TR	3	CORNUS X 'VENUS'	VENUS FLOWERING DOGWOOD	8CM CAL, 1.5M MIN. STD. B&B	
TR	4	FAGUS SYLVATICA 'DAWYCK PURPLE'	DAWYCK PURPLE BEECH	8CM CAL, 1.5M STD. B&B	
TR	6	MAGNOLIA 'NOBIS STELLATA 'PINK STAR'	PINK STAR MAGNOLIA	#15 POT, TREE FORM	
TR	4	FICEA G. 'BRUNS'	BRUNS WHITE SPRUCE	2.5M HT. B&B	
TR	4	PRINUS THUNBERGII	JAPANESE BLACK PINE	2.5M HT. B&B	
TR	3	STYRAX J.	STREET TREE	8CM CAL, 1.5M STD. B&B	
TR	2	STYRAX JAPONICUS 'SNOWCONE'	SNOWCONE JAPANESE SNOWBELL	8CM CAL, 1.5M STD. B&B	
SR	33	ABELIA X 'EDWARD GOUCHER'	EDWARD GOUCHER ABELIA	#3 POT, 50CM	
SR	25	ABELIA X 'KALEIDOSCOPE'	KALEIDOSCOPE ABELIA	#3 POT, 50CM	
AU	51	AUCUBA JAPONICA 'ROZANNE'	ROZANNE JAPANESE AUCUBA	#3 POT, 40CM	
B	192	BULBUS SEVENBRIDERS	COMMON BOWWOOD	#2 POT, 40CM	
DOM	10	CAMELLIA SASANOQA 'GREEN #4205'	OCTOBER GREEN CAMELLIA	#3 POT, 60 CM	
CSB	6	CAMELLIA SASANOQA 'SHI OH GASHIRA'	SHI OH GASHIRA CAMELLIA	#3 POT, 50CM	
CO	5	CORNUS 'ARCTIC FIRE'	ARCTIC FIRE DOGWOOD	#3 POT, 50CM	
E	7	EUCONYMIUS ALATA 'COMPACTUS'	COMPACT WINGED BURNING BUSH	#3 POT, 50CM	
HM	17	HYDRANGEA MACROPHYLLA 'ROTSCHWANZ'	ROTSCHWANZ HYDRANGEA	#3 POT, 50CM	
K	9	KALMIA LATIFOLIA 'OBTRO RED'	OBTRO RED MOUNTAIN LAUREL	#3 POT, 50CM	
MA	58	MARONIA ACQUIFOLIUM 'COMPACTA'	COMPACT OREGON GRAPE HOLLY	#3 POT, 40CM	
MD	3	MICROBOTA 'OCCIDENTALIS'	RUSSELN CYPRESS	#3 POT, 50CM	
ND	30	NANDINA DOMESTICA 'MOON BAY'	MOON BAY NANDINA	#3 POT	
P	15	PRINUS MUGO 'PUMBLE'	DIABRY MUGO FINE	#3 POT, 50CM	
Z	92	PRUNUS LAUROCEBATUS 'ZABELIANA'	ZABEL LAUREL	#2 POT, 30CM	
R1	13	RHOODODENDRON 'ELIZABETH HOBBE'	ELIZABETH HOBBE RHOODODENDRON	#3 POT, 50CM	
RO	42	ROSA 'SCARLET MEDELAN'	SCARLET MEDELAN ROSE	#3 POT, 60CM	
BP	8	SPIRAEA X 'BUNALDA 'GOLDFLAME'	GOLDFLAME SPIREA	#2 POT, 45CM	
SDP	36	SPIREA X 'NCS2'	DOUBLE PLAY DOZZIE SPIREA	#2 POT	
Y	60	TAXUS X 'MEXIA 'HICKSB'	HICKS YEW	1.5M HT. B&B	
BHY	40	TAXUS X 'MEXIA 'STONEHENGE BRINNY'	STONEHENGE BRINNY YEW	#3 POT	
TH	60	THUNJA OCCIDENTALIS 'SMARAGD'	EMERALD GREEN CEDAR	1.5M HT. B&B	
D	34	VEIBURNUM 'DAVID'	DAVID'S VEIBURNUM	#2 POT, 30CM	
GR	90	CALAMAGROSTIS A. 'KARL FORSTER'	KARL FORSTER FEATHERREED GRASS	#2 POT, FULL	
M	33	HEMEROCALLIS 'MORNING LIGHT'	MORNING LIGHT SILVER GRASS	#2 POT	
PER	23	ASTILE 'MONTGOMERY'	MONTGOMERY ASTILE	#1 POT, 30CM	
HE	54	HEMEROCALLIS 'STELLA D'ORO'	STELLA D'ORO DAYLILY	#1 POT, 1-2 FAN	
LI	143	IRIDIOP 'MUSCARI'	BLUE LILY-TURP	#1 POT	
GC					
CA	36	CAREX X 'ICE DANCE'	ICE DANCE SEDGE	#1 POT	
DK	34	DRYOPTERIS 'AFRINE 'THE KING'	THE KING MALE FERN	#2 POT	
D&B	44	DRYOPTERIS 'BRYTHOSORA 'BRILLIANCE'	AUTUMN BRILLIANCE FERN	#2 POT	
EG	102	EUCONYMIUS FORTUNII 'EMERALD AND GOLD'	EMERALD AND GOLD WINTERCREEPER	#1 POT	
IF	48	POA 'YETEMAN MOUNTAIN'	SNOWS FERN	#2 POT	

NOTES: * PLANT SIZES IN THIS LIST ARE SPECIFIED ACCORDING TO THE BC LANDSCAPE STANDARD AND CANADIAN LANDSCAPE STANDARD, LATEST EDITION. CONTAINER SIZES SPECIFIED AS PER CMA STANDARD. BOTH PLANT SIZE AND CONTAINER SIZE ARE THE MINIMUM ACCEPTABLE SIZES. * REFER TO SPECIFICATIONS FOR DEFINED CONTAINER MEASUREMENTS AND OTHER PLANT MATERIAL REQUIREMENTS. * SEARCH AND REVIEW MAKE PLANT MATERIAL AVAILABLE FOR OPTIMAL REVIEW BY LANDSCAPE ARCHITECT AT SOURCE OF SUPPLY. AREA OF SEARCH TO INCLUDE LOWER MAINLAND AND FRASER VALLEY. * SUBSTITUTIONS OBTAIN WRITTEN APPROVAL FROM THE LANDSCAPE ARCHITECT PRIOR TO MAKING ANY SUBSTITUTIONS TO THE SPECIFIED MATERIAL. UNAPPROVED SUBSTITUTIONS WILL BE REJECTED. ALLOW A MINIMUM OF FIVE DAYS PRIOR TO DELIVERY FOR REQUEST TO SUBSTITUTE. SUBSTITUTIONS ARE SUBJECT TO BC LANDSCAPE STANDARD AND CANADIAN LANDSCAPE STANDARD, DEFINITION OF CONDITIONS OF AVAILABILITY. ALL LANDSCAPE MATERIAL AND WORKMANSHIP MUST MEET OR EXCEED BC LANDSCAPE STANDARD AND CANADIAN LANDSCAPE STANDARD LATEST EDITION. ALL PLANT MATERIAL MUST BE PROVIDED FROM CERTIFIED DISEASE FREE NURSERY.

PROPOSED TREES



CLIENT: KEystone ARCHITECTURE

4	21.03.05	REV: PRELIM COMMENTS	BL
3	21.02.25	REVISION REVISION	BL
2	21.04.15	REV: SITE PLAN	BL
1	21.07.19	REV: TO AMENITY AREA	BL
NO.	DATE	REVISION DESCRIPTION	DR.

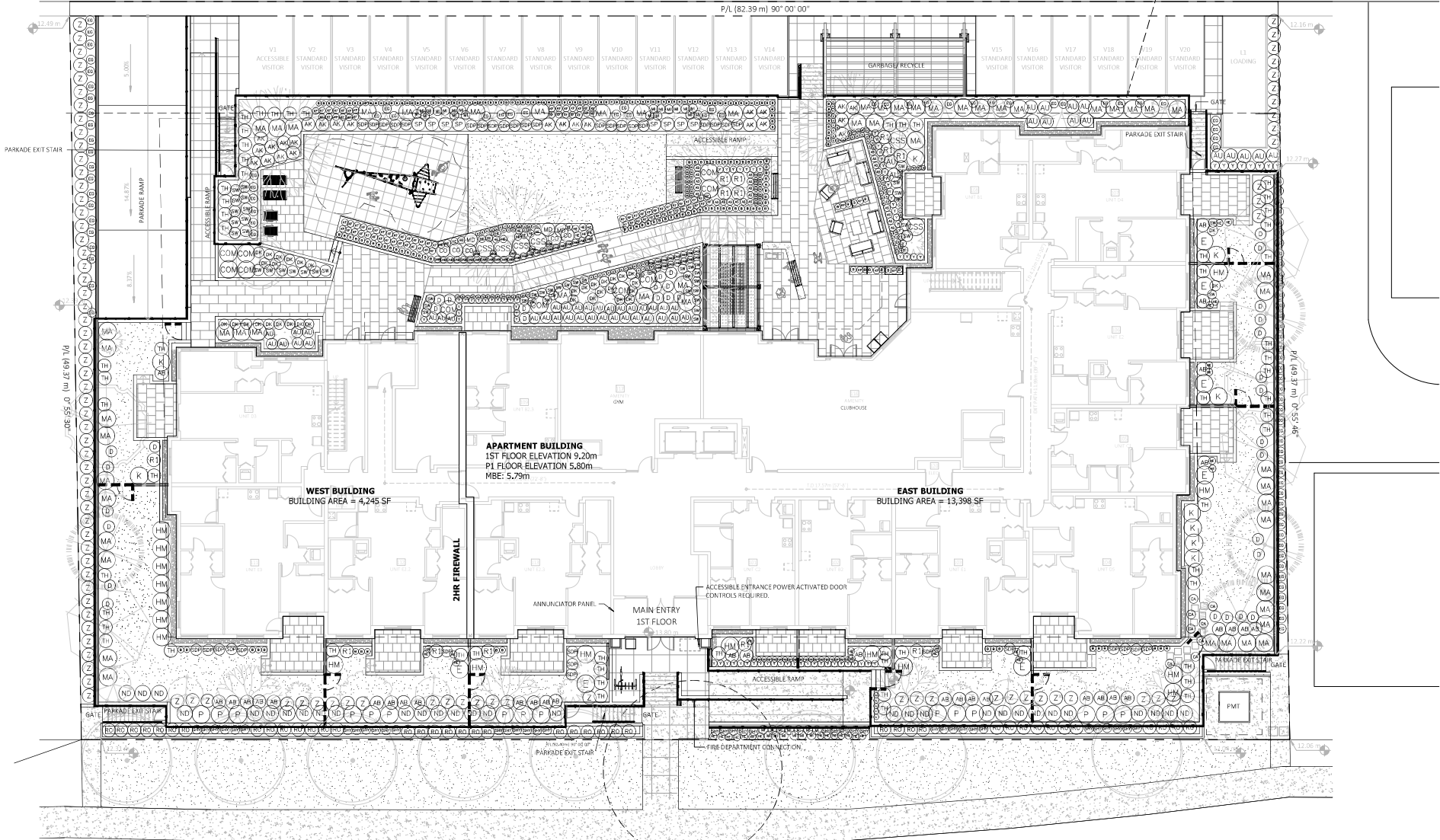
PROJECT: SAIYA APARTMENTS
 19701 - 19729 55A AVENUE
 LANGLEY, BC



DATE: 23 MAR 23
 SCALE: VARIOUS
 DRAWN: BJ
 DESIGN: BJ
 CHECKED: PCM
 DRAWING NUMBER: L1
 PMG PROJECT NUMBER: 21-056

LANE

P/L (82.39 m) 90° 00' 00"



CLIENT: **KEYSTONE ARCHITECTURE**

PROJECT: **SAIYA APARTMENTS**
19701 - 19729 55A AVENUE
LANGLEY, BC

SEAL:  DRAWING TITLE: **SHRUB PLANTING PLAN**

DATE: 23.MAR.25
SCALE: 1"=10'-0"
DRAWN: BJ
DESIGN: CHKD: PCM

DRAWING NUMBER: 21.01.01

© Copyright reserved. This drawing and design is the property of PMG Landscape Architects and may not be reproduced or used for other projects without their permission.

NO.	DATE	REVISION DESCRIPTION	DR.
4	21.12.05	REV: PRELIMINARY COMMENTS	BJ
3	21.02.25	DESIGN REVISION	BJ
2	21.04.15	REV: SITE PLAN	BJ
1	21.07.20	REV: TO ANNEXY AREA	BJ

L2 OF 3
PMG PROJECT NUMBER: 21-056

