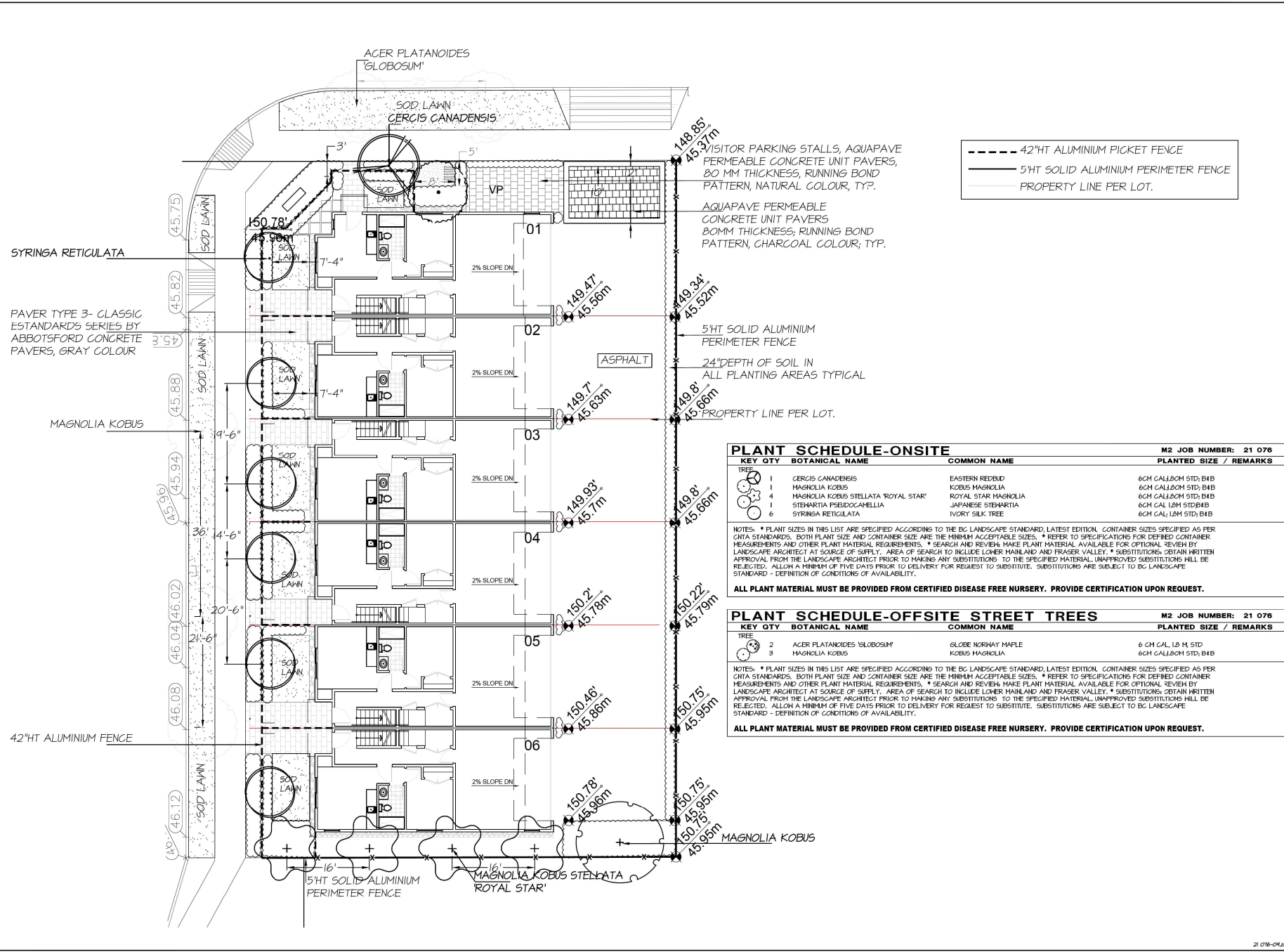




#220 - 26 Lorne Mews  
 New Westminster, British Columbia  
 V3M 3L7  
 Tel: 604.553.0044  
 Fax: 604.553.0045  
 Email: office@m2la.com



**PLANT SCHEDULE-ONSITE** M2 JOB NUMBER: 21 076

KEY	QTY	BOTANICAL NAME	COMMON NAME	PLANTED SIZE / REMARKS
TREE				
1	1	CERCIS CANADENSIS	EASTERN REDBUD	6CM CAL/8CM STD; B4B
2	1	MAGNOLIA KOBUS	KOBUS MAGNOLIA	6CM CAL/8CM STD; B4B
4	4	MAGNOLIA KOBUS STELLATA 'ROYAL STAR'	ROYAL STAR MAGNOLIA	6CM CAL/8CM STD; B4B
1	1	STEHARTIA PSEUDOCAMELLIA	JAPANESE STEHARTIA	6CM CAL; 12M STD; B4B
6	6	SYRINGA RETICULATA	IVORY SILK TREE	6CM CAL; 12M STD; B4B

NOTES: \* PLANT SIZES IN THIS LIST ARE SPECIFIED ACCORDING TO THE BC LANDSCAPE STANDARD, LATEST EDITION. CONTAINER SIZES SPECIFIED AS PER CNRA STANDARDS. BOTH PLANT SIZE AND CONTAINER SIZE ARE THE MINIMUM ACCEPTABLE SIZES. \* REFER TO SPECIFICATIONS FOR DEFINED CONTAINER MEASUREMENTS AND OTHER PLANT MATERIAL REQUIREMENTS. \* SEARCH AND REVIEW MAKE PLANT MATERIAL AVAILABLE FOR OPTIONAL REVIEW BY LANDSCAPE ARCHITECT AT SOURCE OF SUPPLY. AREA OF SEARCH TO INCLUDE LOWER MAINLAND AND FRASER VALLEY. \* SUBSTITUTIONS OBTAIN WRITTEN APPROVAL FROM THE LANDSCAPE ARCHITECT PRIOR TO MAKING ANY SUBSTITUTIONS TO THE SPECIFIED MATERIAL. UNAPPROVED SUBSTITUTIONS WILL BE REJECTED. ALLOW A MINIMUM OF FIVE DAYS PRIOR TO DELIVERY FOR REQUEST TO SUBSTITUTE. SUBSTITUTIONS ARE SUBJECT TO BC LANDSCAPE STANDARD - DEFINITION OF CONDITIONS OF AVAILABILITY.

**ALL PLANT MATERIAL MUST BE PROVIDED FROM CERTIFIED DISEASE FREE NURSERY. PROVIDE CERTIFICATION UPON REQUEST.**

**PLANT SCHEDULE-OFFSITE STREET TREES** M2 JOB NUMBER: 21 076

KEY	QTY	BOTANICAL NAME	COMMON NAME	PLANTED SIZE / REMARKS
TREE				
2	2	ACER PLATANOIDES 'GLOBOSUM'	GLOBE NORWAY MAPLE	6 CM CAL; 1.8 M STD
3	3	MAGNOLIA KOBUS	KOBUS MAGNOLIA	6CM CAL/8CM STD; B4B

NOTES: \* PLANT SIZES IN THIS LIST ARE SPECIFIED ACCORDING TO THE BC LANDSCAPE STANDARD, LATEST EDITION. CONTAINER SIZES SPECIFIED AS PER CNRA STANDARDS. BOTH PLANT SIZE AND CONTAINER SIZE ARE THE MINIMUM ACCEPTABLE SIZES. \* REFER TO SPECIFICATIONS FOR DEFINED CONTAINER MEASUREMENTS AND OTHER PLANT MATERIAL REQUIREMENTS. \* SEARCH AND REVIEW MAKE PLANT MATERIAL AVAILABLE FOR OPTIONAL REVIEW BY LANDSCAPE ARCHITECT AT SOURCE OF SUPPLY. AREA OF SEARCH TO INCLUDE LOWER MAINLAND AND FRASER VALLEY. \* SUBSTITUTIONS OBTAIN WRITTEN APPROVAL FROM THE LANDSCAPE ARCHITECT PRIOR TO MAKING ANY SUBSTITUTIONS TO THE SPECIFIED MATERIAL. UNAPPROVED SUBSTITUTIONS WILL BE REJECTED. ALLOW A MINIMUM OF FIVE DAYS PRIOR TO DELIVERY FOR REQUEST TO SUBSTITUTE. SUBSTITUTIONS ARE SUBJECT TO BC LANDSCAPE STANDARD - DEFINITION OF CONDITIONS OF AVAILABILITY.

**ALL PLANT MATERIAL MUST BE PROVIDED FROM CERTIFIED DISEASE FREE NURSERY. PROVIDE CERTIFICATION UPON REQUEST.**

NO.	DATE	REVISION DESCRIPTION	DR.
1			
2			
3			
4			
5			
6			
7			
8			
9			
10			
11			
12			
13			
14			
15			
16			
17			
18			
19			
20			
21			
22			
23			
24			
25			
26			
27			
28			
29			
30			
31			
32			
33			
34			
35			
36			
37			
38			
39			
40			
41			
42			
43			
44			
45			
46			
47			
48			
49			
50			
51			
52			
53			
54			
55			
56			
57			
58			
59			
60			
61			
62			
63			
64			
65			
66			
67			
68			
69			
70			
71			
72			
73			
74			
75			
76			
77			
78			
79			
80			
81			
82			
83			
84			
85			
86			
87			
88			
89			
90			
91			
92			
93			
94			
95			
96			
97			
98			
99			
100			

PROJECT: 20816 45A AVENUE, CITY OF LANGLEY, BC

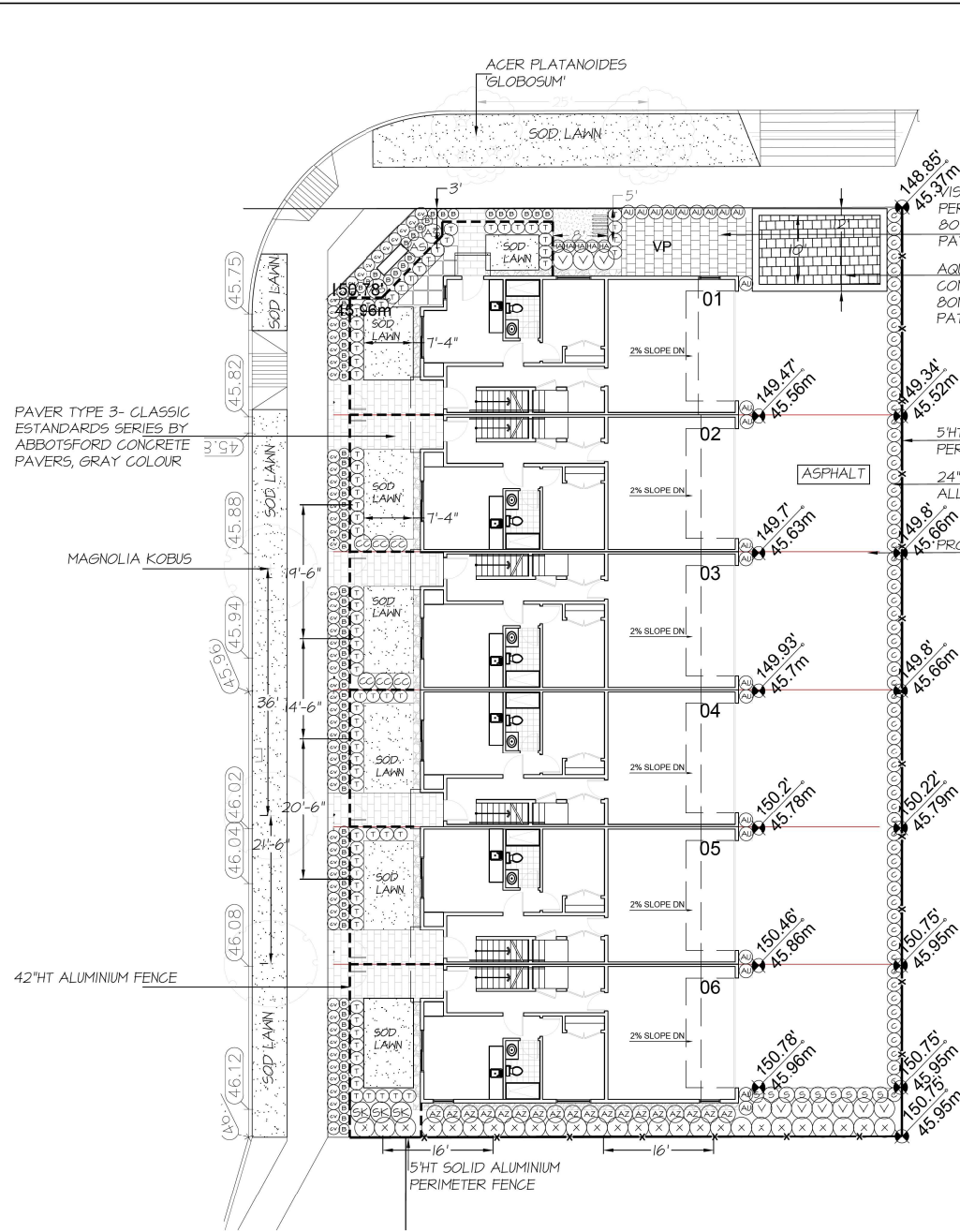
DRAWING TITLE: TREE PLAN

DATE: NOV 01 2021 DRAWING NUMBER:  
 SCALE: 1/8" = 1'-0"  
 DRAWN: EN  
 DESIGN: EN  
 CHK'D: MTLM  
 M2LA PROJECT NUMBER: 21-076

L1



#220 - 26 Lorne Mews  
New Westminster, British Columbia  
V3M 3L7  
Tel: 604.553.0044  
Fax: 604.553.0045  
Email: office@m2la.com



VISITOR PARKING STALLS, AQUAPAVE PERMEABLE CONCRETE UNIT PAVERS, 80 MM THICKNESS, RUNNING BOND PATTERN, NATURAL COLOUR, TYP.

AQUAPAVE PERMEABLE CONCRETE UNIT PAVERS 80MM THICKNESS; RUNNING BOND PATTERN, CHARCOAL COLOUR; TYP.

5'HT SOLID ALUMINIUM PERIMETER FENCE  
24" DEPTH OF SOIL IN ALL PLANTING AREAS TYPICAL

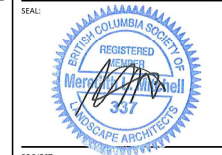
**PLANT SCHEDULE-SHRUBS**

KEY	QTY	BOTANICAL NAME	COMMON NAME	PLANTED SIZE / REMARKS
10		AZALEA JAPONICA 'HINO GRIMSON'	AZALEA; SINGLE DEEP GRIMSON	#2 POT; 25CM
82		BUXUS MICROPHYLLA 'WINTER GEM'	LITTLE-LEAF BOX	#2 POT; 25CM
26		CHOISYA TERNATA 'SUNDANCE'	MEXICAN HOOK ORANGE	#2 POT; 40CM
6		CORNUS ALBA 'ELEGANTISSIMA'	VARIEGATED SHRUB DOGWOOD	#2 POT
22		ELIONYMUS FORTUNEI 'COLORATUS'	WINTER CREEPER	#2 POT; 30CM
65		FRAXINUS LISITANICA	PORTUGUESE LAUREL	#3 POT; 60CM
4		SARCOCOGCA HOOKERIANA 'RUSCIFOLIA'	FRAGRANT SARCOCOGCA	#3 POT; 40CM
3		SKIMMIA JAPONICA (DOB MALE)	JAPANESE SKIMMIA	#2 POT; 30CM
3		SKIMMIA JAPONICA (DOB MALE)	JAPANESE SKIMMIA	#2 POT; 30CM
16		TAXUS X MEDIA 'HICKSII'	HICKS' YEW	# 5 POT
10		VIBURNUM DAVIDII	DAVID'S VIBURNUM	#3 POT
60		CALLUNA VULGARIS 'DARK BEAUTY'	HEATHER; PINK	#1 POT
5		PACYSANDRA TERMINALIS	JAPANESE SPURGE	#1 POT; 18CM

NOTES: \* PLANT SIZES IN THIS LIST ARE SPECIFIED ACCORDING TO THE BC LANDSCAPE STANDARD, LATEST EDITION. CONTAINER SIZES SPECIFIED AS PER CANA STANDARDS. BOTH PLANT SIZE AND CONTAINER SIZE ARE THE MINIMUM ACCEPTABLE SIZES. \* REFER TO SPECIFICATIONS FOR DEFINED CONTAINER MEASUREMENTS AND OTHER PLANT MATERIAL REQUIREMENTS. \* SEARCH AND REVIEW MAKE PLANT MATERIAL AVAILABLE FOR OPTIONAL REVIEW BY LANDSCAPE ARCHITECT AT SOURCE OF SUPPLY. AREA OF SEARCH TO INCLUDE LOWER MAINLAND AND FRASER VALLEY. \* SUBSTITUTIONS OBTAIN WRITTEN APPROVAL FROM THE LANDSCAPE ARCHITECT PRIOR TO MAKING ANY SUBSTITUTIONS. TO THE SPECIFIED MATERIAL. UNAPPROVED SUBSTITUTIONS WILL BE REJECTED. ALLOW A MINIMUM OF FIVE DAYS PRIOR TO DELIVERY FOR REQUEST TO SUBSTITUTE. SUBSTITUTIONS ARE SUBJECT TO BC LANDSCAPE STANDARD - DEFINITION OF CONDITIONS OF AVAILABILITY.

**ALL PLANT MATERIAL MUST BE PROVIDED FROM CERTIFIED DISEASE FREE NURSERY. PROVIDE CERTIFICATION UPON REQUEST.**

NO.	DATE	REVISION DESCRIPTION	DR.
1			
2			
3			
4			
5			
6			
7			
8			
9			
10			



PROJECT:  
**20816 45A AVENUE, CITY OF LANGLEY, BC**

DRAWING TITLE: <b>SHRUB PLAN</b>	
DATE: NOV 01, 2021	DRAWING NUMBER:
SCALE: 1/8" = 1'-0"	<b>L2</b>
DRAWN: EN	
DESIGN: EN	
CHK'D: MFLM	
M2LA PROJECT NUMBER: 21 076-044P	21-076



