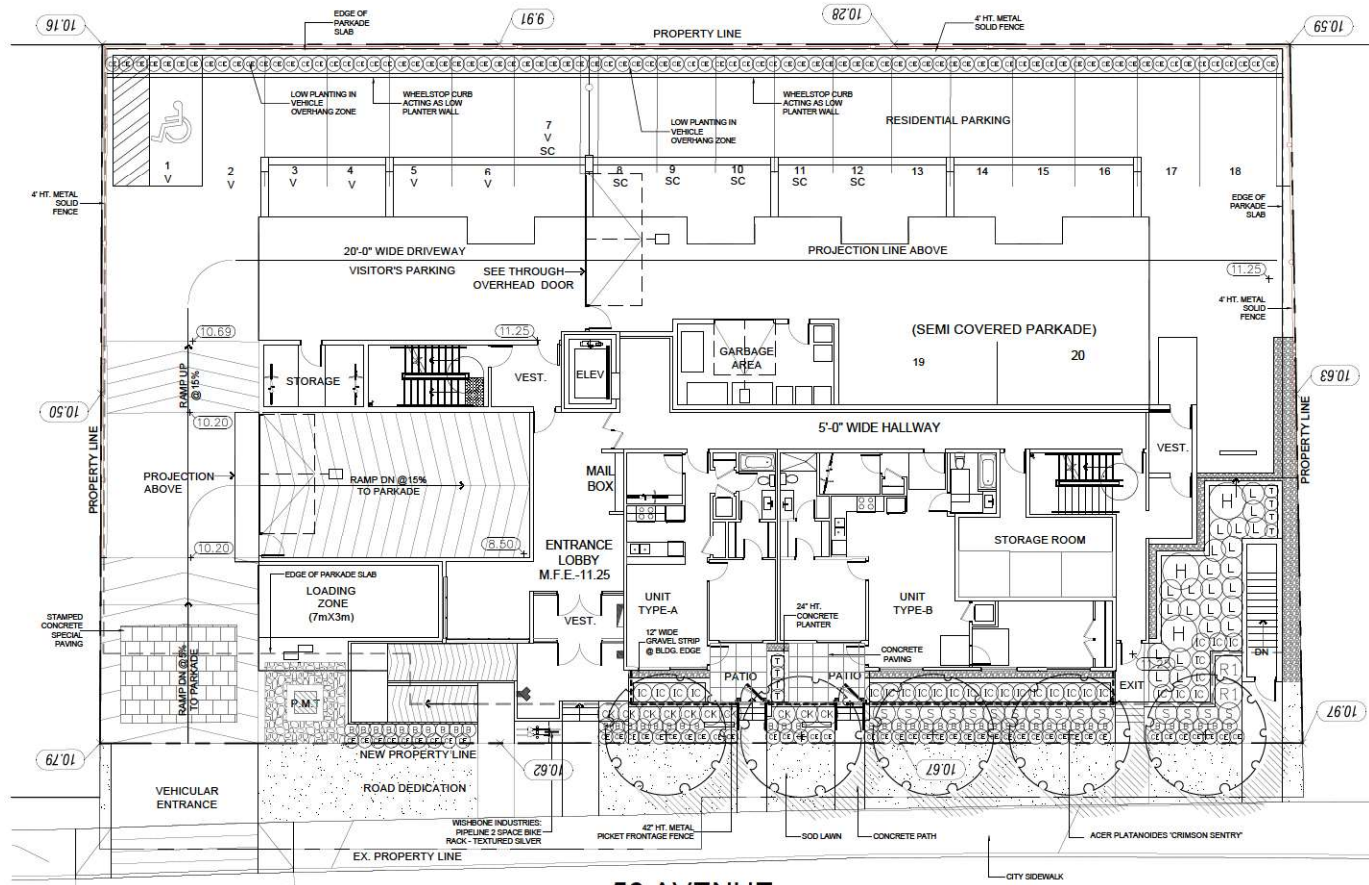


SEAL:



PLANT SCHEDULE				PMG PROJECT NUMBER: 21-170
KEY	QTY	BOTANICAL NAME	COMMON NAME	PLANTED SIZE / REMARKS
5	5	ACER PLATANOIDES 'CRIMSON SENTRY'	COLUMNAR CRIMSON SENTRY MAPLE	60CM CAL; 2M STD; BAB
45	45	BUXUS MICROPHYLLA 'WINTER GEM'	LITTLE-LEAF BOX	#2 POT; 25CM
3	3	HYDRANGEA PANICULATA 'WIMS RED'	PIRE & ICE PEEGEE HYDRANGEA	#3 POT; 80CM
27	27	ILEX ORENATA 'GREEN THUMB'	HOLLY; COMPACT	#3 POT; 50CM
2	2	RHOXODENDRON 'CHRISTMAS CHEER'	RHOXODENDRON; BLUSH PINK	#3 POT; 50CM
15	15	SPIRAEA ARGUTA COMPACTA	DWARF GARLAND SPIRAEA	#2 POT; 40CM
8	8	TAXUS X MEDIA 'H.M. EDDIE'	EDDIE'S YEW	1.5M BAB
10	10	CALAMAGROSTIS ACUTIFLORA 'KARL FOERSTER'	FEATHER REED GRASS	#1 POT
135	135	CAREX OSHIMENSIS 'EVEREST'	EVEREST JAPANESE SEDGE	#1 POT
23	23	LONICERA PILEATA	PRIVET HONEYSUCKLE	#1 POT; 25CM

NOTES: \* PLANT SIZES IN THIS LIST ARE SPECIFIED ACCORDING TO THE BC LANDSCAPE STANDARD AND CANADIAN LANDSCAPE STANDARD, LATEST EDITION. CONTAINER SIZES SPECIFIED AS PER ONLA STANDARD. BOTH PLANT SIZE AND CONTAINER SIZE ARE THE MINIMUM ACCEPTABLE SIZES. \* REFER TO SPECIFICATIONS FOR DEFINED CONTAINER MEASUREMENTS AND OTHER PLANT MATERIAL REQUIREMENTS. \* SEARCH AND REVIEW: MAKE PLANT MATERIAL AVAILABLE FOR OPTIONAL REVIEW BY LANDSCAPE ARCHITECT AT SOURCE OF SUPPLY. AREA OF SEARCH TO INCLUDE LOWER MAINLAND AND FRASER VALLEY. \* SUBSTITUTIONS: OBTAIN WRITTEN APPROVAL FROM THE LANDSCAPE ARCHITECT PRIOR TO MAKING ANY SUBSTITUTIONS TO THE SPECIFIED MATERIAL. UNAPPROVED SUBSTITUTIONS WILL BE REJECTED. ALLOW A MINIMUM OF FIVE DAYS PRIOR TO DELIVERY FOR REQUEST TO SUBSTITUTE. SUBSTITUTIONS ARE SUBJECT TO BC LANDSCAPE STANDARD AND CANADIAN LANDSCAPE STANDARD. DEFINITION OF CONDITIONS OF AVAILABILITY. ALL LANDSCAPE MATERIAL AND WORKMANSHIP MUST MEET OR EXCEED BC LANDSCAPE STANDARD AND CANADIAN LANDSCAPE STANDARD LATEST EDITION. ALL PLANT MATERIAL MUST BE PROVIDED FROM CERTIFIED DISEASE FREE NURSERY.



56 AVENUE

0 5' 10' 20' 30' 50'



4	22.FEB.03	UPDATE FENCE DETAIL - REDRAWING	CLB
7	22.FEB.03	UPDATE FOR ASP COMMENTS	CLB
2	25.JAN.25	PLANTED VEHICLE OVERHANG ZONE DETAIL	CLB
1	22.JAN.10	ASP MEETING	JB

NO. DATE REVISION DESCRIPTION DR.

CLIENT:

PROJECT:

**MULTI FAMILY  
DEVELOPMENT**

56 AVENUE  
LANGLEY, B.C.

DRAWING TITLE:

**GROUND FLOOR  
LANDSCAPE PLAN**

DATE: 21.07.06 DRAWING NUMBER:

SCALE: 1/8"=1'-0"

DRAWN: MM

DESIGN: MM

CHK'D: MCY

**L1**

OF 3

21170-5.2P

PMG PROJECT NUMBER:

21-170

SEAL:



CEDAR SHED INDUSTRIES:  
6'X3' LEAN TO SHED



CEDAR SHED INDUSTRIES -  
CEDAR POTTING BENCH



BARKMAN 24'X24' PAVERS - FJORD INN GLACIER



LIFESPACE PERENNIAL,  
3'X3' ELEVATED SELF-WATERING PLANTER



WISHBONE INDUSTRIES JEM LOUNGE CHAIR. NORDIC LICHEN & GREY  
COLOURED SLATS



CORNILLEAU,  
PRO 510M CROSSOVER OUTDOOR TABLE



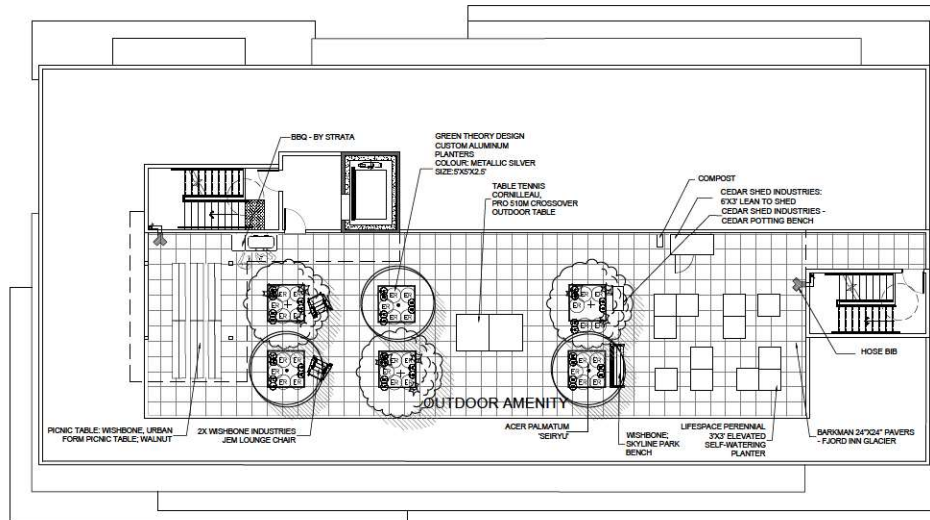
WISHBONE,  
URBAN FORM PICNIC TABLE, WALNUT



WISHBONE,  
SKYLINE PARK BENCH



GREEN THEORY DESIGN,  
5'X5'X2.5' LOW BOX ALUMINUM PLANTER



### ROOFTOP PLANT SCHEDULE

KEY	QTY	BOTANICAL NAME	COMMON NAME	PLANTED SIZE / REMARKS
TREE	3	ACER PALMATUM 'SEIRYU'	SEIRYU JAPANESE MAPLE	B&B, 1.5M
PERENNIAL	36	MALUS 'RED JEWEL'	RED JEWEL FLOWERING CRABAPPLE	SCM CAL; 1.5M STD; B&B
GC	30	HEMEROCALLIS 'WHITE TEMPTATION'	DAYLILY: WHITE	#1 POT: 20CM
	30	ERICA CARNEA 'SPRINGWOOD WHITE'	WINTER HEATH: WHITE	#1 POT

NOTES: \* PLANT SIZES IN THIS LIST ARE SPECIFIED ACCORDING TO THE BC LANDSCAPE STANDARD AND CANADIAN LANDSCAPE STANDARD, LATEST EDITION. \* CONTAINER SIZES SPECIFIED AS PER ONA STANDARD. \* BOTH PLANT SIZE AND CONTAINER SIZE ARE THE MINIMUM ACCEPTABLE SIZES. \* REFER TO SPECIFICATIONS FOR DEFINED CONTAINER MEASUREMENTS AND OTHER PLANT MATERIAL REQUIREMENTS. \* SEARCH AND REVIEW MAJOR PLANT MATERIAL AVAILABLE FOR OPTIONAL REVIEW BY LANDSCAPE ARCHITECT AT SOURCE OF SUPPLY. \* AREA OF SEARCH TO INCLUDE LOWER MAINLAND AND FRASER VALLEY. \* SUBSTITUTIONS: OBTAIN WRITTEN APPROVAL FROM THE LANDSCAPE ARCHITECT PRIOR TO MAKING ANY SUBSTITUTIONS TO THE SPECIFIED MATERIAL. UNAPPROVED SUBSTITUTIONS WILL BE REJECTED. ALLOW A MINIMUM OF FIVE DAYS PRIOR TO DELIVERY FOR REQUEST TO SUBSTITUTE. SUBSTITUTIONS ARE SUBJECT TO BC LANDSCAPE STANDARD AND CANADIAN LANDSCAPE STANDARD - DEFINITION OF CONDITIONS OF AVAILABILITY. \* ALL LANDSCAPE MATERIAL AND WORKMANSHIP MUST MEET OR EXCEED BC LANDSCAPE STANDARD AND CANADIAN LANDSCAPE STANDARD LATEST EDITION. \* ALL PLANT MATERIAL MUST BE PROVIDED FROM CERTIFIED DISEASE FREE NURSERY. \* BIO-SOLIDS NOT PERMITTED IN GROWING MEDIUM UNLESS AUTHORIZED BY LANDSCAPE ARCHITECT.

1	22.FEB.23	UPDATE FOR ACP COMMENTS	CLB
2	22.FEB.23	UPDATE FOR ACP COMMENTS	CLB
3	22.JAN.23	PLANTED VEHICLE OVERHANG ZONE SWITCH	CLB
4	22.JAN.23	ACP MEETING	CLB

NO. DATE REVISION DESCRIPTION DR.

CLIENT:

PROJECT:

**MULTI FAMILY  
DEVELOPMENT**

**56 AVENUE  
LANGLEY, B.C.**

DRAWING TITLE:  
**ROOF DECK  
LANDSCAPE PLAN**

DATE: 21.OCT.07  
SCALE: 1/8"=1'-0"  
DRAWN: MM  
DESIGN: MM  
CHK'D: MCY

**L2**

OF 3

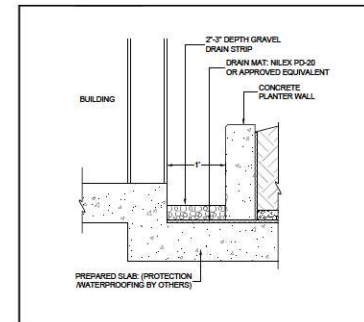
PMG PROJECT NUMBER: 21-170

0 5' 10' 20' 30' 50'

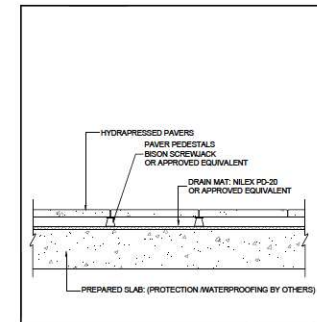


21170-5.2P

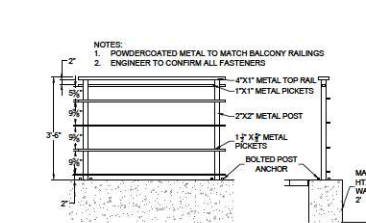
SEAL:



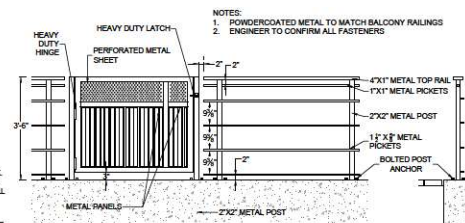
**1 DRAIN ROCK STRIP AT BUILDING ON SLAB**  
1'-0"



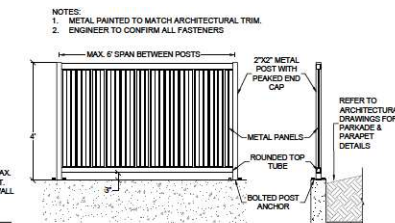
**2 HYDRAPRESSED PAVERS ON SLAB**  
1'-1'-0"



**3 3' HT. METAL PICKET FRONTAGE FENCE**  
1/2" x 1'-0"



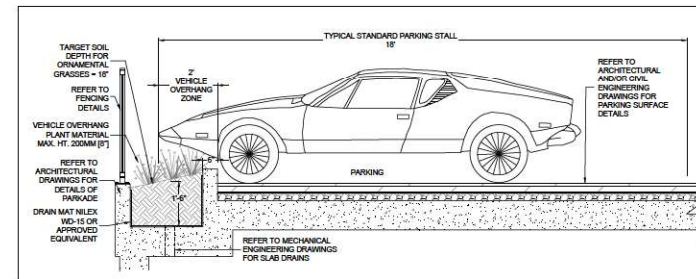
**4 3' HT. METAL PICKET FRONTAGE FENCE GATE**  
1/2"=1'-0" ADJACENT GATE AT GRADE



5 3' HT. METAL SOLID FENCING  
1/2"=1'-0"



WISHBONE INDUSTRIES: PIPELINE 2 SPACE BIKE  
RACK - TEXTURED SILVER



**6** **PARKING W/PLANTED WHEELSTOP OVERHANG TYP.**  
1/2" = 1'-0"

4	22.FEB.03	UPDATE FENCE DETAIL - RESUBMISSION	CLO
3	22.FEB.01	UPDATE PER ADP COMMENTS	CLO
2	22.JAN.26	PLANTED VEHICLE OVERHANG ZONE SKETCH	CLO
1	22.JAN.10	ADP MEETING	JR
<b>NO.</b>	<b>DATE</b>	<b>REVISION DESCRIPTION</b>	<b>DR.</b>

CLIENT:

**PROJECT:**

## MULTI FAMILY DEVELOPMENT

56 AVENUE  
LANGLEY, B.C.

DRAWING TITLE:

**LANDSCAPE  
DETAILS**

DATE: 21.OCT.06 DRAWING NUMBER:  
SCALE: AS NOTED  
DRAWN: MM **L3**  
DESIGN: MM  
CHK'D: MCY OF 3

### L3

OF 3