



DATE	REVISIONS	NO.
mar/22	odp comments	3
jan/22	revised site plan	2
aug/21	revised site plan	1

C. KAVOLINAS & ASSOCIATES INC.
 BCSLA CSIA
 2462 JONQUIL COURT
 4880 FORD, B.C.
 V3G 3E8
 PHONE (604) 857-2376

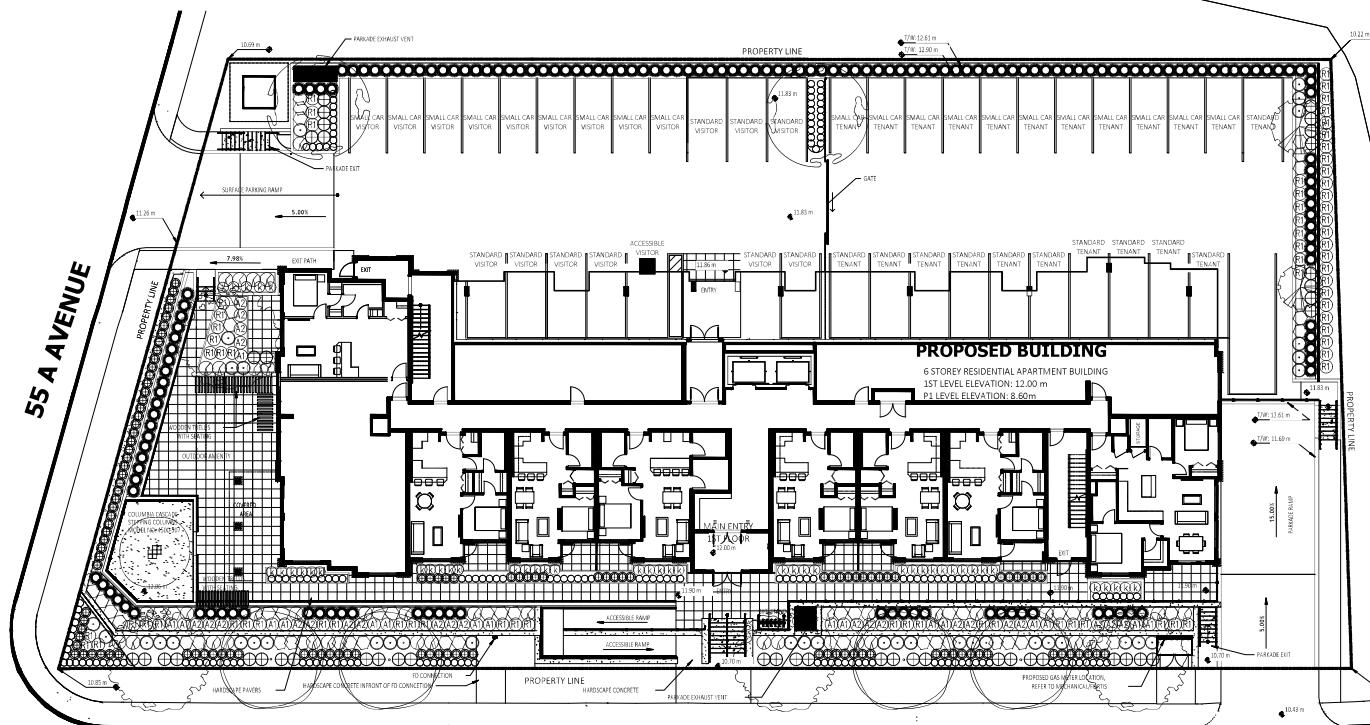
CLIENT
 1292533 BC LTD.
 ATTENTION: TIM KRÖCKER
 SUITE #210
 11590 GAMBE ROAD
 RICHMOND, B.C.
 V6X 3S2

TITLE
 PLAN VIEW
LANDSCAPE PLAN
BRYDON CRESCENT
APTS LANGLEY (RKD)
 19880 53A AVENUE
 5494 5000 5210 BRYDON CRESCENT
 LANGLEY, B.C.

SCALE	DATE
1:150	AUG/21
DRAWN	DHW
CHKD	DHW
APPROV	AS BUILT

PRINTED	JOB NO.
	DRAWING NO.

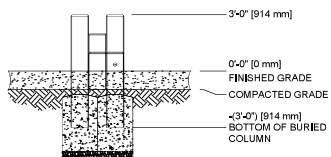
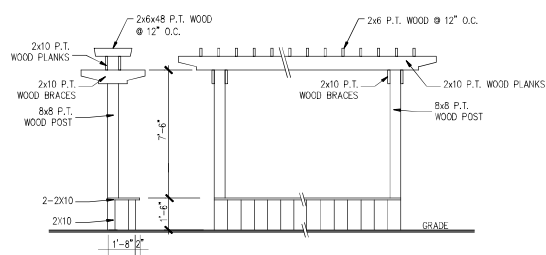
L-1



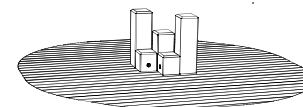
BRYDON CRESCENT

COLUMBIA CASCADE
 STEPPING COLUMNS
 MODEL NO. 4500-507

WOOD TRELLIS W/BENCH



FRONT VIEW



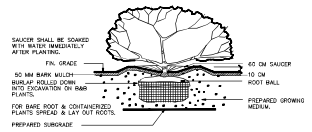
ISOMETRIC VIEW

		PLANT LIST				
KEY	BOTANICAL NAME	COMMON NAME	QTY.	SIZE	SPACING	REMARKS
	ACER CAMPESTRE 'RED SHINE'	RED SHINE MAPLE	2	5 CM. CAL.	AS SHOWN	B. & B.
	PRUNUS YEDOENSIS 'AKERONO'	DAYBREAK CHERRY	1	5 CM. CAL.	AS SHOWN	B. & B.
	CORNUS FLORIDA 'RUBRUM'	RED FLOWERING DOGWOOD	4	5 CM. CAL.	AS SHOWN	B. & B.
	ACER PALMATUM 'BLOODGOOD'	BLOODGOOD JAP. MAPLE	4	3.00 METERS	AS SHOWN	B. & B.
⊕	AZALEA JAPONICA 'HINO CRIMSON'	CRIMSON AZALEA	41	#3 POT	90 CM. O.C.	
⊕	AZALEA NORTHERN LIGHTS 'MANDARIN LIGHTS'	NORTHERN LIGHTS AZALEA	17	#3 POT	90 CM. O.C.	
⊕	AZALEA JAPONICA (VARIOUS)	JAPANESE AZALEA	24	#3 POT	90 CM. O.C.	
○	ABELIA 'EDWARD GOWCHER'	EDWARD GOUCHER ABELIA	45	#3 POT	90 CM. O.C.	
○	BUXUS MACROPHYLLA 'WINTER GEM'	ASIAN BOXWOOD	151	#3 POT	45 CM. O.C.	
○	HYDRANGEA MACROPHYLLA 'NIKKO BLUE'	HYDRANGEA	31	#3 POT	90 CM. O.C.	
⊕	MEDIUM RHODODENDRON (VARIOUS)	RHODODENDRON	62	#3 POT	90 CM. O.C.	
⊕	CALAMAGROSTIS ACUTIFLORA 'KARL FOERSTER'	FEATHER REED GRASS	48	#3 POT	65 CM. O.C.	
⊕	SYRINGA VULGARIS 'MICHEL BUCHNER'	LILAC	30	#3 POT	90 CM. O.C.	
⊕	PRUNUS LAUROCERASUS 'OTTO LUYKEN'	OTTO LUYKEN LAUREL	115	#3 POT	70 CM. O.C.	
⊕	THUJA OCCIDENTALIS 'SMARAGD'	EMERALD ARBORVITAE	167	1.50 METERS	70 CM. O.C.	

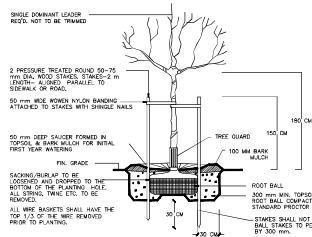


NOTES / GENERAL

- PLANT SIZES IN THIS LIST ARE SPECIFIED ACCORDING TO BC LANDSCAPE STANDARD "LATEST EDITION". CONTAINER SIZES ARE SPECIFIED AS PER "DATA STANDARDS" BOTH PLANT SIZE AND CONTAINER SIZE ARE THE MINIMUM ACCEPTABLE SIZES. SEARCH AND FINDER NAME PLANT MATERIAL AVAILABLE FOR OPTIONAL REVIEW BY "LANDSCAPE ARCHITECT" AT SOURCE OF SUPPLY. AREA OF SEARCH TO INCLUDE LOWER MAINLAND AND FRASER VALLEY. "SUBSTITUTIONS" MUST OBTAIN WRITTEN APPROVAL FROM THE "LANDSCAPE ARCHITECT" PRIOR TO MAKING ANY. SUBSTITUTIONS TO SPECIFIED MATERIAL. UNAPPROVED SUBSTITUTIONS WILL BE REJECTED. ALLOW A MINIMUM OF 10 WORKING DAYS PRIOR TO DELIVERY FOR REQUEST TO SUBSTITUTE. SUBSTITUTIONS ARE SUBJECT TO "L.C. LANDSCAPE STANDARDS"
- ALL PLANT MATERIAL MUST BE PROVIDED FROM CERTIFIED "DISEASE FREE" NURSERY. ALL PLANT MATERIAL MUST CONFORM TO THE LATEST EDITION OF THE "BC LANDSCAPE STANDARD". PROMOTE CERTIFICATION FROM REDUCES ALL LANDSCAPING AND LANDSCAPE MATERIALS TO CONFORM TO THE LATEST EDITION OF THE B.C. LANDSCAPE STANDARDS
- MIN. DRAINING MEDIUM DEPTHS OVER PREPARED SUBSTRATE SHALL BE :
LAWN AREAS 300 mm
GROUND COVER AREAS 400 mm
SHRUB AREAS 400 mm
TREE PITS 300 mm AROUND ROOT BALL
- GROWING MEDIUM SHALL HAVE PHYSICAL AND CHEMICAL PROPERTIES AS DESCRIBED IN THE STANDARDS FOR LEVEL 1 AND LEVEL 3 AREAS, EXCEPT FOR AREAS OVER STRUCTURES WHERE THE MEDIUM SHALL CONFORM TO THE REQUIREMENTS FOR LEVEL 1 APPLICATIONS. PROCESSING AND MIXING OF GROWING MEDIUM COMPONENTS SHALL BE DONE OFF-SITE USING A MECHANIZED SPREADING PROCESS. PROPOSED GROWING MEDIUM SHALL BE TESTED BY A RECOGNIZED LABORATORY. THE CONTRACTOR SHALL GUARANTEE THAT THE SOIL SUBMITTED FOR TESTING IS A REPRESENTATIVE SAMPLE TAKEN FROM THE SOIL THAT WILL BE USED AT THE SITE.
- ON-SITE OR IMPORTED SOILS SHALL SATISFY THE REQUIREMENTS OF THE STANDARDS FOR GROWING MEDIUM. SOILS SHALL BE VIRTUALLY FREE FROM SUBSOIL, WOOD INCL, WOODY PLANT PARTS, WEED OR SEMIWEED SEEDS, OR WEEDS PLANT PATHOGENS, OREGANUMS, TOXIC MATERIALS, STONES OVER 30 MM AND FOREIGN OBJECTS.
- ALL PLANTING PITS SHALL RECEIVE MIN. 50 MM BARK MULCH.
- PLANT SPECIES AND VARIETIES MAY NOT BE SUBSTITUTED WITHOUT THE APPROVAL OF THE LANDSCAPE ARCHITECT.
- THE CONTRACTOR SHALL GUARANTEE ALL MATERIALS AND WORKMANSHIP FOR A PERIOD OF ONE (1) FULL YEAR FROM THE DATE OF FINAL ACCEPTANCE, UNLESS OTHERWISE SPECIFIED. ALL PLANT MATERIALS AND SUPPLIES, OR IN POOR CONDITION DURING THE GUARANTEE PERIOD SHALL BE REPLACED BY THE CONTRACTOR AT NO EXTRA COST TO THE OWNER.
- THE CONTRACTOR SHALL CLEAR AWAY FROM THE SITE ALL RUBBERIES AS IT ACCUMULATES, AND SHALL, BY THE COMPLETION OF THE WORK, LEAVE THE WORK AND THE SITE THEREOF IN A CLEAN AND PRESENTABLE CONDITION, FREE FROM ALL OBSTRUCTIONS.



PLANTING DETAIL - SHRUBS & GRD. COVER PLANTS
SECTION N.T.S.



TREE PLANTING DETAIL
SECTION N.T.S.



DATE	REVISIONS	NO.
mar/22	odp comments	3
jan/22	revised site plan	2
may/21	revised site plan	1

C.KAVOLINAS & ASSOCIATES INC.
BCSA CSA
2482 JONHILL COURT
ABERFORD, B.C.
V3G 3E8
PHONE (604) 857-2376

CLIENT
1292533 BC LTD.
ATTENTION: TIM HROCHER
SUITE #210
11590 CAMBIE ROAD
RICHMOND, B.C.
V6V 1Z5

TITLE
PLAN VIEW
LANDSCAPE DETAILS
BRYDON CRESCENT
APTS LANGLEY (RKDI)
19890 53A AVENUE
5404 5000 5010 BRYDON CRESCENT
LANGLEY, B.C.

SCALE	DATE
N.T.S.	AUG/21
DWG	DWG
CHK	DWG
APPROV	AS NOTED

PRINTED	JOB No.
	DRIVING No.
	L-1A