



sheet schedule

SD0.01	COVER PAGE	SD2.01	SITE PLAN	SD3.01	BUILDING ELEVATIONS	SD3.16	RENDERED PERSPECTIVES
SD1.01	CONTEXT PLANS	SD2.10	1ST LEVEL PLAN	SD3.02	BUILDING ELEVATIONS	SD4.01	MATERIAL BOARD
SD1.02	CONTEXT PLANS	SD2.11	2ND LEVEL PLAN	SD3.03	BUILDING ELEVATIONS	SD5.01	STREETSCAPES
SD1.10	PROJECT DATA	SD2.12	3RD-7TH LEVEL PLAN	SD3.04	BUILDING ELEVATIONS	SD5.10	SHADOW STUDY
SD1.11	PROJECT DATA	SD2.13	8TH LEVEL PLAN	SD3.05	BUILDING ELEVATIONS	SD6.01	SITE SECTION
SD1.12	PROJECT DATA	SD2.14	9TH LEVEL PLAN	SD3.06	BUILDING ELEVATIONS	SD6.02	SITE SECTION
SD1.13	PROJECT DATA	SD2.15	10TH LEVEL PLAN	SD3.07	BUILDING ELEVATIONS	SD6.10	ENLARGED SECTIONS
SD1.14	FSR PLANS	SD2.16	11TH LEVEL PLAN	SD3.10	RENDERED ELEVATIONS	SD7.02	SITE LAYOUT PLAN
SD1.15	FSR PLANS	SD2.17	12TH LEVEL PLAN	SD3.11	RENDERED ELEVATIONS	SD7.03	SITE CODE PLAN
SD1.16	FSR PLANS	SD2.18	ROOF LEVEL PLAN	SD3.14	RENDERED PERSPECTIVES		
SD1.17	FSR PLANS	SD2.19	P2 LEVEL PLAN	SD3.15	RENDERED PERSPECTIVES		
SD1.18	FSR PLANS	SD2.20	P1 LEVEL PLAN				
SD1.20	DESIGN RATIONALE						

Whitetail homes ltd.

T (604)-864-0714 | #104 - 3550 Mt. Lehman Rd.  
Abbotsford, B.C., V4X 2M9



keystone architecture & planning ltd.

T 604.850.0577 | 300 - 33131 south fraser way  
F 1.855.398.4578 | abbotsford, bc v2s 2b1  
T 587.391.4768 | 410 - 333 11th avenue sw  
calgary, ab t2r 1t9  
e-mail: mail@keystonearch.ca  
website: keystonearch.ca



**WHITETAIL 204 STREET APARTMENTS**  
5360 - 204 STREET, LANGLEY, BC

**COVER PAGE**  
SCALE: N.T.S.

**RE-ISSUED FOR DEVELOPMENT PERMIT**

23/05/29 REVISION #:  
CITY OF LANGLEY FILE #  
PROJECT NUMBER: 21172.1



SD0.01



1) 204 st. looking east



2) 204 st. looking north east



3) intersection 53 ave. x 204 st.



4) 204 st. looking south east



5) intersection 54 ave. x 204 st.



location map



aerial view looking north east



**0.1.0 project data**

<b>PROJECT:</b>	WHITETAIL 204 STREET APARTMENTS (RESIDENTIAL)
<b>PROPOSED ZONING:</b>	CD
<b>CIVIC ADDRESS:</b>	5360 - 204 STREET, LANGLEY, BC
<b>LEGAL DESCRIPTION:</b>	LOT 178 DISTRICT LOT 36 GROUP 2, NEW WESTMINSTER DISTRICT PLAN 53282
<b>VARIANCES APPLIED FOR:</b>	
<b>BYLAW EXEMPTIONS:</b>	- EAVES AND GUTTERS, CORNICES, SILLS, BAY WINDOWS, SUN SHADES, CHIMNEYS, STEPS OR OTHER SIMILAR FEATURES PROVIDED THAT SUCH PROJECTIONS DO NOT EXCEED 1.0m (3.25 ft) - STEPS, ABORS AND TRELISSES, FISH PONDS, ORNAMENTS, FLAG POLES OR SIMILAR LANDSCAPING FEATURES, UNCOVERED PATIOS OR TERRACES. - SWIMMING POOLS SHALL NOT PROJECT INTO THE FRONT YARD SETBACK AREAS.
<b>BUILDING AREA DEFINITION (BCBC 2018):</b>	THE GREATEST HORIZONTAL AREA OF A BUILDING ABOVE GRADE WITHIN THE OUTSIDE SURFACE OF EXTERIOR WALLS OR WITHIN THE OUTSIDE SURFACE OF EXTERIOR WALLS AND THE CENTER-LINE OF FIREWALLS
<b>FSR DEFINITION (ZONING):</b>	THE FIGURE OBTAINED WHEN THE AREA OF ALL THE FLOORS OF THE BUILDING CONSTRUCTED OR PROPOSED TO BE CONSTRUCTED ON A LOT IS DIVIDED BY THE AREA OF THE LOT
<b>GROSS FLOOR AREA DEFINITION (ZONING):</b>	THE AREA OF THE FLOOR ENCLOSED BY THE OUTSIDE EDGE OF THE EXTERIOR WALLS OF A BUILDING, INCLUDING STAIRWAYS, ELEVATOR SHAFTS, STORAGE ROOMS AND MECHANICAL ROOMS
<b>GRADE DEFINITION (ZONING):</b>	THE AVERAGE BETWEEN THE ELEVATIONS IMMEDIATELY ADJACENT TO THE EXTERIOR BUILDING WALL AND THE NATURAL ELEVATION AT THE PROPERTY LINE. THESE MEASUREMENTS SHALL BE TAKEN TO 5.0m INTERVALS ALONG THE EXTERIOR BUILDING WALL
<b>BUILDING HEIGHT DEFINITION (ZONING):</b>	THE VERTICAL DISTANCE MEASURED IN METERS FROM THE FLOOR OF THE FIRST STOREY TO THE CEILING OF THE UPPERMOST STOREY. WHERE MEASURED IN STOREYS, THE NUMBER OF STOREYS FROM THE FIRST STOREY TO THE UPPER MOST STOREY.
<b>MAXIMUM BUILDING HEIGHT (ZONING &amp; BCBC 2018):</b>	ANY HEIGHT (BCBC 3.2.2.47)
<b>LOWEST AVERAGE GRADE (BCBC 2018):</b>	7.40m
<b>PROPOSED BUILDING HEIGHT (BCBC 2018):</b>	12 STOREYS / 142ft 7in (43.46 m)
<b>SITE AREA:</b>	OLD PROPERTY LINE: 76,981.87 S.F. (7,151.85 S.M.)   NEW PROPERTY LINE: 75,635.34 S.F. (7,026.75 S.M.)
<b>LOT COVERAGE:</b>	OLD PROPERTY LINE: 25,948 S.F. 76,981.87 S.F. = 33.7%   NEW PROPERTY LINE: 25,925 S.F. /75,635.34 S.F. = 34.3%
<b>BUILDING AREA:</b>	25,560 S.F. (2,374.60 S.M.)
<b>GROSS FLOOR AREA (NOT INCLUDING PARKADE) :</b>	292,869 S.F. (27208.40 S.M.)
<b>GROSS FLOOR AREA (PARKADE ONLY):</b>	147,488 S.F. (13,702.08 S.M.)
<b>FSR:</b>	3.493 (REFER TO FSR PLANS SHEET FOR AREA SCHEDULE, METHOD OF MEASUREMENT/EXCLUSIONS, AND CALCULATIONS)
<b>SETBACKS:</b>	EAST PROPERTY LINE = 6m   WEST PROPERTY LINE = 4m   SOUTH PROPERTY LINE = 6m NORTH PROPERTY LINE BUILDING A = 12m   BUILDING B = 6m UPPER FLOOR SETBACK (LEVEL 10) EAST PROPERTY LINE = 16m   WEST PROPERTY LINE = 5m   SOUTH PROPERTY LINE = 14m NORTH PROPERTY LINE BUILDING A = 33m   BUILDING B = 33m
<b>NUMBER OF STREETS:</b>	1

**0.1.1 code summary**

APPLICABLE BUILDING CODES: 2018 BCBC/ 2018 BC FIRE CODE/ ASHRAE 90.1-2016  
BUILDING CODE COMPLIANCE/ALTERNATE SOLUTIONS REPORT:

TITLE	VALUE	REFERENCE*
<b>1. PART 3 OR PART 9 BUILDING:</b>	PART 3	DIV. A - PART 1 COMPLIANCE 1.3.3.2.
<b>2. MAJOR OCCUPANCY (IES):</b>	RESIDENTIAL/STORAGE GARAGE	3.1.2., & APPENDIX A - 3.1.2.1.(1)
<b>3. BUILDING CLASSIFICATION (S):</b>		3.2.2.19.-3.2.2.90.
<b>3.1. STORAGE GARAGE:</b>		3.2.2.80
GROUP F, DIVISION 3, ANY HEIGHT, ANY AREA, FULLY SPRINKLERED (ACTUAL AREA 13,613.21 m <sup>2</sup> )		
NON-COMBUSTIBLE CONSTRUCTION		
FLOOR ASSEMBLIES: FIRE SEPARATIONS WITH A FIRE RESISTANCE RATING NOT LESS THAN 2 HR		
MEZZANINES: N/A		
LOAD BEARING WALLS, COLUMNS & ARCHES NOT LESS THAN 2 HR FIRE RESISTANCE RATING		
<b>3.2. RESIDENTIAL:</b>		3.2.2.47
GROUP C, ANY HEIGHT, ANY AREA, SPRINKLERED		3.2.2.47.(1)
NON-COMBUSTIBLE CONSTRUCTION		3.2.2.47.(2)
BUILDING SHALL BE SPRINKLERED THROUGHOUT		3.2.2.47.(2)(A)
FLOOR ASSEMBLIES: 2 HR FIRE SEPARATION WITH 2 HOUR FIRE RESISTANCE RATING		3.2.2.47.(2)(B)
MEZZANINES: 1 HR FIRE RESISTANCE RATING		3.2.2.47.(2)(C)
LOAD BEARING WALLS, COLUMNS & ARCHES NOT LESS THAN REQUIRED FOR THE SUPPORTED ASSEMBLY		3.2.2.47.(2)(D)
<b>3.3 STORAGE GARAGE CONSIDERED AS SEPARATE BUILDING:</b>		3.2.1.2.
FULLY SPRINKLERED		3.2.1.2(80)
NON-COMBUSTIBLE CONSTRUCTION		3.2.1.2.(1)
2 HR FIRE SEPARATION, EXTERIOR WALL OPENINGS EXEMPT		3.2.1.2.(1), 3.2.1.2.(2)&(2)(A)
2 HR FIRE RESISTANCE RATING		3.2.1.2.(1)
F.T. RATED FIRESTOP 3.1.9.1(2)		3.1.9.1(2)
<b>4. BUILDINGS WITH MULTIPLE MAJOR OCCUPANCIES:</b>	YES	3.2.2.4-3.2.2.8, 3.2.2.47
<b>5. NON-COMBUSTIBLE CLADDING:</b>		3.1.4.8.(1)
<b>6. HIGH BUILDING:</b>	NA	3.2.6., 3.1.13.7., 3.5.1.1., 3.2.2.47.
<b>7. FIREWALL:</b>	2 HR	3.1.10.
<b>8. MEZZANINE(S):</b>	NA	3.2.1.1. (3) - (8)
<b>9. MEZZANINE EXITING:</b>	NA	3.4.2.2.
<b>10. INTERCONNECTED FLOOR SPACE:</b>	NA, STORAGE GARAGE EXEMPT	3.2.3.2.(3), 3.2.8., 3.1.3.1.(3), 3.2.8.2.(2)
<b>11. STORAGE GARAGE-HORIZONTAL FIRE SEPARATION:</b>	YES	3.2.1.2.
<b>12. SPRINKLER SYSTEM:</b>		3.2.2.18., 3.2.5.13.
<b>12.1. STORAGE GARAGE:</b>	YES - NFPA 13 - 2013	3.2.5.12.(1)
<b>12.2. RESIDENTIAL:</b>	YES - NFPA 13 - 2013	3.2.5.12.(1)
<b>12.3 FIRE EXTINGUISHERS:</b>	YES - NFPA 10 - 2013	BC FIRE CODE 2018
<b>13. STANDPIPE SYSTEM:</b>	YES - NFPA 14- 2013	3.2.5.8., 3.2.5.9., 3.2.5.16.
<b>14. FIRE ALARM SYSTEM:</b>	YES - SINGLE STAGE - CAN/ULC-5524-14	3.2.4.1. (2)&(4)
<b>15. SMOKE CONTROL MEASURES:</b>	YES	3.1.8.12
<b>16. ANNUNCIATOR AND ZONE INDICATION:</b>	YES	3.2.4.9., 3.2.4.8.

**NOTES:**

1. \*UNLESS OTHERWISE NOTED, REFERENCE NUMBERS LISTED REFER TO THE BRITISH COLUMBIA BUILDING CODE 2018



**WHITETAIL 204 STREET APARTMENTS**  
5360 - 204 STREET, LANGLEY, BC

**PROJECT DATA**  
SCALE: N.T.S.

**RE-ISSUED FOR DEVELOPMENT PERMIT**

23/05/20 REVISION #  
CITY OF LANGLEY FILE #  
PROJECT NUMBER: 21172.1



SD1.10

0.2.0 gross floor area summary notes

- GROSS FLOOR AREA IS MEASURED TO OUTSIDE FACE OF SHEATHING
- EXCLUSIONS: NONE

0.2.1 gross floor area summary (level)

LEVEL / AREA TYPE	AREA SF	AREA m <sup>2</sup>	AREA %	COMMENTS
<b>P2 LEVEL</b>				
CIRCULATION	2154 SF	200.13 m <sup>2</sup>	0.5%	
PARKADE	68151 SF	6331.40 m <sup>2</sup>	15.5%	
SERVICE ROOMS/SHAFTS	2033 SF	188.87 m <sup>2</sup>	0.5%	
STORAGE	892 SF	82.85 m <sup>2</sup>	0.2%	
	<b>73230 SF</b>	<b>6803.26 m<sup>2</sup></b>	<b>16.6%</b>	
<b>P1 LEVEL</b>				
CIRCULATION	2889 SF	268.39 m <sup>2</sup>	0.7%	
PARKADE	67243 SF	6247.05 m <sup>2</sup>	15.3%	
SERVICE ROOMS/SHAFTS	2425 SF	225.30 m <sup>2</sup>	0.6%	
STORAGE	745 SF	69.21 m <sup>2</sup>	0.2%	
	<b>73302 SF</b>	<b>6809.95 m<sup>2</sup></b>	<b>16.6%</b>	

0.2.1 gross floor area summary (level)

LEVEL / AREA TYPE	AREA SF	AREA m <sup>2</sup>	AREA %	COMMENTS
<b>BUILDING A</b>				
<b>P2 LEVEL</b>				
CIRCULATION	375 SF	34.85 m <sup>2</sup>	0.1%	
STORAGE	139 SF	12.92 m <sup>2</sup>	0.0%	
	<b>514 SF</b>	<b>47.77 m<sup>2</sup></b>	<b>0.1%</b>	
<b>P1 LEVEL</b>				
SERVICE ROOMS/SHAFTS	43 SF	3.99 m <sup>2</sup>	0.0%	
STORAGE	399 SF	37.08 m <sup>2</sup>	0.1%	
	<b>442 SF</b>	<b>41.08 m<sup>2</sup></b>	<b>0.1%</b>	
<b>1ST LEVEL</b>				
CIRCULATION	5268 SF	489.42 m <sup>2</sup>	1.2%	
INDOOR AMENITY	7329 SF	680.85 m <sup>2</sup>	1.7%	
RESIDENTIAL	12151 SF	1128.88 m <sup>2</sup>	2.8%	
SERVICE ROOMS/SHAFTS	636 SF	59.04 m <sup>2</sup>	0.1%	
	<b>25383 SF</b>	<b>2358.20 m<sup>2</sup></b>	<b>5.8%</b>	
<b>2ND LEVEL</b>				
CIRCULATION	3703 SF	344.01 m <sup>2</sup>	0.8%	
RESIDENTIAL	18862 SF	1752.37 m <sup>2</sup>	4.3%	
SERVICE ROOMS/SHAFTS	97 SF	8.97 m <sup>2</sup>	0.0%	
STORAGE	2898 SF	269.24 m <sup>2</sup>	0.7%	
	<b>25560 SF</b>	<b>2374.60 m<sup>2</sup></b>	<b>5.8%</b>	
<b>3RD LEVEL</b>				
CIRCULATION	3691 SF	342.87 m <sup>2</sup>	0.8%	
RESIDENTIAL	18875 SF	1753.52 m <sup>2</sup>	4.3%	
SERVICE ROOMS/SHAFTS	97 SF	8.97 m <sup>2</sup>	0.0%	
STORAGE	2898 SF	269.24 m <sup>2</sup>	0.7%	
	<b>25560 SF</b>	<b>2374.60 m<sup>2</sup></b>	<b>5.8%</b>	
<b>4TH LEVEL</b>				
CIRCULATION	3691 SF	342.87 m <sup>2</sup>	0.8%	
RESIDENTIAL	18875 SF	1753.52 m <sup>2</sup>	4.3%	
SERVICE ROOMS/SHAFTS	97 SF	8.97 m <sup>2</sup>	0.0%	
STORAGE	2898 SF	269.24 m <sup>2</sup>	0.7%	
	<b>25560 SF</b>	<b>2374.60 m<sup>2</sup></b>	<b>5.8%</b>	
<b>5TH LEVEL</b>				
CIRCULATION	3691 SF	342.87 m <sup>2</sup>	0.8%	
RESIDENTIAL	18875 SF	1753.52 m <sup>2</sup>	4.3%	
SERVICE ROOMS/SHAFTS	97 SF	8.97 m <sup>2</sup>	0.0%	
STORAGE	2898 SF	269.24 m <sup>2</sup>	0.7%	
	<b>25560 SF</b>	<b>2374.60 m<sup>2</sup></b>	<b>5.8%</b>	

0.2.1 gross floor area summary (level)

LEVEL / AREA TYPE	AREA SF	AREA m <sup>2</sup>	AREA %	COMMENTS
<b>6TH LEVEL</b>				
CIRCULATION	3691 SF	342.87 m <sup>2</sup>	0.8%	
RESIDENTIAL	18875 SF	1753.52 m <sup>2</sup>	4.3%	
SERVICE ROOMS/SHAFTS	97 SF	8.97 m <sup>2</sup>	0.0%	
STORAGE	2898 SF	269.24 m <sup>2</sup>	0.7%	
	<b>25560 SF</b>	<b>2374.60 m<sup>2</sup></b>	<b>5.8%</b>	
<b>7TH LEVEL</b>				
CIRCULATION	3691 SF	342.87 m <sup>2</sup>	0.8%	
RESIDENTIAL	18875 SF	1753.52 m <sup>2</sup>	4.3%	
SERVICE ROOMS/SHAFTS	97 SF	8.97 m <sup>2</sup>	0.0%	
STORAGE	2898 SF	269.24 m <sup>2</sup>	0.7%	
	<b>25560 SF</b>	<b>2374.60 m<sup>2</sup></b>	<b>5.8%</b>	
<b>8TH LEVEL</b>				
CIRCULATION	3691 SF	342.87 m <sup>2</sup>	0.8%	
RESIDENTIAL	19986 SF	1856.75 m <sup>2</sup>	4.5%	
SERVICE ROOMS/SHAFTS	97 SF	8.97 m <sup>2</sup>	0.0%	
STORAGE	1787 SF	166.01 m <sup>2</sup>	0.4%	
	<b>25960 SF</b>	<b>2374.60 m<sup>2</sup></b>	<b>5.8%</b>	
<b>9TH LEVEL</b>				
CIRCULATION	3975 SF	369.32 m <sup>2</sup>	0.9%	
RESIDENTIAL	9575 SF	889.57 m <sup>2</sup>	2.2%	
SERVICE ROOMS/SHAFTS	96 SF	8.92 m <sup>2</sup>	0.0%	
STORAGE	607 SF	56.37 m <sup>2</sup>	0.1%	
	<b>14253 SF</b>	<b>1324.18 m<sup>2</sup></b>	<b>3.2%</b>	
<b>10TH LEVEL</b>				
CIRCULATION	3328 SF	309.15 m <sup>2</sup>	0.8%	
RESIDENTIAL	9575 SF	889.51 m <sup>2</sup>	2.2%	
SERVICE ROOMS/SHAFTS	96 SF	8.92 m <sup>2</sup>	0.0%	
STORAGE	607 SF	56.37 m <sup>2</sup>	0.1%	
	<b>13605 SF</b>	<b>1263.96 m<sup>2</sup></b>	<b>3.1%</b>	
<b>11TH LEVEL</b>				
CIRCULATION	1778 SF	165.40 m <sup>2</sup>	0.4%	
INDOOR AMENITY	507 SF	47.09 m <sup>2</sup>	0.1%	
RESIDENTIAL	4756 SF	441.81 m <sup>2</sup>	1.1%	
SERVICE ROOMS/SHAFTS	33 SF	3.04 m <sup>2</sup>	0.0%	
STORAGE	254 SF	23.60 m <sup>2</sup>	0.1%	
	<b>7327 SF</b>	<b>680.74 m<sup>2</sup></b>	<b>1.7%</b>	
<b>12TH LEVEL</b>				
CIRCULATION	1395 SF	129.61 m <sup>2</sup>	0.3%	
RESIDENTIAL	5450 SF	506.32 m <sup>2</sup>	1.2%	
SERVICE ROOMS/SHAFTS	33 SF	3.04 m <sup>2</sup>	0.0%	
STORAGE	254 SF	23.60 m <sup>2</sup>	0.1%	
	<b>7132 SF</b>	<b>662.58 m<sup>2</sup></b>	<b>1.6%</b>	
<b>BUILDING B</b>				
<b>1ST LEVEL</b>				
CIRCULATION	1634 SF	151.83 m <sup>2</sup>	0.4%	
INDOOR AMENITY	745 SF	69.24 m <sup>2</sup>	0.2%	
RESIDENTIAL	3011 SF	279.69 m <sup>2</sup>	0.7%	
SERVICE ROOMS/SHAFTS	67 SF	6.23 m <sup>2</sup>	0.0%	
STORAGE	302 SF	28.02 m <sup>2</sup>	0.1%	
	<b>5759 SF</b>	<b>535.01 m<sup>2</sup></b>	<b>1.3%</b>	
<b>2ND LEVEL</b>				
CIRCULATION	1056 SF	98.14 m <sup>2</sup>	0.2%	
INDOOR AMENITY	750 SF	69.68 m <sup>2</sup>	0.2%	
RESIDENTIAL	3513 SF	326.39 m <sup>2</sup>	0.8%	
SERVICE ROOMS/SHAFTS	55 SF	5.08 m <sup>2</sup>	0.0%	
STORAGE	384 SF	35.72 m <sup>2</sup>	0.1%	
	<b>5799 SF</b>	<b>535.01 m<sup>2</sup></b>	<b>1.3%</b>	
<b>3RD LEVEL</b>				
CIRCULATION	1044 SF	97.00 m <sup>2</sup>	0.2%	
RESIDENTIAL	4263 SF	396.07 m <sup>2</sup>	1.0%	
SERVICE ROOMS/SHAFTS	55 SF	5.08 m <sup>2</sup>	0.0%	
STORAGE	397 SF	36.86 m <sup>2</sup>	0.1%	
	<b>5799 SF</b>	<b>535.01 m<sup>2</sup></b>	<b>1.3%</b>	

0.2.1 gross floor area summary (level)

LEVEL / AREA TYPE	AREA SF	AREA m <sup>2</sup>	AREA %	COMMENTS
<b>4TH LEVEL</b>				
CIRCULATION	1044 SF	97.00 m <sup>2</sup>	0.2%	
RESIDENTIAL	4263 SF	396.07 m <sup>2</sup>	1.0%	
SERVICE ROOMS/SHAFTS	55 SF	5.08 m <sup>2</sup>	0.0%	
STORAGE	397 SF	36.86 m <sup>2</sup>	0.1%	
	<b>5759 SF</b>	<b>535.01 m<sup>2</sup></b>	<b>1.3%</b>	
<b>5TH LEVEL</b>				
CIRCULATION	1044 SF	97.00 m <sup>2</sup>	0.2%	
RESIDENTIAL	4263 SF	396.07 m <sup>2</sup>	1.0%	
SERVICE ROOMS/SHAFTS	55 SF	5.08 m <sup>2</sup>	0.0%	
STORAGE	397 SF	36.86 m <sup>2</sup>	0.1%	
	<b>5759 SF</b>	<b>535.01 m<sup>2</sup></b>	<b>1.3%</b>	
<b>6TH LEVEL</b>				
CIRCULATION	1044 SF	97.00 m <sup>2</sup>	0.2%	
RESIDENTIAL	4263 SF	396.07 m <sup>2</sup>	1.0%	
SERVICE ROOMS/SHAFTS	55 SF	5.08 m <sup>2</sup>	0.0%	
STORAGE	397 SF	36.86 m <sup>2</sup>	0.1%	
	<b>5759 SF</b>	<b>535.01 m<sup>2</sup></b>	<b>1.3%</b>	
<b>7TH LEVEL</b>				
CIRCULATION	1044 SF	97.00 m <sup>2</sup>	0.2%	
RESIDENTIAL	4263 SF	396.07 m <sup>2</sup>	1.0%	
SERVICE ROOMS/SHAFTS	55 SF	5.08 m <sup>2</sup>	0.0%	
STORAGE	397 SF	36.86 m <sup>2</sup>	0.1%	
	<b>5759 SF</b>	<b>535.01 m<sup>2</sup></b>	<b>1.3%</b>	
<b>8TH LEVEL</b>				
CIRCULATION	1044 SF	97.00 m <sup>2</sup>	0.2%	
RESIDENTIAL	4263 SF	396.07 m <sup>2</sup>	1.0%	
SERVICE ROOMS/SHAFTS	55 SF	5.08 m <sup>2</sup>	0.0%	
STORAGE	397 SF	36.86 m <sup>2</sup>	0.1%	
	<b>5759 SF</b>	<b>535.01 m<sup>2</sup></b>	<b>1.3%</b>	
<b>9TH LEVEL</b>				
CIRCULATION	560 SF	52.05 m <sup>2</sup>	0.1%	
	<b>560 SF</b>	<b>52.05 m<sup>2</sup></b>	<b>0.1%</b>	
<b>AREA GRAND TOTAL</b>	<b>440739 SF</b>	<b>40946.00 m<sup>2</sup></b>	<b>100.0%</b>	

0.2.2 gross floor area outdoor amenity

LEVEL / AREA TYPE	AREA SF	AREA m <sup>2</sup>	AREA %	COMMENTS
<b>1ST LEVEL</b>				
OUTDOOR AMENITY	5026 SF	466.89 m <sup>2</sup>	27.7%	
	<b>5026 SF</b>	<b>466.89 m<sup>2</sup></b>	<b>27.7%</b>	
<b>BUILDING A</b>				
<b>9TH LEVEL</b>				
OUTDOOR AMENITY	7020 SF	652.14 m <sup>2</sup>	38.7%	
	<b>7020 SF</b>	<b>652.14 m<sup>2</sup></b>	<b>38.7%</b>	
<b>11TH LEVEL</b>				
OUTDOOR AMENITY	3214 SF	298.62 m <sup>2</sup>	17.7%	
	<b>3214 SF</b>	<b>298.62 m<sup>2</sup></b>	<b>17.7%</b>	
<b>BUILDING B</b>				
<b>9TH LEVEL</b>				
OUTDOOR AMENITY	2886 SF	268.08 m <sup>2</sup>	15.9%	
	<b>2886 SF</b>	<b>268.08 m<sup>2</sup></b>	<b>15.9%</b>	
<b>AREA GRAND TOTAL</b>	<b>18145 SF</b>	<b>1685.74 m<sup>2</sup></b>	<b>100.0%</b>	



WHITETAIL 204 STREET APARTMENTS  
5360 - 204 STREET, LANGLEY, BC

PROJECT DATA  
SCALE: N.T.S.

RE-ISSUED FOR DEVELOPMENT PERMIT  
23/05/29 REVISION #  
CITY OF LANGLEY FILE #  
PROJECT NUMBER: 21172.1



SD1.11

0.3.0 unit count summary building a

UNIT TYPE	UNIT COUNT	UNIT TYPE %	COMMENTS
<b>BUILDING A</b>			
1 BED	139	43.8%	
1 BED & DEN	18	5.7%	
1 BED (ADAPTABLE)	62	19.6%	
2 BED	56	17.7%	
2 BED (ADAPTABLE)	7	2.2%	
STUDIO	35	11.0%	
<b>BUILDING A: 317</b>	<b>100.0%</b>		
<b>TOTAL UNITS: 317</b>	<b>100.0%</b>		

0.3.0 unit count summary building b

UNIT TYPE	UNIT COUNT	UNIT TYPE %	COMMENTS
<b>BUILDING B</b>			
1 BED	16	30.2%	
1 BED & DEN	1	1.9%	
1 BED (ADAPTABLE)	8	15.1%	
2 BED	14	26.4%	
2 BED (ADAPTABLE)	7	13.2%	
STUDIO	7	13.2%	
<b>BUILDING B: 53</b>	<b>100.0%</b>		
<b>TOTAL UNITS: 53</b>	<b>100.0%</b>		

0.4.0 unit floor area summary notes

- ALL UNIT AREAS ARE MEASURED TO THE FOLLOWING: A) EXTERIOR WALL: EXTERIOR SIDE OF SHEATHING. B) PARTY WALL: CENTER OF WALL. C) CORRIDOR/STAIR/ELEVATOR WALL: FULL THICKNESS OF WALL.
- AREAS GIVEN ON DRAWINGS AND IN SCHEDULES ARE NOT TO BE CONSIDERED LEGAL STRATA AREAS. CONFIRM STRATA AREAS BY SURVEY ON SITE.

0.4.1 unit floor area summary

UNIT	UNIT TYPE	COUNT	UNIT AREA SF (LSF)	UNIT AREA m <sup>2</sup> (1m <sup>2</sup> )	TOTAL UNIT AREA SF	TOTAL UNIT AREA m <sup>2</sup>
<b>BUILDING A</b>						
UNIT A1	STUDIO	1	307 SF	28 m <sup>2</sup>	307 SF	28.48 m <sup>2</sup>
UNIT A2	STUDIO	6	402 SF	37 m <sup>2</sup>	2,411 SF	223.95 m <sup>2</sup>
UNIT A4	STUDIO	8	377 SF	35 m <sup>2</sup>	3,017 SF	280.26 m <sup>2</sup>
UNIT A5	STUDIO	1	324 SF	30 m <sup>2</sup>	324 SF	30.11 m <sup>2</sup>
UNIT A6	STUDIO	1	389 SF	36 m <sup>2</sup>	389 SF	36.18 m <sup>2</sup>
UNIT A7	STUDIO	18	418 SF	39 m <sup>2</sup>	7,524 SF	699.00 m <sup>2</sup>
UNIT B1	1 BED	117	502 SF	47 m <sup>2</sup>	58,734 SF	5,456.57 m <sup>2</sup>
UNIT B1	1 BED	3	505 SF	47 m <sup>2</sup>	1,515 SF	140.78 m <sup>2</sup>
UNIT B1	1 BED	1	506 SF	47 m <sup>2</sup>	506 SF	46.99 m <sup>2</sup>
UNIT B1.1	1 BED (ADAPTABLE)	25	507 SF	47 m <sup>2</sup>	12,675 SF	1,177.55 m <sup>2</sup>
UNIT B1.2	1 BED (ADAPTABLE)	29	497 SF	46 m <sup>2</sup>	14,413 SF	1,339.01 m <sup>2</sup>
UNIT B1.2	1 BED (ADAPTABLE)	1	508 SF	47 m <sup>2</sup>	508 SF	47.17 m <sup>2</sup>
UNIT B1.3	1 BED (ADAPTABLE)	7	494 SF	46 m <sup>2</sup>	3,457 SF	321.15 m <sup>2</sup>
UNIT B2	1 BED	7	534 SF	50 m <sup>2</sup>	3,738 SF	347.27 m <sup>2</sup>
UNIT B2.1	1 BED	4	557 SF	52 m <sup>2</sup>	2,227 SF	206.90 m <sup>2</sup>
UNIT B3	1 BED	7	442 SF	41 m <sup>2</sup>	3,093 SF	287.32 m <sup>2</sup>
UNIT C2	1 BED & DEN	1	666 SF	62 m <sup>2</sup>	666 SF	61.87 m <sup>2</sup>
UNIT C3	1 BED & DEN	2	556 SF	52 m <sup>2</sup>	1,112 SF	103.32 m <sup>2</sup>
UNIT C4	1 BED & DEN	2	605 SF	56 m <sup>2</sup>	1,210 SF	112.42 m <sup>2</sup>
UNIT C5	1 BED & DEN	8	556 SF	52 m <sup>2</sup>	4,445 SF	412.93 m <sup>2</sup>
UNIT C6	1 BED & DEN	3	633 SF	59 m <sup>2</sup>	1,900 SF	176.48 m <sup>2</sup>
UNIT C6	1 BED & DEN	1	634 SF	59 m <sup>2</sup>	634 SF	58.89 m <sup>2</sup>
UNIT C7	1 BED & DEN	1	694 SF	65 m <sup>2</sup>	694 SF	64.51 m <sup>2</sup>
UNIT D1	2 BED	7	816 SF	76 m <sup>2</sup>	5,710 SF	530.47 m <sup>2</sup>
UNIT D2	2 BED	15	784 SF	73 m <sup>2</sup>	11,754 SF	1,091.95 m <sup>2</sup>
UNIT D2	2 BED	1	794 SF	74 m <sup>2</sup>	794 SF	73.80 m <sup>2</sup>
UNIT D3	2 BED	16	759 SF	71 m <sup>2</sup>	12,143 SF	1,128.10 m <sup>2</sup>
UNIT D3.2	2 BED (ADAPTABLE)	7	759 SF	71 m <sup>2</sup>	5,313 SF	493.59 m <sup>2</sup>
UNIT D5	2 BED	7	753 SF	70 m <sup>2</sup>	5,268 SF	489.37 m <sup>2</sup>
UNIT D5	2 BED	2	765 SF	71 m <sup>2</sup>	1,529 SF	142.08 m <sup>2</sup>
UNIT D6	2 BED	8	840 SF	78 m <sup>2</sup>	6,720 SF	624.31 m <sup>2</sup>
<b>BUILDING A: 317</b>					<b>174,728 SF</b>	<b>16,232.75 m<sup>2</sup></b>

0.4.1 unit floor area summary

UNIT	UNIT TYPE	COUNT	UNIT AREA SF (LSF)	UNIT AREA m <sup>2</sup> (1m <sup>2</sup> )	TOTAL UNIT AREA SF	TOTAL UNIT AREA m <sup>2</sup>
<b>BUILDING B</b>						
UNIT A3	STUDIO	7	417 SF	39 m <sup>2</sup>	2,921 SF	271.39 m <sup>2</sup>
UNIT B1	1 BED	16	502 SF	47 m <sup>2</sup>	8,032 SF	746.20 m <sup>2</sup>
UNIT B1.1	1 BED (ADAPTABLE)	8	507 SF	47 m <sup>2</sup>	4,056 SF	376.81 m <sup>2</sup>
UNIT C1	1 BED & DEN	1	671 SF	62 m <sup>2</sup>	671 SF	62.33 m <sup>2</sup>
UNIT D1	2 BED	7	821 SF	76 m <sup>2</sup>	5,746 SF	533.86 m <sup>2</sup>
UNIT D1	2 BED	1	829 SF	77 m <sup>2</sup>	829 SF	76.99 m <sup>2</sup>
UNIT D3.1	2 BED (ADAPTABLE)	7	764 SF	71 m <sup>2</sup>	5,348 SF	496.85 m <sup>2</sup>
UNIT D4	2 BED	6	750 SF	70 m <sup>2</sup>	4,500 SF	418.11 m <sup>2</sup>
<b>BUILDING B: 53</b>					<b>32,104 SF</b>	<b>2,982.53 m<sup>2</sup></b>
<b>UNIT TOTALS: 370</b>					<b>206,831 SF</b>	<b>19,215.27 m<sup>2</sup></b>

0.5.0 parking stall summary - building a 'market'

	UNITS / AREA	CURRENT FACTOR	REQUIRED STALLS	PROPOSED FACTOR	PROPOSED STALLS
<b>VEHICLE PARKING STALL DATA</b>					
STUDIO	35 UNITS	*1.2	42 STALLS	*1.0	35 STALLS
1 BED + 1 BED (ADAPTABLE)	202 UNITS	*1.2	242 STALLS	*1.0	202 STALLS
1 BED & DEN	17 UNITS	*1.2	20 STALLS	*1.0	17 STALLS
2 BED + 2 BED (ADAPTABLE)	63 UNITS	*1.4	88 STALLS	*1.25	79 STALLS
VISITOR	317 UNITS	*0.2	63.4 = 63 STALLS	*0.15	47.6 = 48 STALLS
ACCESSIBLE	N/A	5% OF TOTAL STALLS	0.05(455) = 22.75 = 23 STALLS	5% OF TOTAL STALLS	0.05(381) = 19.1 = 19 STALLS
SMALL CAR (RESIDENT)	N/A	40% MAX OF TOTAL STALLS (180 MAX)	0.40(392) = 156.8 = 157 STALLS	40% MAX OF TOTAL STALLS (150 MAX)	0.40(333) = 133.2 = 133 STALLS
SMALL CAR (VISITOR)	N/A		0.40(63) = 25.2 = 25 STALLS		0.40(48) = 19.2 = 19 STALLS
<b>TOTAL STALLS</b>			<b>455</b>		<b>381</b>
<b>SPECIALTY PARKING STALL DATA</b>					
LOADING	N/A	9m x 3m x 3.6m (LWH)	1	9m x 3m x 3.6m (LWH)	1
ELECTRIC VEHICLE CHARGING	N/A	10% OF RESIDENT STALLS	39 LEVEL II EV STALLS	10% OF RESIDENT STALLS	33 LEVEL II EV STALLS
<b>BIKE PARKING STALL DATA</b>					
TENANT (UNIT) (CLASS 1)	317 UNITS	*0.5	159	*0.5	160
VISITOR / EMPLOYEE (CLASS 2)	N/A	6 SPACES PER BUILDING	6	6 SPACES PER BUILDING	6

0.5.0 parking stall summary - building b 'resident'

	UNITS / AREA	CURRENT FACTOR	REQUIRED STALLS	PROPOSED FACTOR	PROPOSED STALLS
<b>VEHICLE PARKING STALL DATA</b>					
STUDIO	7 UNITS	*1.2	8.4 = 8 STALLS	*1.0	7 STALLS
1 BED + 1 BED (ADAPTABLE)	24 UNITS	*1.2	28.8 = 29 STALLS	*1.0	24 STALLS
1 BED & DEN	1 UNIT	*1.2	1.2 = 1 STALL	*1.0	1 STALL
2 BED + 2 BED (ADAPTABLE)	21 UNITS	*1.4	29.4 = 29 STALLS	*1.25	26 STALLS
VISITOR	53 UNITS	*0.2	10.6 = 11 STALLS	*0.15	8 STALLS
ACCESSIBLE	N/A	5% OF TOTAL STALLS	0.05(78) = 3.9 = 4 STALLS	5% OF TOTAL STALLS	0.05(66) = 3 STALLS
SMALL CAR (RESIDENT)	N/A	40% MAX OF TOTAL STALLS (36 MAX)	0.40 (57) = 26.8 = 27 STALLS	40% MAX OF TOTAL STALLS (72 MAX)	0.40 (58) = 23 STALLS
SMALL CAR (VISITOR)	N/A		0.40 (11) = 4.4 = 4 STALLS		0.40 (8) = 3 STALLS
<b>TOTAL STALLS</b>			<b>82</b>		<b>66</b>
<b>SPECIALTY PARKING STALL DATA</b>					
LOADING	N/A	9m x 3m x 3.6m (LWH)	1	9m x 3m x 3.6m (LWH)	1
ELECTRIC VEHICLE CHARGING	N/A	10% OF RESIDENT STALLS	7 LEVEL II EV STALLS	10% OF RESIDENT STALLS	6 LEVEL II EV STALLS
<b>BIKE PARKING STALL DATA</b>					
TENANT (UNIT) (CLASS 1)	53 UNITS	*0.5	26.5 = 27	*0.5	27
VISITOR / EMPLOYEE (CLASS 2)	N/A	6 SPACES PER BUILDING	6	6 SPACES PER BUILDING	6



WHITETAIL 204 STREET APARTMENTS  
5360 - 204 STREET, LANGLEY, BC

PROJECT DATA  
SCALE: N.T.S.

RE-ISSUED FOR DEVELOPMENT PERMIT  
23/05/20 REVISION #  
CITY OF LANGLEY FILE #  
PROJECT NUMBER: 21172.1



**0.5.1 vehicle parking stall summary**

PARKING STALL USER/TYPE	PARKING STALL COUNT	% BY STALL USER	% OF OVERALL	LEVEL	COMMENTS
<b>MARKET RESIDENT</b>					
ACCESSIBLE	11	3%	2.4%	P2 LEVEL	
ACCESSIBLE	6	2%	1.3%	P1 LEVEL	
PARALLEL	2	1%	0.4%	P1 LEVEL	
SMALL CAR	97	29%	21.6%	P2 LEVEL	
SMALL CAR	37	11%	8.2%	P1 LEVEL	
SMALL EV	19	6%	4.2%	P1 LEVEL	
STANDARD	119	36%	26.5%	P2 LEVEL	
STANDARD	29	9%	6.5%	P1 LEVEL	
STANDARD EV	15	4%	3.3%	P1 LEVEL	
<b>MARKET RESIDENT: 335</b>		<b>100%</b>	<b>74.6%</b>		
<b>MARKET VISITOR</b>					
ACCESSIBLE	2	4%	0.4%	P1 LEVEL	
SMALL CAR	19	40%	4.2%	P1 LEVEL	
STANDARD	27	56%	6.0%	P1 LEVEL	
<b>MARKET VISITOR: 48</b>		<b>100%</b>	<b>10.7%</b>		
<b>RENTAL RESIDENT</b>					
ACCESSIBLE	3	5%	0.7%	P1 LEVEL	
SMALL CAR	32	55%	7.1%	P1 LEVEL	
STANDARD	17	29%	3.8%	P1 LEVEL	
STANDARD EV	6	10%	1.3%	P1 LEVEL	
<b>RENTAL RESIDENT: 58</b>		<b>100%</b>	<b>12.9%</b>		
<b>RENTAL VISITOR</b>					
ACCESSIBLE	1	13%	0.2%	1ST LEVEL	
STANDARD	7	88%	1.6%	1ST LEVEL	
<b>RENTAL VISITOR: 8</b>		<b>100%</b>	<b>1.8%</b>		
<b>TOTAL PARKING STALLS: 449</b>			<b>100.0%</b>		

**0.5.2 bike parking stall summary**

PARKING STALL USER/TYPE	PARKING STALL COUNT	PARKING STALL %	LEVEL	COMMENTS
<b>MARKET RESIDENT</b>				
STANDARD BIKE	16	8.0%	P2 LEVEL	
VERTICAL BIKE	11	5.5%	P2 LEVEL	
VERTICAL BIKE	11	5.5%	P1 LEVEL	
STANDARD BIKE	122	61.3%	2ND LEVEL	
<b>MARKET RESIDENT: 160</b>		<b>80.4%</b>		
<b>RENTAL RESIDENT</b>				
STANDARD BIKE	24	12.1%	P1 LEVEL	
VERTICAL BIKE	3	1.5%	P1 LEVEL	
<b>RENTAL RESIDENT: 27</b>		<b>13.6%</b>		
<b>MARKET VISITOR</b>				
BIKE (RACK)	6	3.0%	1ST LEVEL	
<b>MARKET VISITOR: 6</b>		<b>3.0%</b>		
<b>RENTAL VISITOR</b>				
BIKE (RACK)	6	3.0%	1ST LEVEL	
<b>RENTAL VISITOR: 6</b>		<b>3.0%</b>		
<b>TOTAL PARKING STALLS: 199</b>		<b>100.0%</b>		

**0.5.3 storage stall summary**

PARKING STALL USER/TYPE	PARKING STALL COUNT	PARKING STALL %	LEVEL	COMMENTS
<b>MARKET RESIDENT</b>				
STORAGE COMPARTMENT STALL	60	14.5%	3RD LEVEL	
STORAGE COMPARTMENT STALL	60	14.5%	4TH LEVEL	
STORAGE COMPARTMENT STALL	60	14.5%	5TH LEVEL	
STORAGE COMPARTMENT STALL	60	14.5%	6TH LEVEL	
STORAGE COMPARTMENT STALL	60	14.5%	7TH LEVEL	
STORAGE COMPARTMENT STALL	35	8.5%	8TH LEVEL	
STORAGE COMPARTMENT STALL	9	2.2%	9TH LEVEL	
STORAGE COMPARTMENT STALL	9	2.2%	10TH LEVEL	
STORAGE COMPARTMENT STALL	4	1.0%	11TH LEVEL	
STORAGE COMPARTMENT STALL	4	1.0%	12TH LEVEL	
<b>MARKET RESIDENT: 361</b>		<b>87.2%</b>		
<b>RENTAL RESIDENT</b>				
STORAGE COMPARTMENT STALL	5	1.2%	1ST LEVEL	
STORAGE COMPARTMENT STALL	6	1.4%	2ND LEVEL	
STORAGE COMPARTMENT STALL	7	1.7%	3RD LEVEL	
STORAGE COMPARTMENT STALL	7	1.7%	4TH LEVEL	
STORAGE COMPARTMENT STALL	7	1.7%	5TH LEVEL	
STORAGE COMPARTMENT STALL	7	1.7%	6TH LEVEL	
STORAGE COMPARTMENT STALL	7	1.7%	7TH LEVEL	
STORAGE COMPARTMENT STALL	7	1.7%	8TH LEVEL	
<b>RENTAL RESIDENT: 53</b>		<b>12.8%</b>		
<b>TOTAL STORAGE STALLS: 414</b>		<b>100.0%</b>		

NOTE: TOTAL REQUIRED STORAGE IS 1 PER UNIT



**WHITETAIL 204 STREET APARTMENTS**  
5360 - 204 STREET, LANGLEY, BC

**PROJECT DATA**  
SCALE: N.T.S.

**RE-ISSUED FOR DEVELOPMENT PERMIT**  
23/05/20 REVISION #:  
CITY OF LANGLEY FILE #  
PROJECT NUMBER: 21172.1



SD1.13

0.6.0 fsr floor area summary notes

- FSR IS MEASURED TO OUTSIDE FACE OF SHEATHING
- EXCLUSIONS: STORAGE ROOMS (FOR PROPERTIES IN THE "FLOOD CONSTRUCTION LEVEL")

0.6.1 fsr floor area summary

LEVEL / AREA TYPE	AREA SF	AREA m <sup>2</sup>	AREA %	COMMENTS
<b>BUILDING A</b>				
<b>SERVICE ROOMS/SHAFTS</b>				
1ST LEVEL	636 SF	59.04 m <sup>2</sup>	0.2%	
2ND LEVEL	97 SF	8.97 m <sup>2</sup>	0.0%	
3RD LEVEL	97 SF	8.97 m <sup>2</sup>	0.0%	
4TH LEVEL	97 SF	8.97 m <sup>2</sup>	0.0%	
5TH LEVEL	97 SF	8.97 m <sup>2</sup>	0.0%	
6TH LEVEL	97 SF	8.97 m <sup>2</sup>	0.0%	
7TH LEVEL	97 SF	8.97 m <sup>2</sup>	0.0%	
8TH LEVEL	97 SF	8.97 m <sup>2</sup>	0.0%	
9TH LEVEL	96 SF	8.92 m <sup>2</sup>	0.0%	
10TH LEVEL	96 SF	8.92 m <sup>2</sup>	0.0%	
11TH LEVEL	33 SF	3.04 m <sup>2</sup>	0.0%	
12TH LEVEL	33 SF	3.04 m <sup>2</sup>	0.0%	
<b>RESIDENTIAL</b>	<b>1569 SF</b>	<b>145.76 m<sup>2</sup></b>	<b>0.5%</b>	
<b>RESIDENTIAL</b>				
1ST LEVEL	12151 SF	1128.88 m <sup>2</sup>	4.1%	
2ND LEVEL	18686 SF	1735.98 m <sup>2</sup>	6.4%	
3RD LEVEL	18875 SF	1753.52 m <sup>2</sup>	6.4%	
4TH LEVEL	18875 SF	1753.52 m <sup>2</sup>	6.4%	
5TH LEVEL	18875 SF	1753.52 m <sup>2</sup>	6.4%	
6TH LEVEL	18875 SF	1753.52 m <sup>2</sup>	6.4%	
7TH LEVEL	18875 SF	1753.52 m <sup>2</sup>	6.4%	
8TH LEVEL	19986 SF	1856.75 m <sup>2</sup>	6.8%	
9TH LEVEL	9575 SF	889.57 m <sup>2</sup>	3.3%	
10TH LEVEL	9575 SF	889.51 m <sup>2</sup>	3.3%	
11TH (PUPF)	4756 SF	441.81 m <sup>2</sup>	1.6%	
12TH LEVEL	5450 SF	506.32 m <sup>2</sup>	1.9%	
<b>INDOOR AMENITY</b>	<b>174552 SF</b>	<b>16216.41 m<sup>2</sup></b>	<b>59.6%</b>	
<b>INDOOR AMENITY</b>				
1ST LEVEL	7329 SF	680.85 m <sup>2</sup>	2.5%	
11TH LEVEL	507 SF	47.09 m <sup>2</sup>	0.2%	
<b>CIRCULATION</b>	<b>7836 SF</b>	<b>727.95 m<sup>2</sup></b>	<b>2.7%</b>	
<b>CIRCULATION</b>				
1ST LEVEL	5268 SF	489.42 m <sup>2</sup>	1.8%	
2ND LEVEL	3703 SF	344.01 m <sup>2</sup>	1.3%	
3RD LEVEL	3691 SF	342.87 m <sup>2</sup>	1.3%	
4TH LEVEL	3691 SF	342.87 m <sup>2</sup>	1.3%	
5TH LEVEL	3691 SF	342.87 m <sup>2</sup>	1.3%	
6TH LEVEL	3691 SF	342.87 m <sup>2</sup>	1.3%	
7TH LEVEL	3691 SF	342.87 m <sup>2</sup>	1.3%	
8TH LEVEL	3691 SF	342.87 m <sup>2</sup>	1.3%	
9TH LEVEL	3975 SF	369.32 m <sup>2</sup>	1.4%	
10TH LEVEL	3328 SF	309.15 m <sup>2</sup>	1.1%	
11TH LEVEL	1778 SF	165.19 m <sup>2</sup>	0.6%	
12TH LEVEL	1395 SF	129.61 m <sup>2</sup>	0.5%	
<b>AREA EXCLUSION</b>	<b>41591 SF</b>	<b>3863.92 m<sup>2</sup></b>	<b>14.2%</b>	
<b>AREA EXCLUSION</b>				
2ND LEVEL	2898 SF	269.24 m <sup>2</sup>	1.0%	STORAGE
3RD LEVEL	2898 SF	269.24 m <sup>2</sup>	1.0%	STORAGE
4TH LEVEL	2898 SF	269.24 m <sup>2</sup>	1.0%	STORAGE
5TH LEVEL	2898 SF	269.24 m <sup>2</sup>	1.0%	STORAGE
6TH LEVEL	2898 SF	269.24 m <sup>2</sup>	1.0%	STORAGE
7TH LEVEL	2898 SF	269.24 m <sup>2</sup>	1.0%	STORAGE
8TH LEVEL	1787 SF	166.01 m <sup>2</sup>	0.6%	STORAGE
9TH LEVEL	607 SF	56.37 m <sup>2</sup>	0.2%	STORAGE
10TH LEVEL	607 SF	56.37 m <sup>2</sup>	0.2%	STORAGE
11TH LEVEL	254 SF	23.60 m <sup>2</sup>	0.1%	STORAGE
12TH LEVEL	254 SF	23.60 m <sup>2</sup>	0.1%	STORAGE
<b>AREA GRAND TOTAL</b>	<b>246444 SF</b>	<b>22895.43 m<sup>2</sup></b>	<b>84.1%</b>	

0.6.1 fsr floor area summary

LEVEL / AREA TYPE	AREA SF	AREA m <sup>2</sup>	AREA %	COMMENTS
<b>BUILDING B</b>				
<b>SERVICE ROOMS/SHAFTS</b>				
1ST LEVEL	76 SF	7.07 m <sup>2</sup>	0.0%	
2ND LEVEL	55 SF	5.08 m <sup>2</sup>	0.0%	
3RD LEVEL	55 SF	5.08 m <sup>2</sup>	0.0%	
4TH LEVEL	55 SF	5.08 m <sup>2</sup>	0.0%	
5TH LEVEL	55 SF	5.08 m <sup>2</sup>	0.0%	
6TH LEVEL	55 SF	5.08 m <sup>2</sup>	0.0%	
7TH LEVEL	55 SF	5.08 m <sup>2</sup>	0.0%	
8TH LEVEL	55 SF	5.08 m <sup>2</sup>	0.0%	
<b>RESIDENTIAL</b>	<b>459 SF</b>	<b>42.61 m<sup>2</sup></b>	<b>0.2%</b>	
<b>RESIDENTIAL</b>				
1ST LEVEL	3011 SF	279.69 m <sup>2</sup>	1.0%	
2ND LEVEL	3513 SF	326.39 m <sup>2</sup>	1.2%	
3RD LEVEL	4263 SF	396.07 m <sup>2</sup>	1.5%	
4TH LEVEL	4263 SF	396.07 m <sup>2</sup>	1.5%	
5TH LEVEL	4263 SF	396.07 m <sup>2</sup>	1.5%	
6TH LEVEL	4263 SF	396.07 m <sup>2</sup>	1.5%	
7TH LEVEL	4263 SF	396.07 m <sup>2</sup>	1.5%	
8TH LEVEL	4263 SF	396.07 m <sup>2</sup>	1.5%	
<b>INDOOR AMENITY</b>	<b>32104 SF</b>	<b>2982.53 m<sup>2</sup></b>	<b>11.0%</b>	
<b>INDOOR AMENITY</b>				
1ST LEVEL	736 SF	68.39 m <sup>2</sup>	0.3%	
2ND LEVEL	750 SF	69.68 m <sup>2</sup>	0.3%	
<b>CIRCULATION</b>	<b>1486 SF</b>	<b>138.08 m<sup>2</sup></b>	<b>0.5%</b>	
<b>CIRCULATION</b>				
1ST LEVEL	1634 SF	151.83 m <sup>2</sup>	0.6%	
2ND LEVEL	1056 SF	98.14 m <sup>2</sup>	0.4%	
3RD LEVEL	1044 SF	97.00 m <sup>2</sup>	0.4%	
4TH LEVEL	1044 SF	97.00 m <sup>2</sup>	0.4%	
5TH LEVEL	1044 SF	97.00 m <sup>2</sup>	0.4%	
6TH LEVEL	1044 SF	97.00 m <sup>2</sup>	0.4%	
7TH LEVEL	1044 SF	97.00 m <sup>2</sup>	0.4%	
8TH LEVEL	1044 SF	97.00 m <sup>2</sup>	0.4%	
9TH LEVEL	560 SF	52.05 m <sup>2</sup>	0.2%	
<b>AREA EXCLUSION</b>	<b>9515 SF</b>	<b>884.00 m<sup>2</sup></b>	<b>3.2%</b>	
<b>AREA EXCLUSION</b>				
1ST LEVEL	302 SF	28.02 m <sup>2</sup>	0.1%	STORAGE
2ND LEVEL	384 SF	35.72 m <sup>2</sup>	0.1%	STORAGE
3RD LEVEL	397 SF	36.86 m <sup>2</sup>	0.1%	STORAGE
4TH LEVEL	397 SF	36.86 m <sup>2</sup>	0.1%	STORAGE
5TH LEVEL	397 SF	36.86 m <sup>2</sup>	0.1%	STORAGE
6TH LEVEL	397 SF	36.86 m <sup>2</sup>	0.1%	STORAGE
7TH LEVEL	397 SF	36.86 m <sup>2</sup>	0.1%	STORAGE
8TH LEVEL	397 SF	36.86 m <sup>2</sup>	0.1%	STORAGE
<b>AREA GRAND TOTAL</b>	<b>293075 SF</b>	<b>27227.55 m<sup>2</sup></b>	<b>100.0%</b>	

0.6.2 fsr calculation

- SITE AREA: 76,981.87 SF
- BUILDING AREA: 292,869 SF
- EXCLUSIONS: BUILDING A: 20,897 SF + BUILDING B: 3,067 SF
- FSR: 292,869 SF - 3,067 SF - 20,897 SF = 268,905 SF / 76,981.87 SF = 3.493



WHITETAIL 204 STREET APARTMENTS  
5360 - 204 STREET, LANGLEY, BC

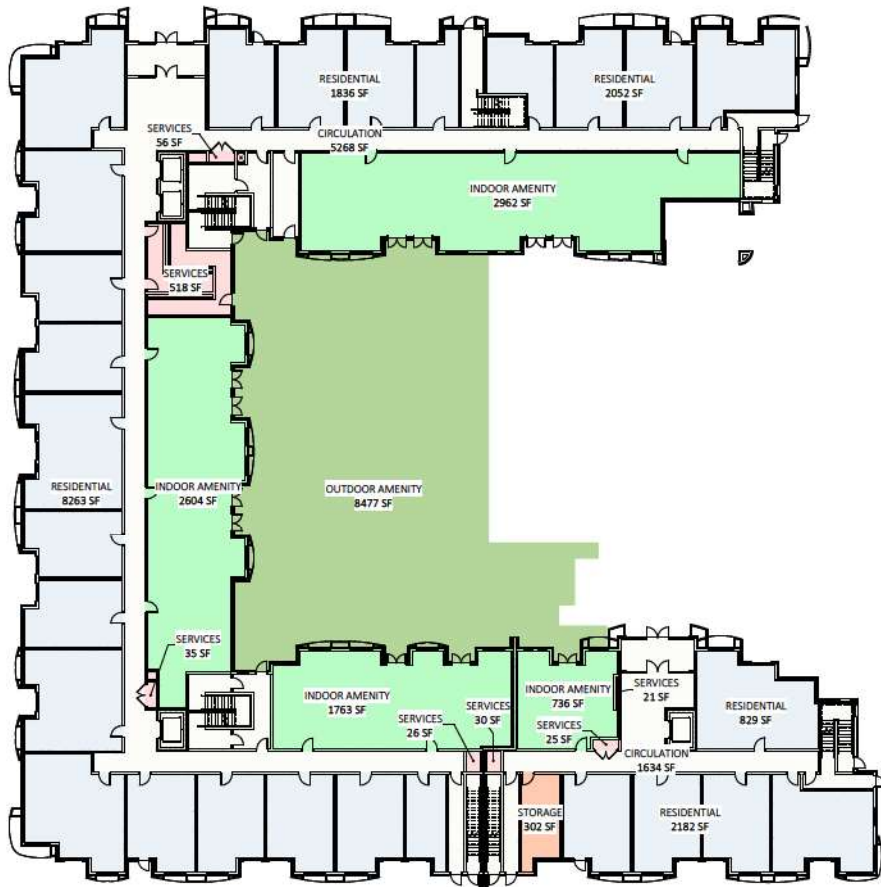
FSR PLANS  
SCALE: N.T.S.

RE-ISSUED FOR DEVELOPMENT PERMIT

23/05/29 REVISION #  
CITY OF LANGLEY FILE #  
PROJECT NUMBER: 21172.1



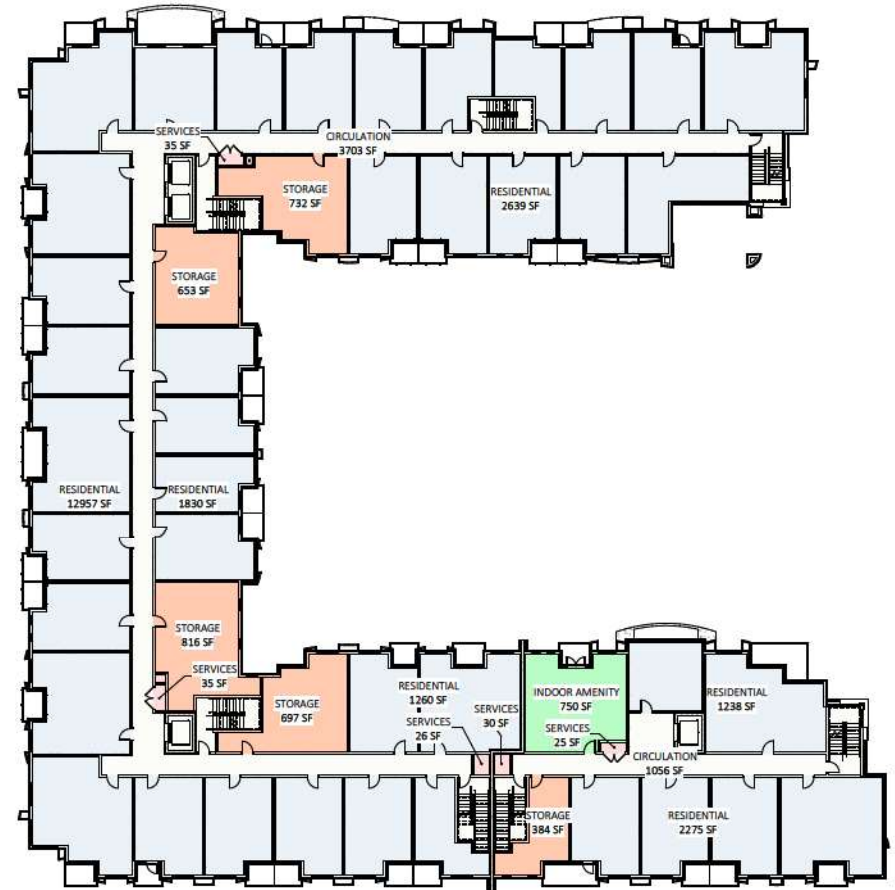
SD1.14



**1st level**

1/16" = 1'-0"

- AREA EXCLUSION
- CIRCULATION
- INDOOR AMENITY
- OUTDOOR AMENITY
- RESIDENTIAL
- SERVICE ROOMS/SHAFTS



**2nd level**

1/16" = 1'-0"

- AREA EXCLUSION
- CIRCULATION
- INDOOR AMENITY
- RESIDENTIAL
- SERVICE ROOMS/SHAFTS



**WHITETAIL 204 STREET APARTMENTS**  
5360 - 204 STREET, LANGLEY, BC

**FSR PLANS**  
SCALE: N.T.S.



**RE-ISSUED FOR DEVELOPMENT PERMIT**

23/05/29 REVISION #:  
CITY OF LANGLEY FILE #  
PROJECT NUMBER: 21172.1



SD1.15



**3rd to 7th level**

1/16" = 1'-0"

- AREA EXCLUSION
- CIRCULATION
- RESIDENTIAL
- SERVICE ROOMS/SHAFTS



**8th level**

1/16" = 1'-0"

- AREA EXCLUSION
- CIRCULATION
- RESIDENTIAL
- SERVICE ROOMS/SHAFTS



**WHITETAIL 204 STREET APARTMENTS**  
5360 - 204 STREET, LANGLEY, BC

**FSR PLANS**  
SCALE: N.T.S.

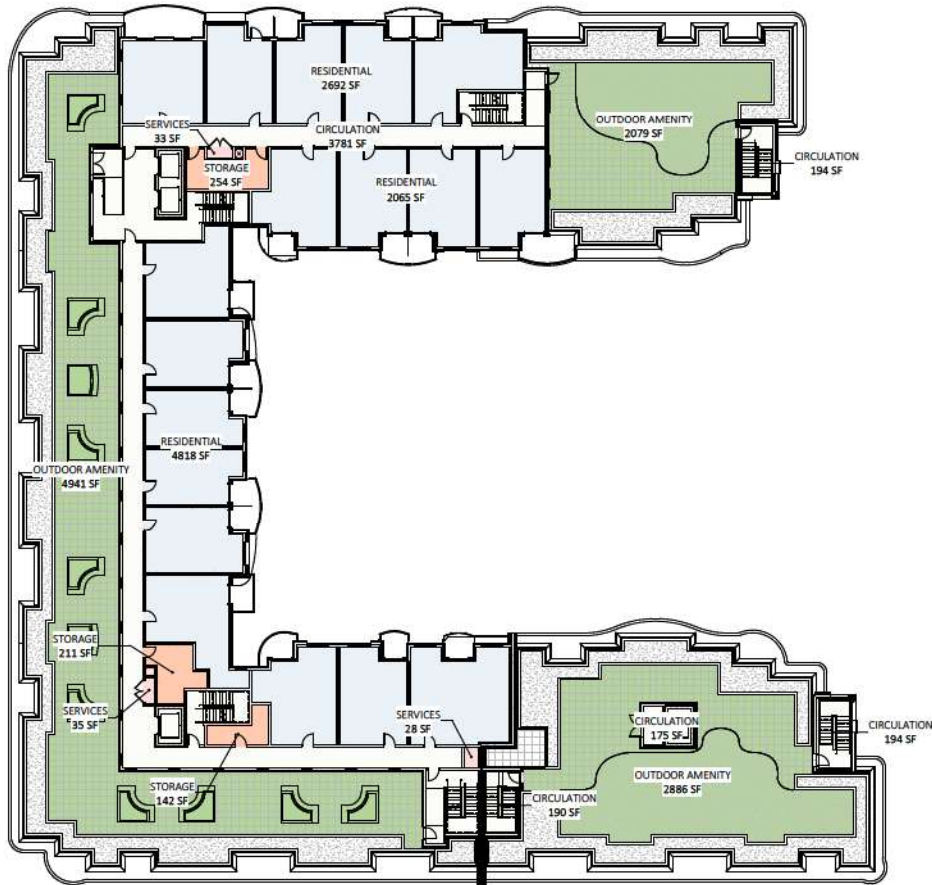


**RE-ISSUED FOR DEVELOPMENT PERMIT**

23/05/29 REVISION #  
CITY OF LANGLEY FILE #  
PROJECT NUMBER: 21172.1



SD1.16



**9th level**

1/16" = 1'-0"

- AREA EXCLUSION
- CIRCULATION
- OUTDOOR AMENITY
- RESIDENTIAL
- SERVICE ROOMS/SHAFTS



**10th level**

1/16" = 1'-0"

- AREA EXCLUSION
- CIRCULATION
- RESIDENTIAL
- SERVICE ROOMS/SHAFTS



**WHITETAIL 204 STREET APARTMENTS**  
5360 - 204 STREET, LANGLEY, BC

**FSR PLANS**  
SCALE: N.T.S.

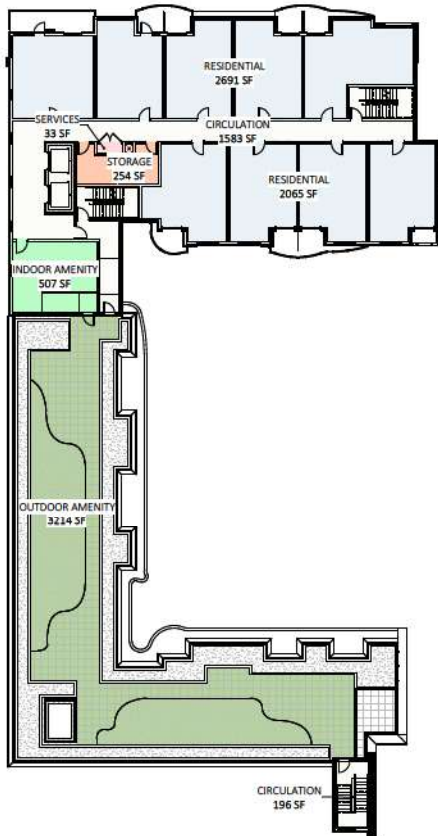


**RE-ISSUED FOR DEVELOPMENT PERMIT**

23/05/29 REVISION #  
CITY OF LANGLEY FILE #  
PROJECT NUMBER: 21172.1



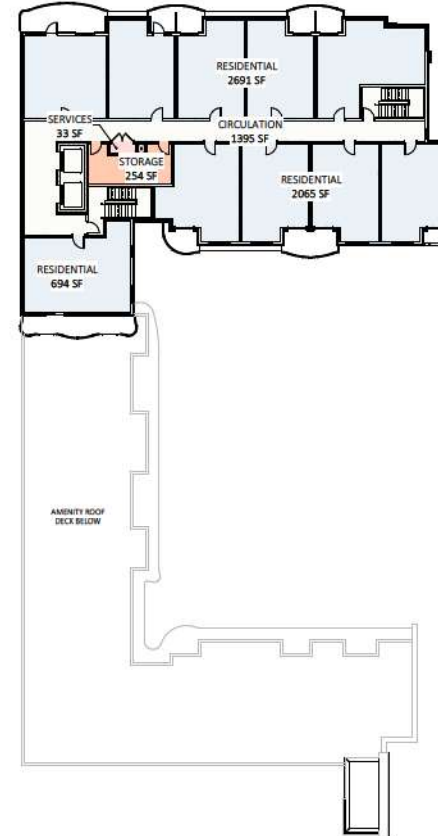
SD1.17



**11th level**

1/16" = 1'-0"

- AREA EXCLUSION
- CIRCULATION
- INDOOR AMENITY
- OUTDOOR AMENITY
- RESIDENTIAL
- SERVICE ROOMS/SHAFTS



**12th level**

1/16" = 1'-0"

- AREA EXCLUSION
- CIRCULATION
- RESIDENTIAL
- SERVICE ROOMS/SHAFTS



**WHITETAIL 204 STREET APARTMENTS**  
5360 - 204 STREET, LANGLEY, BC

**FSR PLANS**  
SCALE: N.T.S.



**RE-ISSUED FOR DEVELOPMENT PERMIT**  
23/05/29 REVISION #:  
CITY OF LANGLEY FILE #:  
PROJECT NUMBER: 21172.1



SD1.18

## design rationale

### project description

THIS PROPOSED DEVELOPMENT ON 204TH ST IN THE CITY OF LANGLEY IS COMPRISED OF FOUR STACKED MASSES – ONE 12-STOREY, ONE 10-STOREY AND TWO 8-STOREY – OF STEEL FRAME NON-COMBUSTIBLE CONSTRUCTION HOUSING A TOTAL 370 UNITS OF MULTI-FAMILY RESIDENTIAL OCCUPANCY, OVER A 2-LEVEL CONCRETE PARKADE COVERING THE ENTIRE SITE. THE FOUR MASSES ARE ARRANGED TO DEFINE A LANDSCAPED INTERIOR COURTYARD PROVIDING AMPLE OUTDOOR AMENITY SPACE FOR THE OVERALL DEVELOPMENT.

### massing, form & character

THE SITING AND MASSING OF THE BUILDINGS WITHIN THIS DEVELOPMENT IS DESIGNED TO ALLOW NATURAL LIGHT INTO THE COURTYARD AND MAINTAIN A VISUAL CONNECTION FOR AS MANY RESIDENTS AS POSSIBLE WHILE ALSO OFFERING CONSIDERABLE SEPARATION TO MAINTAIN PRIVACY.

THE DISTINCT MASSES SERVE TO BREAK DOWN THE OVERALL PRESENCE OF THE DEVELOPMENT WHILE THE CURVILINEAR ARTICULATION OF THE FACADES SERVES TO FURTHER SOFTEN THE PERCEPTION. A STRONG TWO-STOREY BASE OF MASONRY, ALSO IN CURVILINEAR FORM, BRINGS THE SOFTNESS DOWN TO STREET LEVEL WHERE IT CAN BE FURTHER APPRECIATED BY PASSERS-BY AT A MORE INTIMATE SCALE.

ON A HIGHLY CONCEPTUAL LEVEL THE MASSES OF THE BASE ARE AN ARCHITECTURAL INTERPRETATION OF WHAT WE SEE AS THE REMNANTS OF OLD GROWTH IN THE FORESTS OF THE WEST COAST – THE MASSIVE STUMPS FORMING THE BASE FOR NEW GROWTH – SUPPORTING A NEW CANOPY OF SOFTER, AIRIER FOLIAGE.

USE OF SOME REFLECTIVE MATERIALS AND SOFTER COLOURS AT THE UPPER LEVELS ALSO LEND TO PERCEIVED AIRINESS OF THE BUILDING FACADES ALONG THE STREET FACES IN PARTICULAR, CREATING VISUAL INTEREST FOR MOTORISTS, TRANSIT COMMUTERS AND PEDESTRIANS EXPERIENCING THE SITE.

THE STRONG BASE OF ARTICULATED MASONRY FUNCTIONS AT A HUMAN SCALE FOR PEDESTRIANS MOVING ALONG THE MAIN STREETS AND ADJACENT LANEWAYS ENJOYING A STREET-FRIENDLINESS AND ACHIEVE A STRONG SENSE OF BELONGING AND WALKABILITY AROUND THE DEVELOPMENT.

ON A TECHNICAL LEVEL THE FIVE MASSES REPRESENT ONLY TWO BUILDINGS, EACH WITH ITS OWN INDIVIDUAL MAIN ENTRANCE FROM WHICH ALSO SERVES AS THE MAIN FIREFIGHTING ACCESS FOR EACH. PARKING FOR VISITORS IS PROVIDED IN THE COURTYARD ALONG WITH SECURE VISITOR PARKING IN THE UNDERGROUND PARKADE.

MATERIALS CONSIST OF A BLEND OF BRICK VENEER, METAL PANEL, CEMENTITIOUS AND COMPOSITE BOARD CLADDING. OTHER FEATURES INCLUDE VEGETATED STREET-ORIENTED PATIOS AND TERRACES, LANDSCAPED FEATURES AND LARGE ROOFTOP AMENITY SPACES, AND LARGE INDOOR AND MULTI-USE EXTERIOR AMENITY AREAS.

### environmental sustainability

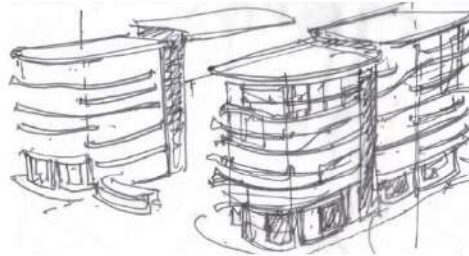
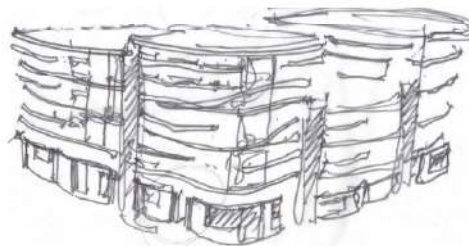
ADDRESSED WITHIN THE DEVELOPMENT BY THE PROVISION OF BIKE RACKS AND BIKE STORAGE, LARGE OPEN GREEN SPACES, LIGHT POLLUTION REDUCTION BY MEANS OF DARK SKY COMPLIANT EXTERIOR LIGHTING SYSTEMS, WATER EFFICIENT LANDSCAPING AND PLUMBING SYSTEMS, NATURAL VENTILATION THROUGH OPERABLE WINDOWS AND ENERGY EFFICIENT HVAC SYSTEMS, STORAGE AND COLLECTION OF RECYCLABLES, AND HEAT ISLAND EFFECT REDUCTION THROUGH MINIMIZING EXTERIOR PARKING AND INCORPORATING LIGHT COLOURED ROOFING FINISHES.

### crime prevention

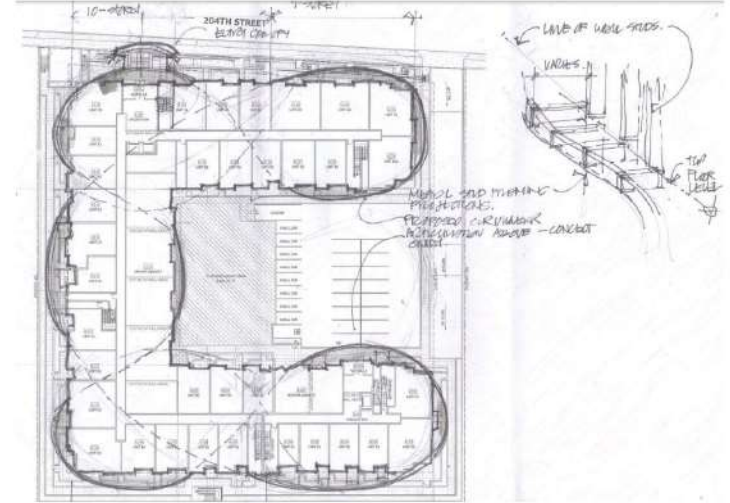
ENVIRONMENTAL DESIGN PRINCIPLES (EDPTD) HAVE BEEN INCORPORATED INTO THE DESIGN BY MEANS OF NATURAL SURVEILLANCE THROUGHOUT THE PERIMETER, INTERIOR COURTYARDS AND PARKADE LEVELS BY MEANS OF CLEAR VIEWING LINES FROM THE RESIDENTIAL UNITS AND BALCONIES. ELIMINATION OF POTENTIAL DARK AREAS AT ACCESSES/EXITS, CLEARLY DEFINED MAIN ENTRANCES AND SECURE AND FULLY ACCESSIBLE PARKING. SECURE POINTS ARE WELL-DEFINED AND MONITORED BY CAMERA AND A SECURE ACCESS SYSTEM.



south-west sketch perspective



massing studies



concept of proposed curvilinear projections



west sketch elevation



WHITETAIL 204 STREET APARTMENTS  
5360 - 204 STREET, LANGLEY, BC

DESIGN RATIONALE  
SCALE: N.T.S.

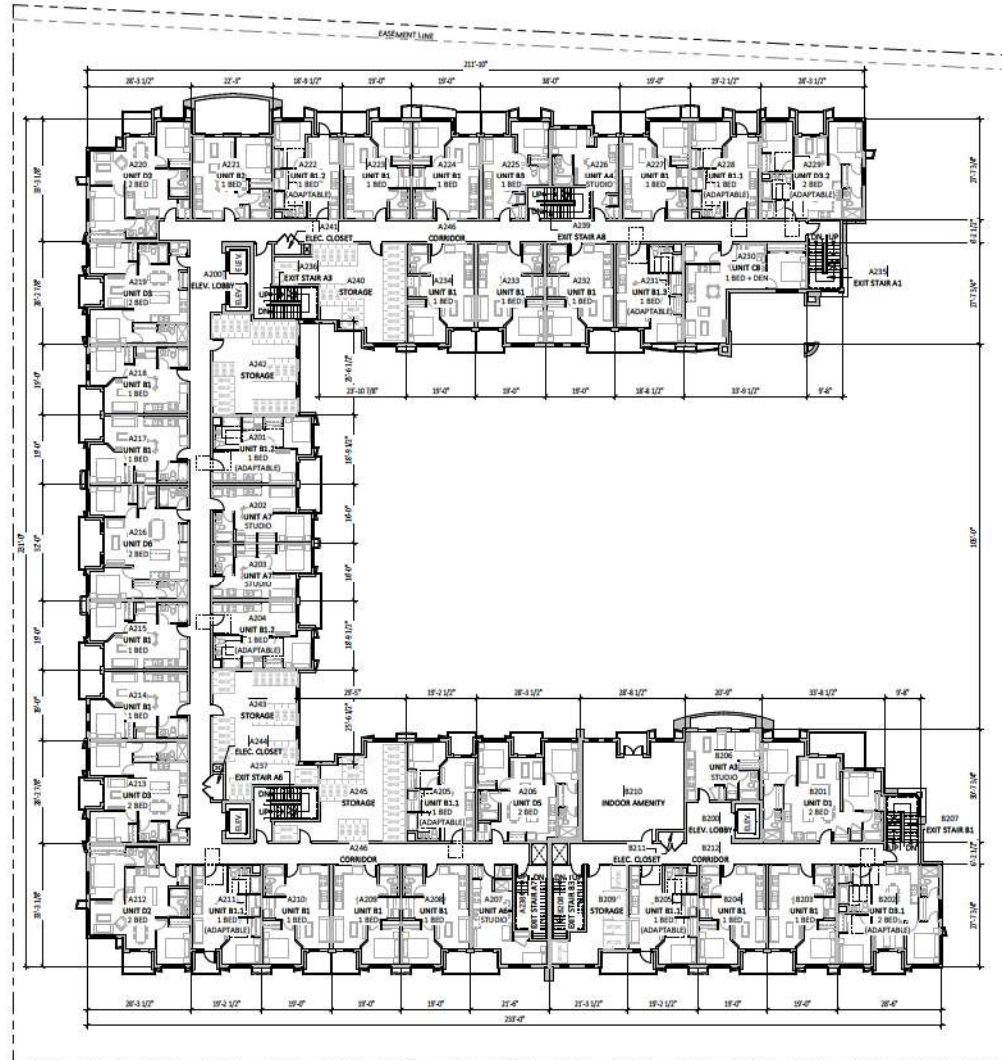
RE-ISSUED FOR DEVELOPMENT PERMIT  
23/05/20 REVISION #  
CITY OF LANGLEY FILE #  
PROJECT NUMBER: 21172.1



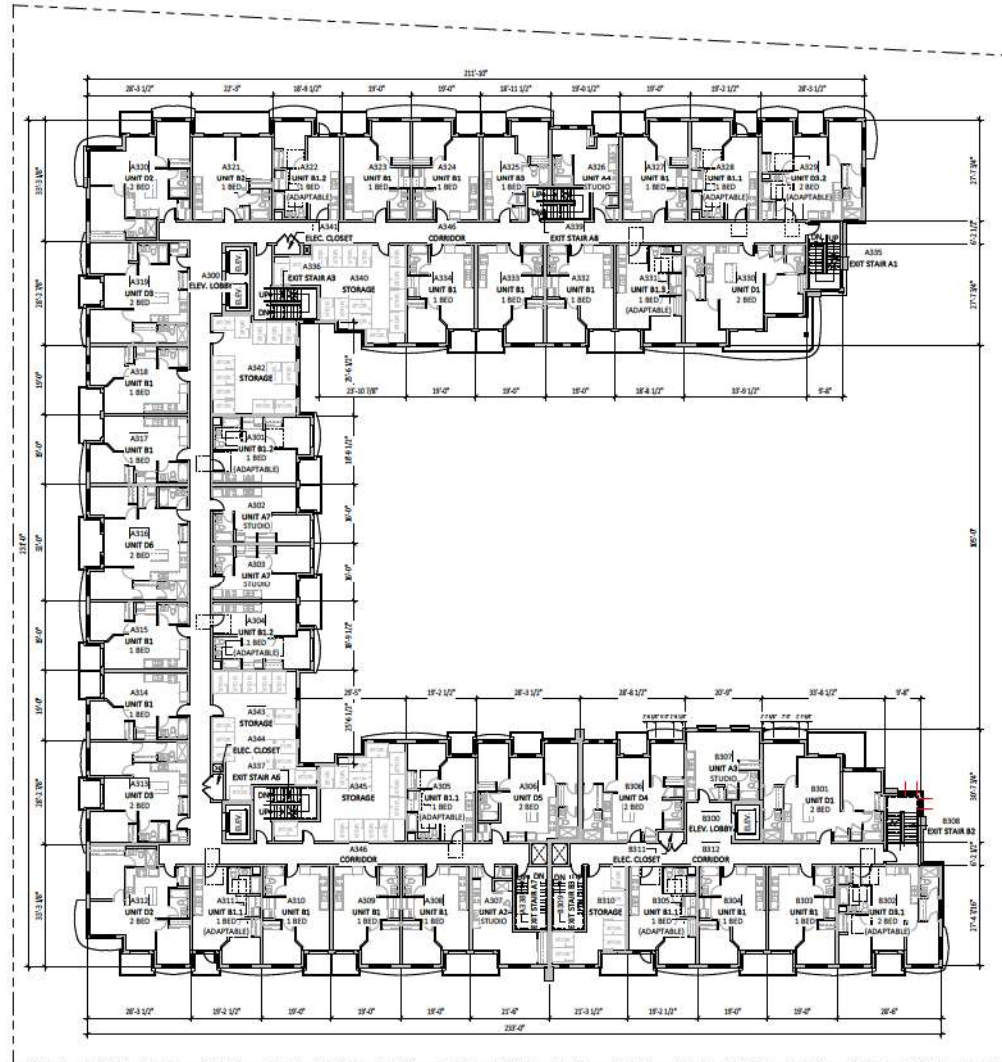
SD1.20







**2nd level**  
1/16" = 1'-0"



**3rd - 7th level**

1/16" = 1'-0"



keystonearch.ca

**WHITETAIL 204 STREET APARTMENTS**

5360 - 204 STREET, LANGLEY, BC

**3RD-7TH LEVEL PLAN**

SCALE: 1/16" = 1'-0"

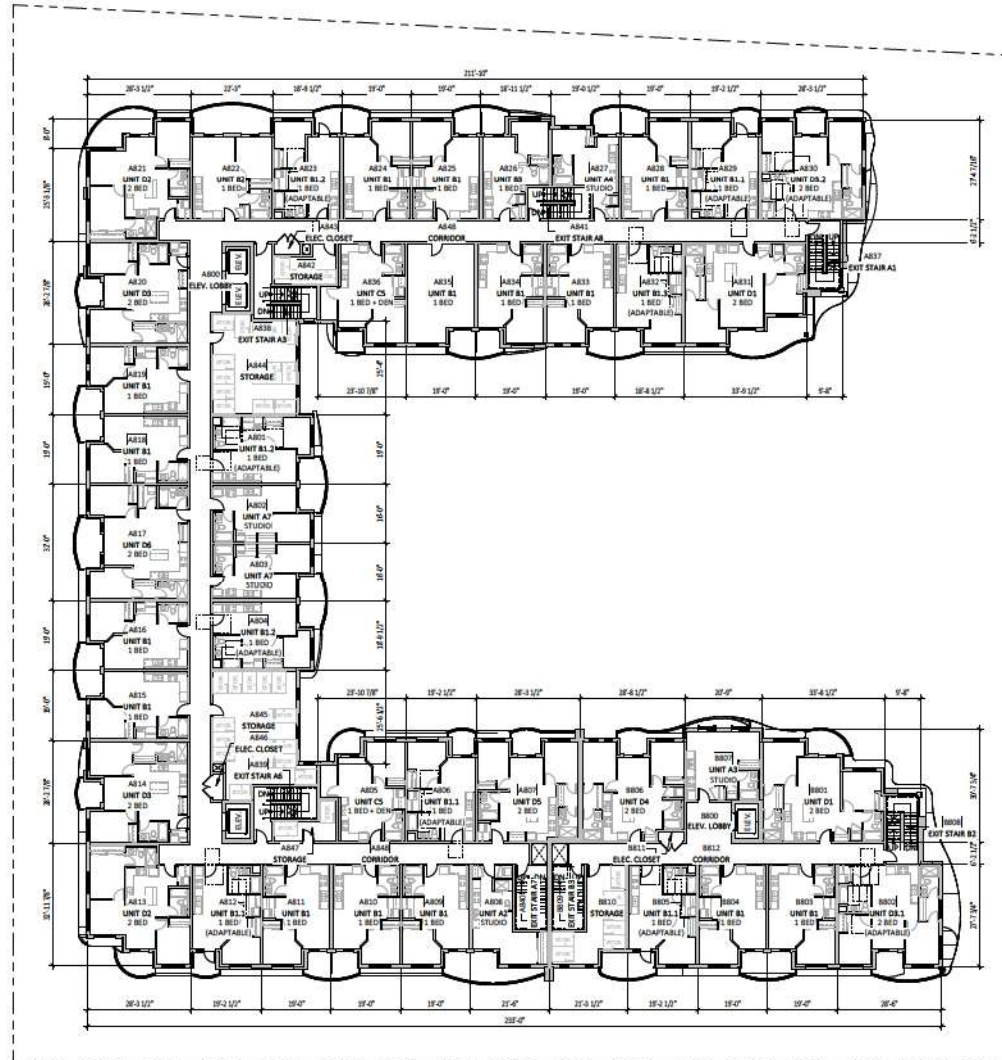


**RE-ISSUED FOR DEVELOPMENT PERMIT**

23/05/23 REVISION #:  
CITY OF LANGLEY FILE #:  
PROJECT NUMBER: 21172.1



SD2.12



**8th level**

1/16" = 1'-0"



**WHITETAIL 204 STREET APARTMENTS**  
5360 - 204 STREET, LANGLEY, BC

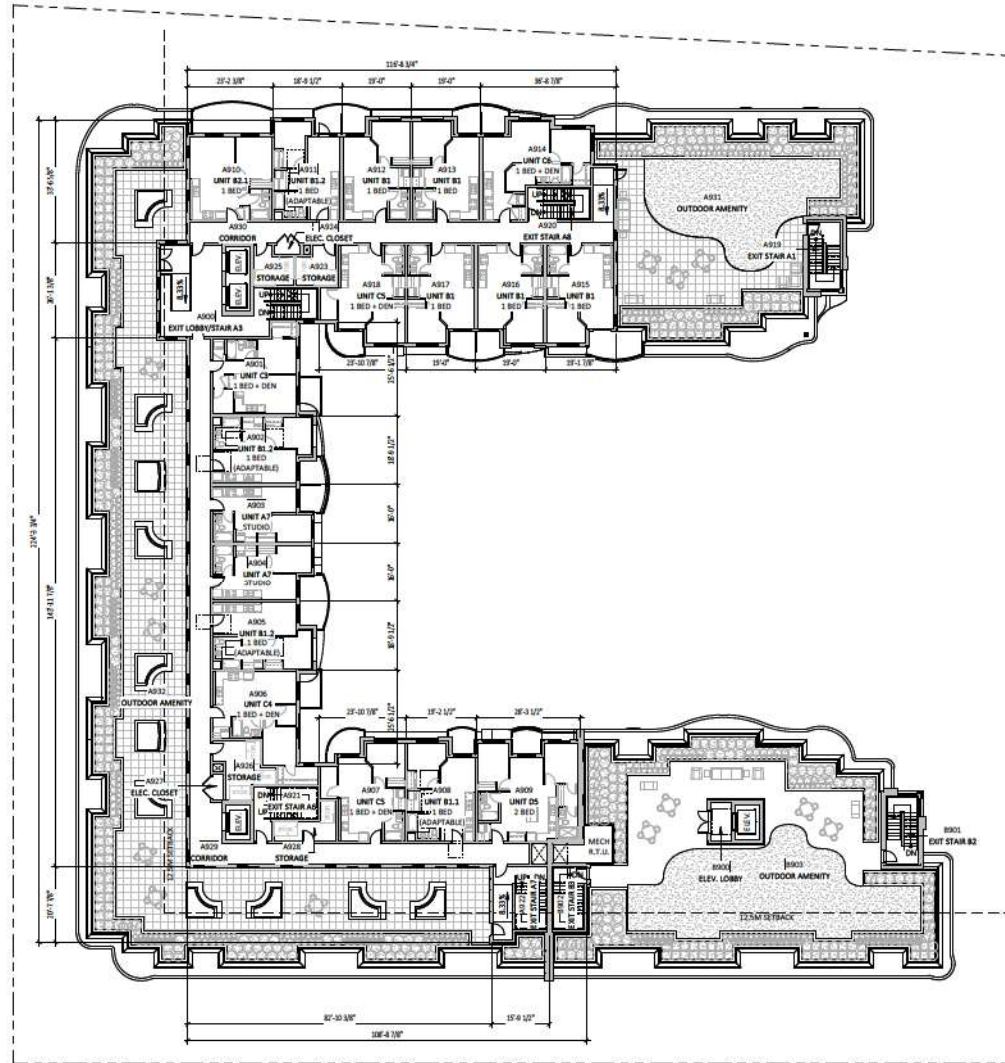
**8TH LEVEL PLAN**  
SCALE: 1/16" = 1'-0"



**RE-ISSUED FOR DEVELOPMENT PERMIT**  
23/05/29 REVISION #  
CITY OF LANGLEY FILE #  
PROJECT NUMBER: 21172.1



SD2.13



**9th level**  
1/16" = 1'-0"



**WHITETAIL 204 STREET APARTMENTS**  
5360 - 204 STREET, LANGLEY, BC

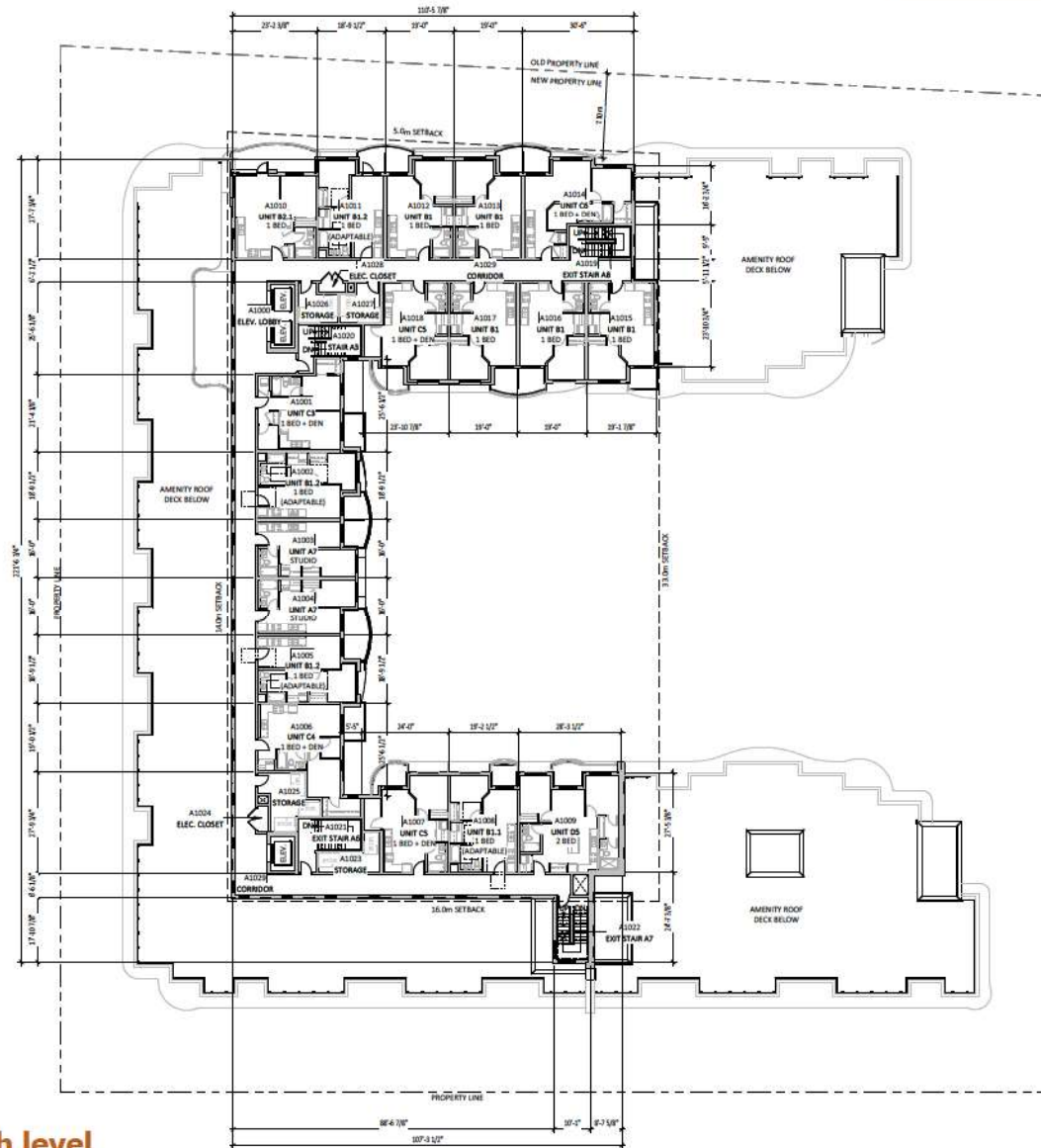
**9TH LEVEL PLAN**  
SCALE: 1/16" = 1'-0"



**RE-ISSUED FOR DEVELOPMENT PERMIT**  
23/05/29 REVISION #  
CITY OF LANGLEY FILE #  
PROJECT NUMBER: 21172.1



SD2.14



**10th level**  
1/16" = 1'-0"



**WHITETAIL 204 STREET APARTMENTS**  
5360 - 204 STREET, LANGLEY, BC

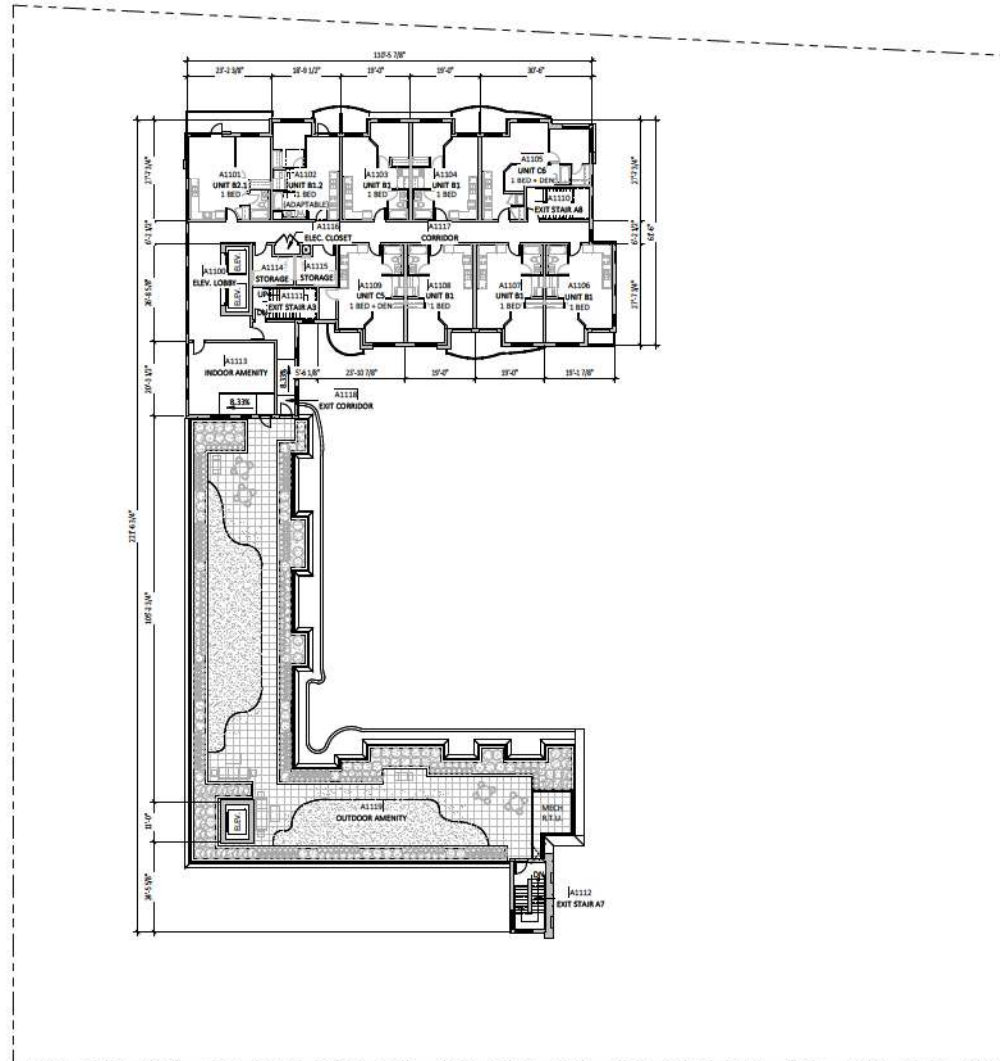
**10TH LEVEL PLAN**  
SCALE: 1/16" = 1'-0"



**RE-ISSUED FOR DEVELOPMENT PERMIT**  
23/05/29 REVISION #:  
CITY OF LANGLEY FILE #  
PROJECT NUMBER: 21172.1

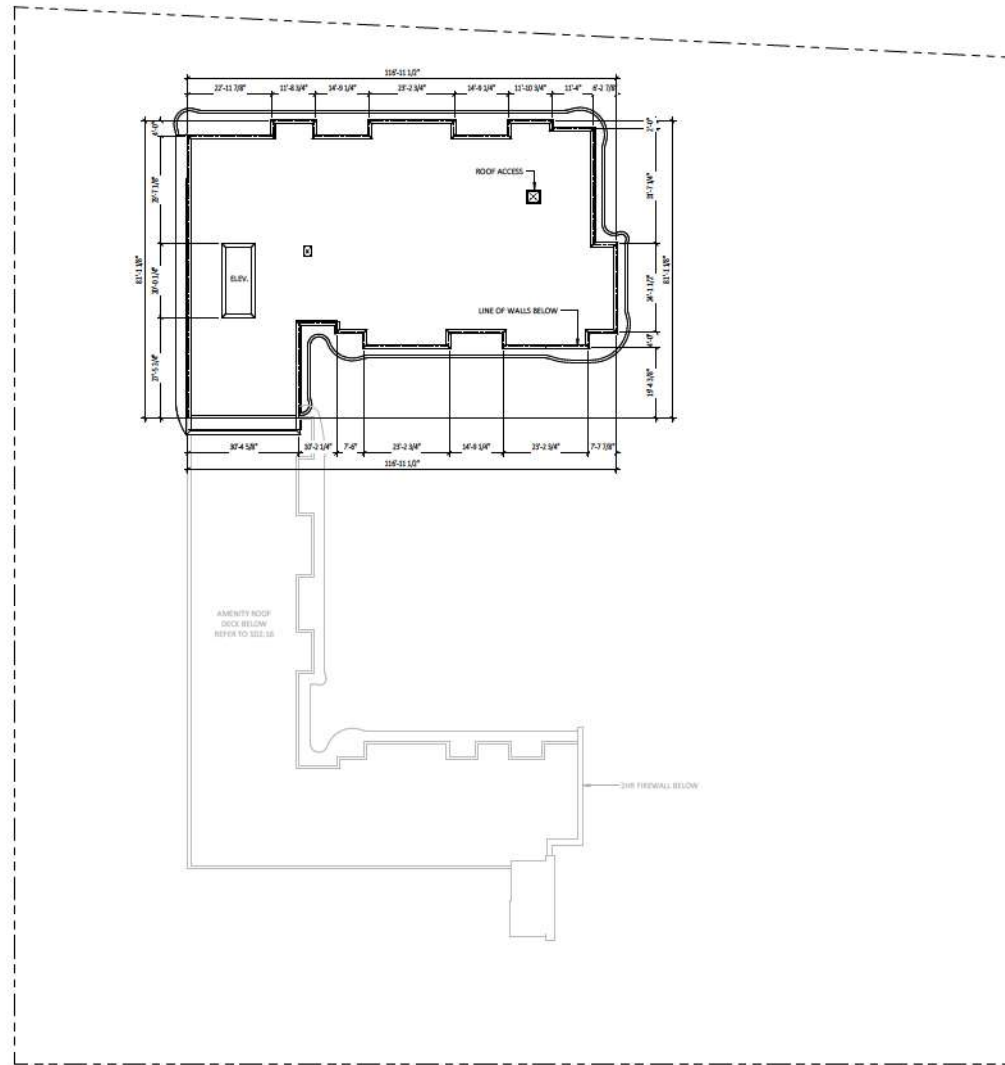


SD2.15



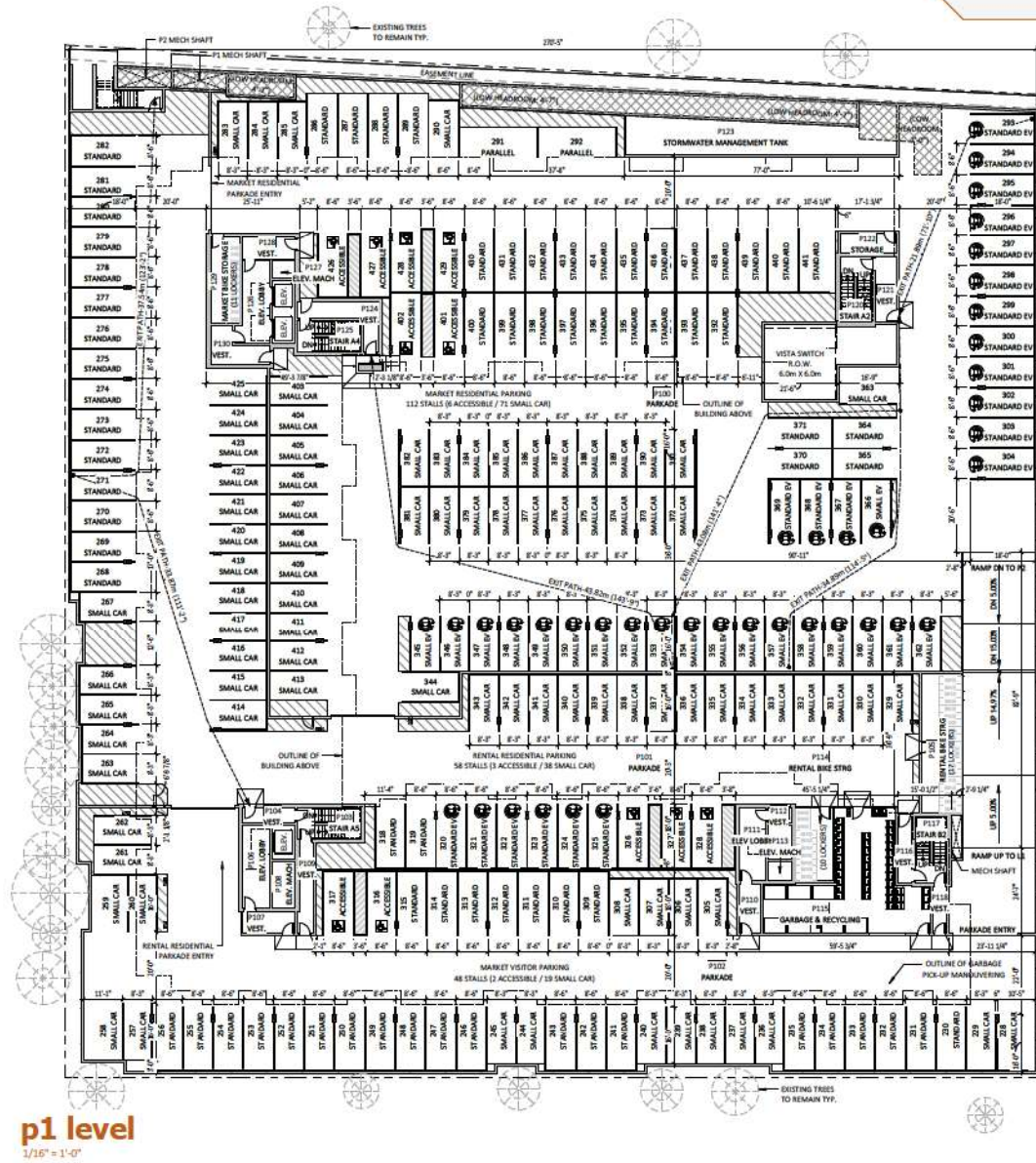
**11th level**  
1/16" = 1'-0"





**roof level**  
1/16" = 1'-0"

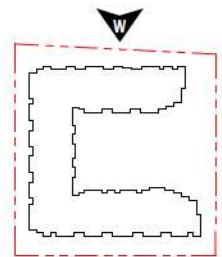


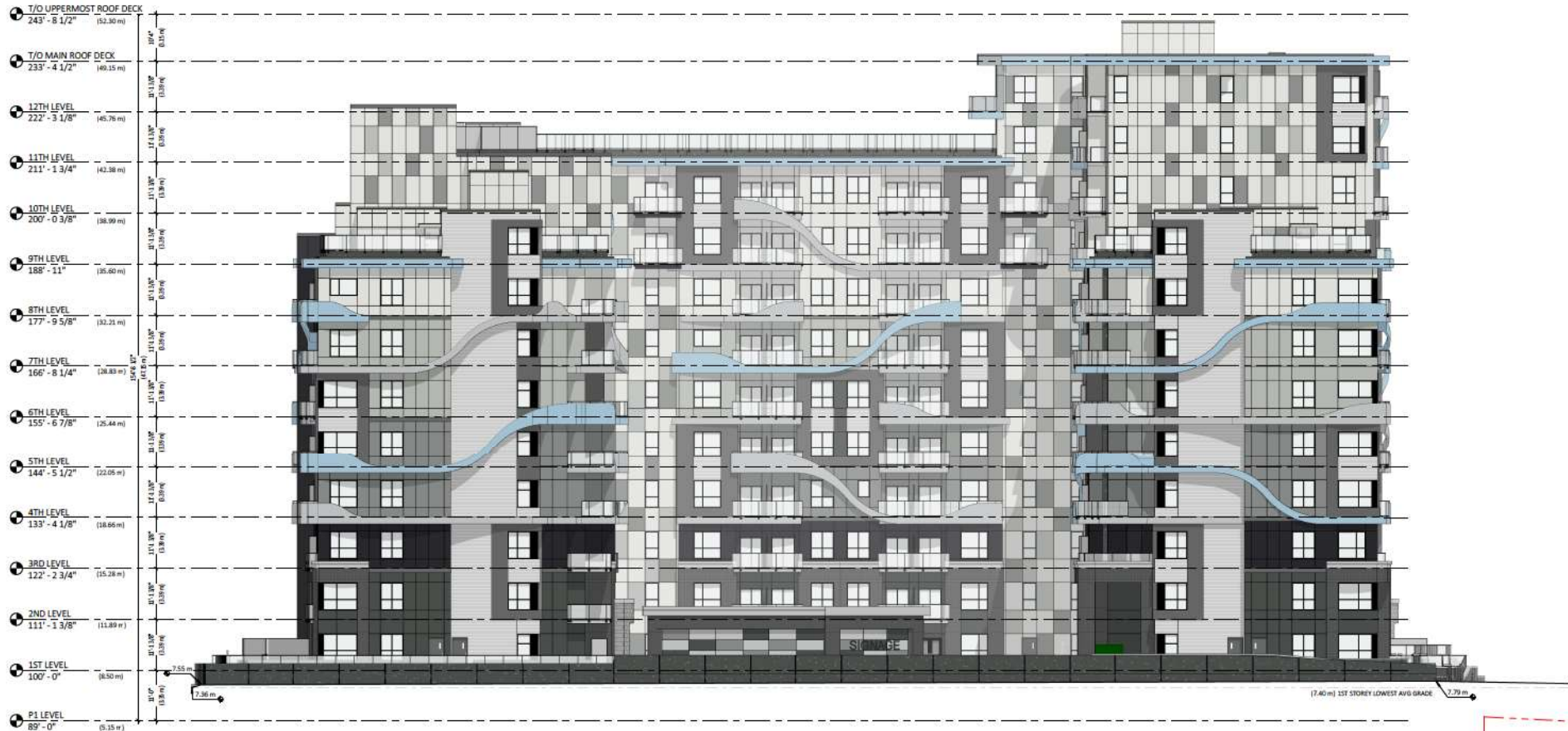


**p1 level**  
1/16" = 1'-0"

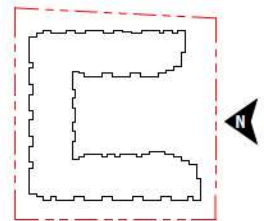


**west elevation**  
3/32" = 1'-0"



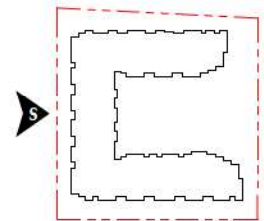


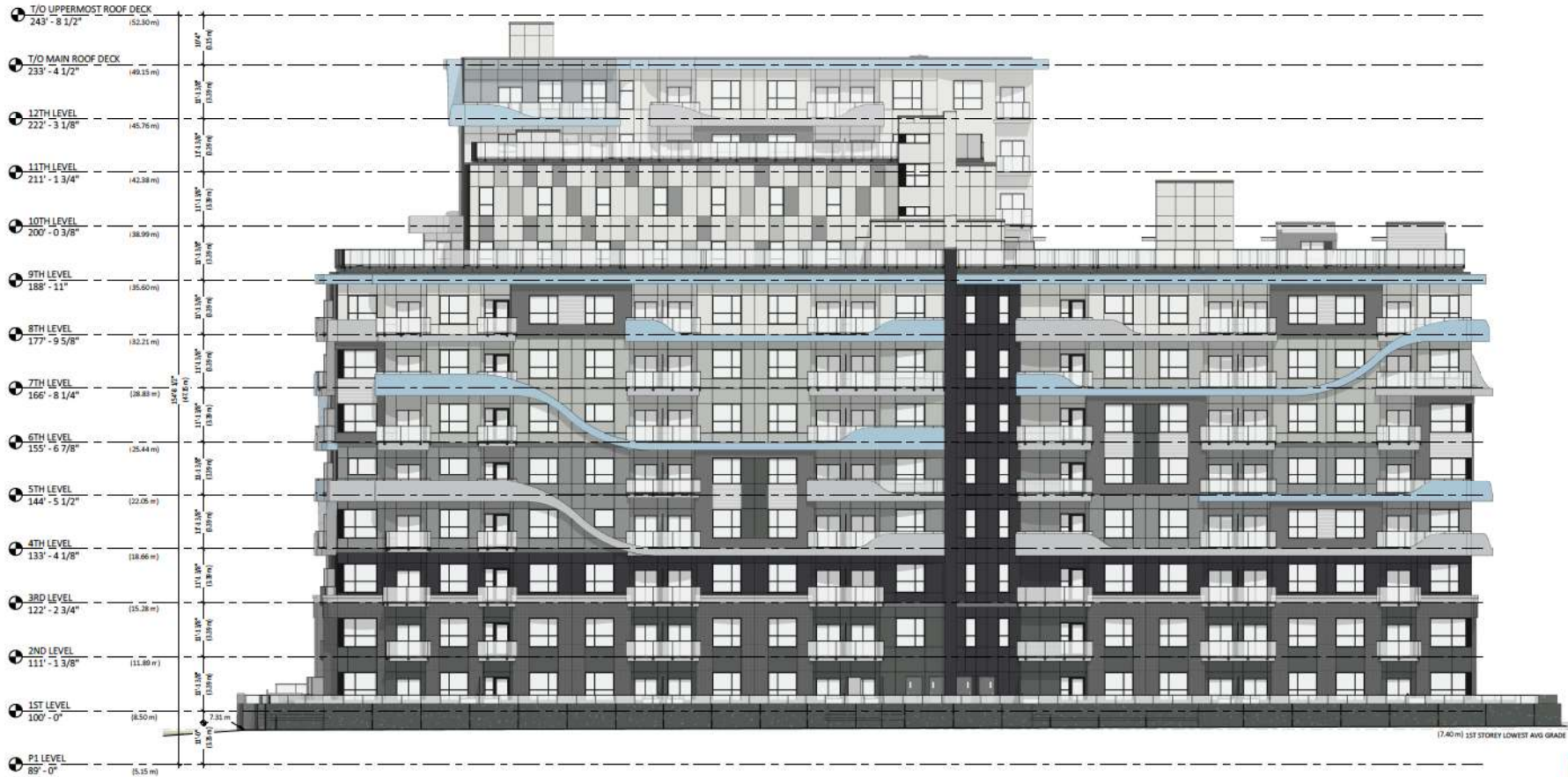
**north elevation**  
3/32" = 1'-0"



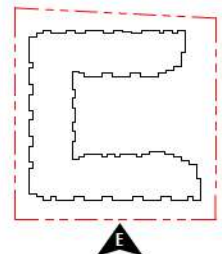


**south elevation**  
3/32" = 1'-0"



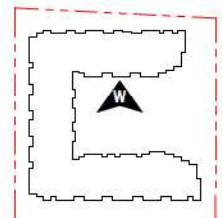


**east elevation**  
3/32" = 1'-0"



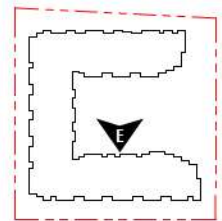


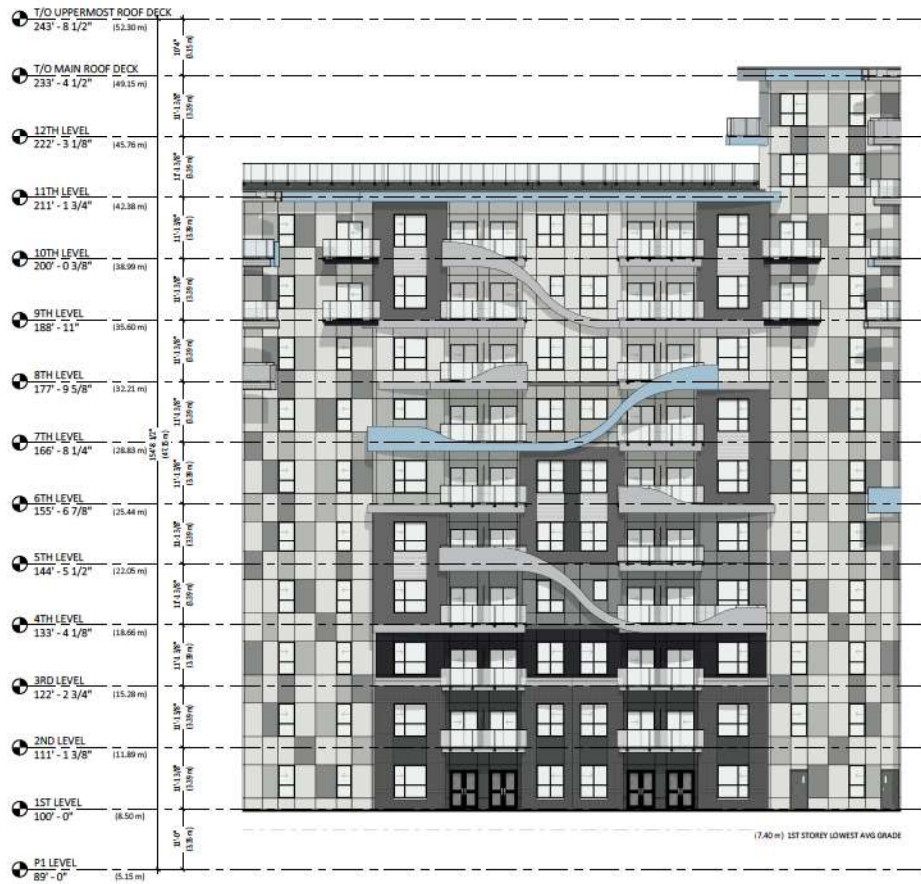
**west interior elevation**  
 3/32" = 1'-0"



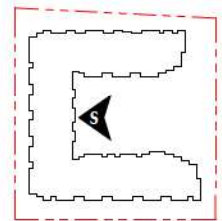


**east interior elevation**  
3/32" = 1'-0"





**south interior elevation**  
3/32" = 1'-0"





west elevation



south elevation



keystonearch.ca

**WHITETAIL 204 STREET APARTMENTS**

5360 - 204 STREET, LANGLEY, BC

**RENDERED ELEVATIONS**

SCALE: N.T.S.

**RE-ISSUED FOR DEVELOPMENT PERMIT**

23/05/29 REVISION #:  
CITY OF LANGLEY FILE #  
PROJECT NUMBER: 21172.1



SD3.10



east elevation



north elevation



keystonearch.ca

**WHITETAIL 204 STREET APARTMENTS**

5360 - 204 STREET, LANGLEY, BC

**RENDERED ELEVATIONS**

SCALE: N.T.S.

**RE-ISSUED FOR DEVELOPMENT PERMIT**

23/05/23 REVISION #:  
CITY OF LANGLEY FILE #  
PROJECT NUMBER: 21172.1



SD3.11



north west perspective



keystonearch.ca

**WHITETAIL 204 STREET APARTMENTS**

5360 - 204 STREET, LANGLEY, BC

**RENDERED PERSPECTIVES**

SCALE: N.T.S.

**RE-ISSUED FOR DEVELOPMENT PERMIT**

23/05/29 REVISION #  
CITY OF LANGLEY FILE #  
PROJECT NUMBER: 21172.1



SD3.14



western streetfront



main entrance



keystonearch.ca

**WHITETAIL 204 STREET APARTMENTS**

5360 - 204 STREET, LANGLEY, BC

**RENDERED PERSPECTIVES**

SCALE: N.T.S.

**RE-ISSUED FOR DEVELOPMENT PERMIT**

23/05/29 REVISION #:  
CITY OF LANGLEY FILE #  
PROJECT NUMBER: 21172.1



SD3.15



north west rooftop amenity



south east rooftop amenity



keystonearch.ca

**WHITETAIL 204 STREET APARTMENTS**

5360 - 204 STREET, LANGLEY, BC

**RENDERED PERSPECTIVES**

SCALE: N.T.S.

**RE-ISSUED FOR DEVELOPMENT PERMIT**

23/05/23 REVISION #:  
CITY OF LANGLEY FILE #  
PROJECT NUMBER: 21172.1



SD3.16



**WHITETAIL 204 STREET APARTMENTS**  
5360 - 204 STREET, LANGLEY, BC

**MATERIAL BOARD**  
SCALE: N.T.S.

**RE-ISSUED FOR DEVELOPMENT PERMIT**  
23/05/23 REVISION #:  
CITY OF LANGLEY FILE #  
PROJECT NUMBER: 21172.1



SD4.01



**204th streetscape**

3/32" = 1'-0"



keystonearch.ca

**WHITETAIL 204 STREET APARTMENTS**

5360 - 204 STREET, LANGLEY, BC

**STREETSCAPES**

SCALE: 3/32" = 1'-0"

**RE-ISSUED FOR DEVELOPMENT PERMIT**

23/05/29 REVISION #:  
CITY OF LANGLEY FILE #  
PROJECT NUMBER: 21172.1

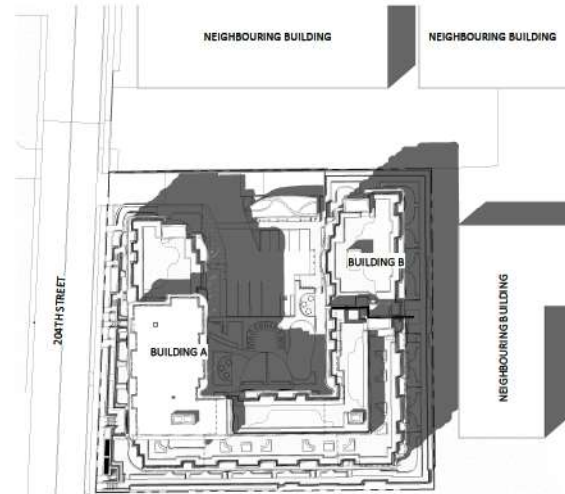


SD5.01



march 21-3pm

1" = 50'-0"



june 21 - 3 pm

1" = 50'-0"



september 21 - 3 pm

1" = 50'-0"



december 21 - 3 pm

1" = 50'-0"



**WHITETAIL 204 STREET APARTMENTS**  
5360 - 204 STREET, LANGLEY, BC

**SHADOW STUDY**  
SCALE: 1" = 50'-0"



**RE-ISSUED FOR DEVELOPMENT PERMIT**

23/05/29 REVISION #  
CITY OF LANGLEY FILE #  
PROJECT NUMBER: 21172.1



SD5.10

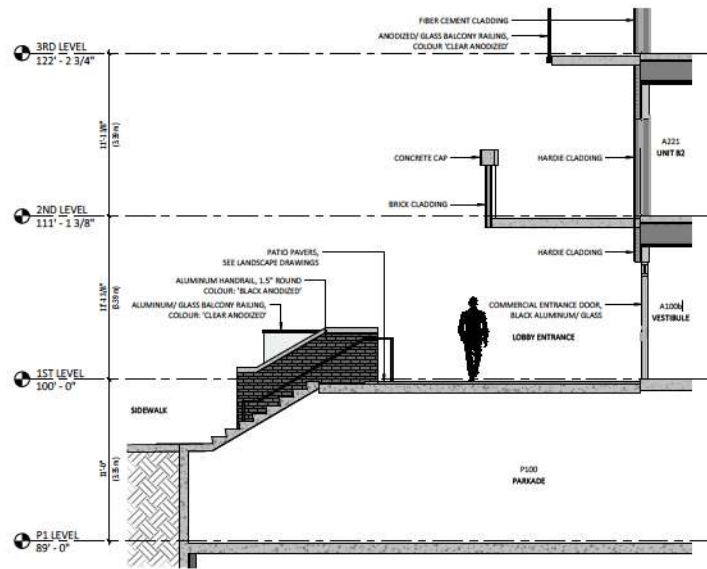




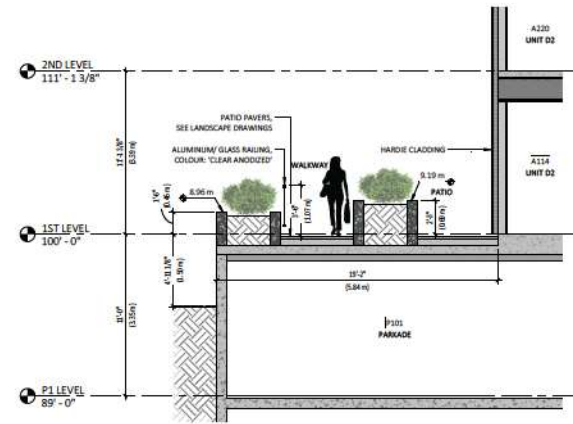
w/e site section  
3/32" = 1'-0"

OCCUPANCY USE

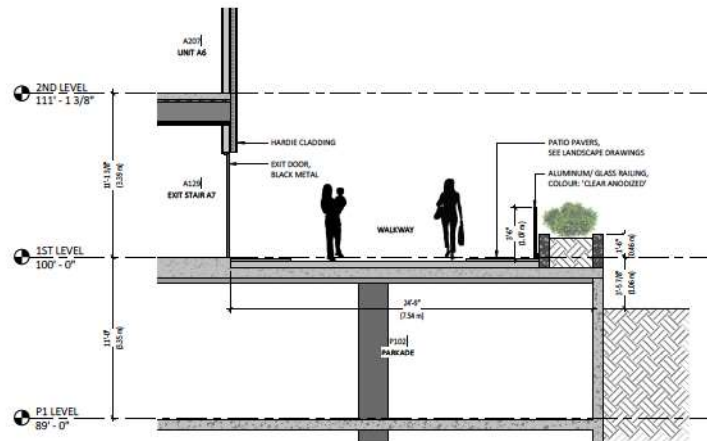
- GROUP C - ASSEMBLY NON FXED SEATS
- GROUP C - RESIDENTIAL
- GROUP C - RESIDENTIAL DWELLING UNIT
- GROUP F3 - INDUSTRIAL STORAGE GARAGES



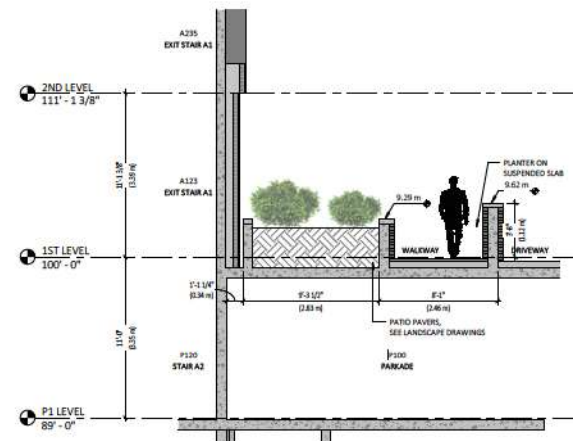
**west main entry section**  
1/4" = 1'-0"



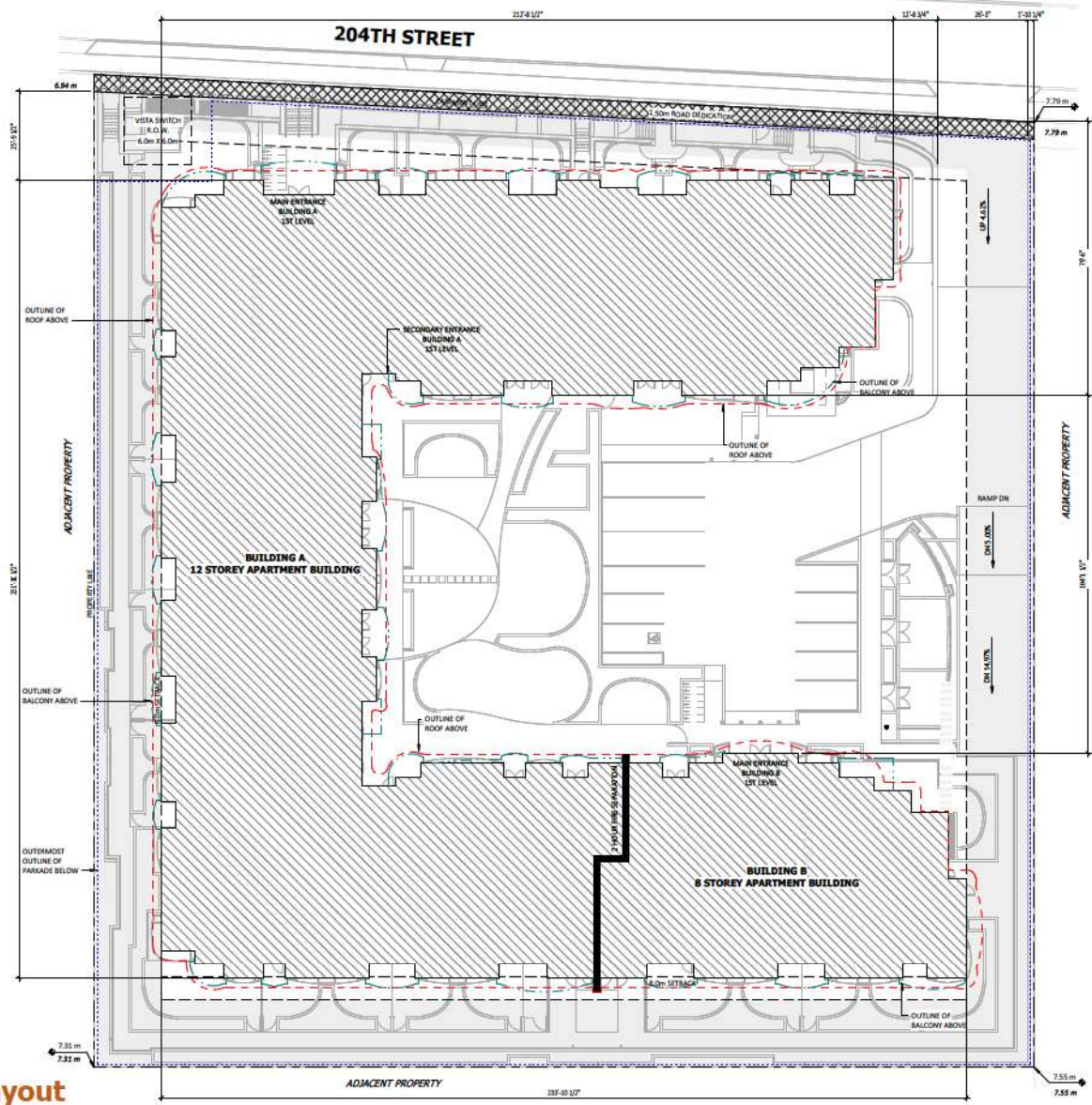
**south planter section**  
1/4" = 1'-0"



**east walkway section**  
1/4" = 1'-0"



**north planter section**  
1/4" = 1'-0"



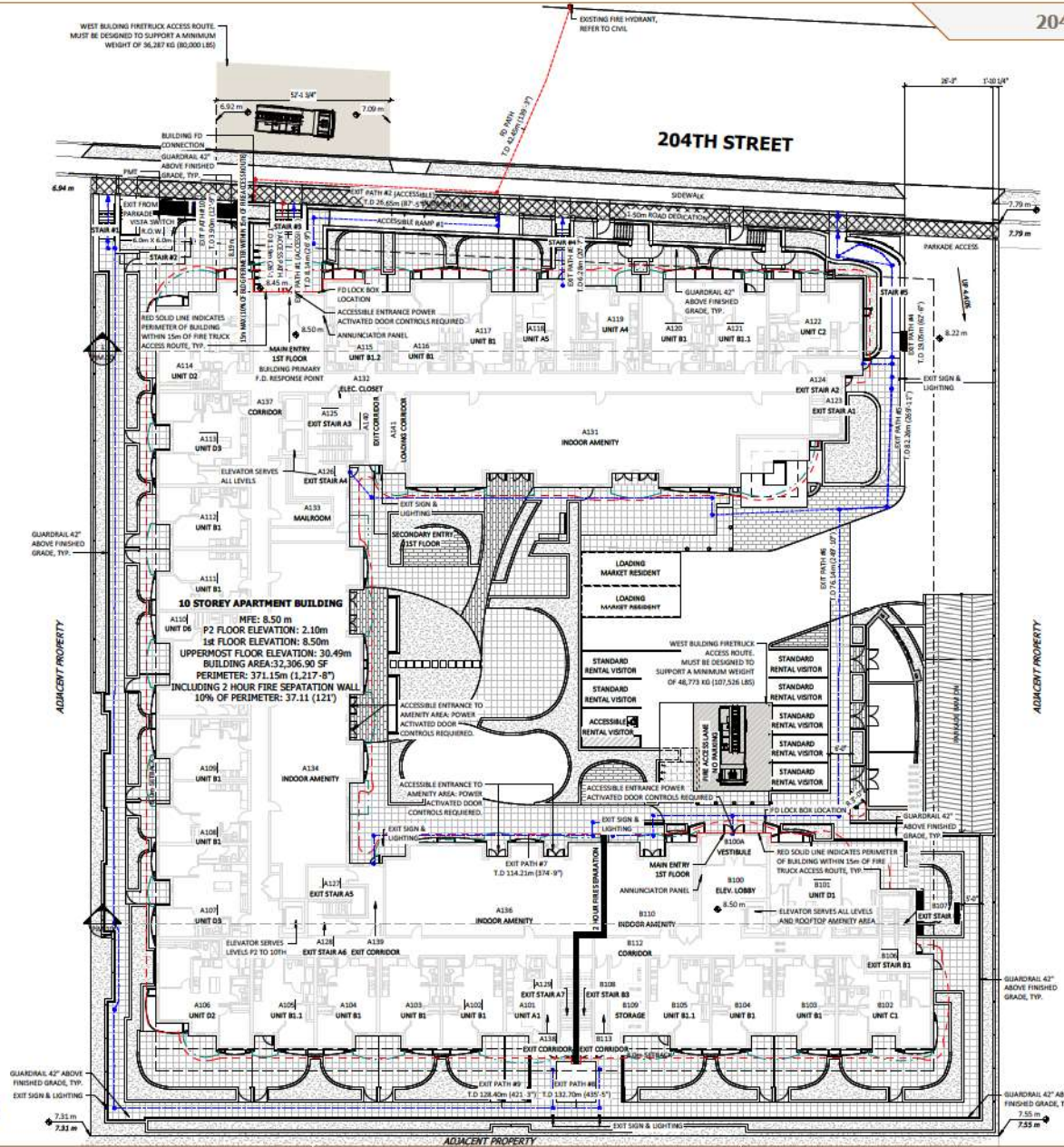
**0.8.1 site layout plan notes/legend**

LEGEND	
	PROPERTY LINE
	OUTLINE OF PARKADE
	OUTLINE OF ROOF ABOVE
	OUTLINE OF BALCONY ABOVE
	SETBACK
	BUILDING FOOTPRINT

1. REFER TO LEGAL SURVEY PLAN, COMPLETED BY (SAAK, OSMAN & ASSOCIATES ASSOCIATES (DEC. 14, 2021) TO VERIFY ALL SITE INFORMATION.

**site plan-layout**  
1/16" = 1'-0"

LEGAL ADDRESS: LOT 178 DISTRICT LOT 36 GROUP 2, NWD PLAN 53282  
CIVIC ADDRESS: 5360 - 204 STREET, LANGLEY, BC  
P.L.D. # 000-471-976



**signage legend**

S1	STOP
S2	ACCESSIBLE PARKING STALL
S3	ACCESSIBLE ENTRANCE
S4	FIRE LANE-NO PARKING
S5	FIRE LANE-NO PARKING
S6	GARBAGE LOADING ZONE-NO PARKING
S7	DROP-OFF/PICK-UP ONLY
S8	MAXIMUM 10 KPH
S9	PARKADE CLEARANCE 7'-0"

**building floor elevations**

LEVEL	HEIGHT	RELATIVE
UPPERMOST LEVEL ELEVATION	30.49m	122'-0"
1st FLOOR	8.50m	28'-0"
P2 LEVEL	6.50m	21'-0"
P1 LEVEL	5.50m	18'-0"
P0 LEVEL	0.00m	0'-0"

**site code plan**  
1/16" = 1'-0"