



JUN/23	REVISED SITE PLAN ADD COMMENTS	3
JAN/23	REVISED SITE PLAN	2
SEP/22	REVISED SITE PLAN	1.1
DATE	REVISIONS	NO.

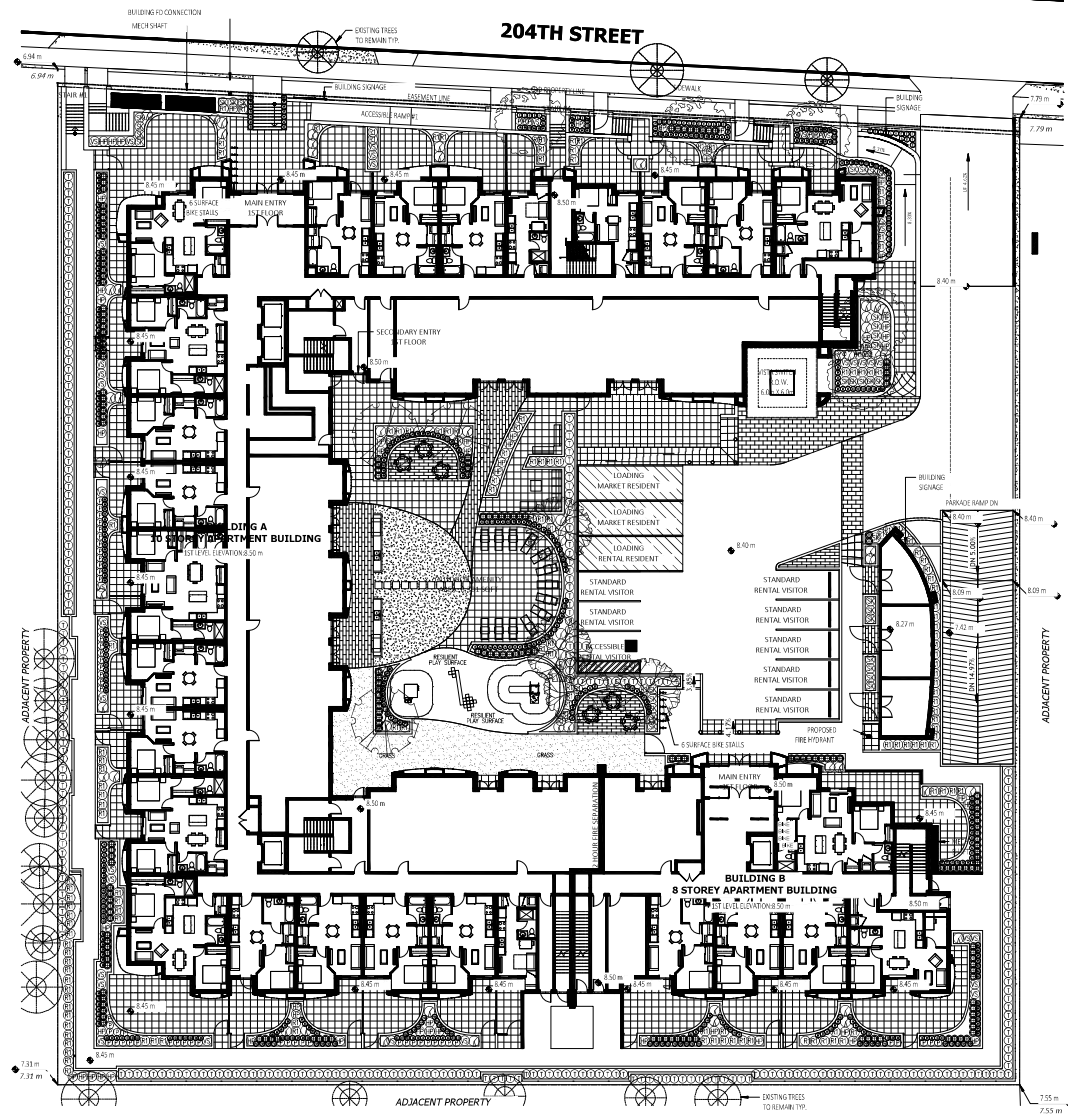
KAVOLINAS & ASSOCIATES INC.
 BOSLA CSLA
 2462 JONGRUI COURT
 ABBOTSFORD, B.C.
 V3C 3E8
 PHONE (604) 857-2376

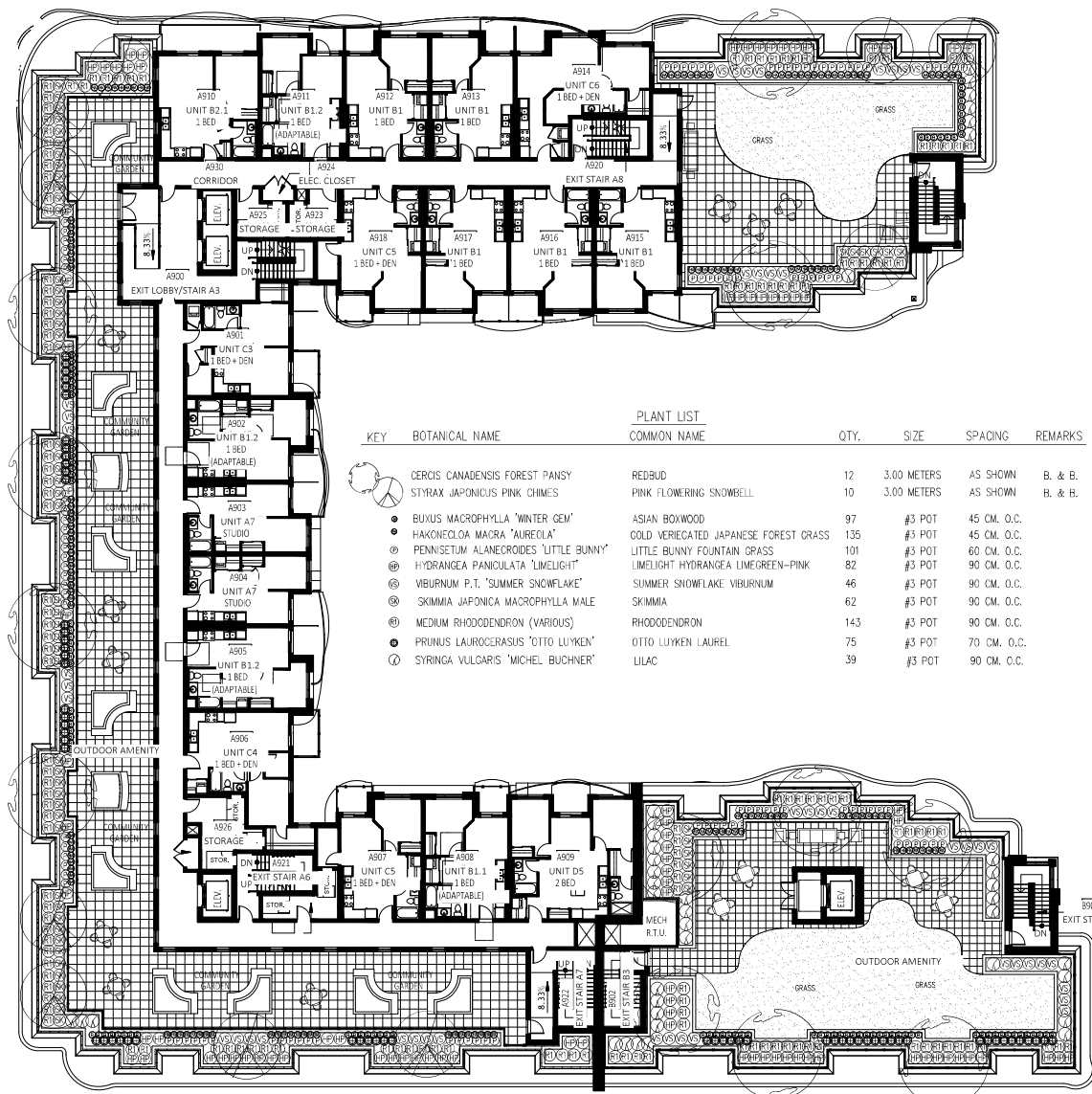
CLIENT
 WHITETAIL HOMES
 GROUP OF COMPANIES
 SUITE 8114
 3550 MT. LEWMAN ROAD
 ABBOTSFORD, B.C.
 V4X 0A1

TITLE
 PLAN VIEW
 LANDSCAPE PLAN
 WHITETAIL
 204 STREET APARTMENT
 5360 - 204 STREET
 LANGLEY, B.C.

SCALE	1:200	DATE	April/22
DRAWN	CHW	CHECKED	CHW
ENGR.	CHW	APPROVED	AS BUILT

PRINTED	JOB No.	
	DRAWING No.	





JUN/23	REVISED SITE PLAN	3
JAN/23	REVISED SITE PLAN	2
SEP/22	REVISED SITE PLAN	1
DATE	REVISIONS	NO.

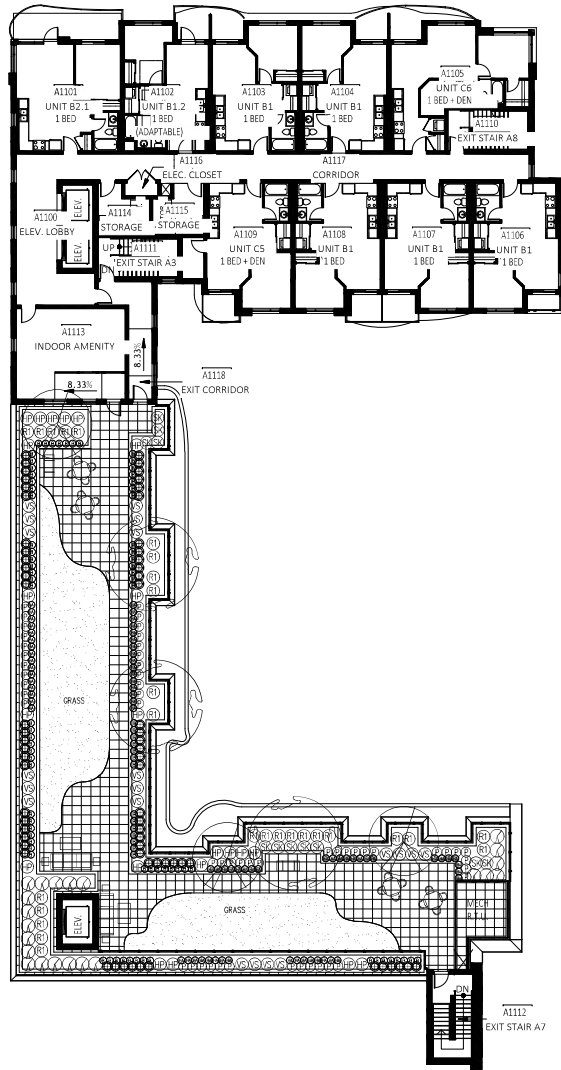
C. KAVOLINAS & ASSOCIATES INC.
 BCALA CSLA
 2462 JONQUIL COURT
 ABBOTSFORD, B.C.
 V3G 3E8
 PHONE (604) 857-2376

CLIENT
 WHITEHALL HOMES
 GROUP OF COMPANIES
 SUITE #104
 3550 MT. LEHMAN ROAD
 ABBOTSFORD, B.C.
 V3G 0A1

TITLE
 PLAN VIEW
 LANDSCAPE PLAN
 ROOFTOP AMENITY AREA
 WHITEHALL
 204 STREET APARTMENT
 536 - 204 STREET
 LANGLEY, B.C.


SCALE	1:150	DATE	AUG/22
DRAWN	DHW	CHECKED	DHW
APPROVED	AS BUILT		

PRINTED JOB NO.
 DRAWING NO.
 L-2A



KEY	BOTANICAL NAME	PLANT LIST		QTY.	SIZE	SPACING	REMARKS
		COMMON NAME					
○	CERCIS CANADENSIS 'FOREST FANSY'	REDBUD		3	3.00 METERS	AS SHOWN	B. & B.
○	STYRAX JAPONICUS 'PINK CHIMES'	PINK FLOWERING SNOWBELL		3	3.00 METERS	AS SHOWN	B. & B.
●	BUXUS MACROPHYLLA 'WINTER GEM'	ASIAN BOXWOOD		65	#3 POT	45 CM. O.C.	
●	HAKONECLOA MACRA 'AUREOLA'	GOLD VERIEGATED JAPANESE FOREST GRASS		72	#3 POT	45 CM. O.C.	
○	PENNISETUM ALANECROIDES 'LITTLE BUNNY'	LITTLE BUNNY FOUNTAIN GRASS		52	#3 POT	60 CM. O.C.	
○	HYDRANGEA PANICULATA 'LIMELIGHT'	LIMELIGHT HYDRANGEA LIMEGREEN-PINK		23	#3 POT	90 CM. O.C.	
○	VIBURNUM P.T. 'SUMMER SNOWFLAKE'	SUMMER SNOWFLAKE VIBURNUM		20	#3 POT	90 CM. O.C.	
○	SKIMMIA JAPONICA MACROPHYLLA MALE	SKIMMIA		16	#3 POT	90 CM. O.C.	
○	MEDIUM RHODODENDRON (VARIOUS)	RHODODENDRON		27	#3 POT	90 CM. O.C.	
○	FRUNUS LAUROCERASUS 'OTTO LUYKEN'	OTTO LUYKEN LAUREL		60	#3 POT	70 CM. O.C.	
○	SYRINGA VULGARIS 'MICHEL BUCHNER'	LILAC		23	#3 POT	90 CM. O.C.	





JUN/23	REVISED SITE PLAN "AP COMMENTS"	3
JUN/23	REVISED SITE PLAN	2
SEP/22	REVISED SITE PLAN	1
DATE	REVISIONS	NO.

C. KAVOLINAS & ASSOCIATES INC.
BCSLA CSLA
2402 JONCOUL COURT
ABBOTSFORD, B.C.
V3G 3C8
PHONE (604) 857-2376

CLIENT
WHITE TAIL HOMES
GROUP OF COMPANIES
SUITE #04
3550 MT. LEHMAN ROAD
ABBOTSFORD, B.C.
V4Y 0A1

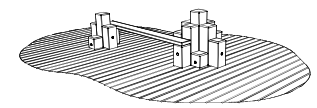
FILE
PLAN VIEW
LANDSCAPE PLAN
2nd FLOOR AMENITY AREA
WHITE TAIL
204 SIRILEY AVENUE
256 - 258 STREET
LANGLEY, B.C.

SCALE 1:150	DATE AUG/22
DRAWN	CHKD
INCH	FEET
APP'D	AS BUILT

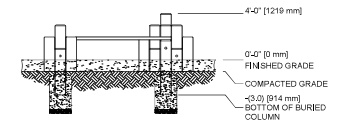
PRINTED	JOB NO.
	DRAWING NO.
L-2	

KEY	BOTANICAL NAME	PLANT LIST COMMON NAME	QTY.	SIZE	SPACING	REMARKS
	CORNUS RUBRUM 'SCARLET FIRE'	SCARLET FIRE DOGWOOD	5	5 CM. CAL.	AS SHOWN	B. & B.
	ACER CIRCINATUM	VINE MAPLE	3	5 CM. CAL.	AS SHOWN	B. & B.
	MAGNOLIA GRANDIFLORA 'LITTLE GEM'	DWARF SOUTHERN MAGNOLIA	4	5 CM. CAL.	AS SHOWN	B. & B.
	BUXUS MACROPHYLLA 'WINTER GEM'	ASIAN BOXWOOD	425	#3 POT	45 CM. O.C.	
	HAKONEGLA MACRA 'AURODLA'	GOLD VERIEGATED JAPANESE FOREST GRASS	46	#2 POT	45 CM. O.C.	
	EJONYMUS JAPONICA 'EMERALD GALETY'	EJONYMUS SILVER VARIEGATED	35	#2 POT	45 CM. O.C.	
	PENNISETUM ALANECROIDES 'LITTLE BUNNY'	LITTLE BUNNY FOUNTAIN GRASS	60	#3 POT	60 CM. O.C.	
	TAXIS x MEDIA HICKSII	HICK'S YEW	266	1.50 METERS	70 CM. O.C.	
	HYDRANGEA PANICULATA 'LIMELIGHT'	LIMELIGHT HYDRANGEA LIMEGREEN-PINK	49	#3 POT	90 CM. O.C.	
	VIBURNUM P.T. 'SUMMER SNOWFLAKE'	SUMMER SNOWFLAKE VIBURNUM	37	#3 POT	90 CM. O.C.	
	SKIMMIA JAPONICA MACROPHYLLA MALE	SKIMMIA	34	#3 POT	90 CM. O.C.	
	MEDIUM RHODODENDRON (VARIOUS)	RHODODENDRON	143	#3 POT	90 CM. O.C.	
	PRUNUS LAUROCERASUS 'OTTO LUYKEN'	OTTO LUYKEN LAUREL	154	#3 POT	70 CM. O.C.	
	SYRINGA VULGARIS 'MICHEL BUCHNER'	LILAC	54	#3 POT	90 CM. O.C.	

COLUMBIA CASCADE
STEPPING COLUMNS
MODEL NO. 4500-502



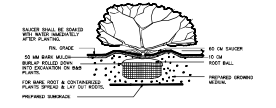
ISOMETRIC VIEW



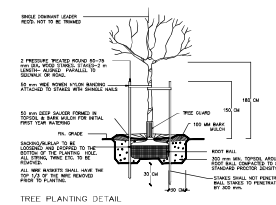
FRONT VIEW

NOTES / GENERAL

- PLANT SIZES IN THIS LIST ARE SPECIFIED ACCORDING TO BC LANDSCAPE STANDARD 1/2017. COMMON CONTAINER SIZES ARE SPECIFIED AS PER 2018 STANDARD. PLANT SIZE AND CONTAINER SIZES ARE THE MINIMUM ACCEPTABLE SIZES. SIZES AND SIZES ARE BASED ON MATERIAL AVAILABLE FOR OPTIMAL REVIEW BY "LANDSCAPE ARCHITECT" AT SOURCE OF SUPPLY. AREA OF SOURCE SHALL BE INDICATED ON DRAWINGS AND "CHECK SIZES" MUST BE OBTAINED WITH APPROVAL FROM THE "LANDSCAPE ARCHITECT" PRIOR TO ORDERING. ANY SUBSTITUTIONS TO SPECIES MATERIAL, UNAPPROVED SUBSTITUTIONS WILL BE REJECTED. ALLOW A MINIMUM OF 14 DAYS PRIOR TO ORDERING FOR REQUEST TO SUBSTITUTE. SUBSTITUTIONS ARE SUBJECT TO "BC LANDSCAPE STANDARD".
- ALL PLANT MATERIAL MUST BE PROVIDED FROM CERTIFIED "SOURCE FIRM" VENDORS. ALL PLANT MATERIAL MUST CONFORM TO THE LATEST EDITION OF THE "BC LANDSCAPE STANDARD" WHERE CERTIFICATION IS REQUIRED. ALL LANDSCAPE AND LANDSCAPE MATERIALS TO CONFORM TO THE LATEST EDITION OF THE "BC LANDSCAPE STANDARD".
- MIN. GROUND COVER DEPTH OVER PREPARED SURFACE SHALL BE:
 - LAWN AREAS: 100 mm
 - DRIVING DRIVE AREAS: 150 mm
 - PAVING AREAS: 100 mm AROUND FOOT WALL
 - SEE DET.
- SHRUBS AND TREES SHALL HAVE PHYSICAL AND CHEMICAL PROPERTIES AS DESCRIBED IN THE STANDARDS FOR IDEAL 2 AND IDEAL 3 AREAS, EXCEPT FOR AREAS AND CONDITIONS WHERE THE DESIGN SHALL CONFORM TO THE REQUIREMENTS FOR IDEAL 1. PHYSICAL, PROTECTIVE AND CHEMICAL PROPERTIES REQUIREMENTS SHALL BE ONE OF THE THREE ACCEPTED. PHYSICAL PROPERTIES: PROPOSED GROUND WATER SHALL BE TESTED BY A LICENSED LABORATORY. THE CONTRACTOR SHALL GUARANTEE THAT THE SOIL QUALITY FOR TESTING IS A REPRESENTATIVE SAMPLE TAKEN FROM THE SITE THAT WILL BE USED AT THE SITE.
- ON-SITE OR IMPORTED SOILS SHALL SATISFY THE REQUIREMENTS OF THE STANDARDS FOR GROUND WATER. SOIL QUALITY TESTS SHALL BE PERFORMED WITH THE FOLLOWING TESTS: PHASE, pH, AND TOXICITY TO PLANTS. "BEST" TESTS SHALL BE PERFORMED ON ORGANIC, TOXIC MATERIALS, TOXES OVER 20 mg AND TOXICITY INDEX.
- ALL PLANTING BEDS SHALL RECEIVE MIN. 25 MM BARY MILK.
- PLANT SPECIES AND VARIETIES MAY NOT BE SUBSTITUTED WITHOUT THE APPROVAL OF THE LANDSCAPE ARCHITECT.
- THE CONTRACTOR SHALL GUARANTEE ALL MATERIALS AND WORKMANSHIP FOR A PERIOD OF ONE (1) YEAR FROM THE DATE OF FINAL ACCEPTANCE, UNLESS OTHERWISE SPECIFIED. ALL PLANT MATERIALS, BY CONTRACT, SHALL BE PROVIDED TO THE CONTRACTOR. THE CONTRACTOR SHALL BE RESPONSIBLE FOR THE PROTECTION OF THE CONTRACTOR'S AND OTHERS' PROPERTY.
- THE CONTRACTOR SHALL CLEAR AREA FROM THE SITE ALL OBSTACLES AS IT ACCUMULATES AND SHALL, AT THE COMPLETION OF THE WORK, LEAVE THE WORK AND THE SITE THEREIN IN A CLEAN AND REFINISHED CONDITION FREE FROM ALL OBSTRUCTIONS.



PLANTING DETAIL - SHRUBS & GRD. COVER PLANTS
SECTION N.T.S.



TREE PLANTING DETAIL
SECTION N.T.S.



DATE	REVISION	NO.
JUN/23	REVISED SITE PLAN FOR COMMENTS	3
JAN/23	REVISED SITE PLAN	2
SEP/22	REVISED SITE PLAN	1
DATE	REVISIONS	NO.

C. KAVOLINAS & ASSOCIATES INC.
BCSLA CSLA
2462 JONQUIL COURT
ABBOTSFORD, B.C.
V3G 3E8
PHONE (604) 857-2376

CLIENT:
WHITETAIL HOMES
GROUP OF COMPANIES
SUITE #104
3550 MT. LERMAN ROAD
ABBOTSFORD, B.C.
V4X 0A1

TITLE
PLAN VIEW
LANDSCAPE DETAILS
WHITETAIL
204 STREET APARTMENT
3566 - 204 STREET
LANGLEY, B.C.

SCALE	N.T.S.	DATE	AUG/22
DRAWN	DWTS		
ENL.	DWTS		
APPROV.	LE BULT		

PRINTED: DRAWING NO. L-1A