

53 AVE. LANGLEY CITY

LANDSCAPE SET - RESPONSE TO ADP RECOMMENDATIONS

JUNE 28th, 2024

LANDSCAPE DRAWING INDEX

L0.0	COVER SHEET
L0.1	TREE MANAGEMENT PLAN
L0.2	SOIL VOLUME DIAGRAM
L1.0	LANDSCAPE PLAN - GROUND
L1.1	LANDSCAPE PLAN - ROOFTOP
L1.2	DETAILED PLANS
L2.0	GRADING PLAN - GROUND
L3.0	PLANTING PALETTE
L3.1	PLANTING PLAN - GROUND
L3.2	PLANTING PLAN - ROOFTOP
L4.0	LIGHTING PLAN - GROUND
L4.1	LIGHTING PLAN - ROOFTOP
L4.2	LIGHTING MATERIALITY
L4.3	FENCING PLAN
L5.0	SECTIONS
L6.0	DETAILS
L6.1	DETAILS
L6.2	DETAILS
L6.3	DETAILS
L6.4	DETAILS
L6.5	DETAILS



David Stoyko
Landscape Architect

2686 6TH AVENUE EAST
VANCOUVER BC V6M 1R3
P: 604.730.0248

DAVID STOYKO LANDSCAPE ARCHITECT DOES NOT GUARANTEE THE EXISTENCE, LOCATION, AND ELEVATION OF ANY ELEMENT AT THE PROJECT SITE, INCLUDING UTILITIES AND/OR CONCEALED STRUCTURES, OR THE ACCURACY OF ANY INFORMATION PROVIDED FROM OTHER CONSULTANTS OR SOURCES. THE CONTRACTOR IS RESPONSIBLE FOR VERIFYING ALL SITE CONDITIONS.

THESE DRAWINGS HAVE BEEN PREPARED FOR THE CLIENT FOR THIS PROJECT AND SHOULD NOT BE USED OTHERWISE WITHOUT PERMISSION.

DO NOT SCALE OFF OF THESE DRAWINGS. NO RESPONSIBILITY CAN BE TAKEN WITH ANY ERRORS BY MEASURING OFF OF THESE DRAWINGS.

NOT FOR CONSTRUCTION



12	
11	
10	RESPONSE TO ADP RECOMMENDATIONS 24-06-28
9	ISSUED FOR RESPONSE TO ADP 24-06-13
8	ISSUED FOR ADP 24-05-07
7	ISSUED FOR ADP 24-04-24
6	ISSUED FOR DP 24-03-04
5	ISSUED FOR COORDINATION 24-03-01
4	ISSUED FOR REVIEW 24-02-16
3	ISSUED FOR CPTED REVIEW 24-02-02
2	ISSUED FOR REVIEW 24-02-01
1	ISSUED FOR PRELIMINARY REVIEW 23-12-22
REVISIONS	



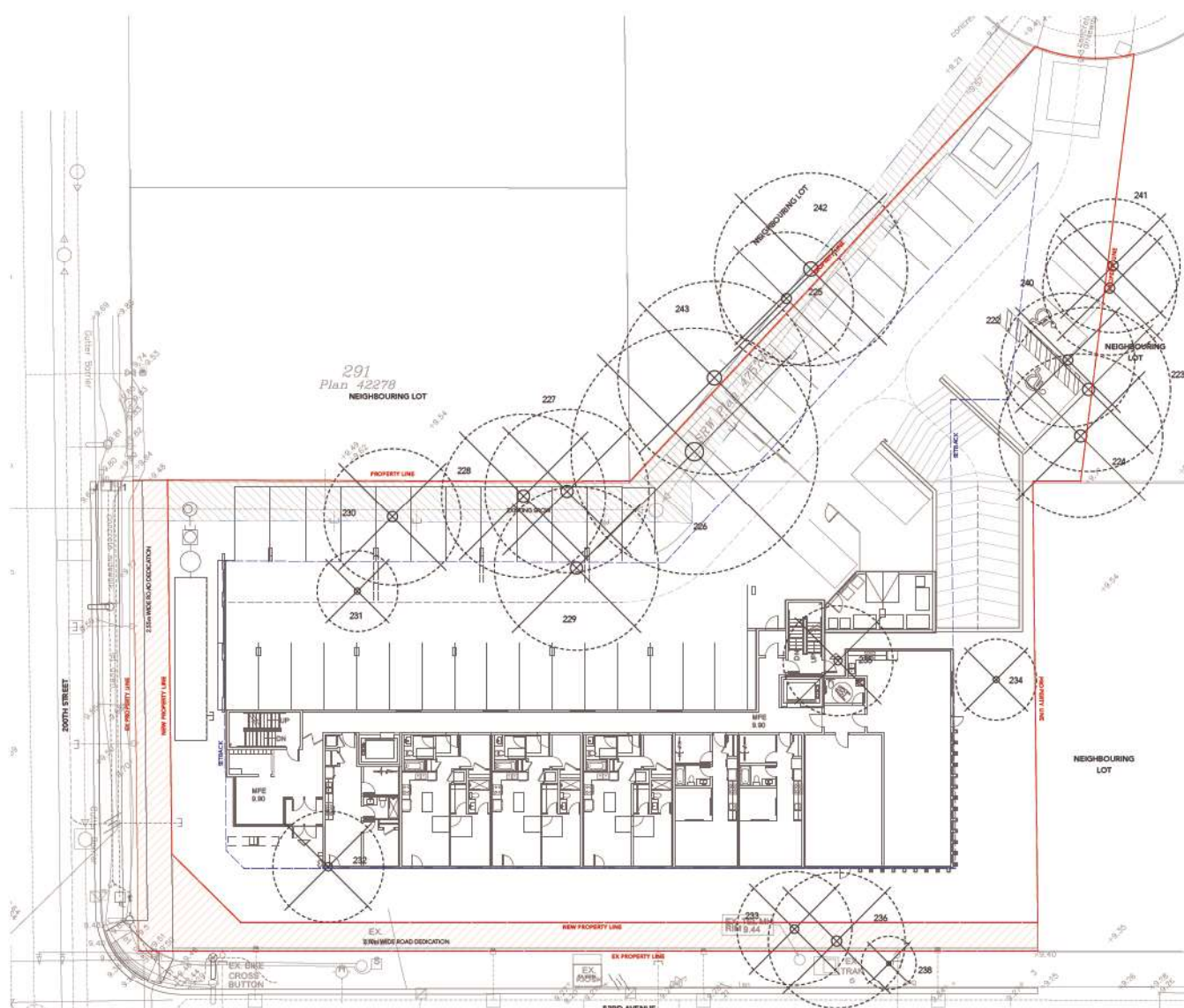
200TH STREET & 53RD AVENUE

5302 200th Street & 20011-31 53rd Avenue
Langley, British Columbia

Scale:	
Drawn:	PP
Reviewed:	DS
Project No.:	22-017

COVER SHEET

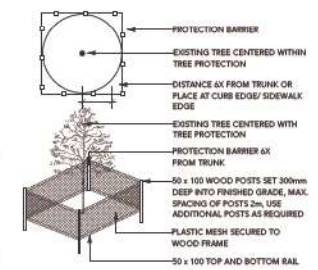
L0.0



1 Tree Management Plan
Scale: 1:150

TREE RETENTION / REMOVAL LEGEND

SYMBOL	DESCRIPTION
	TREE TO BE RETAINED PER ARBORIST REPORT
	TREE TO BE REMOVED PER ARBORIST REPORT
	TREE PROTECTION FENCING TREE PROTECTION FENCING TO BE INSTALLED PER CITY OF LANGLEY STANDARDS AND INSPECTED BY ARBORIST PRIOR TO CONSTRUCTION ACTIVITY
#12	TREE TAG PER ARBORIST REPORT



NOTES:
1. THIS PLAN HAS BEEN PREPARED WITH INFORMATION SUPPLIED BY THE PROJECT SURVEYOR, ARCHITECT, PLANNER, LANDSCAPE ARCHITECT, ARBORIST, AND CIVIL ENGINEER AND HAS BEEN REVIEWED AND SIGNED OFF BY EACH CONSULTANT AS BEING ACCURATE AND COMPLETE WITH RESPECT TO EXISTING AND ULTIMATE SITE CONDITIONS RELATED TO TREE RETENTION AND PROTECTION MATTERS.

2. ELEVATIONS SHOWN ARE IN METRIC.

- TREE PROTECTION NOTES:**
- DO NOT REMOVE OR RELOCATE ANY TREE, EXCEPT AS INDICATED ON PLANS.
 - INSTALL TREE PROTECTION BARRIERS AROUND ALL TREES TO BE PRESERVED. REMOVE ALL TREE PROTECTION BARRIERS AFTER CONSTRUCTION.
 - CONSULTANT TO PROVIDE WRITTEN INSPECTION AND APPROVAL OF ALL BARRIERS BEFORE CONSTRUCTION BEGINS.
 - LANDSCAPE ARCHITECT TO BE ON-SITE FOR WORK WITHIN TREE PROTECTION ZONES OR EXISTING TREE ROOTS.
 - ALL TREE PROTECTION FENCING MUST REMAIN IN PLACE AND IN GOOD ORDER THROUGHOUT THE CONSTRUCTION PROCESS. ANY ALTERATION OF THE FENCES MUST BE PRE APPROVED BY THE ARBORIST.
 - ANY DAMAGE TO EXISTING TREES SHALL BE REPAIRED TO THE SATISFACTION ON THE CONSULTANT AT CONTRACTOR EXPENSE.

2886 5TH AVENUE EAST
VANCOUVER BC V6M 1R3
P.604.733.9448

DAVID STOYKO LANDSCAPE ARCHITECT DOES NOT GUARANTEE THE EXISTENCE, LOCATION, AND ELEVATION OF ANY ELEMENT AT THE PROJECT SITE, INCLUDING UTILITIES AND/OR CONCEALED STRUCTURES, OR THE ACCURACY OF ANY INFORMATION PROVIDED FROM OTHER CONSULTANTS OR SOURCES. THE CONTRACTOR IS RESPONSIBLE FOR VERIFYING ALL SITE CONDITIONS.

THESE DRAWINGS HAVE BEEN PREPARED FOR THE CLIENT FOR THIS PROJECT AND SHOULD NOT BE USED OTHERWISE WITHOUT PERMISSION.

DO NOT SCALE OFF OF THESE DRAWINGS. NO RESPONSIBILITY CAN BE TAKEN WITH ANY ERRORS BY MEASURING OFF OF THESE DRAWINGS.

NOT FOR CONSTRUCTION



12	
11	
10	RESPONSE TO ADP RECOMMENDATIONS 24-06-28
9	ISSUED FOR RESPONSE TO ADP 24-06-13
8	ISSUED FOR ADP 24-05-07
7	ISSUED FOR ADP 24-04-24
6	ISSUED FOR DP 24-03-04
5	ISSUED FOR COORDINATION 24-03-01
4	ISSUED FOR REVIEW 24-02-16
3	ISSUED FOR CPTED REVIEW 24-02-02
2	ISSUED FOR REVIEW 24-02-01
1	ISSUED FOR PRELIMINARY REVIEW 23-12-22
REVISIONS	



200TH STREET & 53RD AVENUE

5302 200th Street & 20011-31 53rd Avenue
Langley, British Columbia

Scale:	
Drawn:	MGC
Reviewed:	DS
Project No.	22-017

TREE MANAGEMENT PLAN

DAVID STOYKO LANDSCAPE ARCHITECT DOES NOT GUARANTEE THE EXISTENCE, LOCATION, AND ELEVATION OF ANY ELEMENT AT THE PROJECT SITE, INCLUDING UTILITIES AND/OR CONCEALED STRUCTURES, OR THE ACCURACY OF ANY INFORMATION PROVIDED FROM OTHER CONSULTANTS OR SOURCES. THE CONTRACTOR IS RESPONSIBLE FOR VERIFYING ALL SITE CONDITIONS.

THESE DRAWINGS HAVE BEEN PREPARED FOR THE CLIENT FOR THIS PROJECT AND SHOULD NOT BE USED OTHERWISE WITHOUT PERMISSION.

DO NOT SCALE OFF OF THESE DRAWINGS. NO RESPONSIBILITY CAN BE TAKEN WITH ANY ERRORS BY MEASURING OFF OF THESE DRAWINGS.

NOT FOR CONSTRUCTION



12	
11	
10	RESPONSE TO ADP RECOMMENDATIONS 24-06-28
9	ISSUED FOR RESPONSE TO ADP 24-06-13
8	ISSUED FOR ADP 24-05-07
7	ISSUED FOR ADP 24-04-24
6	ISSUED FOR DP 24-03-04
5	ISSUED FOR COORDINATION 24-03-01
4	ISSUED FOR REVIEW 24-02-16
3	ISSUED FOR CPTED REVIEW 24-02-02
2	ISSUED FOR REVIEW 24-02-01
1	ISSUED FOR PRELIMINARY REVIEW 23-12-22

REVISIONS



200TH STREET & 53RD
AVENUE

5302 200th Street & 20011-31 53rd
Avenue
Langley, British Columbia

Scale:	
Drawn:	PP
Reviewed:	DS
Project No.:	22-017

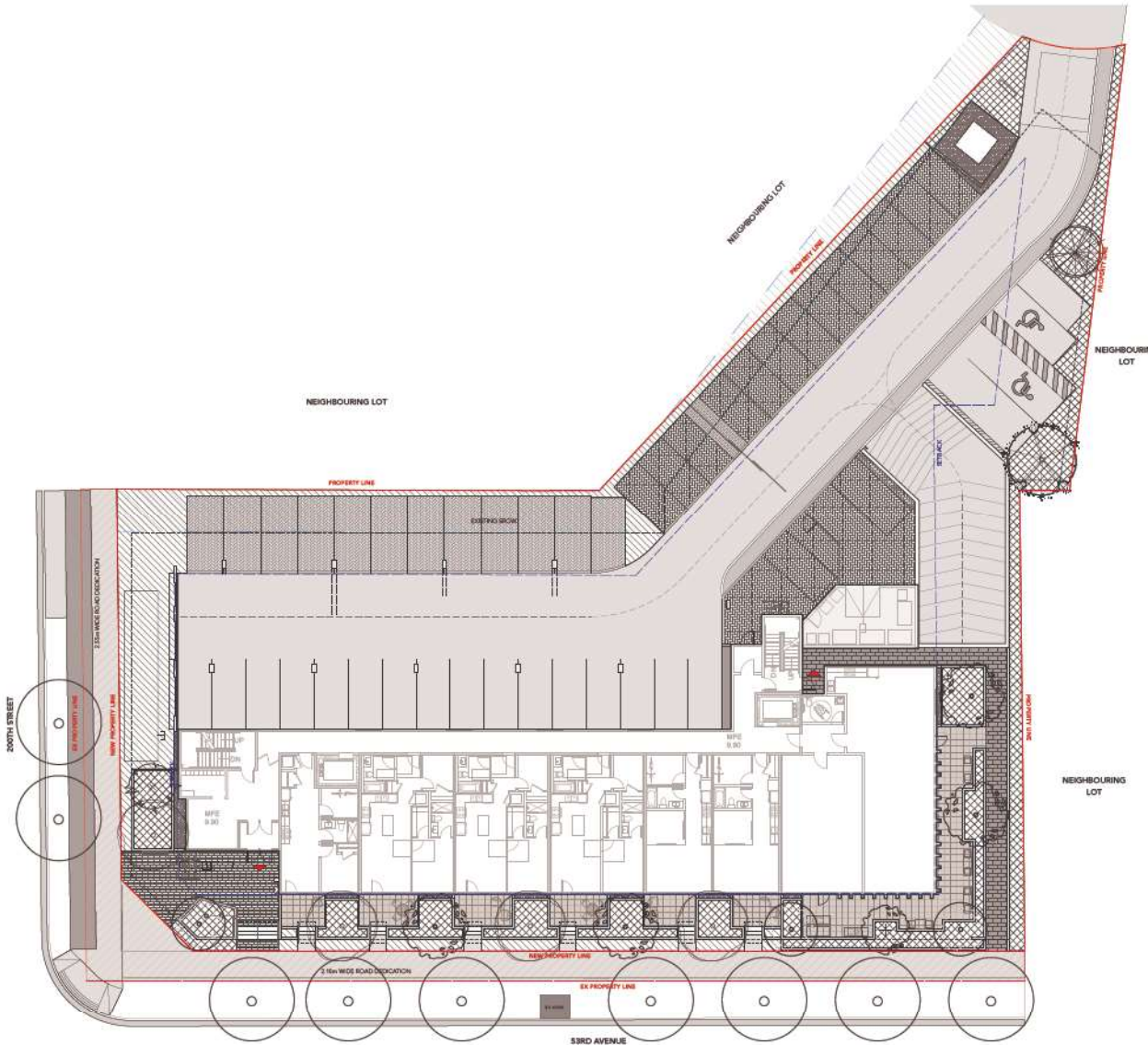
SOIL DEPTH
DIAGRAM

L0.2

SOIL DEPTH LEGEND

SYMBOL	DESCRIPTION
	915MM (3'0") TREE PLANTING MINIMUM DEPTH
	610MM (1'6"-2'0") SHRUB PLANTING MINIMUM DEPTH
	450MM (1'6") GROUND COVER PLANTING MINIMUM DEPTH

NOTES:
1. ALL SOIL DEPTHS TO MEET OR EXCEED THE BC LANDSCAPE STANDARD, LATEST EDITION.



1 Landscape Plan - Ground
Scale: 1:150

DAVID STOYKO LANDSCAPE ARCHITECT DOES NOT GUARANTEE THE EXISTENCE, LOCATION, AND ELEVATION OF ANY ELEMENT AT THE PROJECT SITE, INCLUDING UTILITIES AND/OR CONCEALED STRUCTURES, OR THE ACCURACY OF ANY INFORMATION PROVIDED FROM OTHER CONSULTANTS OR SOURCES. THE CONTRACTOR IS RESPONSIBLE FOR VERIFYING ALL SITE CONDITIONS.

THESE DRAWINGS HAVE BEEN PREPARED FOR THE CLIENT FOR THIS PROJECT AND SHOULD NOT BE USED OTHERWISE WITHOUT PERMISSION.

DO NOT SCALE OFF OF THESE DRAWINGS. NO RESPONSIBILITY CAN BE TAKEN WITH ANY ERRORS BY MEASURING OFF OF THESE DRAWINGS.

NOT FOR CONSTRUCTION



12	
11	
10	RESPONSE TO ADP RECOMMENDATIONS 24-06-28
9	ISSUED FOR RESPONSE TO ADP 24-06-13
8	ISSUED FOR ADP 24-06-07
7	ISSUED FOR ADP 24-04-24
6	ISSUED FOR DP 24-03-04
5	ISSUED FOR COORDINATION 24-03-01
4	ISSUED FOR REVIEW 24-02-16
3	ISSUED FOR CPTED REVIEW 24-02-02
2	ISSUED FOR REVIEW 24-02-01
1	ISSUED FOR PRELIMINARY REVIEW 23-12-22

REVISIONS



200TH STREET & 53RD AVENUE

5302 200th Street & 20011-31 53rd Avenue
Langley, British Columbia

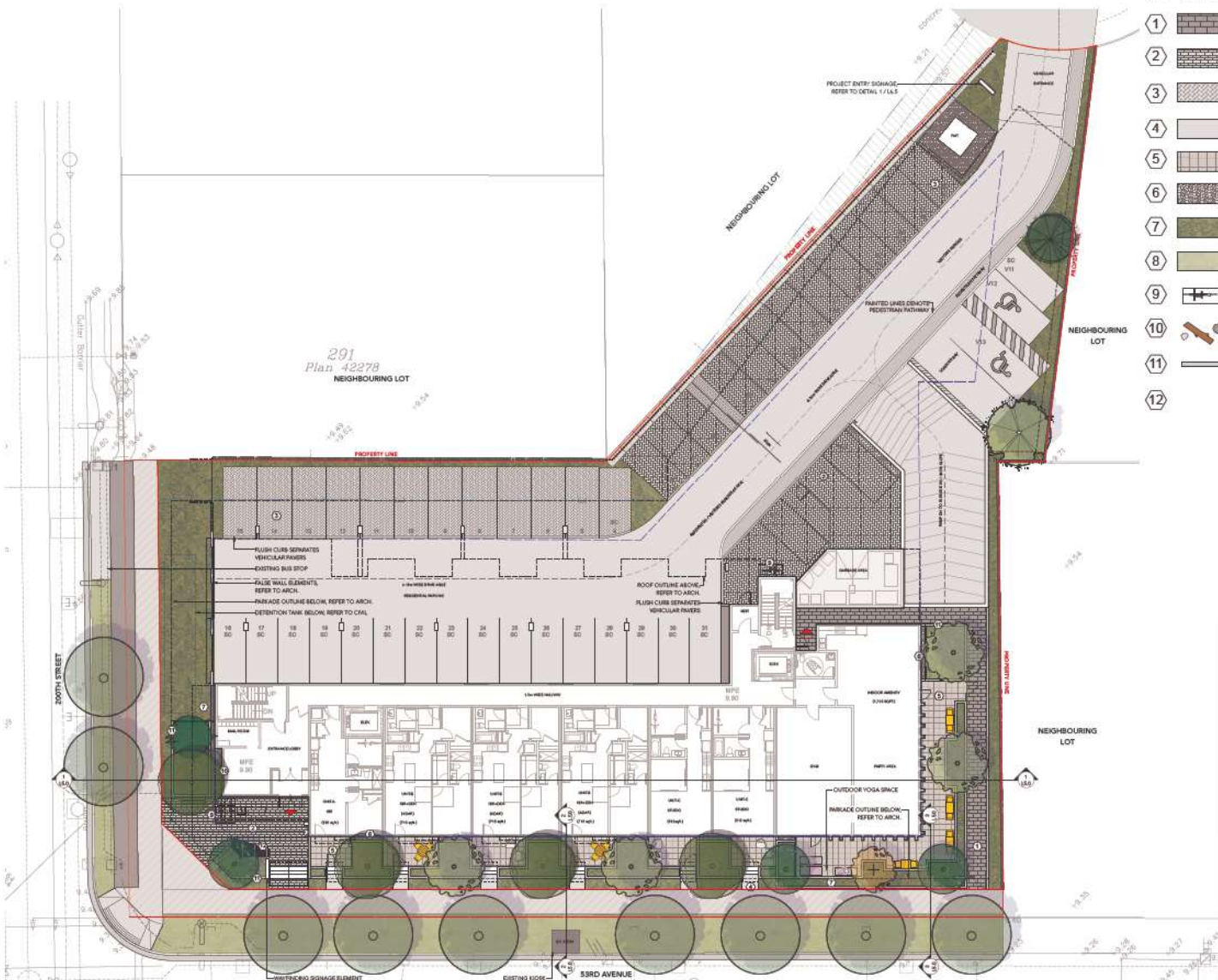
Scale:	
Drawn:	PP
Reviewed:	DS
Project No.:	22-017

LANDSCAPE PLAN - LEVEL 1

L1.0

LAYOUT AND MATERIALS LEGEND - GROUND

KEY	SYMBOL	DETAIL	DESCRIPTION
1		3.4 L6.1	LINEAR UNIT PAVERS TECHO-BLOC LINNEA (CHAMPLAIN GREY)
2		3.4 L6.1	FEATURE PAVERS BARKMAN BROADWAY PLANK (STERLING, NATURAL)
3		7 L6.1	VEHICULAR CONCRETE PAVERS BARKMAN: HOLLAND PAVERS (NATURAL, SIERRA GREY)
4		1.2 L6.1	CIP CONCRETE PAVING PER PLANS AND DETAILS
5		6 L6.1	2'x2' SLAB PAVERS (TYPE 1) BELGARD: TEXADA HYDRAPRESSED SLABS (NATURAL)
6		8 L6.1	GRAVEL PER PLANS AND DETAILS
7		1.7 L6.0	PROPOSED PLANTING REFER TO PLANT LIST
8			PROPOSED SODDED LAWN PER PLANS AND DETAILS
9		9 L6.2	BIKE RACK 2 CLASS B SPACES EACH
10			SMALL BOULDERS AND LOGS PER PLANS AND DETAILS
11		9 L6.1	CONCRETE PLANTER WALL PER PLANS AND DETAILS
12		1 L6.3	LOBBY ENTRY SEATING PLATFORM PER PLANS AND DETAILS



1 Landscape Plan - Ground
Scale: 1:150



DAVID STOYKO LANDSCAPE ARCHITECT DOES NOT GUARANTEE THE EXISTENCE, LOCATION, AND ELEVATION OF ANY ELEMENT AT THE PROJECT SITE, INCLUDING UTILITIES AND/OR CONCEALED STRUCTURES, OR THE ACCURACY OF ANY INFORMATION PROVIDED FROM OTHER CONSULTANTS OR SOURCES. THE CONTRACTOR IS RESPONSIBLE FOR VERIFYING ALL SITE CONDITIONS.

THESE DRAWINGS HAVE BEEN PREPARED FOR THE CLIENT FOR THE PROJECT AND SHOULD NOT BE USED OTHERWISE WITHOUT PERMISSION.

DO NOT SCALE OFF OF THESE DRAWINGS. NO RESPONSIBILITY CAN BE TAKEN WITH ANY ERRORS BY MEASURING OFF OF THESE DRAWINGS.

NOT FOR CONSTRUCTION



12	
11	
10	RESPONSE TO ADP RECOMMENDATIONS 24-06-28
9	ISSUED FOR RESPONSE TO ADP 24-06-13
8	ISSUED FOR ADP 24-08-07
7	ISSUED FOR ADP 24-04-24
6	ISSUED FOR DP 24-03-04
5	ISSUED FOR COORDINATION 24-03-01
4	ISSUED FOR REVIEW 24-02-16
3	ISSUED FOR CPTED REVIEW 24-02-02
2	ISSUED FOR REVIEW 24-02-01
1	ISSUED FOR PRELIMINARY REVIEW 23-12-22
REVISIONS	



200TH STREET & 53RD AVENUE

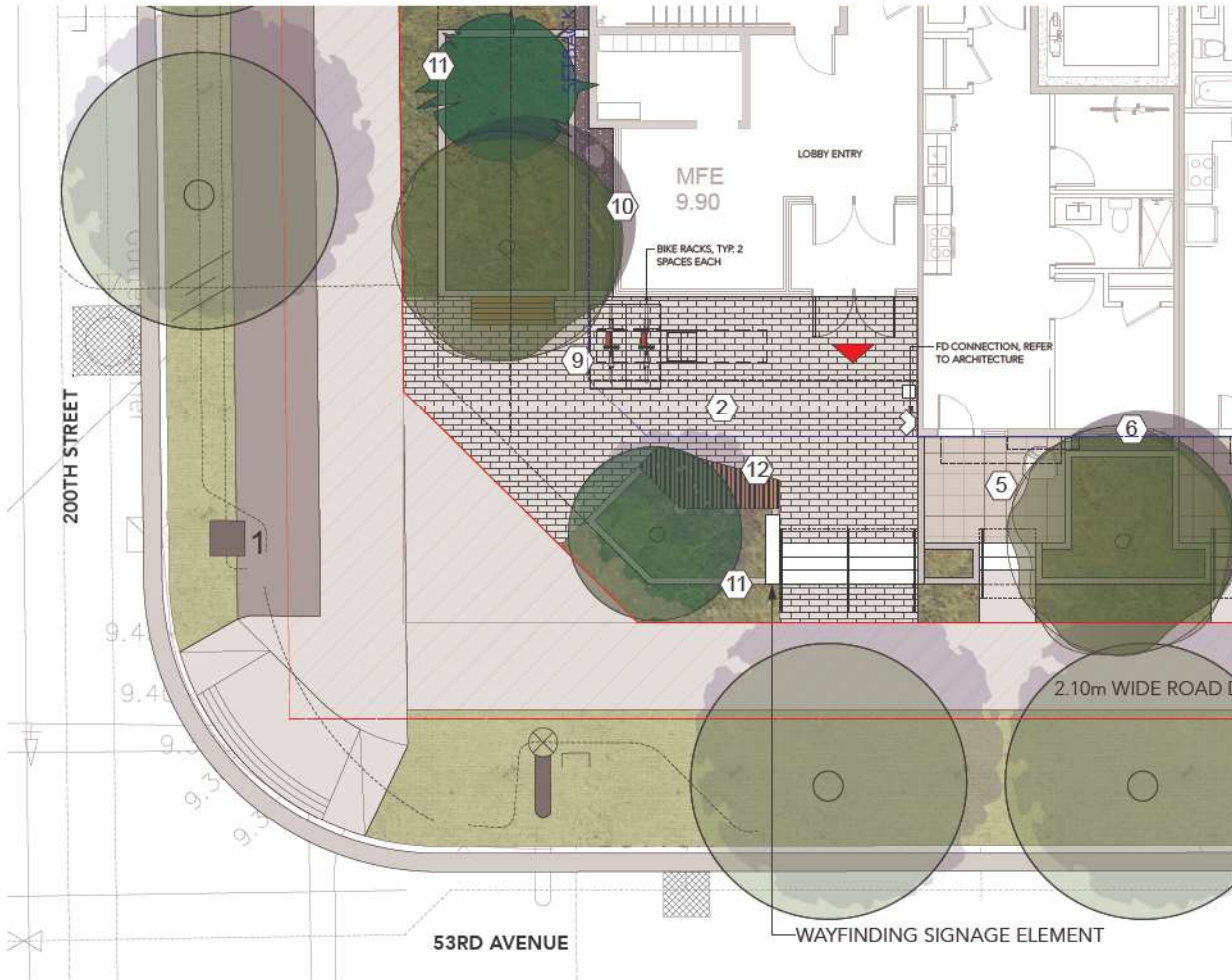
5302 200th Street & 20011-31 53rd
Avenue
Langley, British Columbia

Scale:	
Drawn:	PP
Reviewed:	DS
Project No.:	22-017

DETAILED PLANS

LAYOUT AND MATERIALS LEGEND - GROUND

KEY	SYMBOL	DETAIL	DESCRIPTION
1		3.4 L&1	LINEAR UNIT PAVERS TECHO-BLOC LINNEA (CHAMPLAIN GREY)
2		3.4 L&1	FEATURE PAVERS BARKMAN BROADWAY PLANK (STERLING, NATURAL)
3		7 L&1	VEHICULAR CONCRETE PAVERS BARKMAN: HOLLAND PAVERS (NATURAL, SIERRA GREY)
4		1.2 L&1	CIP CONCRETE PAVING PER PLANS AND DETAILS
5		6 L&1	2'x2' SLAB PAVERS (TYPE 1) BELGARD: TEXADA HYDRAPRESSED SLABS (NATURAL)
6		8 L&1	GRAVEL PER PLANS AND DETAILS
7		1.7 L&0	PROPOSED PLANTING REFER TO PLANT LIST
8			PROPOSED SODDED LAWN PER PLANS AND DETAILS
9		9 L&2	BIKE RACK 2 CLASS B SPACES EACH
10			SMALL BOULDERS AND LOGS PER PLANS AND DETAILS
11		9 L&1	CONCRETE PLANTER WALL PER PLANS AND DETAILS
12		1 L&3	LOBBY ENTRY SEATING PLATFORM PER PLANS AND DETAILS



1 Detailed Plan - Lobby Entry
Scale: 1:50

OVERALL CONCEPT



LAYERED & TEXTURED PLANTING SCHEME THAT PROVIDES ALL-SEASON INTEREST USING PREDOMINANTLY NATIVE PLANTS TREES



PLANT LIST

QTY.	BOTANICAL NAME	COMMON NAME	SIZE	SPACING	NOTES
9	Acer x freemanii	Freeman's Maple	7cm cal.	As shown	
1	Pinus heldreichii 'Compact Gem'	Compact Gem Bosnian Pine	5cm cal. Wire Basket	As shown	
4	Acer shirasawanum 'Moonrise'	Full Moon Maple	5cm cal. Wire Basket	As shown	
6	Zelkova serrata	Japanese Zelkova	7cm cal. Wire Basket	As shown	
1	Cercis canadensis	Eastern Redbud	5cm cal. Wire Basket	As shown	
1	Pinus contorta var. contorta	Shore Pine	5cm cal. Wire Basket	As shown	
1	Liriodendron tulipifera	Tulip Tree	7cm cal. Wire Basket	As shown	
3	Arbutus unedo	Strawberry Tree	5cm cal. Wire Basket	As shown	
4	Acer griseum	Paperbark Maple	5cm cal. Wire Basket	As shown	
21	TOTAL TREES (excluding street trees)				

TALL SHRUBS					
14	Hamamelis x intermedia	Witch Hazel	#5 Pot	24" o.c.	
26	Ceanothus 'Victoria'	California Lilac	#2 pot	24" o.c.	
20	Rubus spectabilis	Salmonberry	#5 Pot	36" o.c.	
14	Fatsia japonica	Japanese Aralia	#2 pot	24" o.c.	
61	Lonicera pileata	Box-Leaved Honeysuckle	#2 pot	24" o.c.	
15	Symphoricarpos albus	Snowberry	#2 Pot	36" o.c.	

LOW SHRUBS					
14	Gaultheria shallon	Salal	#2 pot	24" o.c.	
34	Cornus sericea 'Kelsey'	Dwarf Red Osier Dogwood	#2 pot	24" o.c.	
58	Mahonia nervosa	Dwarf Oregon Grape	#2 pot	24" o.c.	
71	Fothergilla gardenii	Dwarf Fothergilla	#1 pot	18" o.c.	
51	Sarcococca hookeriana 'Humilis'	Himalayan Sweet Box	#2 pot	18" o.c.	
60	Spiraea betulifolia var. lucida	White Spiraea	#2 pot	36" o.c.	
48	Rhododendron 'Ken Janek'	Ken Janek Rhododendron	#5 pot	24" o.c.	
23	Blechnum spicant	Deer Fern	#1 Pot	18" o.c.	
26	Polystichum munifum	Western Sword Fern	#1 pot	24" o.c.	

GROUNDCOVERS					
157	Arctostaphylos uva-ursi	Kinnikinnick	4" (10cm) pot	18" o.c.	
201	Fragaria chiloensis	Beach Strawberry	4" (10cm) Pot	15" o.c.	
228	Pachysandra terminalis	Japanese Spurge	4" (10cm) Pot	15" o.c.	

PERENNIALS					
56	Carex obnupta	Slough Sledge	#1 Pot	18" o.c.	
97	Stipa tenuissima	Mexican Feather Grass	#1 Pot	18" o.c.	

SOD LAWN					
1	1 sq. m. sod				

NATIVE PLANTS
 DROUGHT TOLERANT PLANTS
 POLLINATOR FRIENDLY PLANTS
 SEASONAL INTEREST PLANTS
 FOOD RESOURCE PLANTS
 HABITAT VALUE PLANTS
 EVERGREEN PLANTS

David Stoyko
Landscape Architect

2886 5TH AVENUE EAST
VANCOUVER BC V6M 1R3
P.604.203.0448

DAVID STOYKO LANDSCAPE ARCHITECT DOES NOT GUARANTEE THE EXISTENCE, LOCATION, AND ELEVATION OF ANY ELEMENT AT THE PROJECT SITE, INCLUDING UTILITIES AND/OR CONCEALED STRUCTURES, OR THE ACCURACY OF ANY INFORMATION PROVIDED FROM OTHER CONSULTANTS OR SOURCES. THE CONTRACTOR IS RESPONSIBLE FOR VERIFYING ALL SITE CONDITIONS.

THESE DRAWINGS HAVE BEEN PREPARED FOR THE CLIENT FOR THIS PROJECT AND SHOULD NOT BE USED OTHERWISE WITHOUT PERMISSION.

DO NOT SCALE OFF OF THESE DRAWINGS. NO RESPONSIBILITY CAN BE TAKEN WITH ANY ERRORS BY MEASURING OFF OF THESE DRAWINGS.

NOT FOR CONSTRUCTION



12		
11		
10	RESPONSE TO ADP RECOMMENDATIONS	24-06-28
9	ISSUED FOR RESPONSE TO ADP	24-06-13
8	ISSUED FOR ADP	24-05-07
7	ISSUED FOR ADP	24-04-24
6	ISSUED FOR DP	24-03-04
5	ISSUED FOR COORDINATION	24-03-01
4	ISSUED FOR REVIEW	24-02-16
3	ISSUED FOR CPTED REVIEW	24-02-02
2	ISSUED FOR REVIEW	24-02-01
1	ISSUED FOR PRELIMINARY REVIEW	23-12-22



200TH STREET & 53RD AVENUE

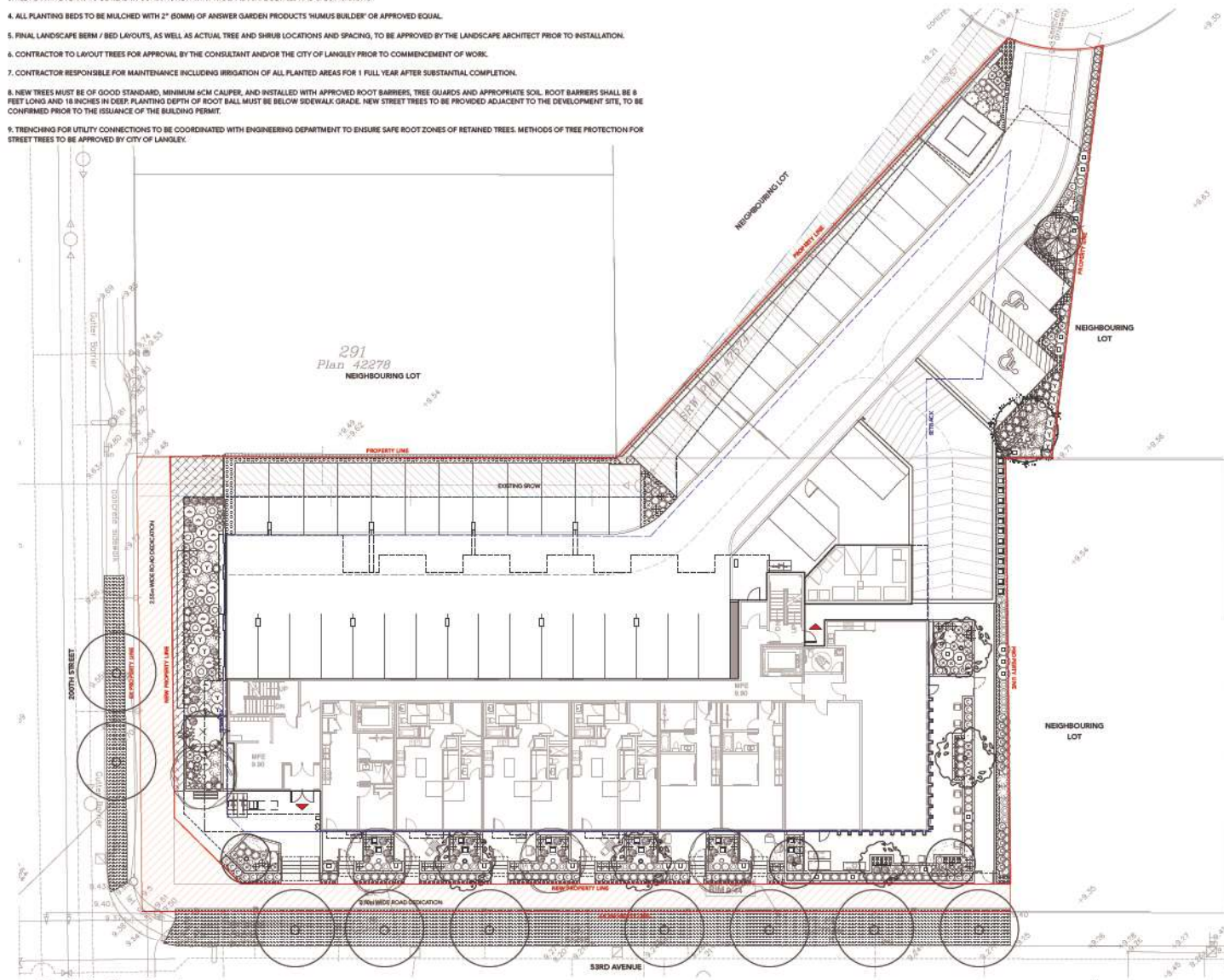
5302 200th Street & 20011-31 53rd Avenue
Langley, British Columbia

Scale:	
Drawn:	MGC
Reviewed:	DS
Project No.	22-017

PLANTING CONCEPT

PLANTING NOTES

1. IN CASE OF DISCREPANCY BETWEEN PLANT NUMBERS ON THIS LIST AND ON THE PLAN, THE LATTER SHALL PREVAIL.
2. ALL PLANTING SHALL MEET OR EXCEED THE REQUIREMENTS AS OUTLINED IN THE CANADIAN LANDSCAPE STANDARD, LATEST EDITION.
3. ALL PLANTING PLANS TO BE READ IN CONJUNCTION WITH THE LANDSCAPE DETAILS AND SPECIFICATIONS.
4. ALL PLANTING BEDS TO BE MULCHED WITH 2" (50MM) OF ANSWER GARDEN PRODUCTS 'HUMUS BUILDER' OR APPROVED EQUAL.
5. FINAL LANDSCAPE BERM / BED LAYOUTS, AS WELL AS ACTUAL TREE AND SHRUB LOCATIONS AND SPACING, TO BE APPROVED BY THE LANDSCAPE ARCHITECT PRIOR TO INSTALLATION.
6. CONTRACTOR TO LAYOUT TREES FOR APPROVAL BY THE CONSULTANT AND/OR THE CITY OF LANGLEY PRIOR TO COMMENCEMENT OF WORK.
7. CONTRACTOR RESPONSIBLE FOR MAINTENANCE INCLUDING IRRIGATION OF ALL PLANTED AREAS FOR 1 FULL YEAR AFTER SUBSTANTIAL COMPLETION.
8. NEW TREES MUST BE OF GOOD STANDARD, MINIMUM 6CM CALIPER, AND INSTALLED WITH APPROVED ROOT BARRIERS, TREE GUARDS AND APPROPRIATE SOIL. ROOT BARRIERS SHALL BE 8 FEET LONG AND 18 INCHES IN DEEP. PLANTING DEPTH OF ROOT BALL MUST BE BELOW SIDEWALK GRADE. NEW STREET TREES TO BE PROVIDED ADJACENT TO THE DEVELOPMENT SITE, TO BE CONFIRMED PRIOR TO THE ISSUANCE OF THE BUILDING PERMIT.
9. TRENCHING FOR UTILITY CONNECTIONS TO BE COORDINATED WITH ENGINEERING DEPARTMENT TO ENSURE SAFE ROOT ZONES OF RETAINED TREES. METHODS OF TREE PROTECTION FOR STREET TREES TO BE APPROVED BY CITY OF LANGLEY.



1 Planting Plan - Ground
Scale: 1:150

David Stoyko
Landscape Architect

2886 8TH AVENUE EAST
VANCOUVER BC V6M 1R3
P.604.720.0448

DAVID STOYKO LANDSCAPE ARCHITECT DOES NOT GUARANTEE THE EXISTENCE, LOCATION, AND ELEVATION OF ANY ELEMENT AT THE PROJECT SITE, INCLUDING UTILITIES AND/OR CONCEALED STRUCTURES, OR THE ACCURACY OF ANY INFORMATION PROVIDED FROM OTHER CONSULTANTS OR SOURCES. THE CONTRACTOR IS RESPONSIBLE FOR VERIFYING ALL SITE CONDITIONS.

THESE DRAWINGS HAVE BEEN PREPARED FOR THE CLIENT FOR THIS PROJECT AND SHOULD NOT BE USED OTHERWISE WITHOUT PERMISSION.

DO NOT SCALE OFF OF THESE DRAWINGS. NO RESPONSIBILITY CAN BE TAKEN WITH ANY ERRORS BY MEASURING OFF OF THESE DRAWINGS.

NOT FOR CONSTRUCTION



12	
11	
10	RESPONSE TO ADP RECOMMENDATIONS 24-06-28
9	ISSUED FOR RESPONSE TO ADP 24-06-13
8	ISSUED FOR ADP 24-05-07
7	ISSUED FOR ADP 24-04-24
6	ISSUED FOR DP 24-03-04
5	ISSUED FOR COORDINATION 24-03-01
4	ISSUED FOR REVIEW 24-02-16
3	ISSUED FOR CPTED REVIEW 24-02-02
2	ISSUED FOR REVIEW 24-02-01
1	ISSUED FOR PRELIMINARY REVIEW 23-12-22

REVISIONS



200TH STREET & 53RD AVENUE

5302 200th Street & 20011-31 53rd Avenue
Langley, British Columbia

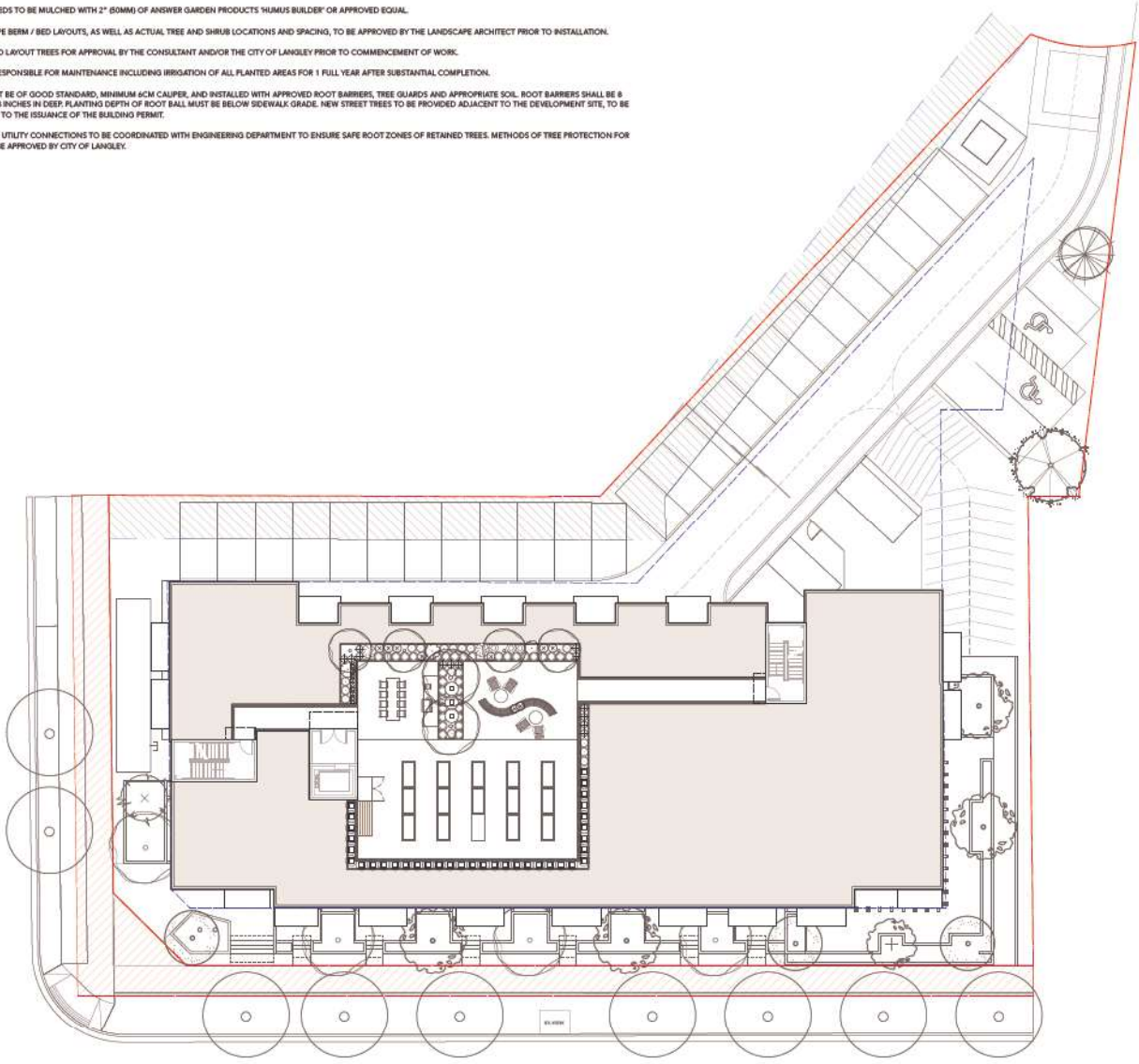
Scale:	1:150
Drawn:	MGC
Reviewed:	DS
Project No.	22-017

PLANTING PLAN - LEVEL 1

L3.1

PLANTING NOTES

1. IN CASE OF DISCREPANCY BETWEEN PLANT NUMBERS ON THIS LIST AND ON THE PLAN, THE LATTER SHALL PREVAIL.
2. ALL PLANTING SHALL MEET OR EXCEED THE REQUIREMENTS AS OUTLINED IN THE CANADIAN LANDSCAPE STANDARD, LATEST EDITION.
3. ALL PLANTING PLANS TO BE READ IN CONJUNCTION WITH THE LANDSCAPE DETAILS AND SPECIFICATIONS.
4. ALL PLANTING BEDS TO BE MULCHED WITH 2" (50MM) OF ANSWER GARDEN PRODUCTS 'HUMUS BUILDER' OR APPROVED EQUAL.
5. FINAL LANDSCAPE BERM / BED LAYOUTS, AS WELL AS ACTUAL TREE AND SHRUB LOCATIONS AND SPACING, TO BE APPROVED BY THE LANDSCAPE ARCHITECT PRIOR TO INSTALLATION.
6. CONTRACTOR TO LAYOUT TREES FOR APPROVAL BY THE CONSULTANT AND/OR THE CITY OF LANGLEY PRIOR TO COMMENCEMENT OF WORK.
7. CONTRACTOR RESPONSIBLE FOR MAINTENANCE INCLUDING IRRIGATION OF ALL PLANTED AREAS FOR 1 FULL YEAR AFTER SUBSTANTIAL COMPLETION.
8. NEW TREES MUST BE OF GOOD STANDARD, MINIMUM 6CM CALIPER, AND INSTALLED WITH APPROVED ROOT BARRIERS, TREE GUARDS AND APPROPRIATE SOIL. ROOT BARRIERS SHALL BE 8 FEET LONG AND 18 INCHES IN DEEP. PLANTING DEPTH OF ROOT BALL MUST BE BELOW SIDEWALK GRADE. NEW STREET TREES TO BE PROVIDED ADJACENT TO THE DEVELOPMENT SITE, TO BE CONFIRMED PRIOR TO THE ISSUANCE OF THE BUILDING PERMIT.
9. TRENCHING FOR UTILITY CONNECTIONS TO BE COORDINATED WITH ENGINEERING DEPARTMENT TO ENSURE SAFE ROOT ZONES OF RETAINED TREES. METHODS OF TREE PROTECTION FOR STREET TREES TO BE APPROVED BY CITY OF LANGLEY.



1 Planting Plan - Roof
Scale: 1:150

David Stoyko
Landscape Architect

2886 8TH AVENUE EAST
VANCOUVER BC V6M 1R3
P.604.203.0448

DAVID STOYKO LANDSCAPE ARCHITECT DOES NOT GUARANTEE THE EXISTENCE, LOCATION, AND ELEVATION OF ANY ELEMENT AT THE PROJECT SITE, INCLUDING UTILITIES AND/OR CONCEALED STRUCTURES, OR THE ACCURACY OF ANY INFORMATION PROVIDED FROM OTHER CONSULTANTS OR SOURCES. THE CONTRACTOR IS RESPONSIBLE FOR VERIFYING ALL SITE CONDITIONS.

THESE DRAWINGS HAVE BEEN PREPARED FOR THE CLIENT FOR THIS PROJECT AND SHOULD NOT BE USED OTHERWISE WITHOUT PERMISSION.

DO NOT SCALE OFF OF THESE DRAWINGS. NO RESPONSIBILITY CAN BE TAKEN WITH ANY ERRORS BY MEASURING OFF OF THESE DRAWINGS.

NOT FOR CONSTRUCTION



12	
11	
10	RESPONSE TO ADP RECOMMENDATIONS 24-06-28
9	ISSUED FOR RESPONSE TO ADP 24-06-13
8	ISSUED FOR ADP 24-05-07
7	ISSUED FOR ADP 24-04-24
6	ISSUED FOR DP 24-03-04
5	ISSUED FOR COORDINATION 24-03-01
4	ISSUED FOR REVIEW 24-02-16
3	ISSUED FOR CPTED REVIEW 24-02-02
2	ISSUED FOR REVIEW 24-02-01
1	ISSUED FOR PRELIMINARY REVIEW 23-12-22
REVISIONS	



200TH STREET & 53RD AVENUE

5302 200th Street & 20011-31 53rd Avenue
Langley, British Columbia

Scale:	1:150
Drawn:	MGC
Reviewed:	DS
Project No.	22-017

PLANTING PLAN - ROOF LEVEL

L3.2

DAVID STOYKO LANDSCAPE ARCHITECT DOES NOT GUARANTEE THE EXISTENCE, LOCATION, AND ELEVATION OF ANY ELEMENT AT THE PROJECT SITE, INCLUDING UTILITIES AND/OR CONCEALED STRUCTURES, OR THE ACCURACY OF ANY INFORMATION PROVIDED FROM OTHER CONSULTANTS OR SOURCES. THE CONTRACTOR IS RESPONSIBLE FOR VERIFYING ALL SITE CONDITIONS.

THESE DRAWINGS HAVE BEEN PREPARED FOR THE CLIENT FOR THIS PROJECT AND SHOULD NOT BE USED OTHERWISE WITHOUT PERMISSION.

DO NOT SCALE OFF OF THESE DRAWINGS. NO RESPONSIBILITY CAN BE TAKEN WITH ANY ERRORS BY MEASURING OFF OF THESE DRAWINGS.

NOT FOR CONSTRUCTION



12	
11	
10	RESPONSE TO ADP RECOMMENDATIONS 24-06-28
9	ISSUED FOR RESPONSE TO ADP 24-06-13
8	ISSUED FOR ADP 24-05-07
7	ISSUED FOR ADP 24-04-24
6	ISSUED FOR DP 24-03-04
5	ISSUED FOR COORDINATION 24-03-01
4	ISSUED FOR REVIEW 24-02-16
3	ISSUED FOR CPTED REVIEW 24-02-02
2	ISSUED FOR REVIEW 24-02-01
1	ISSUED FOR PRELIMINARY REVIEW 23-12-22
REVISIONS	



200TH STREET & 53RD
AVENUE

5302 200th Street & 20011-31 53rd
Avenue
Langley, British Columbia

Scale:	1:150
Drawn:	MGC
Reviewed:	DS
Project No.:	22-017

LIGHTING PLAN -
LEVEL 1

L4.0

LIGHTING LEGEND

SYMBOL	DESCRIPTION
	UPLIGHT
	WALL LIGHT
	BOLLARD LIGHT
	LED STRIP LIGHT
	METAL PLANTER-MOUNTED LIGHT

NOTE:
LIGHTING PLAN PROVIDED FOR INFORMATION ONLY. ELECTRICAL ENGINEER TO DESIGN SITE LIGHTING AND PROVIDE SPECS AND QUANTITIES DURING BUILDING PERMIT APPLICATION.



1 Lighting Plan - Ground
Scale: 1:150



DAVID STOYKO LANDSCAPE ARCHITECT DOES NOT GUARANTEE THE EXISTENCE, LOCATION, AND ELEVATION OF ANY ELEMENT AT THE PROJECT SITE, INCLUDING UTILITIES AND/OR CONCEALED STRUCTURES, OR THE ACCURACY OF ANY INFORMATION PROVIDED FROM OTHER CONSULTANTS OR SOURCES. THE CONTRACTOR IS RESPONSIBLE FOR VERIFYING ALL SITE CONDITIONS.

THESE DRAWINGS HAVE BEEN PREPARED FOR THE CLIENT FOR THIS PROJECT AND SHOULD NOT BE USED OTHERWISE WITHOUT PERMISSION.

DO NOT SCALE OFF OF THESE DRAWINGS. NO RESPONSIBILITY CAN BE TAKEN WITH ANY ERRORS BY MEASURING OFF OF THESE DRAWINGS.

NOT FOR CONSTRUCTION



12	
11	
10	RESPONSE TO ADP RECOMMENDATIONS 24-06-28
9	ISSUED FOR RESPONSE TO ADP 24-06-13
8	ISSUED FOR ADP 24-05-07
7	ISSUED FOR ADP 24-04-24
6	ISSUED FOR DP 24-03-04
5	ISSUED FOR COORDINATION 24-03-01
4	ISSUED FOR REVIEW 24-02-16
3	ISSUED FOR CPTED REVIEW 24-02-02
2	ISSUED FOR REVIEW 24-02-01
1	ISSUED FOR PRELIMINARY REVIEW 23-12-22

REVISIONS



200TH STREET & 53RD
AVENUE

5302 200th Street & 20011-31 53rd
Avenue
Langley, British Columbia

Scale:	1:150
Drawn:	MGC
Reviewed:	DS
Project No.	22-017

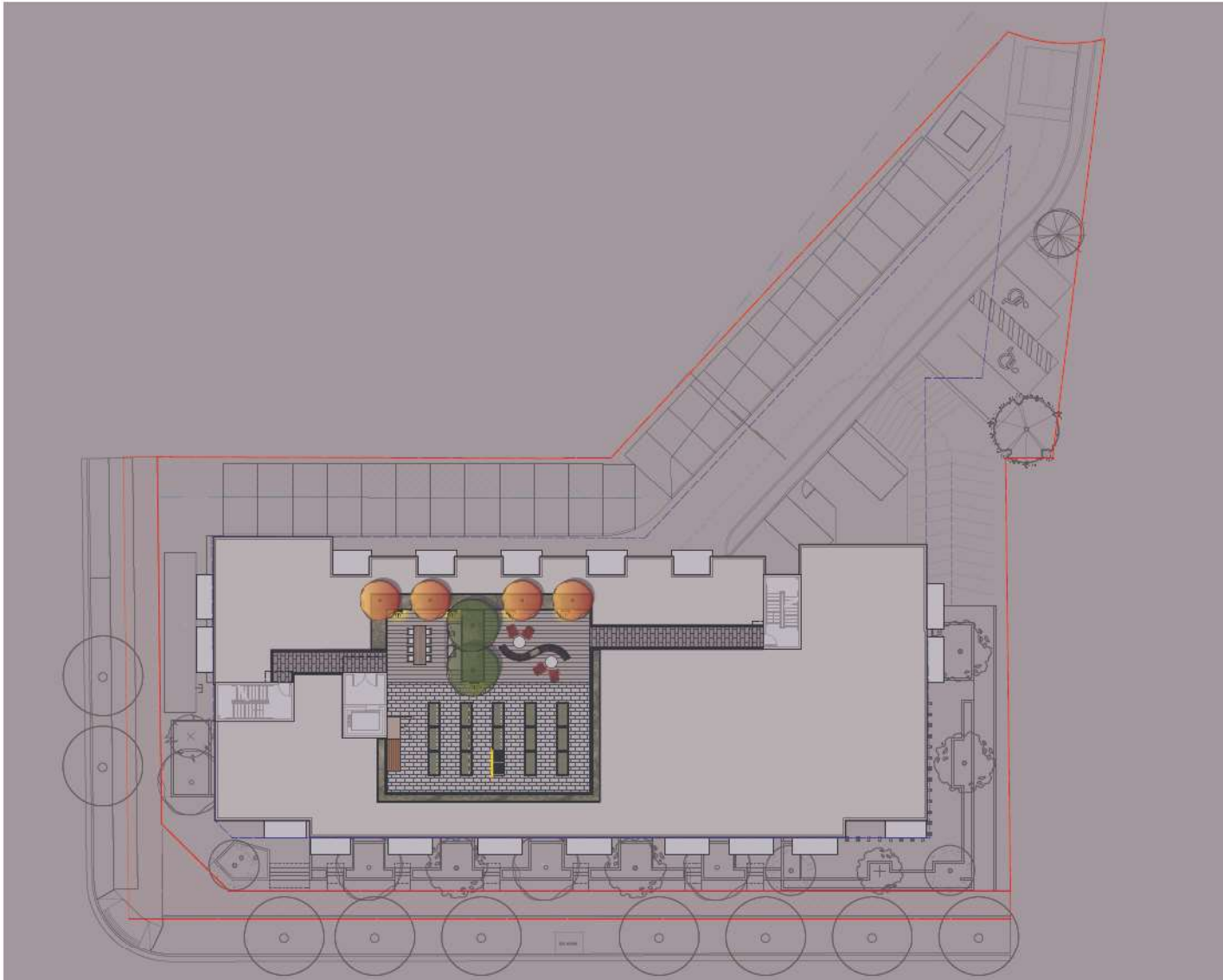
LIGHTING PLAN -
ROOF LEVEL

L4.1

LIGHTING LEGEND

SYMBOL	DESCRIPTION
	UPLIGHT
	WALL LIGHT
	BOLLARD LIGHT
	LED STRIP LIGHT
	METAL PLANTER-MOUNTED LIGHT

NOTE:
LIGHTING PLAN PROVIDED FOR INFORMATION ONLY. ELECTRICAL ENGINEER TO DESIGN SITE LIGHTING AND PROVIDE SPECS AND QUANTITIES DURING BUILDING PERMIT APPLICATION.



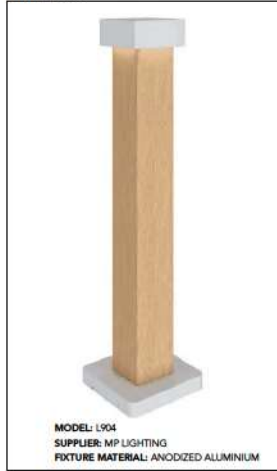
1 Lighting Plan - Roof
Scale: 1:150

LIGHTING MATERIALITY

WALL LIGHT



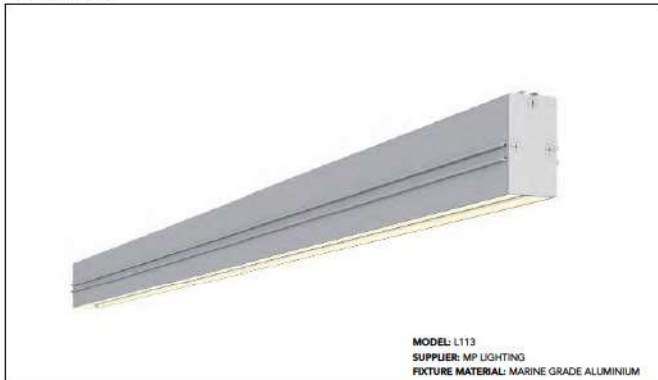
BOLLARD



PLANTER LIGHT



LINEAR LIGHT



UP LIGHT



David Stoyko
 Landscape Architect

2686 6TH AVENUE EAST
 VANCOUVER BC V6M 1R3
 P: 604.730.0048

DAVID STOYKO LANDSCAPE ARCHITECT DOES NOT GUARANTEE THE EXISTENCE, LOCATION, AND ELEVATION OF ANY ELEMENT AT THE PROJECT SITE, INCLUDING UTILITIES AND/OR CONCEALED STRUCTURES, OR THE ACCURACY OF ANY INFORMATION PROVIDED FROM OTHER CONSULTANTS OR SOURCES. THE CONTRACTOR IS RESPONSIBLE FOR VERIFYING ALL SITE CONDITIONS.

THESE DRAWINGS HAVE BEEN PREPARED FOR THE CLIENT FOR THIS PROJECT AND SHOULD NOT BE USED OTHERWISE WITHOUT PERMISSION.

DO NOT SCALE OFF OF THESE DRAWINGS. NO RESPONSIBILITY CAN BE TAKEN WITH ANY ERRORS BY MEASURING OFF OF THESE DRAWINGS.

NOT FOR CONSTRUCTION



12	
11	
10	RESPONSE TO ADP RECOMMENDATIONS 24-06-28
9	ISSUED FOR RESPONSE TO ADP 24-06-13
8	ISSUED FOR ADP 24-05-07
7	ISSUED FOR ADP 24-04-24
6	ISSUED FOR DP 24-03-04
5	ISSUED FOR COORDINATION 24-03-01
4	ISSUED FOR REVIEW 24-02-16
3	ISSUED FOR CPTED REVIEW 24-03-02
2	ISSUED FOR REVIEW 24-02-01
1	ISSUED FOR PRELIMINARY REVIEW 23-12-22
REVISIONS	



200TH STREET & 53RD AVENUE

5302 200th Street & 20011-31 53rd Avenue
 Langley, British Columbia

Scale:	NTS
Drawn:	MGC
Reviewed:	DS
Project No.:	22-017

LIGHTING MATERIALITY

DAVID STOYKO LANDSCAPE ARCHITECT DOES NOT GUARANTEE THE EXISTENCE, LOCATION, AND ELEVATION OF ANY ELEMENT AT THE PROJECT SITE, INCLUDING UTILITIES AND/OR CONCEALED STRUCTURES, OR THE ACCURACY OF ANY INFORMATION PROVIDED FROM OTHER CONSULTANTS OR SOURCES. THE CONTRACTOR IS RESPONSIBLE FOR VERIFYING ALL SITE CONDITIONS.

THESE DRAWINGS HAVE BEEN PREPARED FOR THE CLIENT FOR THIS PROJECT AND SHOULD NOT BE USED OTHERWISE WITHOUT PERMISSION.

DO NOT SCALE OFF OF THESE DRAWINGS. NO RESPONSIBILITY CAN BE TAKEN WITH ANY ERRORS BY MEASURING OFF OF THESE DRAWINGS.

NOT FOR CONSTRUCTION



12	
11	
10	RESPONSE TO ADP RECOMMENDATIONS 24-06-28
9	ISSUED FOR RESPONSE TO ADP 24-06-13
8	ISSUED FOR ADP 24-05-07
7	ISSUED FOR ADP 24-04-24
6	ISSUED FOR DP 24-03-04
5	ISSUED FOR COORDINATION 24-03-01
4	ISSUED FOR REVIEW 24-02-16
3	ISSUED FOR CPTED REVIEW 24-02-02
2	ISSUED FOR REVIEW 24-02-01
1	ISSUED FOR PRELIMINARY REVIEW 23-12-22
REVISIONS	



200TH STREET & 53RD
AVENUE

5302 200th Street & 20011-31 53rd
Avenue
Langley, British Columbia

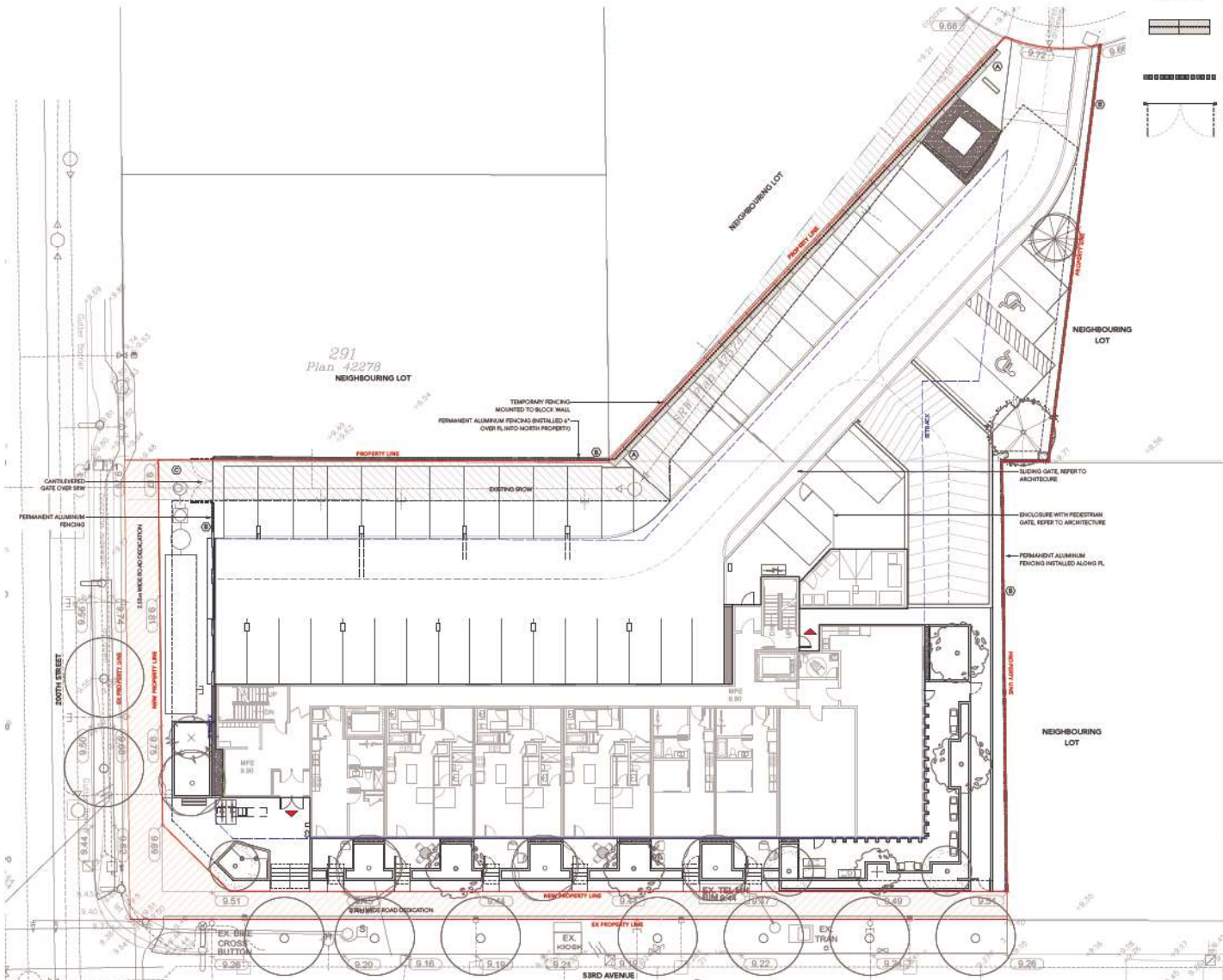
Scale:	
Drawn:	PP
Reviewed:	DS
Project No.:	22-017

FENCING PLAN -
LEVEL 1

L4.3

FENCING LEGEND

SYMBOL	KEY	DETAIL	DESCRIPTION
	A	2 L&A	ALUMINUM FENCE MOUNTED TO NO-POST BARRIERS PER PLANS AND DETAILS
	B	2 L&A	ALUMINUM FENCE ON GRADE PER PLANS AND DETAILS
	C	1 L&A	GATE PER PLANS AND DETAILS



1 Landscape Plan - Ground
Scale: 1:150



David Stoyko
Landscape Architect

2886 5TH AVENUE EAST
VANCOUVER BC V6M 1R3
P.604.733.0448

DAVID STOYKO LANDSCAPE ARCHITECT DOES NOT GUARANTEE THE EXISTENCE, LOCATION, AND ELEVATION OF ANY ELEMENT AT THE PROJECT SITE, INCLUDING UTILITIES AND/OR CONCEALED STRUCTURES, OR THE ACCURACY OF ANY INFORMATION PROVIDED FROM OTHER CONSULTANTS OR SOURCES. THE CONTRACTOR IS RESPONSIBLE FOR VERIFYING ALL SITE CONDITIONS.

THESE DRAWINGS HAVE BEEN PREPARED FOR THE CLIENT FOR THIS PROJECT AND SHOULD NOT BE USED OTHERWISE WITHOUT PERMISSION.

DO NOT SCALE OFF OF THESE DRAWINGS. NO RESPONSIBILITY CAN BE TAKEN WITH ANY ERRORS BY MEASURING OFF OF THESE DRAWINGS.

NOT FOR CONSTRUCTION



12	
11	
10	RESPONSE TO ADP RECOMMENDATIONS 24-06-28
9	ISSUED FOR RESPONSE TO ADP 24-06-13
8	ISSUED FOR ADP 24-05-07
7	ISSUED FOR ADP 24-04-24
6	ISSUED FOR DP 24-03-04
5	ISSUED FOR COORDINATION 24-03-01
4	ISSUED FOR REVIEW 24-02-16
3	ISSUED FOR CPED REVIEW 24-02-02
2	ISSUED FOR REVIEW 24-02-01
1	ISSUED FOR PRELIMINARY REVIEW 23-12-22

REVISIONS



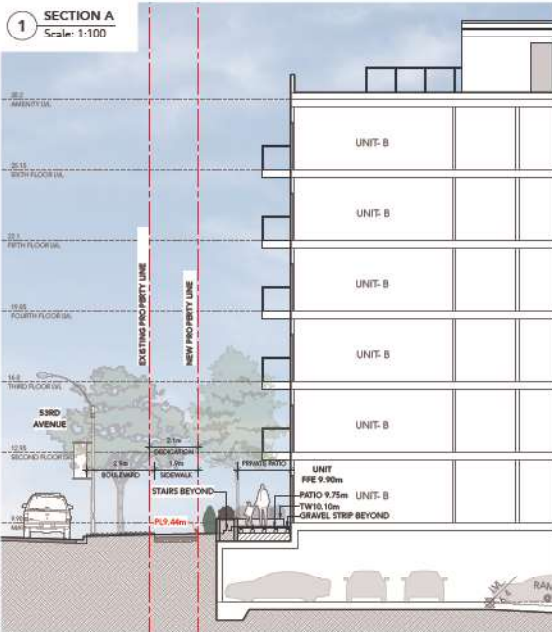
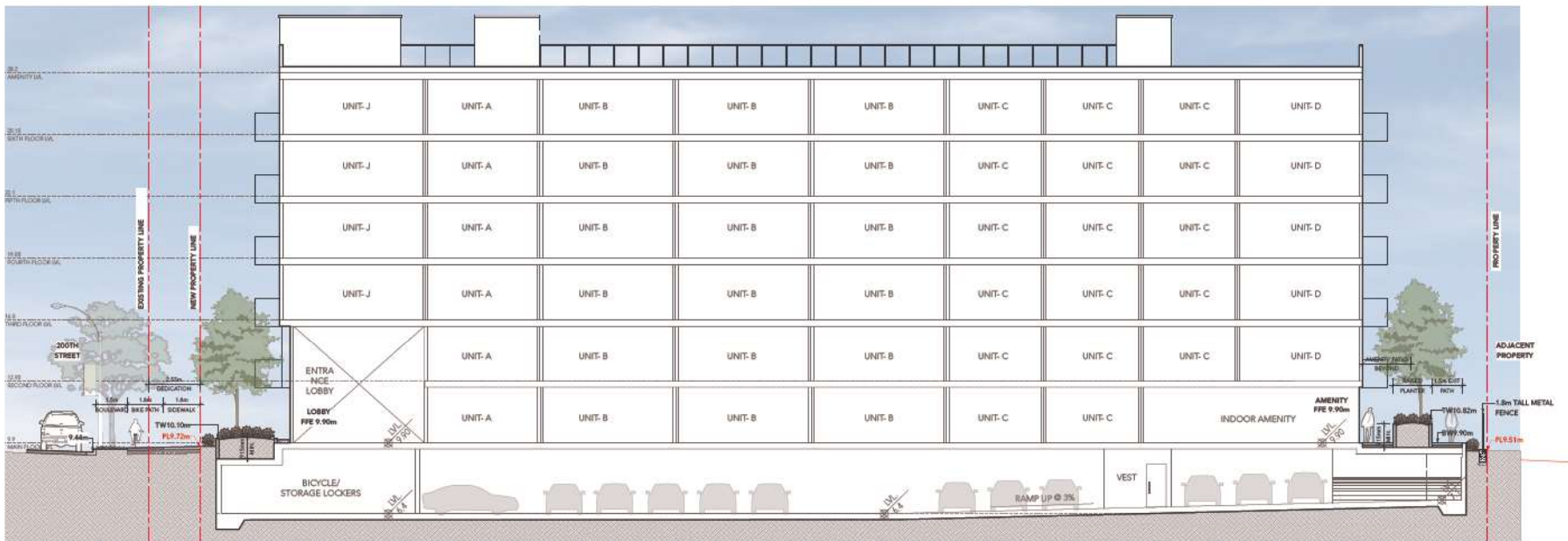
200TH STREET & 53RD AVENUE

5302 200th Street & 20011-31 53rd Avenue
Langley, British Columbia

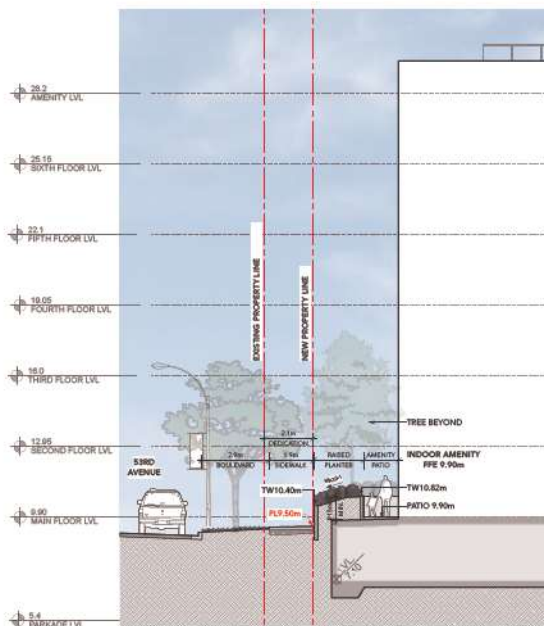
Scale:	
Drawn:	PP
Reviewed:	DS
Project No.:	22-017

SECTIONS

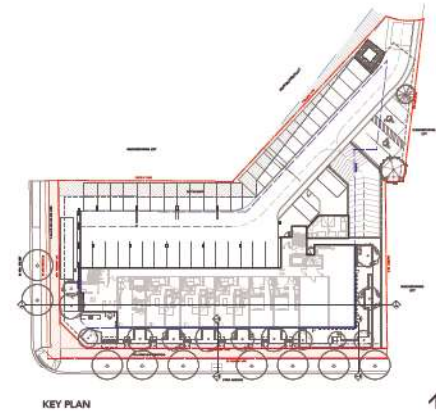
L5.0



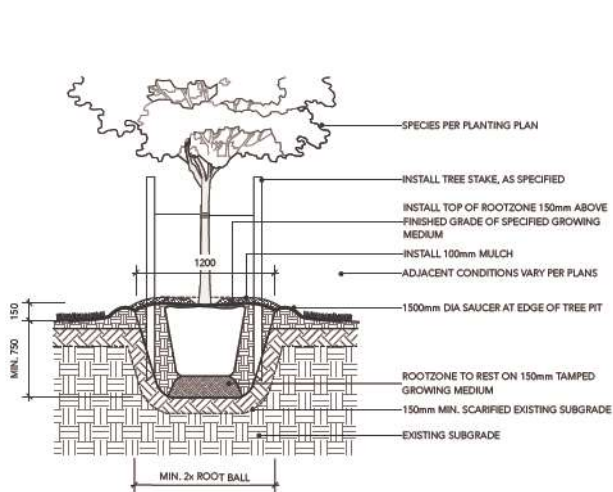
2 SECTION B
Scale: 1:100



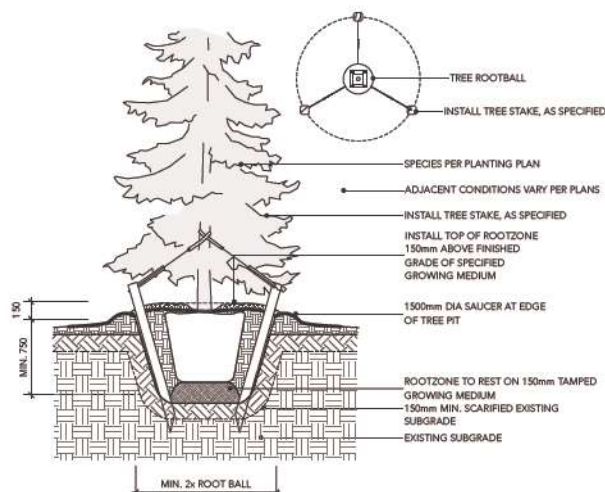
3 SECTION C
Scale: 1:100



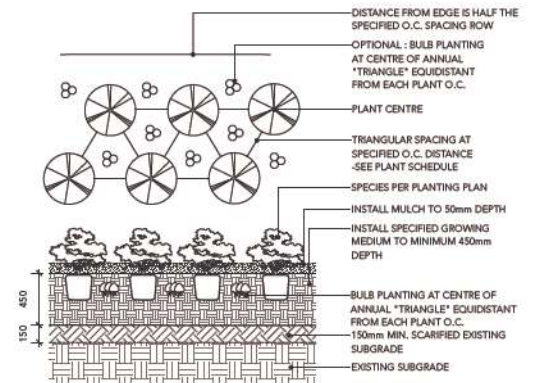
KEY PLAN



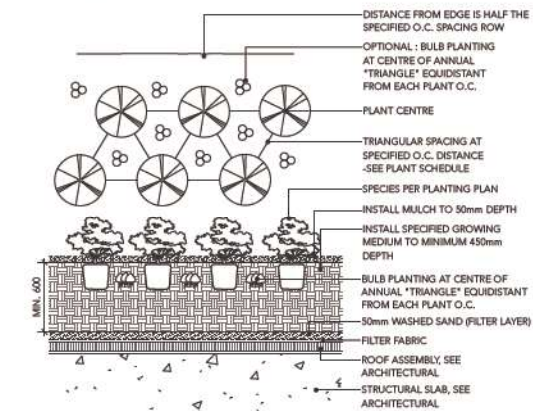
1 DECIDUOUS TREE PLANTING ON GRADE (TYPICAL)
Scale: 1:20



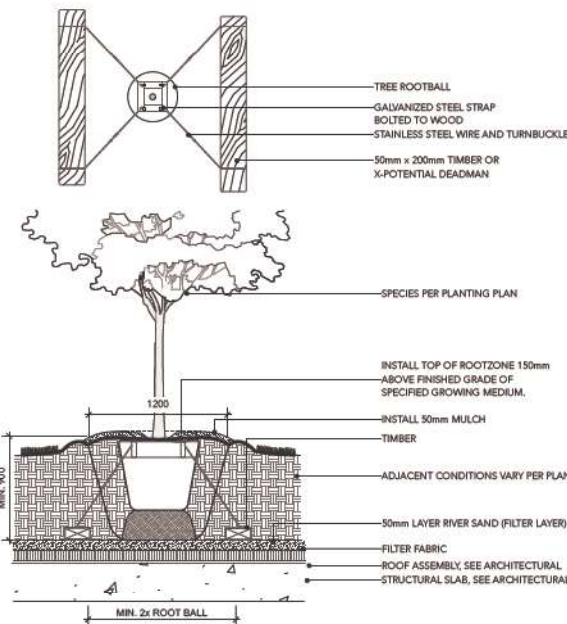
3 CONIFEROUS TREE PLANTING ON GRADE (TYPICAL)
Scale: 1:20



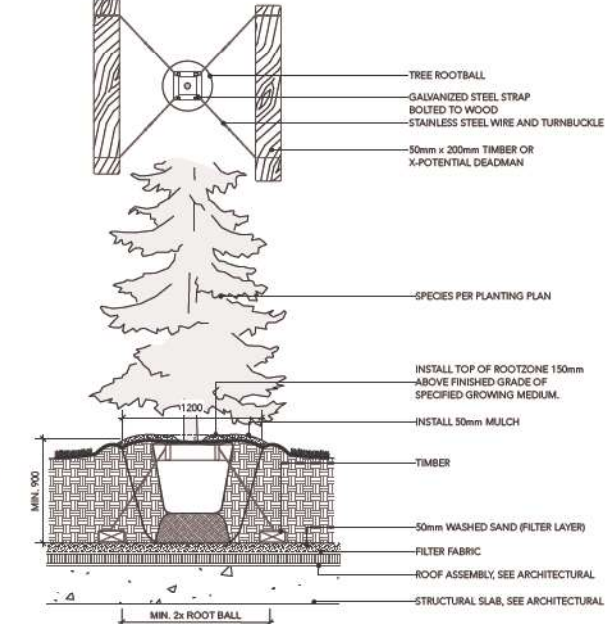
5 PLANTING ON GRADE (TYPICAL)
Scale: 1:20



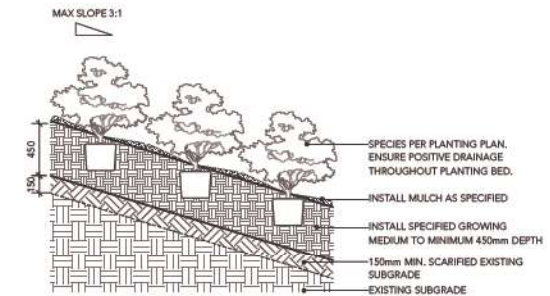
6 PLANTING ON SLAB (TYPICAL)
Scale: 1:20



2 DECIDUOUS TREE PLANTING ON SLAB (TYPICAL)
Scale: 1:20



4 CONIFEROUS TREE PLANTING ON SLAB (TYPICAL)
Scale: 1:20



7 PLANTING ON SLOPE (TYPICAL)
Scale: 1:20

DAVID STOYKO LANDSCAPE ARCHITECT DOES NOT GUARANTEE THE EXISTENCE, LOCATION, AND ELEVATION OF ANY ELEMENT AT THE PROJECT SITE, INCLUDING UTILITIES AND/OR CONCEALED STRUCTURES, OR THE ACCURACY OF ANY INFORMATION PROVIDED FROM OTHER CONSULTANTS OR SOURCES. THE CONTRACTOR IS RESPONSIBLE FOR VERIFYING ALL SITE CONDITIONS.

THESE DRAWINGS HAVE BEEN PREPARED FOR THE CLIENT BY THIS PROJECT, AND SHOULD NOT BE USED OTHERWISE WITHOUT PERMISSION.

DO NOT SCALE OFF OF THESE DRAWINGS. NO RESPONSIBILITY CAN BE TAKEN WITH ANY ERRORS BY MEASURING OFF OF THESE DRAWINGS.

NOT FOR CONSTRUCTION



12	
11	
10	RESPONSE TO ADP RECOMMENDATIONS 24-06-28
9	ISSUED FOR RESPONSE TO ADP 24-06-13
8	ISSUED FOR ADP 24-05-07
7	ISSUED FOR ADP 24-04-24
6	ISSUED FOR DP 24-03-04
5	ISSUED FOR COORDINATION 24-03-01
4	ISSUED FOR REVIEW 24-02-16
3	ISSUED FOR CPED REVIEW 24-02-02
2	ISSUED FOR REVIEW 24-02-01
1	ISSUED FOR PRELIMINARY REVIEW 23-12-22

REVISIONS

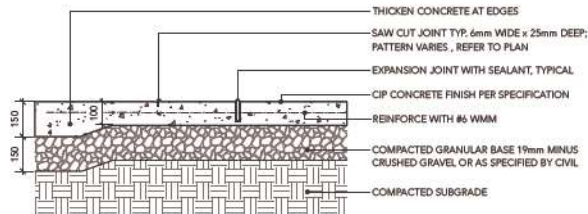


200TH STREET & 53RD AVENUE

5302 200TH Street & 20011-31 53RD Avenue
Langley, British Columbia

Scale:
Drawn:
Reviewed: DS
Project No. 22-017

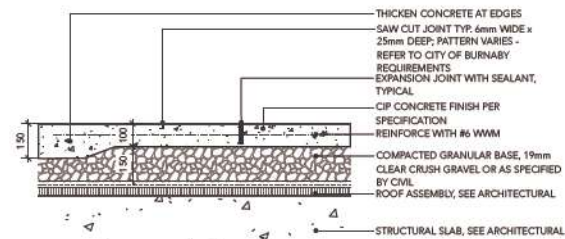
DETAILS - PLANTING



NOTES:
 1. EXPANSION JOINTS 6m O.C. MAX, CONTROL JOINTS @ 1.5m O.C. ADJUST TO SUIT SITE LAYOUT PLAN.
 2. ALL SCORELINES TO BE APPROVED BY LANDSCAPE ARCHITECT ON-SITE PRIOR TO INSTALLATION.

1 CIP CONCRETE ON GRADE (TYPICAL)

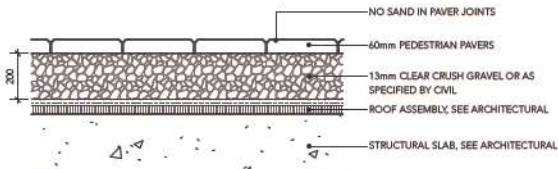
Scale: 1:10



NOTES:
 1. EXPANSION JOINTS 6m O.C. MAX, CONTROL JOINTS @ 1.5m O.C. ADJUST TO SUIT SITE LAYOUT PLAN.
 2. ALL SCORELINES TO BE APPROVED BY LANDSCAPE ARCHITECT ON-SITE PRIOR TO INSTALLATION.

2 CIP CONCRETE ON SLAB (TYPICAL)

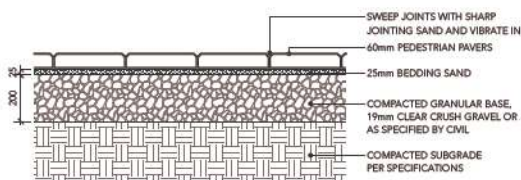
Scale: 1:10



NOTE:
 USE CONCRETE HIDDEN EDGE RESTRAINT WHEN PAVERS ARE NOT ADJACENT TO A SOLID EDGE CONDITION.

3 PEDESTRIAN UNIT PAVERS ON SLAB (TYPICAL)

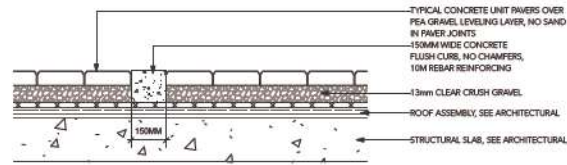
Scale: 1:10



NOTE:
 USE CONCRETE HIDDEN EDGE RESTRAINT WHEN PAVERS ARE NOT ADJACENT TO A SOLID EDGE CONDITION.

4 PEDESTRIAN UNIT PAVERS ON GRADE (TYPICAL)

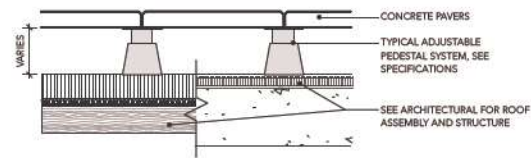
Scale: 1:10



5 CIP PAVES EDGE BAND

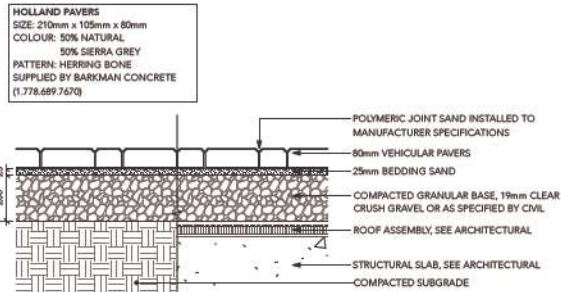
Scale: 1:10

SLAB PAVERS (TYPE 1) TYPE: TEXADA SLAB PAVERS SIZE: 24"x24" (610MM X 610MM X 50MM) PATTERN: GRID COLOUR: NATURAL MANUFACTURER: BELGARD (1.800.663.4091).	SLAB PAVERS (TYPE 2) TYPE: TEXADA SLAB PAVERS SIZE: 12"x24" (305MM X 610MM X 50MM) PATTERN: RUNNING BOND COLOUR: NATURAL MANUFACTURER: BELGARD (1.800.663.4091).
SLAB PAVERS (TYPE 3) TYPE: TEXADA SLAB PAVERS SIZE: 12"x24" (305MM X 610MM X 50MM) PATTERN: RUNNING BOND COLOUR: CHARCOAL MANUFACTURER: BELGARD (1.800.663.4091).	



6 HYDRAPRESSED CONCRETE PAVERS ON PEDESTALS

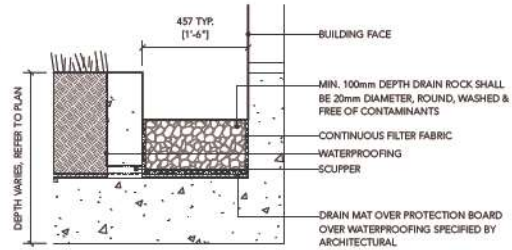
Scale: 1:10



NOTE:
 USE CONCRETE HIDDEN EDGE RESTRAINT WHEN PAVERS ARE NOT ADJACENT TO A SOLID EDGE CONDITION.

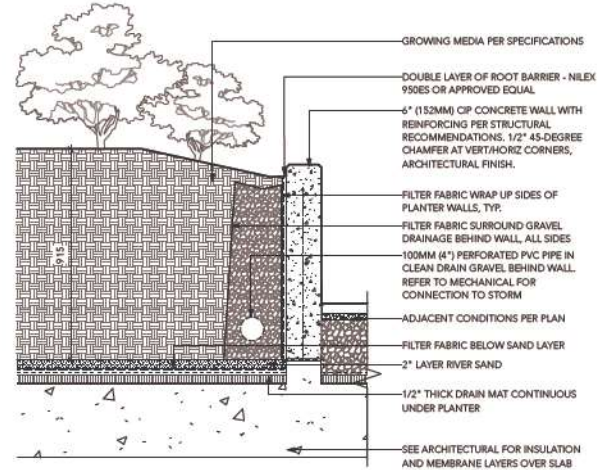
7 VEHICULAR CONCRETE UNIT PAVERS (TYPICAL)

Scale: 1:10



8 GRAVEL DRAIN STRIP - ON SLAB

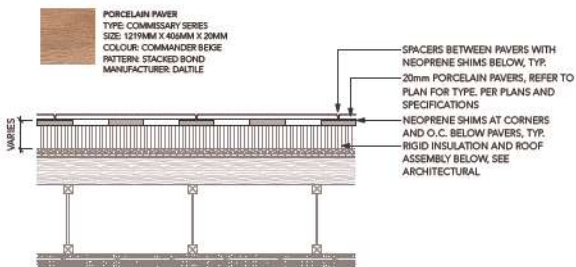
Scale: 1:10



NOTE:
 1. WALLS MAX 600MM HEIGHT. GUARDRAIL REQUIRED WHERE WALL HEIGHTS EXCEED 600MM.

9 TYPICAL RETAINING WALL ON SLAB

Scale: 1:10



NOTE:
 1. TYPICAL ADJUSTABLE PEDESTAL SYSTEM TO BE USED WHERE DEPTH EXCEEDS HEIGHT FOR SHIMS. SEE SPECIFICATIONS.

10 PORCELAIN PAVERS

Scale: 1:10

DAVID STOYKO LANDSCAPE ARCHITECT DOES NOT GUARANTEE THE EXISTENCE, LOCATION, AND ELEVATION OF ANY ELEMENT AT THE PROJECT SITE, INCLUDING UTILITIES AND/OR CONCEALED STRUCTURES, OR THE ACCURACY OF ANY INFORMATION PROVIDED FROM OTHER CONSULTANTS OR SOURCES. THE CONTRACTOR IS RESPONSIBLE FOR VERIFYING ALL SITE CONDITIONS.

THESE DRAWINGS HAVE BEEN PREPARED FOR THE CLIENT FOR THIS PROJECT, AND SHOULD NOT BE USED OTHERWISE WITHOUT PERMISSION.

DO NOT SCALE OFF OF THESE DRAWINGS. NO RESPONSIBILITY CAN BE TAKEN WITH ANY ERRORS BY MEASURING OFF OF THESE DRAWINGS.

NOT FOR CONSTRUCTION



12	
11	
10	RESPONSE TO ADP RECOMMENDATIONS 24-06-28
9	ISSUED FOR RESPONSE TO ADP 24-06-13
8	ISSUED FOR ADP 24-05-07
7	ISSUED FOR ADP 24-04-24
6	ISSUED FOR DP 24-03-04
5	ISSUED FOR COORDINATION 24-03-01
4	ISSUED FOR REVIEW 24-02-16
3	ISSUED FOR CPED REVIEW 24-02-02
2	ISSUED FOR REVIEW 24-02-01
1	ISSUED FOR PRELIMINARY REVIEW 23-12-22
REVISIONS	

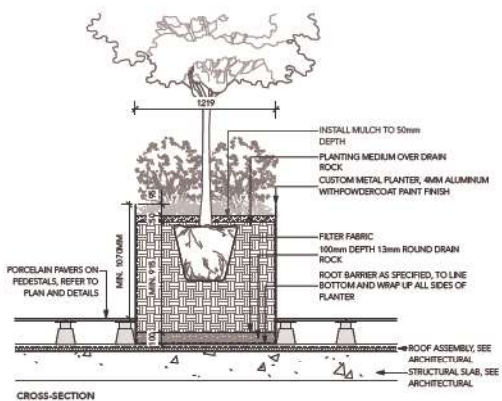


200TH STREET & 53RD AVENUE

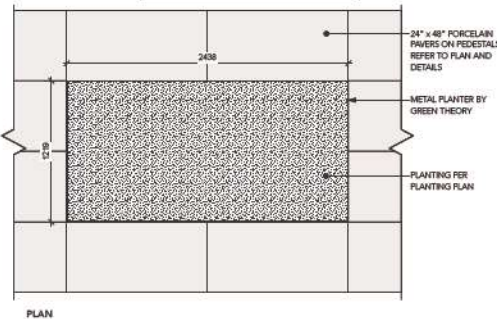
5302 200th Street & 20011-31 53rd Avenue
 Langley, British Columbia

Scale:
 Drawn:
 Reviewed: DS
 Project No. 22-017

DETAILS -
 HARDSCAPE

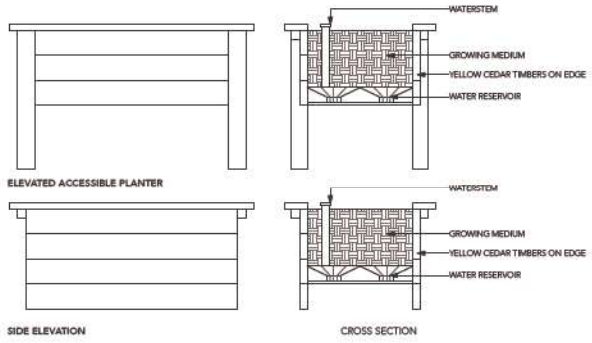
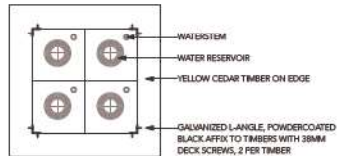


GREEN THEORY RAISED METAL PLANTER
 COLOUR: GREY
 MATERIAL: METAL
 SIZE: 3' H X 4' W X 8' L
 SUPPLIED BY GREEN THEORY (604) 475-7002



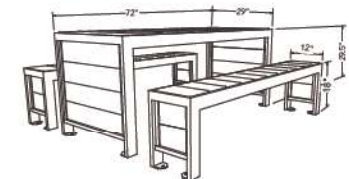
1 GREEN THEORY METAL PLANTER
 Scale: 1:20

HEIRLOOM SELF-WATERING PLANTER
 COLOUR: TBD
 SUPPLIER: LIFESPACE GARDENS



4 URBAN AGRICULTURE PLANTER BY LIFESAPCE
 Scale: 1:20

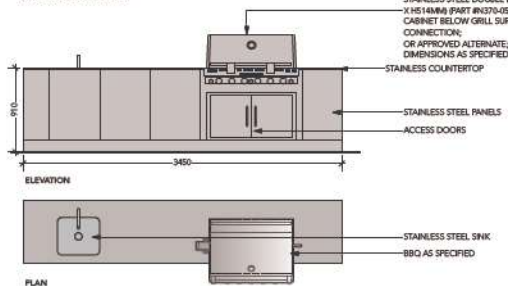
URBAN FARM HARVEST PICNIC TABLE
 COLOUR: SILVER / GREY
 SUPPLIER: WISHBONE (604-626-0474)



7 HARVEST TABLE AND SEATING
 Scale: 1:20

CUSTOM BBQ ISLAND PROVIDED AND INSTALLED BY SHERWOOD OUTDOOR KITCHENS CONTACT: 778-855-4372 OR APPROVED ALTERNATE

BUILT-IN BBQ GRILL: NAPOLEON LEX 605 BUILT-IN NATURAL GAS GRILL WITH SEARING BURNER & INFRARED REAR BURNER, WITH NAPOLEON STAINLESS STEEL DOUBLE DOOR LARGE (W959MM X H514MM) PART #NS7D-0508 CABINET BELOW GRILL SURFACE - GAS CONNECTION, OR APPROVED ALTERNATE, DIMENSIONS AS SPECIFIED BY MANUFACTURER

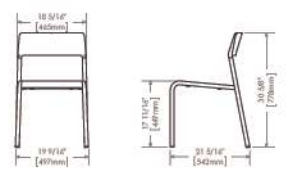


NOTE:
 1. MANUAL SHUT OFF VALVE TO BE PROVIDED FOR GAS BARBECUE CONNECTION.
 2. BARBECUE GRILL TO BE INSTALLED AS PER MANUFACTURER'S INSTRUCTION.
 3. REFER TO MECHANICAL DRAWINGS FOR GAS CONNECTIONS.
 4. CONTRACTOR AND STRUCTURAL TO PROVIDE SHOP DRAWINGS FOR LANDSCAPE CONSULTANT REVIEW AND APPROVAL PRIOR TO FABRICATION OF CUSTOM COUNTER AND BARBECUE ELEMENTS.

8 BBQ AND COUNTER
 Scale: 1:25



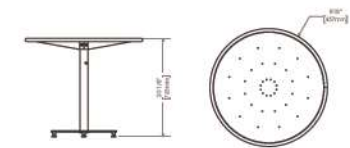
FORO SERIES
 MCH-1700-00001
 CHAIRS
 COLOUR: STANDARD SILVER
 SUPPLIER: MAGLIN SITE FURNISHINGS



2 BISTRO CHAIR
 Scale: 1:20



FORO SERIES
 MTB-1700-00746 36" TABLE
 COLOUR: STANDARD SILVER/GREY
 SUPPLIER: MAGLIN SITE FURNISHINGS



3 BISTRO TABLE
 Scale: 1:20



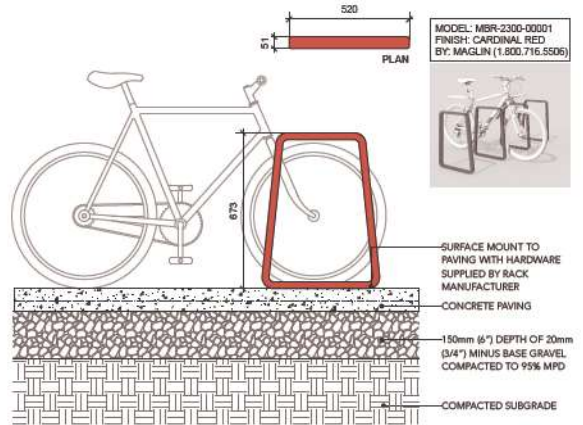
MODEL LOLLYDAGGER COCKTAIL TABLE (ROUND)
 COLOUR: APPLE RED
 MANUFACTURER: LOLL DESIGNS (877-740-3387)
 SUPPLIER: VANCOUVER SPECIAL (604-566-3673)

5 OUTDOOR COFFEE TABLE
 Scale: 1:20



MODEL ODDEN MODULAR SEATING (60 DEGREE)
 COLOURS: POWDER COAT METAL "CARDINAL RED", THERMALLY MODIFIED ASH WOOD SLATS
 MANUFACTURER: MAGLIN (1-800-716-5504)

6 LOUNGE FURNITURE
 Scale: 1:20



9 BIKE RACK
 Scale: 1:10

DAVID STOYKO LANDSCAPE ARCHITECT DOES NOT GUARANTEE THE EXISTENCE, LOCATION, AND ELEVATION OF ANY ELEMENT AT THE PROJECT SITE, INCLUDING UTILITIES AND/OR CONCEALED STRUCTURES, OR THE ACCURACY OF ANY INFORMATION PROVIDED FROM OTHER CONSULTANTS OR SOURCES. THE CONTRACTOR IS RESPONSIBLE FOR VERIFYING ALL SITE CONDITIONS.

THESE DRAWINGS HAVE BEEN PREPARED FOR THE CLIENT FOR THE PROJECT, AND SHOULD NOT BE REUSED OTHERWISE WITHOUT PERMISSION.

DO NOT SCALE OFF OF THESE DRAWINGS. NO RESPONSIBILITY CAN BE TAKEN WITH ANY ERRORS BY MEASURING OFF OF THESE DRAWINGS.

NOT FOR CONSTRUCTION



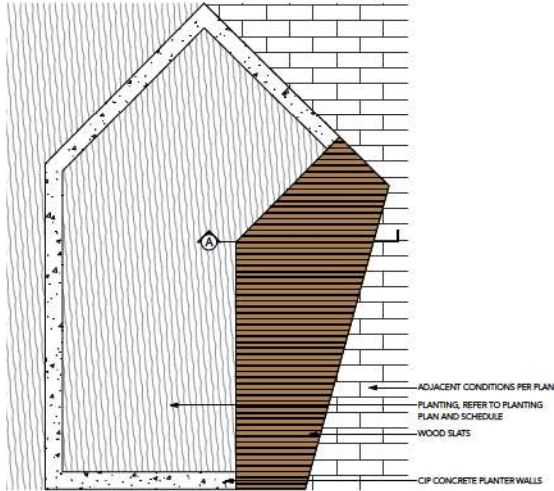
12	
11	
10	RESPONSE TO ADP RECOMMENDATIONS 24-06-28
9	ISSUED FOR RESPONSE TO ADP 24-06-13
8	ISSUED FOR ADP 24-05-07
7	ISSUED FOR ADP 24-04-24
6	ISSUED FOR DP 24-03-04
5	ISSUED FOR COORDINATION 24-03-01
4	ISSUED FOR REVIEW 24-02-16
3	ISSUED FOR CPTEED REVIEW 24-02-02
2	ISSUED FOR REVIEW 24-02-01
1	ISSUED FOR PRELIMINARY REVIEW 23-12-22
REVISIONS	



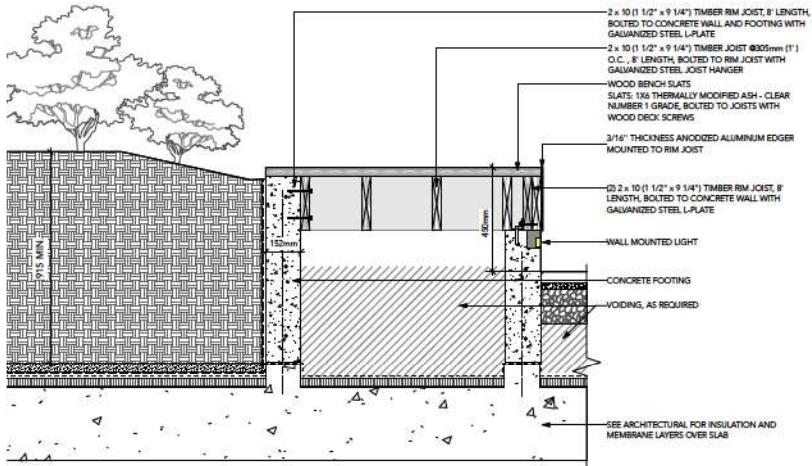
200TH STREET & 53RD AVENUE
 5302 200TH Street & 20011-31 53RD Avenue
 Langley, British Columbia

Scale:
 Drawn:
 Reviewed: DS
 Project No. 22-017

DETAILS - FURNISHINGS



PLAN
1:20



- NOTES:
 1. DECKING TO BE 1X6 THERMALLY MODIFIED ASH - CLEAR NUMBER 1 GRADE
 2. PRE-DRILL HOLES FOR ALL SCREWS.

1 LOBBY ENTRY SEATING PLATFORM (SECTION A)
 Scale: 1:10



MODEL: WESTERN RED CEDAR GRAND GARDEN CHALET
 MANUFACTURER: OUTDOOR LIVING TODAY (888-658-1658)
 SIZE: 3'X6'
 MATERIAL: WESTERN RED CEDAR; PAINTED (COLOUR TBD)
 SUPPLIER: THE HOME DEPOT (1-800-608-1423) OR APPROVED ALTERNATE

2 URBAN AGRICULTURE STORAGE SHED
 Scale: NTS



HUTCH BACKLESS BENCH
 COLOUR: SAND / BROWN SLATE
 LENGTH: 5 FT
 WOOD: MODIFIED PINE (NATURAL)
 SUPPLIER: WISHBONE (604-626-0476)

3 BACKLESS BENCH
 Scale: NTS



MODEL: ADIRONDACK CHAIR (CURVED)
 SUPPLIER: LOLL DESIGNS
 COLOUR: APPLE RED
 SUPPLIER: VANCOUVER SPECIAL (604-568-3673)

4 ADIRONDACK CHAIRS
 Scale: NTS

David Stoyko
 Landscape Architect

2886 6TH AVENUE EAST
 VANCOUVER BC V6M 1R5
 P: 604.730.0048

DAVID STOYKO LANDSCAPE ARCHITECT DOES NOT GUARANTEE THE EXISTENCE, LOCATION, AND DIMENSION OF ANY ELEMENT AT THE PROJECT SITE, INCLUDING UTILITIES AND/OR CONCEALED STRUCTURES, OR THE ACCURACY OF ANY INFORMATION PROVIDED FROM OTHER CONSULTANTS OR SOURCES. THE CONTRACTOR IS RESPONSIBLE FOR VERIFYING ALL SITE CONDITIONS.

THESE DRAWINGS HAVE BEEN PREPARED FOR THE CLIENT BY THE PROJECT ARCHITECT AND SHOULD NOT BE USED OTHERWISE WITHOUT PERMISSION.

DO NOT SCALE OFF OF THESE DRAWINGS. NO RESPONSIBILITY CAN BE TAKEN WITH ANY ERRORS BY MEASURING OFF OF THESE DRAWINGS.

NOT FOR CONSTRUCTION



12	
11	
10	RESPONSE TO ADP RECOMMENDATIONS 24-06-28
9	ISSUED FOR RESPONSE TO ADP 24-08-13
8	ISSUED FOR ADP 24-06-27
7	ISSUED FOR ADP 24-04-24
6	ISSUED FOR DP 24-03-04
5	ISSUED FOR COORDINATION 24-03-01
4	ISSUED FOR REVIEW 24-02-16
3	ISSUED FOR CPTEED REVIEW 24-02-02
2	ISSUED FOR REVIEW 24-02-01
1	ISSUED FOR PRELIMINARY REVIEW 23-12-22
REVISIONS	

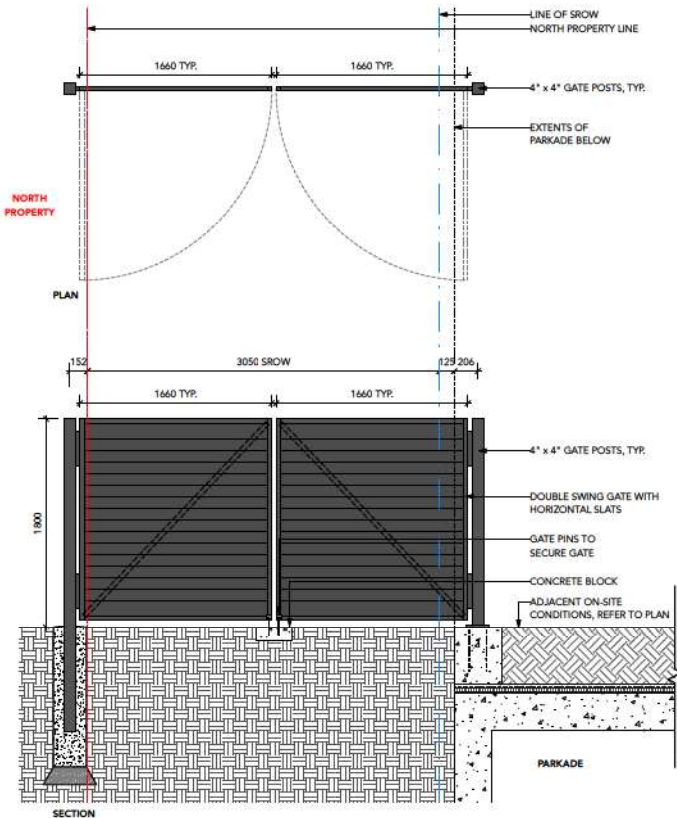


200TH STREET & 53RD
 AVENUE

5302 200TH Street & 20011-31 53RD
 Avenue
 Langley, British Columbia

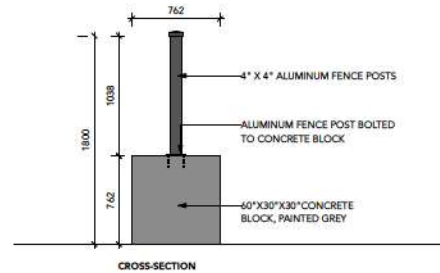
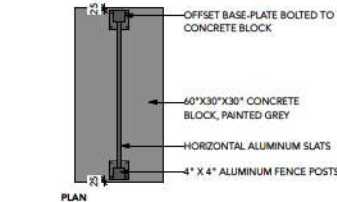
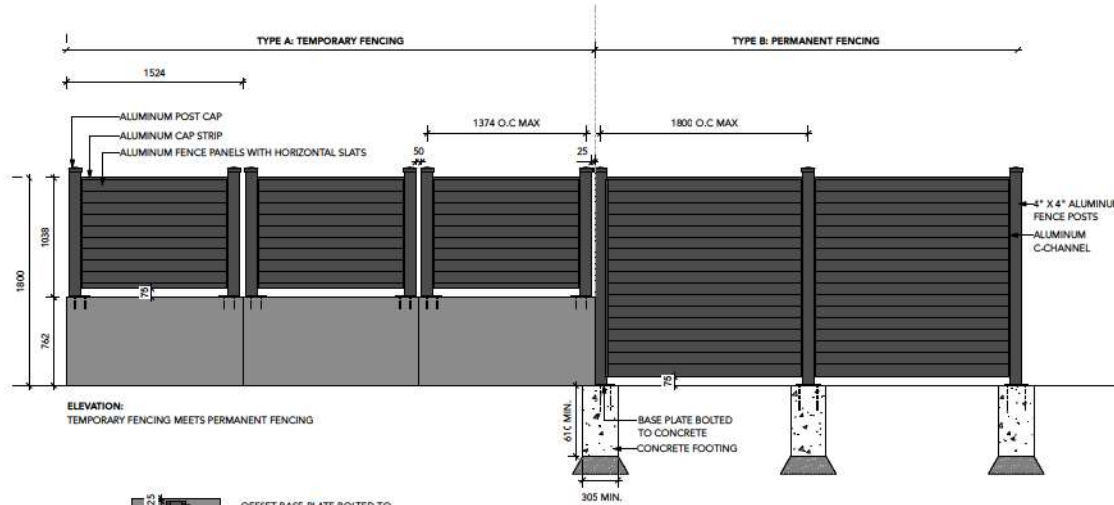
Scale:	
Drawn:	
Reviewed:	DS
Project No.	22-017

DETAILS -
 FURNISHINGS



- NOTE:**
1. PROVIDE SHOP DRAWINGS FOR REVIEW PRIOR TO CONSTRUCTION.
 2. ALL METAL COMPONENTS TO BE ALUMINUM WITH POWDER COAT FINISH, COLOUR TBD.
 3. PROVIDE ISOLATION MATERIAL FOR FASTENERS TO AVOID ELECTROLYSIS.

1 CANTILEVERED GATE OVER SROW
Scale: 1:20



- NOTE:**
1. PROVIDE SHOP DRAWINGS FOR REVIEW PRIOR TO CONSTRUCTION.
 2. ALL METAL COMPONENTS TO BE ALUMINUM.
 3. PROVIDE ISOLATION MATERIAL FOR FASTENERS TO AVOID ELECTROLYSIS.
 4. COLOUR OF ALUMINUM FENCING TBD.
 5. APPLY A MINIMUM OF TWO COATS OF ANTI-GRAFFITI PAINT TO CONCRETE BLOCKS.
 6. REFER TO PLANS FOR FENCING TYPE LOCATIONS.

2 ALUMINUM FENCE
Scale: 1:20



FENCING PRECEDENT - HORIZONTAL SLATS

David Stoyko
Landscape Architect

2886 6TH AVENUE EAST
VANCOUVER BC V6M 1R5
P. 604.730.0248

DAVID STOYKO LANDSCAPE ARCHITECT DOES NOT GUARANTEE THE EXISTENCE, LOCATION, AND DIMENSION OF ANY ELEMENT AT THE PROJECT SITE, INCLUDING UTILITIES AND/OR CONCEALED STRUCTURES, OR THE ACCURACY OF ANY INFORMATION PROVIDED FROM OTHER CONSULTANTS OR SOURCES. THE CONTRACTOR IS RESPONSIBLE FOR VERIFYING ALL SITE CONDITIONS.

THESE DRAWINGS HAVE BEEN PREPARED FOR THE CLIENT FOR THE PROJECT, AND SHOULD NOT BE USED OTHERWISE WITHOUT PERMISSION.

DO NOT SCALE OFF OF THESE DRAWINGS. NO RESPONSIBILITY CAN BE TAKEN WITH ANY ERRORS BY MEASURING OFF OF THESE DRAWINGS.

NOT FOR CONSTRUCTION



12	
11	
10	RESPONSE TO ADP RECOMMENDATIONS 24-06-28
9	ISSUED FOR RESPONSE TO ADP 24-08-13
8	ISSUED FOR ADP 24-06-27
7	ISSUED FOR ADP 24-04-24
6	ISSUED FOR DP 24-03-04
5	ISSUED FOR COORDINATION 24-03-01
4	ISSUED FOR REVIEW 24-02-16
3	ISSUED FOR CPTED REVIEW 24-02-02
2	ISSUED FOR REVIEW 24-02-01
1	ISSUED FOR PRELIMINARY REVIEW 23-12-22
REVISIONS	

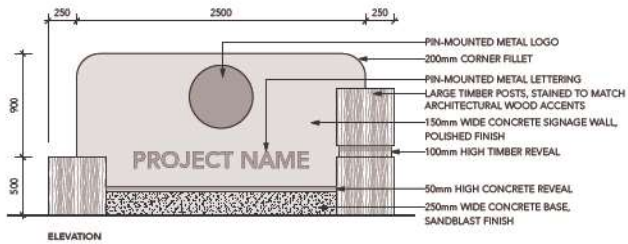
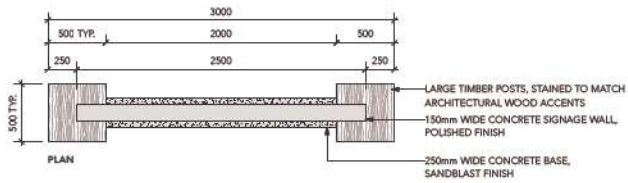


200TH STREET & 53RD AVENUE

5302 200th Street & 20011-31 53rd Avenue
Langley, British Columbia

Scale:
Drawn:
Reviewed: DS
Project No. 22-017

DETAILS - FENCING



NOTES:

1. PROVIDE SHOP DRAWINGS FOR REVIEW PRIOR TO CONSTRUCTION.
2. METAL LOGO AND LETTERING DESIGN TBC.
3. SIGN REINFORCING AND FOOTINGS TO BE REVIEWED AND DESIGNED BY STRUCTURAL.

1 PROJECT ENTRY SIGNAGE

Scale: 1:20

David Stoyko
Landscape Architect

2585 6TH AVENUE EAST
VANCOUVER BC V6M 1R5
P: 604.750.0948

DAVID STOYKO LANDSCAPE ARCHITECT DOES NOT GUARANTEE THE EXISTENCE, LOCATION, AND ELEVATION OF ANY ELEMENT AT THE PROJECT SITE, INCLUDING UTILITIES AND/OR CONCEALED STRUCTURES, OR THE ACCURACY OF ANY INFORMATION PROVIDED FROM OTHER CONSULTANTS OR SOURCES. THE CONTRACTOR IS RESPONSIBLE FOR VERIFYING ALL SITE CONDITIONS.

THESE DRAWINGS HAVE BEEN PREPARED FOR THE CLIENT FOR THIS PROJECT, AND SHOULD NOT BE USED OTHERWISE WITHOUT PERMISSION.

DO NOT SCALE OFF OF THESE DRAWINGS. NO RESPONSIBILITY CAN BE TAKEN WITH ANY ERRORS BY MEASURING OFF OF THESE DRAWINGS.

NOT FOR CONSTRUCTION



12

11

10 RESPONSE TO ADP RECOMMENDATIONS 24-06-28

9 ISSUED FOR RESPONSE TO ADP 24-06-13

8 ISSUED FOR ADP 24-05-07

7 ISSUED FOR ADP 24-04-24

6 ISSUED FOR DP 24-03-04

5 ISSUED FOR COORDINATION 24-03-01

4 ISSUED FOR REVIEW 24-02-16

3 ISSUED FOR CPTED REVIEW 24-02-02

2 ISSUED FOR REVIEW 24-02-01

1 ISSUED FOR PRELIMINARY REVIEW 23-12-22

REVISIONS



200TH STREET & 53RD
AVENUE

5302 200th Street & 20011-31 53rd
Avenue
Langley, British Columbia

Scale:

Drawn:

Reviewed: DS

Project No. 22-017

DETAILS - SIGNAGE

L6.5