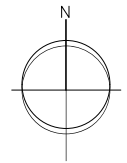


METAL FENCES  
3'-6" HIGH AND 6'-0" HIGH

IT IS ABSOLUTELY RECOMMENDED THAT TREE ROOT BARRIERS BE INSTALLED ALONG THE PROPERTY LINE AS A MEANS OF PROTECTING THE BUILDINGS ON THE ADJACENT PROPERTY



DATE	REVISION	NO.
nov/24	CITY COMMENTS	6
oct/24	revised site plan	5
sep/24	revised site plan	4
may/24	revised site plan	3
dec/23	revised site plan	2
nov/23	revised site plan	1

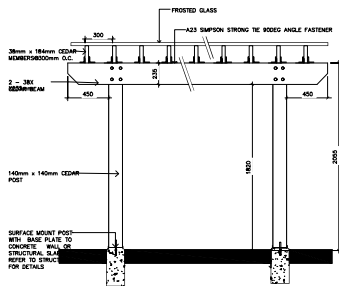
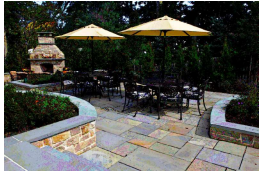
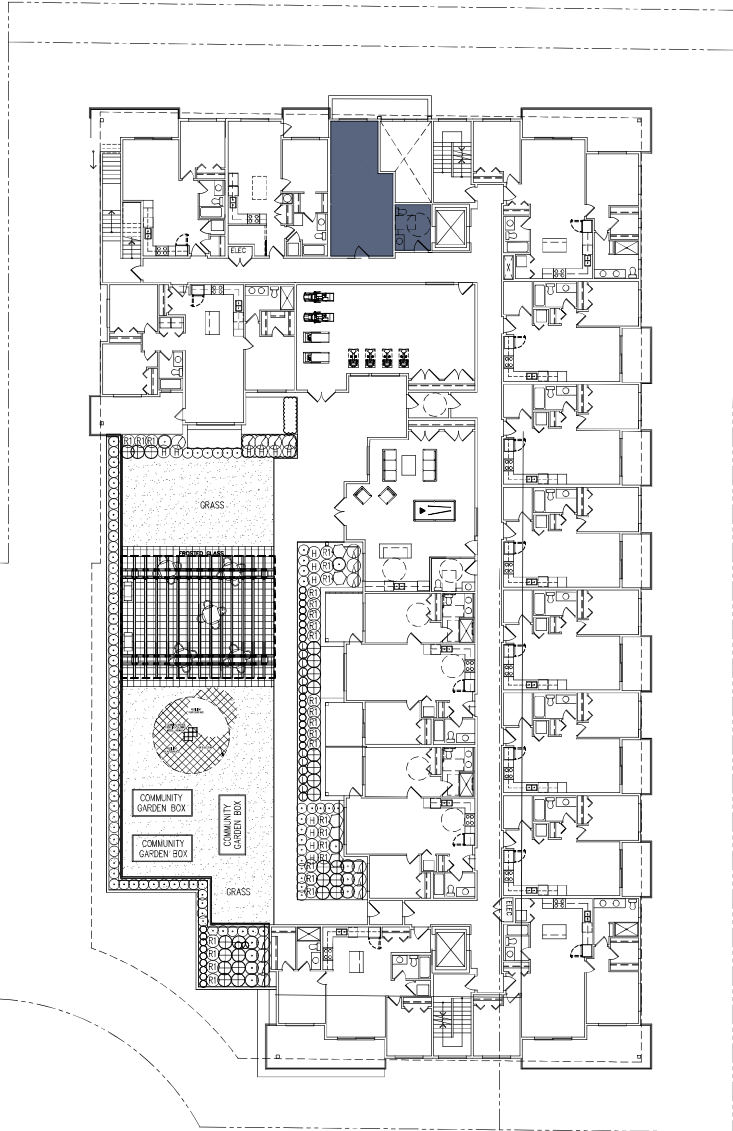
C.KAVOLINAS & ASSOCIATES INC  
BCSLA CSLA  
2462 LONDON COURT  
ARNDSTOWN, R.C.  
VIZ 268  
PHONE (804) 850-2363

CLIENT  
TM CREST HOMES  
ATTENTION: CURVEIR SAMRA (DIRECTOR)  
16484 HIGH PARK AVENUE  
SUMNER, R.C.  
VIZ 0M1  
604-

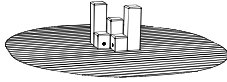
TITLE  
PLAN VIEW  
LANDSCAPE PLAN  
6 STORY  
APARTMENT BUILDING  
201 STREET @ 52/53 AVENUES  
CITY OF LANGLEY, B.C.

SCALE	1:150	DATE	JUNE /23
DRAWN	DMW	CHECKED	
ENL	DMW	AS BUILT	
APPROVED	AS BUILT		

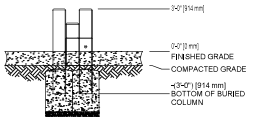
PRINTED	JOB NO.	DRAWING NO.
		L-1



COLUMBIA CASCADE STEPPING COLUMNS MODEL 4500-507



ISOMETRIC VIEW



FRONT VIEW

**playfall** Safety Surfacing System **Technical Data Sheet**

**Playfall™ Fit Details**

- 100mm x 100mm x 10mm (4\"/>

**Playfall™ Installation**

- Prepare for effective drainage
- Apply membrane to substrate and install playfall panels to substrate
- Secure from 100mm (4\"/>

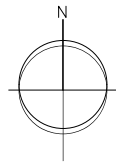
**Playfall™ Height Configurations**

Height	Application
100mm	Standard
150mm	Standard
200mm	Standard
250mm	Standard
300mm	Standard

**Playfall™ Colors**

Black Green Tan/Olive

**10 YEAR WARRANTY**



nov/24	CITY COMMENTS	6
oct/24	revised site plan	5
sep/24	revised site plan	4
may/24	revised site plan	3
dec/23	revised site plan	2
nov/23	revised site plan	1
DATE	REVISION	NO.

C.KAVOLINAS & ASSOCIATES INC.  
 BSLA CSLA  
 2462 JONQUIL COURT  
 ABERDEEN, B.C.  
 V2C 3E8  
 PHONE (604) 850-2363

CLIENT  
 IV CREST HOMES  
 ATTENTION: GURVEER SAMRA (DIRECTOR)  
 16484 HIGH PARK AVENUE  
 SURREY, B.C.  
 V3Z 0M1  
 604-

TITLE  
 PLAN VIEW  
 LANDSCAPE PLAN  
 2nd FLOOR AMENITY  
 APARTMENT BUILDING  
 201 STREET @ 52/53 AVENUES  
 CITY OF LANGLEY, B.C.

SCALE	1:150	DATE	JUNE/23
DRAWN	CHW	CHECKED	
ENGR	CHW	DATE	
APPROVED	AS BUILT		

PRINTED  
 JOB No.  
 DRAWING No.  
 L-1A

KEY	BOTANICAL NAME	PLANT LIST COMMON NAME	QTY.	SIZE	SPACING	REMARKS
	ACER GRISEUM	PAPERBARK MAPLE	4	6 CM. CAL.	AS SHOWN	B. & B.
	CERSIS CANADENSIS 'FOREST PANSY'	REDBUD	3	6 CM. CAL.	AS SHOWN	B. & B.
	CORNUS FLORIDA 'RUBRUM'	RED FLOWERING DOGWOOD	1	6 CM. CAL.	AS SHOWN	B. & B.
	ACER CIRCINATUM	VINE MAPLE	11	3.00 METERS	AS SHOWN	B. & B.
⊖	SARCOCOCCA HOOKERANA HUMILIS	HIMALAYAN SWEET BOX	156	#3 POT	65 CM. O.C.	
⊕	AZALEA JAPONICA 'HINO CRIMSON'	CRIMSON AZALEA	63	#3 POT	85 CM. O.C.	
⊕	AZALEA NORTHERN LIGHTS 'MANDARIN LIGHTS'	NORTHERN LIGHTS AZALEA	56	#3 POT	90 CM. O.C.	
⊖	ABELIA 'EDWARD GOUCHER'	EDWARD GOUCHER ABELIA	10	#3 POT	90 CM. O.C.	
⊖	BUXUS MACROPHYLLA 'WINTER GEM'	ASIAN BOXWOOD	138	#3 POT	45 CM. O.C.	
⊖	HYDRANGEA MACROPHYLLA 'NIKKO BLUE'	HYDRANGEA	35	#3 POT	90 CM. O.C.	
⊕	MEDIUM RHODODENDRON (VARIOUS)	RHODODENDRON	160	#3 POT	90 CM. O.C.	
⊕	POLYSTICHUM MUNIUM	SWARD FERN	48	#3 POT	90 CM. O.C.	
⊕	HOSTA (VARIOUS)	HOSTA	41	#3 POT	90 CM. O.C.	
⊕	SYRINGA VULGARIS 'MICHEL BUCHNER'	LILAC	51	#3 POT	90 CM. O.C.	
⊖	LAVANDUAL ANGUSTIFOLIA 'MUNSTEAD'	LAVENDER	36	#3 POT	45 CM. O.C.	
⊖	HEVEROCALLIS 'AUTUMN RED'	AUTUMN RED LILY	79	#3 POT	45 CM. O.C.	
⊖	GAUTHERIA SHALLON	SALAL	144	#3 POT	45 CM. O.C.	



**NOTES / GENERAL**

1) PLANT SIZES IN THIS LIST ARE SPECIFIED ACCORDING TO BC LANDSCAPE STANDARD "LATEST EDITION". CONTAINER SIZES ARE SPECIFIED AS FOR "MINI STANDARDS". BOTH PLANT SIZE AND CONTAINER SIZE ARE THE MINIMUM ACCEPTABLE SIZES. SEARCH AND REVIEW, MAKE PLANT MATERIAL AVAILABLE FOR OPTIONAL REVIEW BY "LANDSCAPE ARCHITECT" AT SOURCE OF SUPPLY. AREA OF SEARCH TO INCLUDE LOWER MAINLAND AND FRASER VALLEY. "SUBSTITUTIONS" MUST OBTAIN WRITTEN APPROVAL FROM THE "LANDSCAPE ARCHITECT" PRIOR TO MAKING ANY SUBSTITUTIONS TO SPECIFIED MATERIAL. UNAPPROVED SUBSTITUTIONS WILL BE REJECTED. ALLOW A MINIMUM OF FIVE WORKING DAYS PRIOR TO DELIVERY FOR REQUEST TO SUBSTITUTE. SUBSTITUTIONS ARE SUBJECT TO "B.C. LANDSCAPE STANDARD".

ALL PLANT MATERIAL MUST BE PROVIDED FROM CERTIFIED "DISEASE FREE" NURSERY. ALL PLANT MATERIAL MUST CONFORM TO THE LATEST EDITION OF THE "BC LANDSCAPE STANDARD". PROVIDE CERTIFICATION UPON REQUEST. ALL LANDSCAPING AND LANDSCAPE MATERIALS TO CONFORM TO THE LATEST EDITION OF THE BC LANDSCAPE "LANDSCAPE STANDARD".

2) MIN. GROWING MEDIUM DEPTHS OVER PREPARED SUBGRADE SHALL BE :

LAWN AREAS	300 mm
GROUND COVER AREAS	450 mm
SHRUB AREAS	450 mm
TREE PITS	300 mm AROUND ROOT BALL

3) GROWING MEDIUM SHALL HAVE PHYSICAL AND CHEMICAL PROPERTIES AS DESCRIBED IN THE STANDARDS FOR LEVEL 2 AND LEVEL 3 AREAS, EXCEPT FOR AREAS OVER STRUCTURES WHERE THE MEDIUM SHALL CONFORM TO THE REQUIREMENTS FOR LEVEL 1. APPLICATIONS, PROCESSING AND MIXING OF GROWING MEDIUM COMPONENTS SHALL BE DONE OFF-SITE USING A MECHANIZED SCREENING PROCESS. PROPOSED GROWING MEDIUM SHALL BE TESTED BY A RECOGNIZED LABORATORY. THE CONTRACTOR SHALL GUARANTEE THAT THE SOIL SUBMITTED FOR TESTING IS A REPRESENTATIVE SAMPLE TAKEN FROM THE SOIL THAT WILL BE USED AT THE SITE.

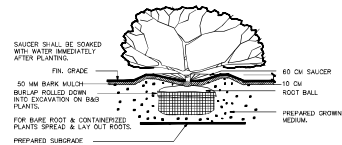
4) ON-SITE OR IMPORTED SOILS SHALL SATISFY THE REQUIREMENTS OF THE STANDARDS FOR GROWING MEDIUM. SOILS SHALL BE VIRTUALLY FREE FROM SUBSOL, WOOD INCL, WOODY PLANT PARTS, WEED OR REPRODUCTIVE PARTS, OF WEEDS, PLANT PATHOGENS, ORGANIC, TOXIC MATERIALS, STONES OVER 30 MM AND FOREIGN OBJECTS.

5) ALL PLANTING BEDS SHALL RECEIVE MIN. 50 MM BARK MULCH.

6) PLANT SPECIES AND VARIETIES MAY NOT BE SUBSTITUTED WITHOUT THE APPROVAL OF THE LANDSCAPE ARCHITECT.

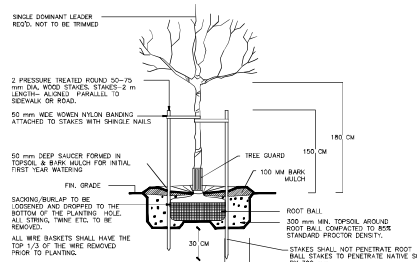
7) THE CONTRACTOR SHALL GUARANTEE ALL MATERIALS AND WORKMANSHIP FOR A PERIOD OF ONE (1) FULL YEAR FROM THE DATE OF FINAL ACCEPTANCE, UNLESS OTHERWISE SPECIFIED. ALL PLANT MATERIAL NOT SURVIVING, OR IN POOR CONDITION DURING THE GUARANTEE PERIOD SHALL BE REPLACED BY THE CONTRACTOR AT NO EXTRA COST TO THE OWNER.

8) THE CONTRACTOR SHALL CLEAR AWAY FROM THE SITE ALL RUBBISH AS IT ACCUMULATES, AND SHALL, AT THE COMPLETION OF THE WORK, LEAVE THE WORK AND THE SITE THEREIN IN A CLEAN AND PRESENTABLE CONDITION, FREE FROM ALL OBSTRUCTIONS.



PLANTING DETAIL - SHRUBS & GRD. COVER PLANTS

SECTION N.T.S.



TREE PLANTING DETAIL

SECTION N.T.S.



nov/24	CITY COMMENTS	6
oct/24	revised site plan	5
sep/24	revised site plan	4
may/24	revised site plan	3
dec/23	revised site plan	2
nov/23	revised site plan	1
DATE	REVISIONS	NO.

C.KAVOLINAS & ASSOCIATES INC  
BISLA CSLA  
2462 JONQUIL COURT  
ABBOTSFORD, B.C.  
V3G 3E8  
PHONE (604) 850-2363

CLIENT  
TM CREST HOMES  
ATTENTION: CURVEER SAMRA (DIRECTOR)  
16484 HIGH PARK AVENUE  
SURREY, B.C.  
V3Z 0M1  
604-

TITLE  
PLAN VIEW  
LANDSCAPE DETAILS  
6 STORY  
APARTMENT BUILDING  
201 STREET @ 52/53 AVENUES  
CITY OF LANGLEY, B.C.

SCALE	N.T.S.	DATE	JUNE/23
DRWT	DKW		
ENGR	DKW		
APPRD	AS BUILT		

PRINTED	JOB NO.	
	DRAWING NO.	L-1B