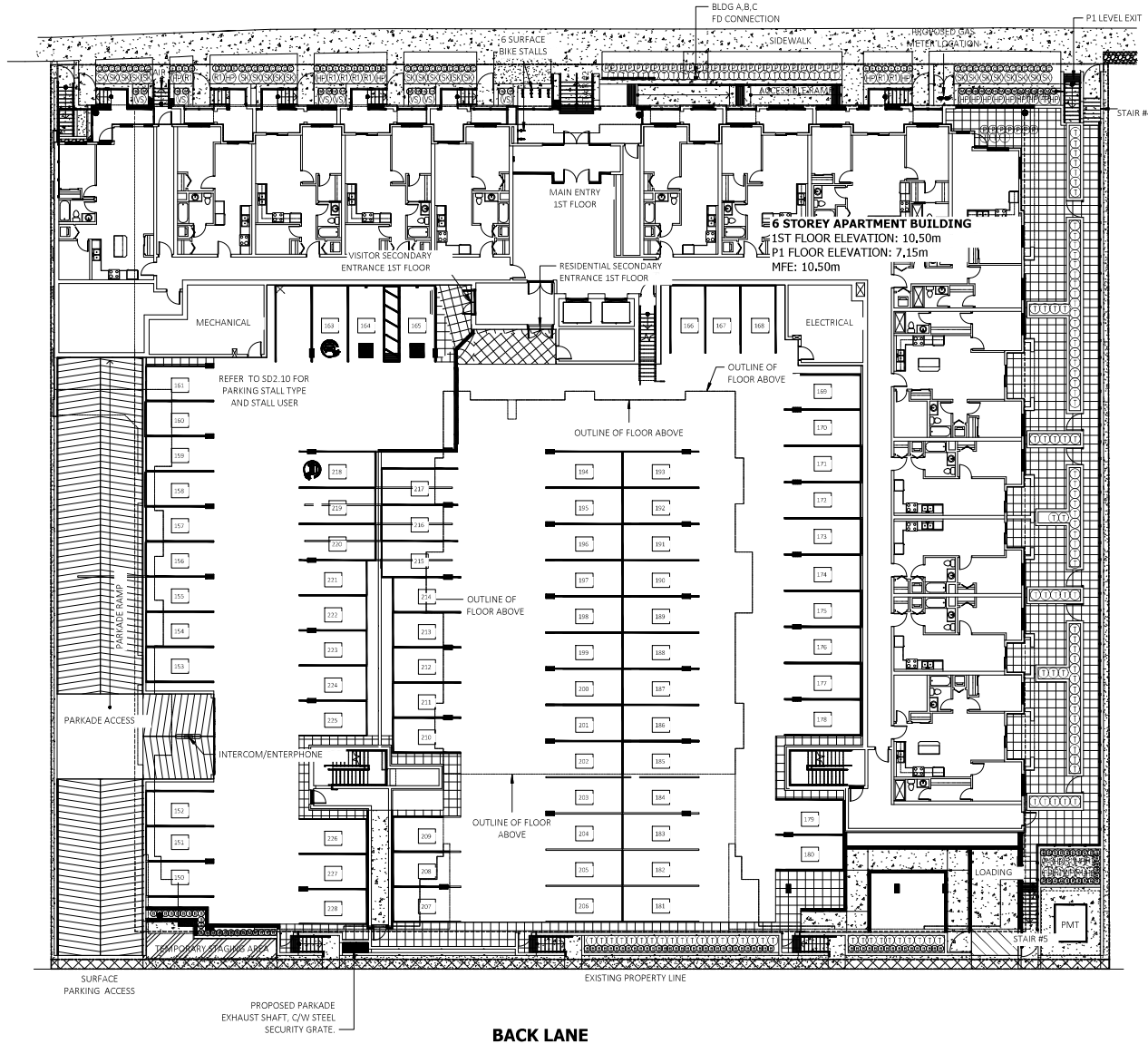


EASTLEIGH CRESCENT



DEC/22	REVISED SITE PLAN	4
AUG/22	CITY REQUEST	3
JUL/22	REVISED SITE PLAN	2
MAR/22	REVISED SITE PLAN	1
DATE	REVISED	NO.
	REVISIONS	

C.KAVOLINAS & ASSOCIATES INC.
 BCSLA CSLA
 2462 JONQUIL COURT
 ABBOTSFORD, B.C.
 V3G 3E8
 PHONE (604) 857-2376

CLIENT
 WHITETAIL HOMES
 GROUP OF COMPANIES
 SUITE #104
 3550 MC LEAN ROAD
 ABBOTSFORD, B.C.
 V4X 6A1

TITLE
 PLAN VIEW
 LANDSCAPE PLAN
 COSSELIN EASTLEIGH
 APARTMENT BUILDING
 20844 EASTLEIGH CRESCENT
 LANGLEY, B.C.

SCALE	1:150	DATE	MAR/22
DWNT	CHKD		
ENL	CHKD		
APPVD	AS BUILT		

PRINTED	JOB NO.	
	DRAWING NO.	L-1



DATE	REVISIONS	NO.
DEC/22	REVISED SITE PLAN	4
AUG/22	CITY REQUEST	3
JUL/22	REVISED SITE PLAN	2
MAR/22	REVISED SITE PLAN	1

C. KAVOLINAS & ASSOCIATES INC.

BSLA CSLA

3482 JONHULL COURT
ABBOTSFORD, B.C.
V3G 3E8

PHONE (604) 857-2376

CLIENT

WHITETAL HOMES
GROUP OF COMPANIES
SUITE #104
3550 MT. LEHMAN ROAD
ABBOTSFORD, B.C.
V4X 0A1

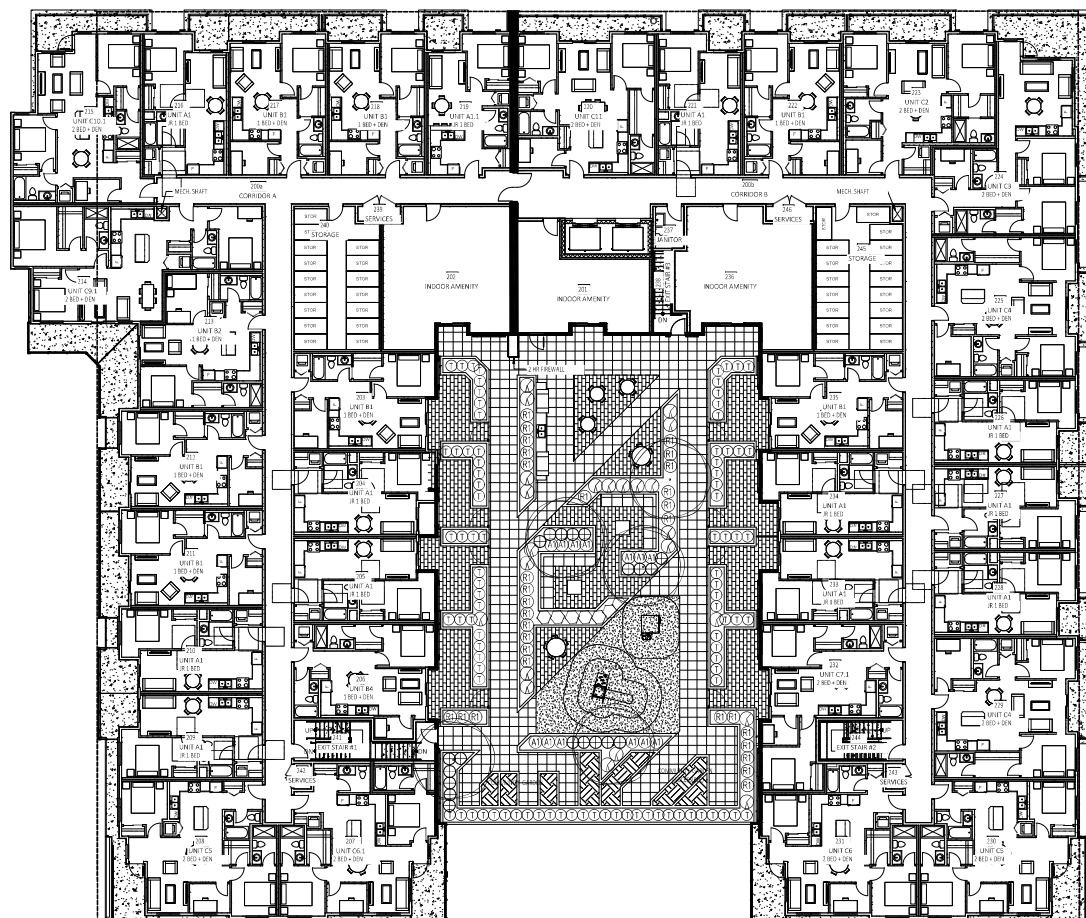
TITLE

PLAN VIEW

LANDSCAPE PLAN
GOSSELIN EASTLEIGH
APARTMENT BUILDING
20644 CASTLEIGH CRESCENT
LANGLEY, B.C.

SCALE	1:150	DATE	MAR/22
DRAWN	DWD	CHECKED	
ENGR	DWD	DATE	
APPROVED	CK R.L.T.		

PRINTED	JOB No.	△
	DRAWING No.	
L-1A		



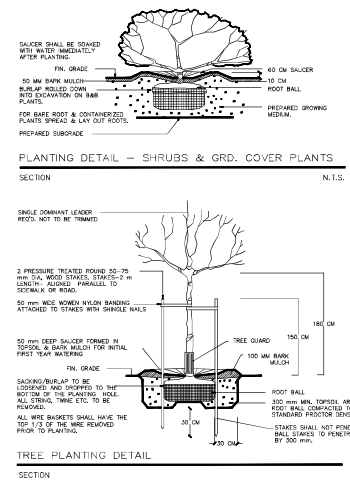
NEW PROPERTY LINE

KEY	BOTANICAL NAME	PLANT LIST COMMON NAME	QTY.	SIZE	SPACING	
○	ACER PALMATUM 'BLOODGOOD'	BLOODGOOD JAP. MAPLE	5	3.00 METERS	AS SHOWN	B. & B.
⊙	BUXUS MACROPHYLLA 'WINTER GEM'	ASIAN BOXWOOD	95	#3 POT	45 CM. O.C.	
⊙	HAKONECLOA MACRA 'AUREOLA'	GOLD VERIEGATED JAPANESE FOREST GRASS	35	#2 POT	45 CM. O.C.	
⊙	EUONYMUS JAPONICA 'EMERALD GAJETY'	EUONYMUS SILVER VARIEGATED	32	#2 POT	45 CM. O.C.	
⊙	CAREX OSHIMENSIS 'EVERGOLD'	JAPANESE SEDGE	46	#2 POT	45 CM. O.C.	
⊙	PENNISETUM ALANECROIDES 'LITTLE BUNNY'	LITTLE BUNNY FOUNTAIN GRASS	35	#3 POT	60 CM. O.C.	
①	TAXIS x MEDIA HICKSII	HICK'S YEW	202	1.50 METERS	70 CM. O.C.	
⊕	HYDRANGEA PANICULATA 'LIMELIGHT'	LIMELIGHT HYDRANGEA LIMEGREEN-PINK	19	#3 POT	90 CM. O.C.	
⊕	VIBURNUM P.T. 'SUMMER SNOWFLAKE'	SUMMER SNOWFLAKE VIBURNUM	10	#3 POT	90 CM. O.C.	
⊕	SKIMMIA JAPONICA MACROPHYLLA MALE	SKIMMIA	24	#3 POT	90 CM. O.C.	
⊕	MEDIUM RHODODENDRON (VARIOUS)	RHODODENDRON	38	#3 POT	90 CM. O.C.	
⊕	AZALEA JAPONICA 'HINO CRIMSON'	CRIMSON AZALEA	21	#3 POT	90 CM. O.C.	
⊕	AZALEA NORTHERN LIGHTS 'MANDARIN LIGHTS'	NORTHERN LIGHTS AZALEA	13	#3 POT	90 CM. O.C.	
○	ABELIA 'EDWARD GOUCHER'	EDWARD GOUCHER ABELIA	7	#3 POT	90 CM. O.C.	
⊙	SYRINGA VULGARIS 'MICHEL BUCHNER'	LILAC	19	#3 POT	90 CM. O.C.	

NOTES / GENERAL

- PLANT SIZES IN THIS LIST ARE SPECIFIED ACCORDING TO THE LANDSCAPE STANDARD 'LATEST EDITION'. CONTAINER SIZES ARE SPECIFIED AS PER 'ONTARIO STANDARDS' BOTH PLANT SIZE AND CONTAINER SIZE ARE THE MINIMUM ACCEPTABLE SIZES. SEARCH AND REVIEW MAKE PLANT MATERIAL AVAILABLE FOR OPTIONAL REVIEW BY 'LANDSCAPE ARCHITECT' AT SOURCE OF SUPPLY. AREA OF SEARCH TO INCLUDE LOWER MAIN AND FRASER VALLEY. 'SUBSTITUTIONS' MUST OBTAIN WRITTEN APPROVAL FROM THE 'LANDSCAPE ARCHITECT' PRIOR TO MAKING ANY SUBSTITUTIONS TO SPECIFIED MATERIAL. UNAPPROVED SUBSTITUTIONS WILL BE REJECTED. ALLOW A MINIMUM OF FIVE WORKING DAYS PRIOR TO DELIVERY FOR REQUEST TO SUBSTITUTE. SUBSTITUTIONS ARE SUBJECT TO 'O.C. LANDSCAPE STANDARD'
- ALL PLANT MATERIAL MUST BE PROVIDED FROM IDENTIFIED 'DISEASE FREE' NURSERY. ALL PLANT MATERIAL MUST CONFORM TO THE LATEST EDITION OF THE 'O.C. LANDSCAPE STANDARD' PROVIDE CERTIFICATION UPON REQUEST. ALL LANDSCAPING AND LANDSCAPE MATERIALS TO CONFORM TO THE LATEST EDITION OF THE BOLA/BOSLA 'LANDSCAPE STANDARDS'
- MIN. GROWING MEDIUM DEPTHS OVER PREPARED SUBGRADE SHALL BE:

LAWN AREAS	300 mm
GROUND COVER AREAS	450 mm
SHRUB AREAS	450 mm
TREE PITS	300 mm AROUND ROOT BALL
- GROWING MEDIUM SHALL HAVE PHYSICAL AND CHEMICAL PROPERTIES AS DESCRIBED IN THE STANDARDS FOR LEVEL 3 AND LEVEL 3 AREAS, EXCEPT FOR AREAS OVER STRUCTURES WHERE THE MEDIUM SHALL CONFORM TO THE REQUIREMENTS FOR LEVEL 1 APPLICATIONS. PROCESSING AND MIXING OF GROWING MEDIUM COMPONENTS SHALL BE DONE OFF-SITE USING A MECHANIZED SYSTEMIC PROCESS. PROPOSED GROWING MEDIUM SHALL BE TESTED BY A RECOGNIZED LABORATORY. THE CONTRACTOR SHALL GUARANTEE THAT THE SOIL, SUBMITTED FOR TESTING IS A REPRESENTATIVE SAMPLE TWOX FROM THE SOIL THAT WILL BE USED AT THE SITE.
- ON-SITE OR IMPORTED SOILS SHALL SATISFY THE REQUIREMENTS OF THE STANDARDS FOR GROWING MEDIUM. SOILS SHALL BE VIRTUALLY FREE FROM SUBSOIL, WOOD INCL., WOODY PLANT PARTS, NEDS OR REPRODUCTIVE PARTS OF WEEDS, PLANT PATHOGENIC ORGANISMS, TOXIC MATERIALS, STONES OVER 50 MM AND FOREIGN OBJECTS.
- ALL PLANTING BEDS SHALL RECEIVE MIN. 50 MM BARK MULCH.
- PLANT SPECIES AND VARIETIES MAY NOT BE SUBSTITUTED WITHOUT THE APPROVAL OF THE LANDSCAPE ARCHITECT.
- THE CONTRACTOR SHALL QUARANTEE ALL MATERIALS AND WORKMANSHIP FOR A PERIOD OF ONE (1) FULL YEAR FROM THE DATE OF FINAL ACCEPTANCE, UNLESS OTHERWISE SPECIFIED. ALL PLANT MATERIAL NOT SURVIVING, OR IN POOR CONDITION DURING THE GUARANTEE PERIOD SHALL BE REPLANTED BY THE CONTRACTOR AT NO COST TO THE OWNER.
- THE CONTRACTOR SHALL CLEAR AWAY FROM THE SITE ALL RUBBISH AS IT ACCUMULATES, AND SHALL, AT THE COMPLETION OF THE WORK, LEAVE THE WORK AND THE SITE THEREOF IN A CLEAN AND PRESENTABLE CONDITION, FREE FROM ALL OBSTRUCTIONS.



DEC/22	REVISED SITE PLAN	4
AUG/24	CITY REQUEST	3
JUL/22	REVISED SITE PLAN	2
MAR/22	REVISED SITE PLAN	1
DATE	REVISION	NO.

C.KAVOLINIS & ASSOCIATES INC.
 BOSLA CSLA
 2462 JONGUIL COURT
 ABBOTSFORD, B.C.
 V3C 3E8
 PHONE (604) 857-2376

CLIENT
 WHITETAIL HOMES
 GROUP OF COMPANIES
 SUITE #104
 3550 M.L. LEAMAN ROAD
 ABBOTSFORD, B.C.
 V3C 5A1

TITLE
 PLAN VIEW
 LANDSCAPE DETAILS
 GOSSELIN EASTLEIGH
 APARTMENT BUILDING
 20644 EASTLEIGH CRESCENT
 LANSLEY, B.C.

SCALE	N.T.S.	DATE	MAR/22
DRAWN	CHW/TS		
CHKD	CHW/TS		
APPRD	AS B.A.L.T.		

PRINTED
 JOB NO.
 DRAWING NO.
 L-1B