

WESMONT APARTMENTS EASTLEIGH, 20625 EASTLEIGH CRESCENT, LANGLEY, BC



KEYSTONE
ARCHITECTURE
ABBOTSFORD BC | 300 - 33131 SOUTH FRASER WAY
V2S 2B1 | 604.850.0577
CALGARY AB | 1601 - 333 11TH AVENUE SW
T2R 1L9 | 587.391.4768
INFO@KEYSTONearch.ca



LANDSCAPE ARCHITECTURE DIVISION

**ISSUED FOR
DEVELOPMENT
PERMIT**

NO.	ISSUE/REVISION	DATE
1	ISSUED FOR DP	07-28-23
2	RE-ISSUED FOR DP	09-26-23
3	RE-ISSUED FOR DP	10-05-23
4	RE-ISSUED FOR DP	11-06-23
5	RE-ISSUED FOR DP	28-01-30

**WESMONT
APARTMENTS
EASTLEIGH**

20625 EASTLEIGH CRESCENT,
LANGLEY, BC

PROJECT # 23112
CITY FILE #



COVER SHEET

sheet schedule

Sheet Number	Sheet Title
L-0.00	COVER SHEET
L-1.01	SITE PLAN
L-1.02	PODIUM PLAN
L-1.03	GRADING PLANS
L-2.00	PLANTING PRECEDENTS
L-2.01	SITE PLANTING PLAN
L-2.02	PODIUM PLANTING PLAN

DESIGN RATIONALE

THE LANDSCAPE OF WESMONT APARTMENTS ON EASTLEIGH IS DESIGNED TO REFLECT AN INDUSTRIAL, MODERN, AND SLEEK CHARACTER WITH BURSTS OF COLOUR ADDED THROUGH PLANT MATERIAL. THE SITE PLAN SHOWCASES APARTMENTS THAT HAVE A CONNECTION TO EASTLEIGH CRESCENT WITH AN EDGE DEFINED BY SMOOTH FINISH CONCRETE WALLS WITH LARGE REVEALS THAT COMPLEMENT A DECORATIVE CABLE FENCING THAT VISUALLY SEPARATES PUBLIC AND PRIVATE SPACES. UNIT ADDRESSES AND ASSOCIATED LIGHTING WILL ALSO STRENGTHEN THE ROAD FRONTAGE CONNECTION. FINALLY A CANOPY OF FRUIT TREES WITH AN UNDERSTOREY OF EDIBLES CONNECTS THE SURFACE PARKING LOT TO THE STREET.

THE OUTDOOR AMENITY SPACE CAN BE EXPLORED ON THE SECOND LEVEL WHERE STRONG CONNECTIONS HAVE BEEN MADE BETWEEN THE INDOOR AND OUTDOOR AMENITY SPACES WITH DOORS EXITING OUT TO AN OUTDOOR BBQ AREA FROM THE INTERIOR KITCHEN SPACE, AND AN OUTDOOR WORKOUT SPACE CONNECTED TO THE INDOOR GYM. ADDITIONAL AMENITIES INCLUDE A CHILDREN'S PLAY AREA, A DOG RUN, AND A FIRE PIT GATHERING SPACE. DUE TO PRIMARILY A NORTHERN EXPOSURE, A STRONG EMPHASIS WILL BE PUT ON ENHANCING THE SPACE WITH LUSH, SHADE-LOVING PLANTS THAT WILL MAKE THE SPACES FEEL INVITING AND INTENTIONAL.

WESMONT

T 604.371.0250 | 111 - 23189 FRANCIS AVENUE
LANGLEY, BC V1M 0G4



KEYSTONE ARCHITECTURE & PLANNING LTD.

T 604.850.0577 | 300 - 33131 SOUTH FRASER WAY
F 1.855.398.4578 | ABBOTSFORD, BC V2S 2B1
T 587.391.4768 | 1601 - 333 11TH AVENUE SW,
CALGARY, AB T2R 1L9
E-MAIL: INFO@KEYSTONearch.ca
WEBSITE: KEYSTONearch.ca

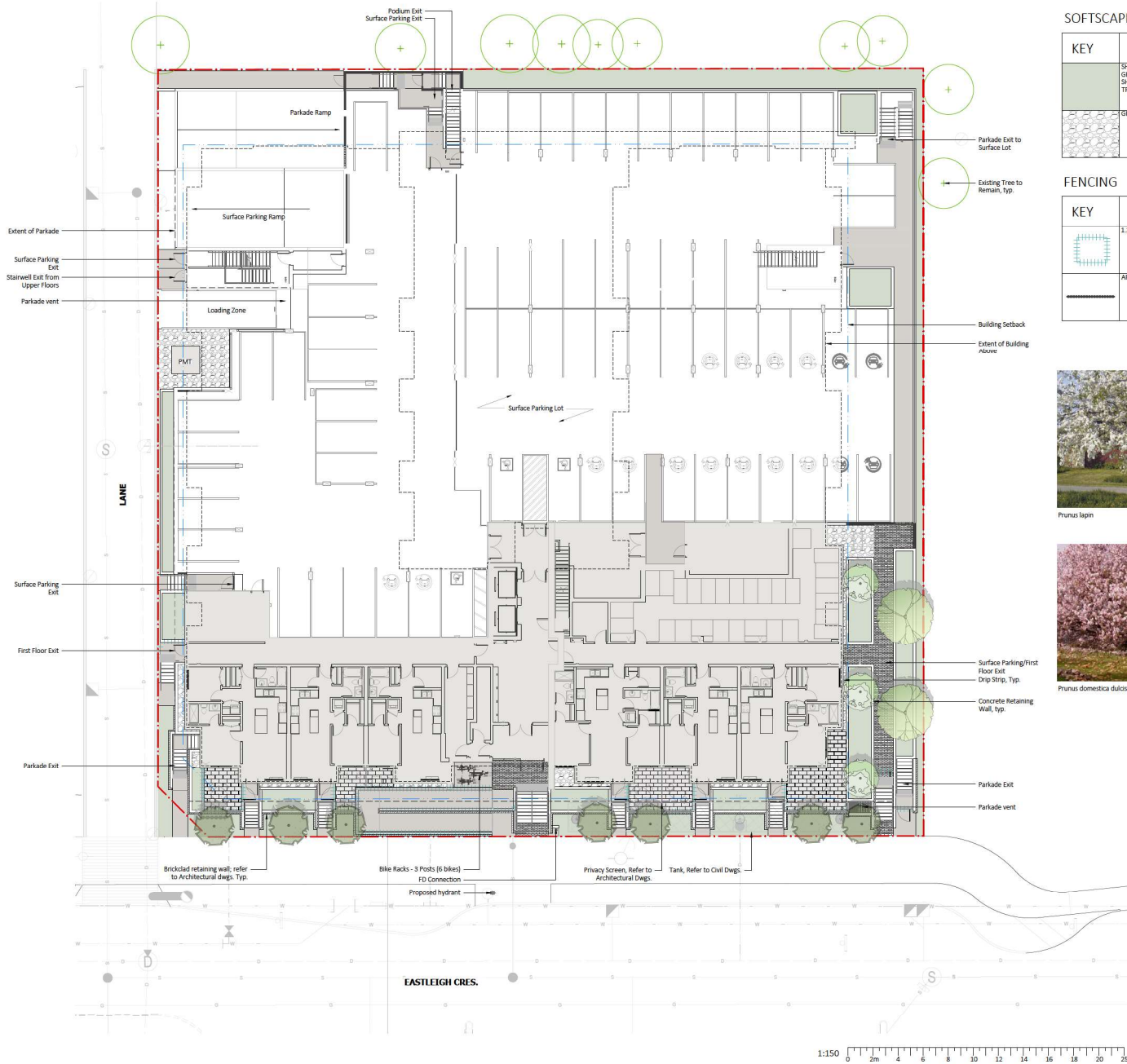


LANDSCAPE ARCHITECTURE DIVISION

T 604.850.0577 EXT. 216 | 300 - 33131 SOUTH FRASER WAY
ABBOTSFORD, BC V2S 2B1
E-MAIL: JENNIFER@KEYSTONearch.ca

SCALE

L-0.00



SOFTSCAPE MATERIALS

KEY	DESCRIPTION
	SHRUB PLANTING GROWING MEDIUM: SHRUBS - 450mm MIN. DEPTH TREES - 900mm MIN. DEPTH
	GRANULAR DRIP STRIP

FENCING

KEY	DESCRIPTION
	1.2m HIGH DECORATIVE CABLE FENCE
	ARCHITECTURAL GUARDRAIL



HARDSCAPE MATERIALS

KEY	DESCRIPTION
	PLANK PAVEMENT Size: 75 x 450 x 100mm Colour: NATURAL (90%) + CHARCOAL (10%) Manufacturer: BASALITE
	HAMPPTON CONCRETE SLABS Size: 606 x 301 x 50.8mm Colour: WHITE Manufacturer: NEWSTONE GROUP
	CAST-IN-PLACE CONCRETE SIDEWALK C/W SAWCUT JOINTS
	CONCRETE RETAINING WALL
	CONCRETE RETAINING WALL w/ BRICK; REFER TO ARCHITECTURAL DWGS. TYP.

SITE FURNISHINGS

KEY	DESCRIPTION
	LOOP 2 SPACE BIKE RACK Colour: TBC Manufacturer: WISHBONE SITE FURNISHINGS Supplier: WISHBONE SITE FURNISHINGS Mount: SURFACE



TREE LEGEND

	Prunus lapin		Existing Tree
	Prunus domestica dulcis 'Hall's Hardy'		Tilia cordata 'Summer Sprite'

TREE SCHEDULE

QUAN	BOTANICAL NAME	COMMON NAME	SIZE
2	Prunus domestica dulcis 'Hall's Hardy'	Hall's Hardy Almond	B18; 60m call
3	Prunus lapin	Lapin Sweet Cherry	B18; 60m call
7	Tilia cordata 'Summer Sprite'	Summer Sprite Linden	B18; 60m call



NO.	ISSUE/REVISION	DATE
1	ISSUED FOR DP	07-28-23
2	RE-ISSUED FOR DP	09-26-23
3	RE-ISSUED FOR DP	10-05-23
4	RE-ISSUED FOR DP	11-06-23
5	RE-ISSUED FOR DP	28-01-30

WESMONT APARTMENTS EASTLEIGH

20625 EASTLEIGH CRESCENT,
LANGLEY, BC

PROJECT # 23112
CITY FILE #



SITE PLAN

SCALE 1:150

L-1.01

HARDSCAPE MATERIALS

KEY	DESCRIPTION
	PAVING PAVES Size: 75 x 450 x 100mm Colour: NATURAL (90%) + CHARCOAL (10%) Manufacturer: BASALITE
	HAMPSON CONCRETE SLABS Size: 605 x 301 x 50.8mm Colour: WHITE Manufacturer: NEWSTONE GROUP
	RUBBER PAVES Colour: 100% RECYCLED BLACK Manufacturer: DNIFLEX Supplier: HABITAT SYSTEMS
	CONCRETE RETAINING WALL

SOFTSCAPE MATERIALS

KEY	DESCRIPTION
	SHRUB PLANTING SHOWING MEDIUM: SHRUBS - 450mm MIN. DEPTH TREES - 900mm MIN. DEPTH
	GRANULAR DRIP STRIP
	SOD
	RESIN-BOUND PEA GRAVEL Product: Rompac - Profi-Deko Manufacturer: Romex

SITE FURNISHINGS

KEY	DESCRIPTION
	MAGLIN LEXICON 8 TABLE Colour: TBD Manufacturer: MAGLIN SITE FURNISHINGS Supplier: MAGLIN SITE FURNISHINGS Mount: SURFACE
	MAGLIN 725 CHAIR Colour: TBD Manufacturer: MAGLIN SITE FURNISHINGS Supplier: MAGLIN SITE FURNISHINGS Mount: SURFACE
	MAGLIN 1100 GAME TABLE Colour: TBD Manufacturer: MAGLIN SITE FURNISHINGS Supplier: MAGLIN SITE FURNISHINGS Mount: SURFACE

FENCING

KEY	DESCRIPTION
	1.5m HIGH FENCE PRIVACY FENCE
	1.2m HIGH DECORATIVE CABLE FENCE
	ARCHITECTURAL GUARDRAIL
	1.2m WOOD FENCE WITH WELDED WIRE MESH



WOOD FENCE WITH WELDED WIRE MESH PRECEDENT



KOMPAN DOUBLE TOWER WITH BRIDGE
ROMPAC PROFI-DEKO WHITE HAMPTON SLAB



NATURAL PLANK PAVES
CHARCOAL PLANK PAVES



LINE

EASTLEIGH CRESCENT

1:150 0 2 4 6 8 10 12 14 16 18 20 25



MAGLIN 1.2m PICNIC TABLE



MAGLIN LOUNGE SEATING



LINEAR FIRE TABLE PRECEDENT



KOMPAN MULTI-GOAL



FIRE PIT SPATIAL PRECEDENT



LANDSCAPE ARCHITECTURE DIVISION

**ISSUED FOR
DEVELOPMENT
PERMIT**

NO.	ISSUE/REVISION	DATE
1	ISSUED FOR DP	07-28-23
2	RE-ISSUED FOR DP	09-26-23
3	RE-ISSUED FOR DP	10-05-23
4	RE-ISSUED FOR DP	11-06-23
5	RE-ISSUED FOR DP	28-01-30

**WESMONT
APARTMENTS
EASTLEIGH**

20625 EASTLEIGH CRESCENT,
LANGLEY, BC

PROJECT # 23112
CITY FILE #

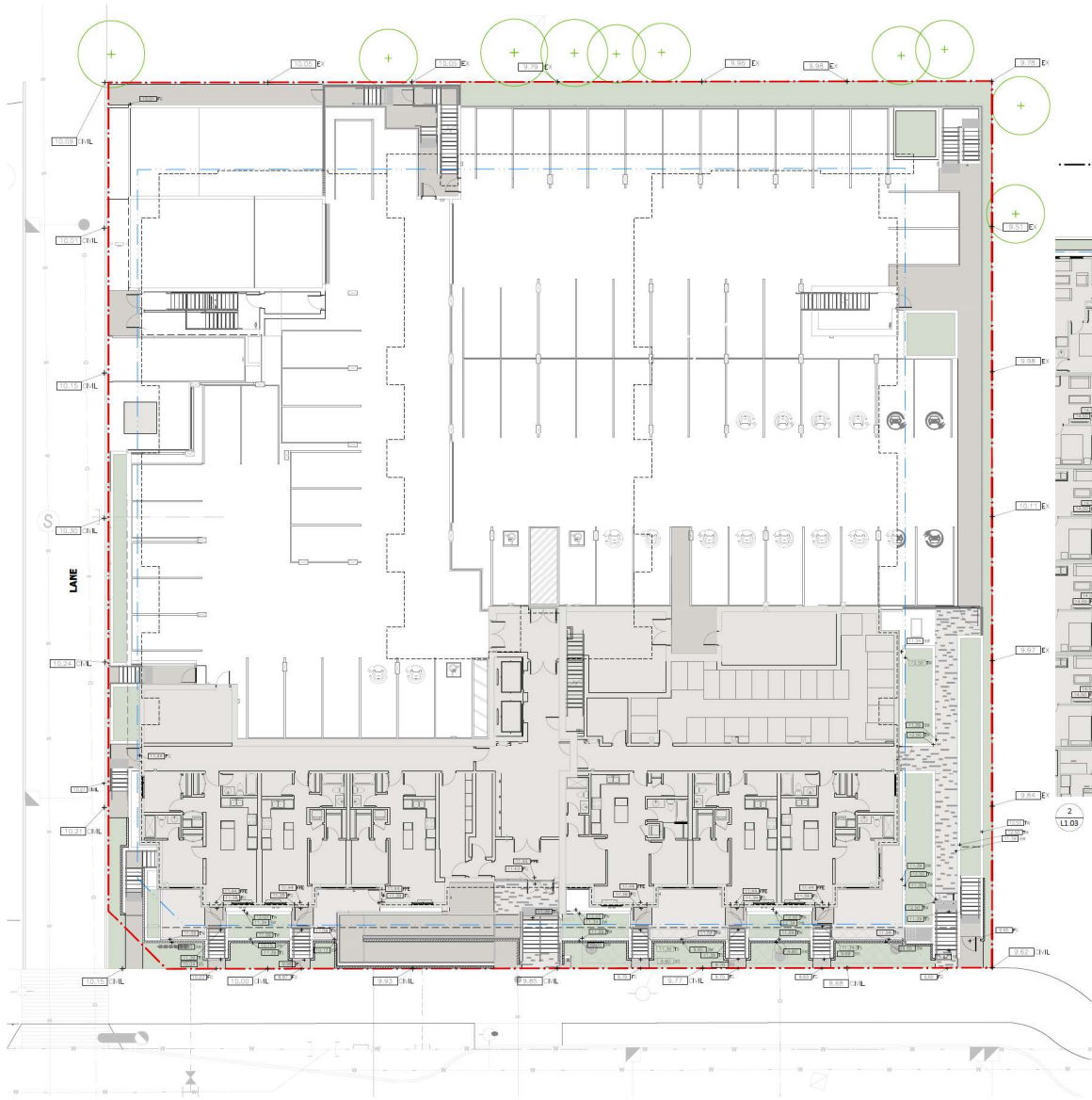


PODIUM PLAN

SCALE 1:150

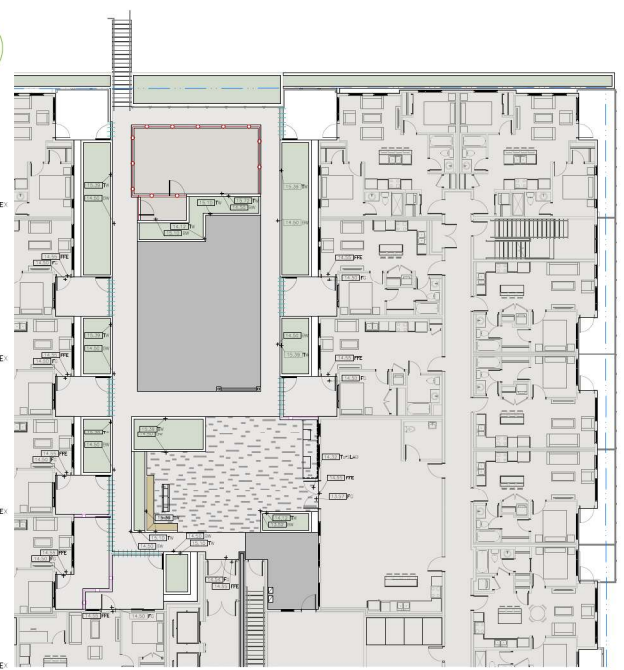


L-1.02



1
L1.03
SITE GRADING PLAN
Scale 1:150

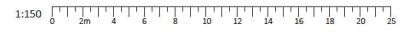
EASTLEIGH CRES.



2
L1.03
PODIUM GRADING PLAN
Scale 1:150

GRADING LEGEND

KEY	DESCRIPTION
± 0.000 FFE	FINISHED FLOOR ELEVATION
± 0.000 FG	FINISHED GRADE
± 0.000 TW	TOP OF WALL
± 0.000 BW	BOTTOM OF WALL
± 0.000 TS	TOP OF STAIR
± 0.000 BS	BOTTOM OF STAIR
± 0.000 T&A	TOP OF SLAB
± 0.000 P-CIVIL	PROPOSED GRADE BY CIVIL
± 0.000 EX	EXISTING GRADE



LANDSCAPE ARCHITECTURE DIVISION
ISSUED FOR DEVELOPMENT PERMIT

NO.	ISSUE/REVISION	DATE
1	ISSUED FOR DP	07-28-23
2	RE-ISSUED FOR DP	09-26-23
3	RE-ISSUED FOR DP	10-05-23
4	RE-ISSUED FOR DP	11-06-23
5	RE-ISSUED FOR DP	28-01-30

WESMONT APARTMENTS EASTLEIGH

20625 EASTLEIGH CRESCENT,
LANGLEY, BC

PROJECT # 23112
CITY FILE #



GRADING PLANS

SCALE 1:150



L-1.03



LANDSCAPE ARCHITECTURE DIVISION

**ISSUED FOR
DEVELOPMENT
PERMIT**

NO.	ISSUE/REVISION	DATE
1	ISSUED FOR DP	07-28-23
2	RE-ISSUED FOR DP	09-26-23
3	RE-ISSUED FOR DP	10-05-23
4	RE-ISSUED FOR DP	11-06-23
5	RE-ISSUED FOR DP	28-01-30

**WESMONT
APARTMENTS
EASTLEIGH**

20625 EASTLEIGH CRESCENT,
LANGLEY, BC

PROJECT # 23112
CITY FILE #



**PLANTING
PRECEDENTS**

SCALE N.T.S.



HYDRANGEA



LIRIOPE



RHODODENDRON



CARYOPTERIS



LAVANDULA



VACCINIUM



AZALEA



ERICA



HYDRANGEA



HEMEROCALLIS



LEUCOTHOE



ROSA



AZALEA



WEIGELA



FRAGARIUS



KALMIA



SANGUISORBA



VACCINIUM



PANICUM



NANDINA



ORIGANUM



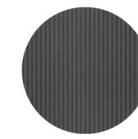
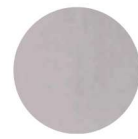
CAREX



CORNUS



ENKIANTHUS



ARCHITECTURAL PALETTE



TELLIMA



ASPLENIUM



ILEX



LANDSCAPE ARCHITECTURE DIVISION

**ISSUED FOR
DEVELOPMENT
PERMIT**

NO.	ISSUE/REVISION	DATE
1	ISSUED FOR DP	07-28-23
2	RE-ISSUED FOR DP	09-26-23
3	RE-ISSUED FOR DP	10-05-23
4	RE-ISSUED FOR DP	11-06-23
5	RE-ISSUED FOR DP	28-01-30

**WESMONT
APARTMENTS
EASTLEIGH**

20625 EASTLEIGH CRESCENT,
LANGLEY, BC

PROJECT # 23112
CITY FILE #

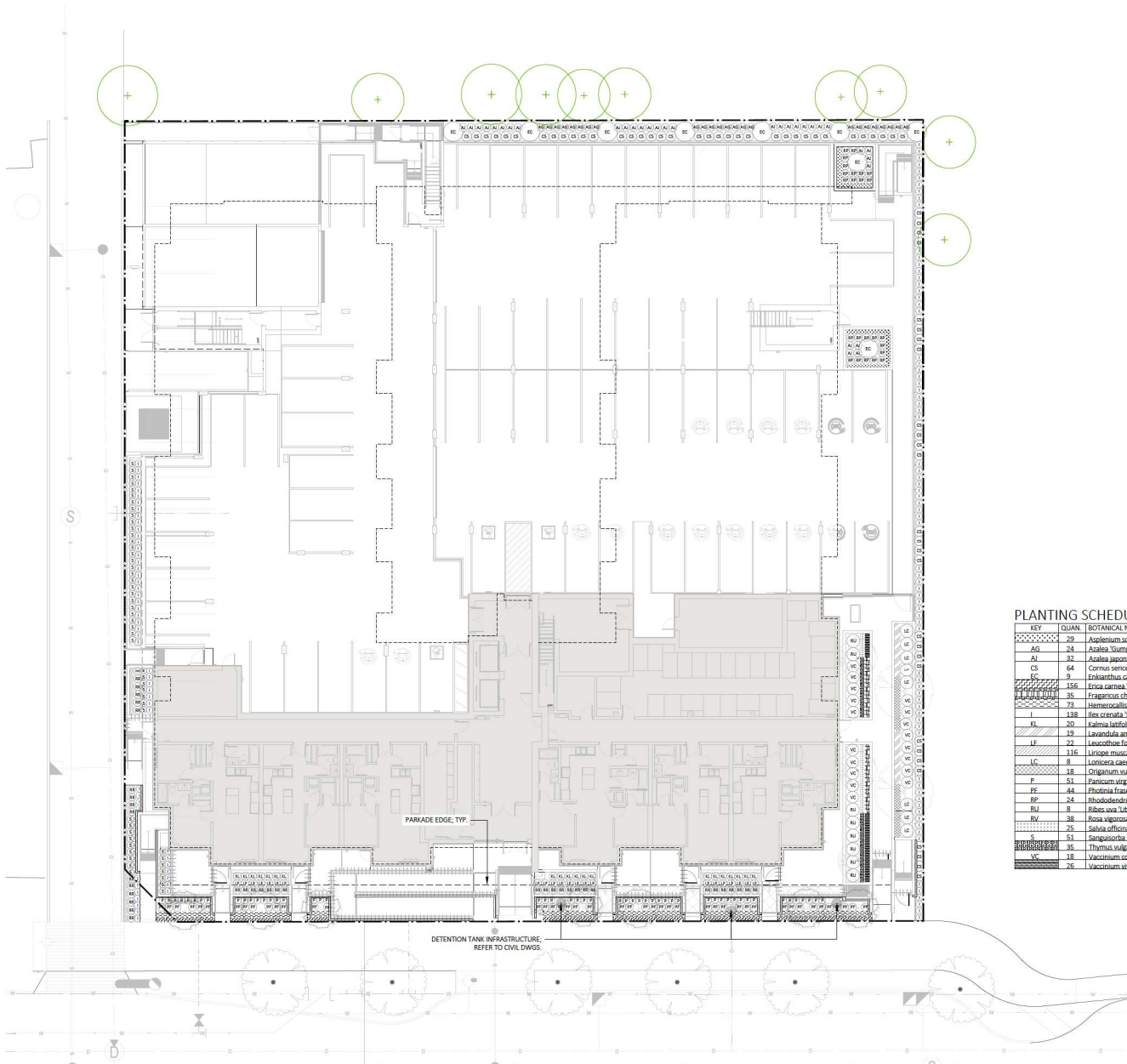


**SITE PLANTING
PLAN**

SCALE 1:150



L-2.01



PLANTING SCHEDULE

KEY	QUAN	BOTANICAL NAME	COMMON NAME	SIZE
AS	29	Asplenium scolopendrium	Hart's Tongue Fern	No. 1 Pot
AW	24	Azalea Sumpo White	Sumpo White Azalea	No. 3 Pot
AI	32	Azalea japonica 'Eridoline'	Fridoline Azalea	No. 3 Pot
CS	64	Cornus sericea 'Kelsvei'	Kelsvei Dwarf Dogwood	No. 3 Pot
EC	9	Ericaethus campanulatus	Redvein Ericaethus	No. 10 Pot
EC	156	Erica carnea 'Springwood White'	Springwood White Heather	No. 1 Pot
FR	35	Fragaria chiloensis	Beach Strawberry	No. 1 Pot
HE	73	Hemerocallis 'Moonlit Masquerade'	Moonlit Masquerade Daylily	No. 1 Pot
I	138	Ilex crenata 'Sky Pencil'	Sky Pencil Japanese Holly	No. 5 Pot
IL	20	Ilama latifolia 'Minuet'	Minuet Mountain Laurel	No. 3 Pot
LE	19	Levandula angustifolia 'Munstead'	Munstead English Lavender	No. 1 Pot
LF	22	Leucoboe fontaniana 'Rainbow Improved'	Rainbow Improved Leucothoe	No. 3 Pot
L	116	Liriope muscari 'Big Blue'	Big Blue Liriope	No. 1 Pot
LC	8	Lonicera saxatilis 'Tresberry Sugar Pie'	Japanese Hacklap	No. 3 Pot
O	18	Origanum vulgare	Greek Oregano	No. 1 Pot
P	51	Panicum virgatum 'Prairie Flame'	Prairie Flame Switch Grass	No. 1 Pot
PE	44	Rhodonia fraseri 'Fire Fantasy'	Fire Fantasy Rhodonia	No. 3 Pot
RP	24	Rhododendron 'Purple Gem'	Purple Gem Rhododendron	No. 3 Pot
RU	8	Ribes sora 'Little Ben'	Little Ben Gooseberry	No. 3 Pot
RV	38	Rosa vigorosa 'Red Ribbons'	Red Ribbons Rose	No. 2 Pot
S	75	Salvia officinalis 'Tropicana'	Tropicana Sage	No. 1 Pot
S	51	Sanguisorba officinalis 'Tanna'	Tanna Great Burnet	No. 1 Pot
TH	35	Thymus vulgaris	Garden Thyme	No. 1 Pot
VC	16	Vaccinium corymbosum 'North Country'	North Country Blueberry	No. 3 Pot
V	25	Viburnum minus ideala	Lipsberry	No. 1 Pot



LANDSCAPE ARCHITECTURE DIVISION

ISSUED FOR
DEVELOPMENT
PERMIT

NO.	ISSUE/REVISION	DATE
1	ISSUED FOR LP	07-28-23
2	RE-ISSUED FOR DP	09-26-23
3	RE-ISSUED FOR DP	10-05-23
4	RE-ISSUED FOR DP	11-06-23
5	RE-ISSUED FOR DP	28-01-30

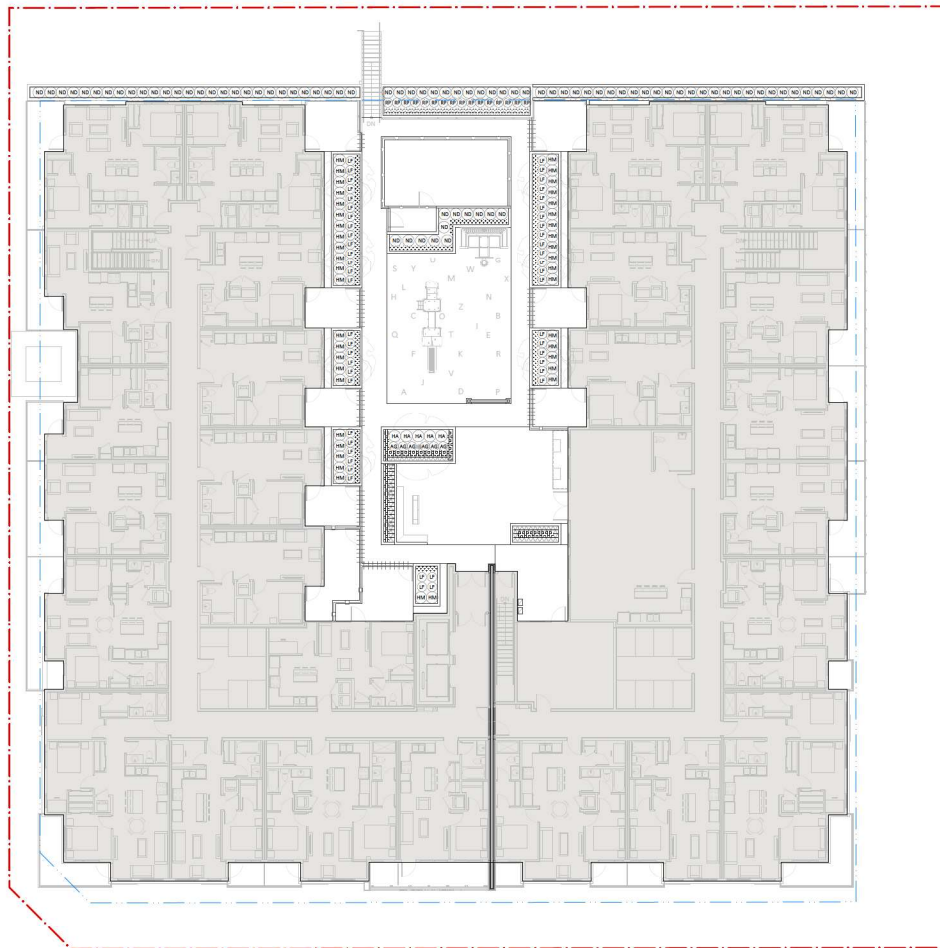
WESMONT
APARTMENTS
EASTLEIGH

20625 EASTLEIGH CRESCENT,
LANGLEY, BC

PROJECT # 23112
CITY FILE #

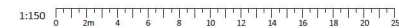


PODIUM PLANTING
PLAN



PLANTING SCHEDULE

KEY	QUAN.	BOTANICAL NAME	COMMON NAME	SIZE
-----	121	Asplenium scolopendrium	Hart's Tongue Fern	No. 1 Pot
▲	6	Azalea 'Gumpo White'	Gumpo White Azalea	No. 3 Pot
■	51	Carex oshimensis 'Everlime'	Everlime Japanese Sedge	No. 1 Pot
■	5	Hydrangea arborescens 'Innocence White'	Innocence White Hydrangea	No. 3 Pot
■	41	Hydrangea macrophylla 'Wee Bit Grumpy'	Wee Bit Grumpy Hydrangea	No. 3 Pot
■	50	Leucothoe fontanesiana 'Rainbow Improved'	Rainbow Improved Leucothoe	No. 3 Pot
■	80	Nandina domestica 'Fringepew'	Fringepew Heavenly Bamboo	No. 3 Pot
■	16	Rhododendron 'Purple Gem'	Purple Gem Rhododendron	No. 3 Pot
■	52	Tillima grandiflora	Fringecup	No. 1 Pot
■	20	Weigela florida 'Midnight Sun'	Midnight Sun Weigela	No. 2 Pot



SCALE 1:150



L-2.02