

N  
SCALE 1/8" = 1'-0"

**RPL**  
 ROYAL PACIFIC LANDING LTD.  
 太平洋皇家园林设计有限公司  
 www.royalpl.com  
 604-338-5035  
 lu@royalpl.com

- LEGEND:**
- SOIL LAWN
  - LAYERED PLANTING BED
  - UNIT PAVING
  - CONCRETE SLAB PAVERS
  - WOOD DECK
  - BENCH
  - 2 X 2 CONC. STEP STONE
  - CONIFEROUS HEDGE
  - EXIST TREE REMOVE
  - NEW TREE

REVISIONS

NO.	DESCRIPTION	DATE
1	ISSUED FOR REVISION	2018.09.20
2	ISSUED FOR REVISION	2018.09.07

PROJECT INFORMATION

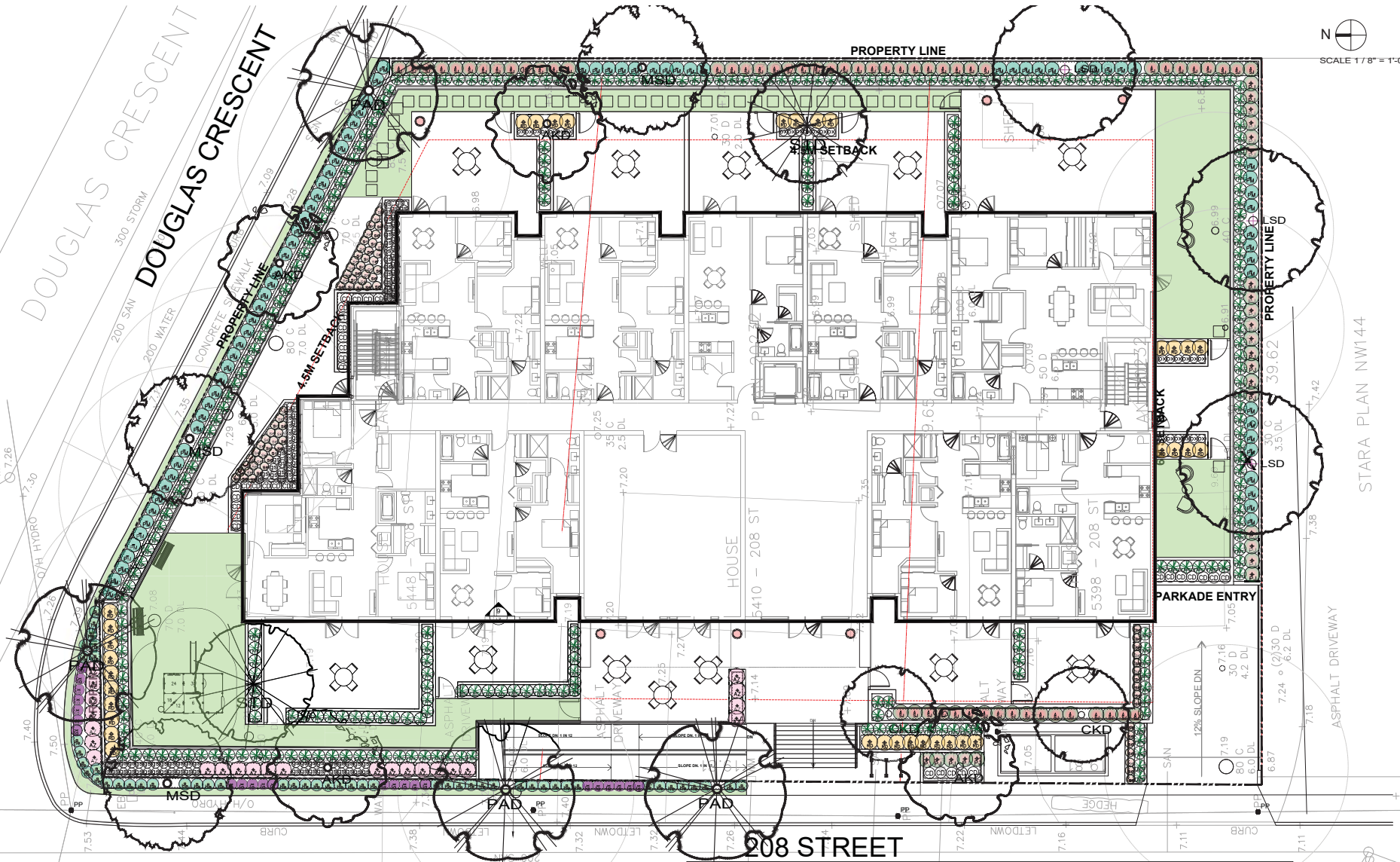
PROJECT NUMBER	L208
DRAWN BY	LX
CHECKED BY	LX
DATE CHECKED	
CONSULTANT	

**5398, 5410, 5448**  
 208 TH STREET  
 LANGLEY, BC

**LANDSCAPE SITE PLAN**

DRAWING NO. **L1**





REVISION	DATE
1	
2	2018.09.20
3	2018.09.07
4	
5	
6	
7	
8	

PROJECT  
**5398,5410,5448**  
 208 TH STREET  
 LANGLEY, BC

**LANDSCAPE PLANTING PLAN**

DRAWING NO. **L2**

KEY	QTY.	BOTANICAL NAME	COMMON NAME	SIZE & COND.
<b>TREES &amp; HEDGES</b>				
TMC	282	TAXUS MEDIA "HM EDDIE"	EDDIE YEW	4FT HT. 20" O.C. B&B
AKD	4	ACER PALMATUM "BLOODGOOD"	CORAL BARK JAPANESE MAPLE	2.5M HT. B & B
CKD	2	CORNUS KOUSA "SATOMI"	PINK DOGWOOD	6CM CAL. B & B
LSD	3	LIQUIDAMBAR STYRACIFLUA	AMERICAN SWEETGUM	3M HT. B & B
MSD	3	MAGNOLIA X. SOULANGIANA	SAUCER MAGNOLIA	6 CM CAL. B & B
PAD	4	PRUNUS SERRYLATA "KWANZAN"	DOUBLE FLOWER CHERRY	6 CM CAL. B & B
STD	2	STEWARTIA PSEUDOCAMELLIA	JAPANESE STEWARTIA	6CM CAL. B & B

KEY	QTY.	BOTANICAL NAME	COMMON NAME	SIZE & COND.
<b>SHRUBS &amp; GROUNDCOVERS</b>				
AZ	24	AZALEA BLOOM-A-THON PINK DOUBLE	REBLOOMING AZALEA (PINK)	#2 @ 3' O.C.
CD	34	COTONEASTER DAMMERI	LITTLE-LEAF COTONEASTER	#2
PJ	24	PIERIS JAPONICA FOREST FLAME	JAPANESE PIERIS	#2
PM	79	POLYSTICHUM MUNITEM	WESTERN SWORD FERN	#2 POT @ 2' O.C.
RD	35	RHODODENDRON NACY EVANS	NACY EVANS RHODO.(CREAM YELLOW)	@3 @ 3'-6" O.C.
SJ	58	SKIMMIA JAPONICA RUBELLA	JAPANESE SKIMMIA	#3
gs	97	GAULTHERIA SHALLON	SALAL	#1 30CM O.C.
he	51	HELICTRICHON SEMPERVIVENS	BLUE OAT GRASS	#2 30CM O.C.
la	23	LAVANDULA ANGUSTIFOLIA	ENGLISH LAVENDER	#2 POT @ 18" O.C.
ox	26	OXALIS OREGANA	REDWOOD SPURGE	#1 30CM O.C.
se	96	SEDUM AUTUMN JOY/ FIRE	STONECROP	#2 POT @ 18" O.C.



